



Santa Cruz VOTER

LEAGUE OF WOMEN VOTERS®
OF SANTA CRUZ COUNTY

December 2015

Volume 50, Number 4

In this Issue

<i>Climate Change in California</i>	-----1
<i>President's Message</i>	-----2
<i>Membership Report</i>	-----2
<i>Voter Service Report</i>	-----2
<i>Elections Up Close</i>	-----3
<i>Hoping for a CURE</i>	-----5
<i>Bay Area League Day</i>	-----6
<i>News from LWVC</i>	-----6
<i>Santa Cruz Coordinator Needed</i>	-----6
<i>RSVP for February Luncheon</i>	-----6
<i>Reservation form for Luncheon</i>	-----7

Calendar

Sunday, January 10, 2016

2-3 p.m.

Our Changing Climate & the California Coast
Co-Sponsored and hosted by the
Seymour Marine Discovery Center
La Feliz Room; 100 Shaffer Road
Santa Cruz 95060

Tuesday, January 12, 2016

10 a.m.-noon

LWVSCC Board Meeting
Santa Cruz County Bank
720 Front Street, Santa Cruz 95060

Sunday, February 21, 2016

11:30 a.m.-2 p.m.

LWVSCC Anniversary Luncheon
Guest Speaker: Assembly Member Mark Stone
Seacliff Inn Banquet Room,
7500 Old Dominion Court, Aptos, CA 95003
Cost \$30 per person.
Please RSVP using the [reservation form](#) on
page 7 by Saturday, February 6, 2016:

Local Program Planning

Details to be announced

Affordable Housing Program

Details to be announced

Tuesday, April 12, 2016

10 a.m.-noon

LWVSCC Board Meeting
Santa Cruz County Bank
720 Front Street, Santa Cruz 95060

Tuesday, April 12, 2016

6:30-8 p.m.

Celebrating Lilly Ledbetter
Peace United Church
900 High St, Santa Cruz, CA 95060
Details to be announced.

*The League of Women Voters of Santa Cruz County
And the Seymour Marine Discovery Center Present*

Our Changing Climate and the California Coast



Gary Griggs, Ph.D.
UCSC



Michael Orbach, Ph.D.
Duke University

**Sunday
January 10
2 to 3 p.m.
Featuring**

Seymour Marine Discovery Center • La Feliz Room
100 Shaffer Road, Santa Cruz 95060

*Entrance to the lecture is free, but those who wish to also tour the Seymour
Center must pay for entrance to the museum.*

While some dispute the causes, global climate change is happening. Projections suggest sea levels will rise worldwide between one and two meters by the end of this century. By that time, over half of the world's population will live within 100 miles of an ocean coast. Already, twenty of the world's thirty largest cities are located in vulnerable coastal areas. The effects of sea level rise are already being felt in many locations around the world, including California. Since the beginning of significant built infrastructure 6-8,000 years ago, human civilization has never experienced this situation of rising sea levels.

How will this change affect California's coastline? What effects will it have on our infrastructure, economy, and society? Dr. Gary Griggs, a coastal geologist, and Dr. Michael Orbach, a cultural anthropologist, will discuss the implications of these trends with a focus on Central California.

Gary B. Griggs, Ph.D., director of the Institute of Marine Sciences at the University of California, Santa Cruz, has focused his research on coastal evolution and development, long-term coastal and shoreline change, coastal hazards and coastal engineering, and impacts and responses to sea-level rise along the Pacific Coast.

Michael K. Orbach, Ph.D., Professor Emeritus of Marine Affairs and Policy at Duke University, has been involved in coastal and marine policy on the coasts of North and Central America, Europe, and the Pacific. He has published widely on social science and policy in coastal and marine environments.

Co-sponsored by the [Seymour Marine Discovery Center](#) and the [League of Women Voters of Santa Cruz County](#), this free public lecture will be held on Sunday, January 10, 2016 from 2 to 3 p.m. in the La Feliz Room at Seymour Marine Discovery Center, 100 Shaffer Road, Santa Cruz.

To help spread the word about this event, a [flyer](#) to share with friends or post can be downloaded and printed at lwvsc.org/calendar

Membership Report

As your new Membership Chair, I am happy to announce that we have 85 members on our October roster, almost all of you renewing your membership. I would like to welcome our two new members, Coleen Garde and Dennis McDowell (look for a profile in the February 2016 VOTER).

I have sent rosters via U.S. mail to seven households that do not have email addresses on our roster, and the rest of you should have received your copy of the roster by email. Please let me know if there are any changes to be made in the information you have provided for our membership roster.

As a retired elementary school teacher, I wanted to relate an interesting connection I have with one of this year's new League members, author Paul Fleischman. His book, *Joyful Noise: Poems for Two Voices*, is a unique collection of poetry from the perspective of insects, and I often used it in my classroom. This book was awarded the 1989 Newbery Medal. To this day, Paul and his late father Sid Fleischman are the only father and son authors to both win the John Newbery Medal for children's books. Sid Fleischman won the 1987 Newbery award for *The Whipping Boy*. We congratulate Paul for receiving the 2015 Green Earth Book Award for Best Young Adult Nonfiction for his book *Eyes Wide Open: Going Behind the Environmental Headlines*. Learn more about Paul Fleischman at www.paulfleischman.net/

Ending with a quote by the character Elva from Paul Fleischman's book *Mind's Eye*: "When we have no families, we must find support elsewhere. Sometimes in strangers. We're all alone on the earth. We must take any hand that's offered us. I offer you mine...I'll be your friend, if you wish. The faithful kind."

—Peggy Marketello, Membership Chair

President's Message



Dear Members:

Thank you to Paula Lee for the fascinating talk at our November 4 lunch program at the Scotts Valley Library. Our appreciation goes to Pam Newbury and Judi Orbach for helping with the arrangements. The talk on proportional representation and ranking as alternative voting systems drew very positive comments and made us think about a subject most of us had little understanding of before coming to this program. If you missed this program, be sure to read the article about it in this issue so you can also consider this topic.

I look forward to the upcoming programs in 2016 and learning more as a participant in our Santa Cruz County League of Women Voters. Don't miss January's talk on climate change, an important subject for those of us living so close to the ocean. It's not too early to send in your RSVP for February's anniversary luncheon with Assembly Member Mark Stone (details on both events on the calendar, and a [reservation form](#) to mail in is on page 7). I encourage you to come to our programs and take advantage of your membership in the League.

—Barbara Lewis, President LWVSCC

Voter Service Report

On November 8 our League participated in a successful voter outreach effort in conjunction with Helen Ruiz-Thomas of the Santa Cruz County Elections Department. The Immigration Action Group sponsored a forum that focused on immigration policies and citizenship. This local group is part of a statewide coalition of immigrant activist groups. They provide support and information for immigrants on current immigration policies, legal aid, and pathways to citizenship. At the forum, two people were re-registered as voters and others were given information on voting requirements. The Voter Service Team will continue to build a liaison with the County Elections Department to provide voters with important registration and election information.

Watch this brief slide show at participate.lwv.org to find out how Leagues across the nation have been serving voters in 2015!

—Dottie Fry, Voter Service Co-Chair

Elections Up Close: Towards a More Reflective Democracy

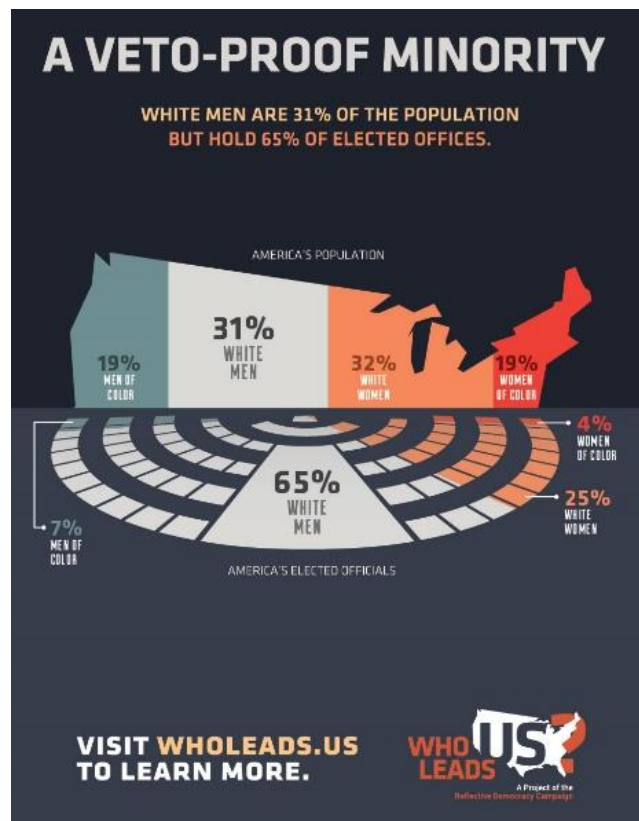
For League member Paula Lee, living in very conservative El Dorado county in the 1990s meant her views were not reflected by any of her elected representatives. Speaking at the November 4 LWVSCC meeting at the Scotts Valley Branch Library, Lee reflected on the moment many years ago when the light bulb went on in her head and she began to understand the reasons behind her lack of representation. When Patricia Malberg, a popular moderate Democrat running for the House, lost to Republican John Dooittle by just 3 percentage points, Lee was stunned to find out that Malberg had received no money at all from the Democratic National Committee because the district was drawn to be “red”, a Republican seat.

While districts are somewhat more fairly drawn today, due to California’s non-partisan redistricting commission, because of our winner-take-all election system, even in a balanced district, the voters who supported the losing candidate will not have their views represented. In districts that lean heavily red or blue, many voters have no representation at any level, from the board of supervisors to the US legislature. This leads many to conclude that their vote does not count.

This problem was writ large in 2014 when there was a big turnover in Congress. In November 2014, Democrats received 1.4 million more votes than Republicans, but because many districts throughout the U.S. were drawn to elect Republicans, they won the majority of seats in the House.

To help us understand the effects of the current electoral system, Lee showed a short video (view it online at WhoLeads.US/candidates) analyzing why representation in the U.S. is not reflective of the population. They point out that congress has more millionaires than women. Roadblocks to electing more women politicians are lack of access to political relationships and donors, recruitment practices that focus on established

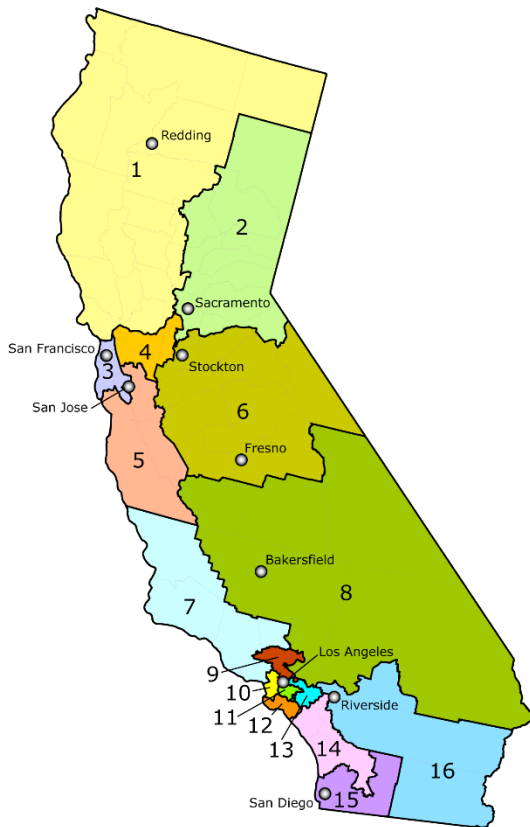
candidates, and costs of campaigning. Other reasons why women do not get involved in politics are family commitments and lack of civility in politics.



Congress has more millionaires than women.

Lee, now a Sacramento resident and co-president of the Sacramento LWV, proposes to improve representation by solving the structural problem of how districts are formed. Using California as an example, instead of dividing the state into eighty single-member districts, she would divide it into sixteen districts that would each elect five members. Voters would rank their candidate choices in order of preference, and the top five vote-getters would be elected (more on ranked choice voting below). This would ensure that most districts would elect a mix of Republican and Democratic candidates, with some districts possibly electing third parties. Thus, almost all voters would be represented by a member of their own party. (A detailed explanation of this system can be seen at the Californians for Electoral Reform website) Another benefit of multi-member districts is that they would enable communities whose minority populations are

geographically separated to elect minority representatives.

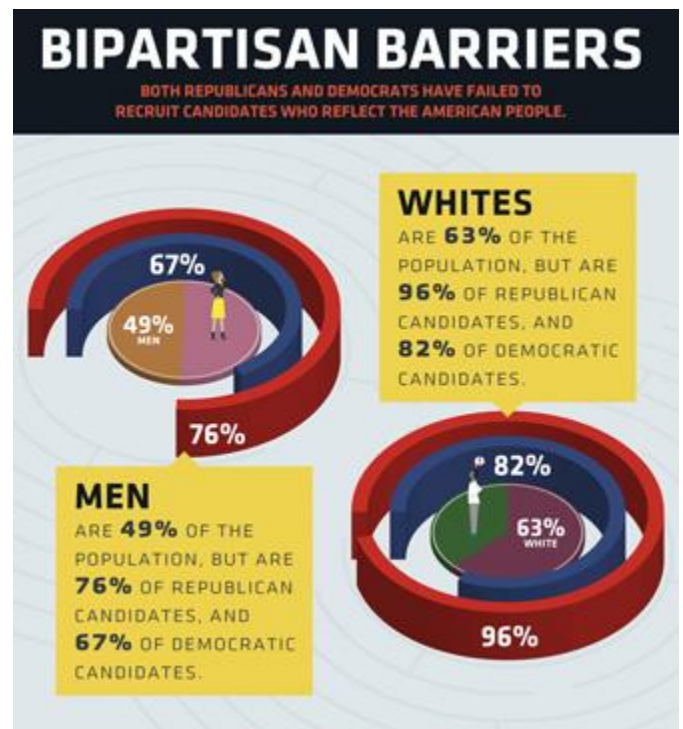


California Assembly: 16 five-member districts

According to Lee, multi-member districts on their own would not create a more reflective representation, but combined with ranked choice voting (RCV), also known as instant runoff voting, multi-member districts would ensure a fairer representation. With RCV, voters rank their choices numerically in order of preference. When votes are counted, the candidate with the fewest votes is eliminated, and the votes from those who ranked that candidate first pass to that voter's second-choice candidate. The process of elimination continues until one candidate has a majority of the votes. (For a good explanation of RCV, see www.fairvote.org/reforms or view their [video](#)). RCV allows voters to select their top-choice candidate without worrying about vote splitting between similar candidates or taking away votes from their second-choice candidate that would allow an opponent to win. The other major point in favor of electoral reform is that if people felt their votes counted and that

they would be able to elect a candidate that would represent their views, more voters would show up at the polls.

Lee admitted that multi-member districts and RCV will be “an incredibly tough sell.” Currently, U.S. law requires states to elect congress members in single-member districts. In California, alternative voting systems can be used by those cities that have adopted a charter; other counties and municipalities are subject to state law, and could not do so unless state law changes. Making the change to voting equipment that can handle RCV will be expensive, creating another barrier.



Multi-member districts would help elect candidates that represent minority views.

Lee pointed out that the League's founder, Carrie Catt, supported proportional representation all her life. Catt knew that without it, women would never take their place in American politics. With the U.S. ranked number 72 among countries in the number of women elected to offices (below Saudi Arabia), it is clear that if we don't look closely at our election systems to see where changes are needed, politics in the U.S. will continue to be a “good old boys” club that does not reflect the majority of our population.

—Pam Newbury, VOTER Editor

Hoping for a CURE:

Breaking the Addiction Cycle

Last May the LWVSCC sponsored an educational forum about substance use disorders (SUD). Attorney Ashley Wheelock, a League member, moderated a panel that included Rod Libbey and Jessica Stone of Janus; Vanessa de la Cruz, M.D., and Bill Manov, Ph.D. of the county health services department; and County Sheriff James Hart. This is the fourth of a series of articles reporting on what the panelists discussed.

Wheelock related a question from the audience about prescription painkiller use among local teens. Stone mentioned that Janus provides overdose prevention kits (free for those who can't afford them), and that they are important to have on hand for anyone who has a family member on painkillers, whether they are being misused or used as prescribed.

De la Cruz framed this as a national problem, emphasizing the need to educate medical providers about prescribing opiates, how to get people off opiates, and how to refer them to treatment. She also noted that providers need to educate their patients about the risks of addiction when they prescribe these medications.

Manov mentioned three campaigns the health department has to address prescription drug abuse. One is a lock-it-up education program directed to parents. Another is prescription drug take-backs to properly dispose of unneeded medications. (To find locations to drop off medications, go to sharpmedsolutions.org)

The statewide CURES program (Controlled Substance Utilization Review and Evaluation System) allows a physician or pharmacist to sign on to a state website before writing or filling a prescription for an opiate to see who else has written prescriptions to the patient. Currently the participation in CURES is low, but they are working to encourage more participation. Reducing availability of opiates will help reduce abuse.

De la Cruz mentioned technical problems with the database that have discouraged doctors from using it, even though most doctors support it, and that the database project is underfunded. [Editor's update: as of November 2015, the implementation date for requiring mandatory use of the database was pushed back to July 2016.]

Hart emphasized the key role played by prescription opiates in the development of addiction problems, stating that many young heroin users report beginning opiate use by stealing a relative's prescription, then switching to heroin when the pills ran out. Hart encouraged use of the take-back programs and kiosks where people can drop off their unused pills. (sharpmedsolutions.org). It's important not to flush medications down the toilet, as that leads to contamination of drinking water.

Wheelock segued the conversation to the topic of Santa Cruz as a "heroin port." Hart responded that Watsonville has been designated as a "high intensity drug trafficking area," a Federal designation that provides funding to address the problem. In the last two weeks, Hart continued, their anti-crime drug and gang teams had seized over six pounds of heroin. He describes heroin as easily accessible, very prevalent, and very cheap, about three grams for \$100, putting it right up there with methamphetamine as one of the more abused hard drugs in the county.

With that, Wheelock turned to current research on treatments for alcoholism. Stone stated that the newest treatment is Vivitrol, a monthly shot that helps reduce the impacts of use for opiates and alcohol. Stone explained, "The idea is, since somebody doesn't feel the effect, they don't want to use opiates."

"It prevents the need for it," continued de la Cruz. Vivitrol, an injectable form of oral Naltrexone, is very expensive and hard to get for those on MediCal compared to the oral version. She also mentioned Acamprosate and Antabuse (Disulfiram). There are also anticonvulsant medications that can treat seizures during detox. She also expressed concern that some physicians don't feel comfortable prescribing these medications, and that is something the county needs to work on. She concluded by expressing the need for more research on people who are stimulant addicts to increase the options for interventions.

This ends part four of our report on last May's forum. Previous installments can be viewed in our August, September, and October newsletters (which can be viewed online at lwvsc.org/voter) Look for continuing installments in future issues of the VOTER. You can also view the [entire video of the forum](#) on by clicking on the link at lwvsc.org/calendar.

—Pam Newbury, VOTER Editor

Membership in the League of Women Voters is open to men and women of voting age who are U.S. citizens. Others are welcome to join the League as associate members.

Send your check payable to League of Women Voters of Santa Cruz County or LWVSCC with this form to LWVSCC, Box 1745, Capitola, CA 95010-1745.

___ \$65 Individual annual membership
___ \$100.00 Two members in a household
___ \$30.00 Student membership
___ Contribution \$ _____

Checks made out to LWVSCC are not tax deductible.

To make a tax-deductible donation, write a separate check to LWV Education Fund.
Name _____

Address _____

City _____ State _____ ZIP _____

Telephone: _____

Email _____

*League of Women Voters
of Santa Cruz County
PO Box 1745, Capitola, CA 95010
(831)426-VOTE(8683)
Editor: Pam Newbury
President: Barbara Lewis
Membership: Peggy Marketello
league@lwvsc.org | <http://lwvsc.org>*

The League of Women Voters, a nonpartisan political organization, encourages informed and active participation in government, works to increase understanding of major public policy issues, and influences public policy through education and advocacy.

LWV Anniversary Luncheon

The League of Women Voters of Santa Cruz County invites the public to celebrate the 96th anniversary of the LWV at its annual luncheon. on Sunday, February 21 at the Seacliff Inn in Aptos. Keynote speaker, Assembly Member Mark Stone, will speak about how recent legislative reforms in Sacramento have shifted conventional political wisdom and power bases in dramatic and unpredictable ways. **[Mail in the reservation form on page 7 today to reserve your place.](#)**

Bay Area League Day 2016: Reinventing Bay Area Transportation for the 21st Century

On Saturday, February 6, the [League of Women Voters of the Bay Area](#) will host its annual Bay Area League Day. Focusing on transportation funding, innovation, and policy, the forum will feature a keynote by Jim Beall, chair of the California State Senate's Committee on Transportation and Housing. Registration begins at 9:00 a.m. with the program to follow from 9:30 a.m. to 2:30 p.m. in Maple Hall Community Center at 13831 San Pablo Avenue in the City of San Pablo. Visit <http://www.lwvbayarea.org> for more information.

Check out the Bay Area Monitor (at bayareamonitor.org), newsletter for the [LWV of the Bay Area](#), an inter-league organization, for articles on traffic, pollution from refineries, using grazing for land management, and micro plastic in the San Francisco Bay.

News from our State League

Keep abreast of what our California League is up to at lwvc.org. Find out why the state League does not support the [Bay Delta Conservation Plan/California WaterFix](#), the Administration's plan to build twin tunnels under the Sacramento-San Joaquin Delta. Get an [update on California water legislation](#) of interest to the LWVC. Learn about efforts to [Make It Fair](#): LWVC has joined a [coalition working to reform Proposition 13](#) by changing the unfair way in which commercial property is taxed in California. While they have decided not to put a proposition on the November 2016 ballot, efforts to garner support will continue. While our local League will not be participating in the update of the national League's [Money in Politics](#) position and California League's [Higher Education Study](#), members are encouraged to learn about the issues involved by reading the study materials.

Voter's Edge Coordinator needed in Santa Cruz

Voter's Edge California (VEC), the next generation of the League's Smart Voter, marries the League's powerful coverage of election contests, candidates, and ballot measures with MapLight's deep expertise in campaign finance, public data, and technology. VEC needs a coordinator for Santa Cruz County. If you are interested in an exciting opportunity to get involved in voter services and be in touch with local politics, learn more at cavotes.org/about/jobs.

THE LEAGUE OF WOMEN VOTERS OF SANTA CRUZ COUNTY

*Invites the public to attend our annual luncheon
celebrating the 96th anniversary of the LWV*

Keynote Speaker:
Assembly Member Mark Stone
*Topic: Legislative Reforms and Political
Power Shifts in Sacramento*

Sunday

February 21, 2016

11:30 a.m. to 2 p.m.

Luncheon served at noon.

Seacliff Inn Banquet Room

7500 Old Dominion Court, Aptos, CA 95003



*Find out how recent legislative reforms in
Sacramento have shifted conventional political
wisdom and power bases in dramatic and unpredictable ways.*

To reserve your place, please complete and mail the form below by Saturday, February 6, 2016.

LWV Anniversary Luncheon Sunday, February 21, 2016 11:30 a.m.

I wish to reserve _____ places at \$30 per person for a total of \$_____

Make checks payable to LWVSCC.

Menu choices: Celestine Salmon, Roast Pork Loin, or Cheese Tortellini. Vegan meals available by request.
Please indicate the name and menu choice of each attendee (add more on back if needed):

Name	Menu choice (circle one)			
_____	Salmon	Pork	Tortellini	Vegan
_____	Salmon	Pork	Tortellini	Vegan
_____	Salmon	Pork	Tortellini	Vegan

Your contact information: Name _____ Email _____ Phone _____



Please mail form and check (payable to LWVSCC) by Saturday, February 6, 2016 to:
LWVSCC P.O. Box 1745, Capitola, CA 95010
More information: lwwsc.org/calendar | league@lwwsc.org | (831)426-8683