



THE CAPE COD VOTER

VOLUME 58 ISSUE 3

NOVEMBER 2018

CALENDAR

Friday November 2

Last day of early voting

Tuesday November 6
9:30am

Board Meeting
Cape Cod Five, Dennis

TUESDAY NOVEMBER 6

ELECTION DAY

Monday November 12

Veterans Day Holiday

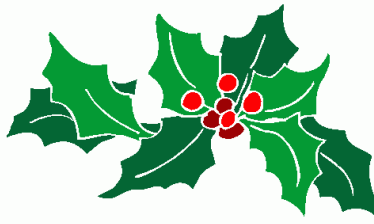


Thursday November 22 Thanksgiving Day

COMING UP

Saturday December 1
Hours 9:30 - 11:30

LWVCCA Holiday Brunch
Riverway Lobster House, S. Yarmouth



Tuesday, December 4
9:30am

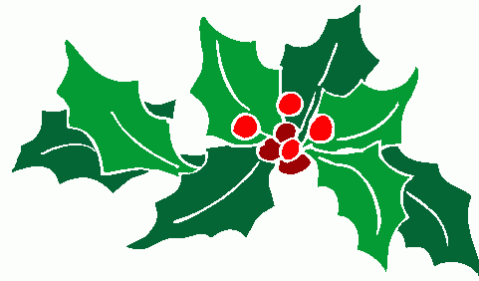
Board Meeting
Cape Cod Five, Dennis

www.lwvcapecod.org

www.members.lwvcapecod.org

www.facebook.com/LWV

Coming Saturday, December 1st --
LWVCCA Annual Holiday Brunch
Riverway Lobster House, Route 28 & West Main Street
South Yarmouth
\$16 per person ~ bring a friend!



Guest Speakers:
Kate Boland -- Membership Chair LWVMA
Marie Gauthier -- Founder-President, LWV Franklin
County
(She saw a need and she made it happen!)

Please help by reserving early (prior to Thanksgiving would be helpful)
Ann Ryan, (310) 924-1650 ryan.annp@gmail.com

**Mail this form with your check for \$16 per person, made out to LWVCCA,
to Amy Harris, Treasurer, at 4 Chapel Hill Lane, Harwich 02645**

Name _____ (Phone) _____

Guest(s) _____

Election Season is LWV's busiest

LWVCCA leads two major debates on candidates for Congress and State Senate and on Ballot Question 1 re mandated patients-to-nurse ratios.

Saturday, October 13 -- The large theater at Cape Cinema, with its dramatic Rockwell Kent mural overhead, was packed on the morning of October 13 as The Cape Cod Times sponsored two major debates, moderated by the League of Women Voters. In the first, incumbent State Senator **Julian Cyr**, of Truro vied with challenger **John Flores** of Sandwich, an educator.

In the second debate, incumbent Congressman **William Keating** faced off against political newcomer **Peter Tedeschi**, retired president of his family's chain of convenience stores.

Members of the League of Women Voters of the Cape Cod Area were out in force to assure a well-run program. As the audience arrived, League members handed out cards for audience questions, later moving about the audience to collect questions for the moderator.

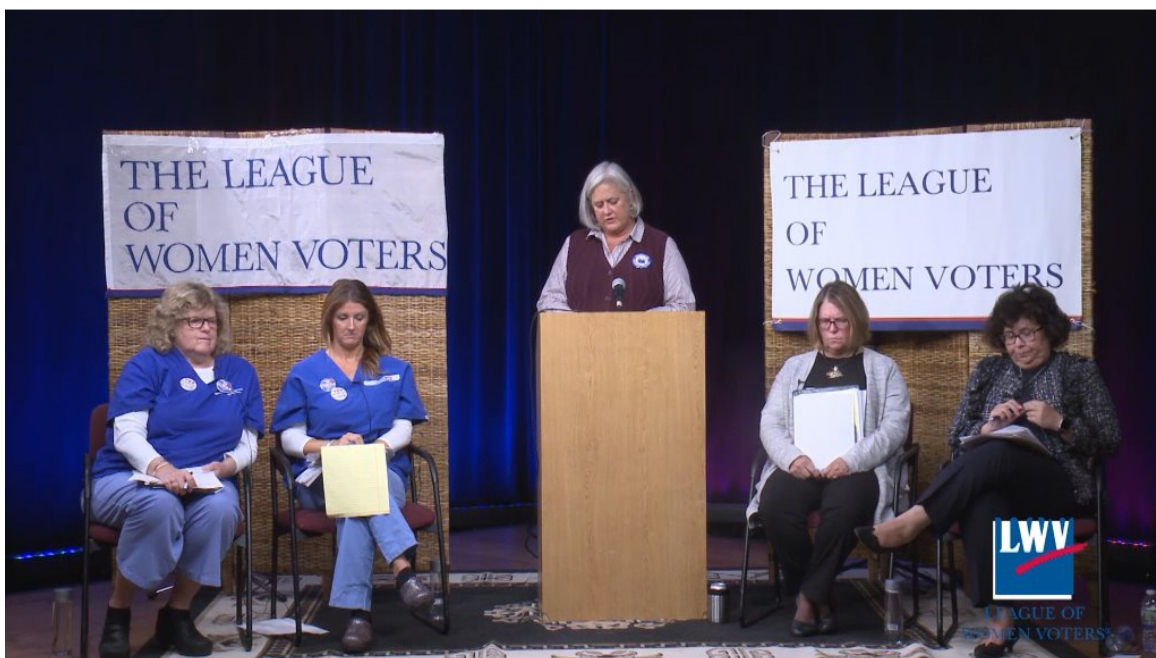
Jo Ann Berry, an experienced moderator and a member of the Acton LWV, was moderator. Handling the difficult job of card sorting was **Judy Thomas**, card collectors were **Rosemary Shields**, **Elaine Bono** and **Marcia Otto**. **Anita Rogers** and **Nancy Erskine** were timers.

Senator Cyr and John Flores crossed swords over Cyr's voting "yes" for a raise for all legislators--including himself. Cyr, whose career has been spent largely in public service, felt the salary increase would encourage more people from all walks of life to run for office. Cyr attacked Flores for his support of allowing guns for certain employees in schools, including teachers.

In their debate, Rep. Keating and Mr. Tedeschi agreed that bipartisanship in Congress was key. But then Flores accused Keating of being a "career politician" and called for term limits. Keating attacked the Republicans and Trump administration on their immigration policy which, while separating families at the border, also sharply reduced visa possibilities for vital foreign workers on Cape Cod.

(Ed. Note -- Subsequently, the Cape Cod Times endorsed Congressman Keating and Senator Cyr, while acknowledging both Flores and Tedeschi for their dedication in running for office. *Late news: Both Keating and Cyr won on Election Day.*)

FORUM ON BALLOT QUESTION 1 -- PATIENT-TO-NURSE RATIOS



*L to r: Beth Picknik, Shannon Sherman, Moderator Amy Harris, Judy Quinn, Terri Ahern
Photo kindness Cape Cod Community Media Center*

LWVCCA's Healthcare Committee presented an excellent forum on the question of staffing ratios in Massachusetts hospitals ~ i.e. how many patients could be assigned to a single nurse, depending on the department of a hospital (e.g. ICU, Maternity, Emergency). The ballot question was sponsored by the Massachusetts Nurses Association, but was opposed by the American Nurses Association and others including all Massachusetts hospitals. (Note: the LWV has taken no official position of this question.)

Moderated by LWVCCA's **Amy Harris**, the panel featured 4 nurses, two in favor and two against. Speaking in favor were **Beth Picknik RN** (retired) and **Shannon Sherman, RN**, now in her 40th year at Cape Cod Hospital. Opposing the question were **Judy Quinn** and **Theresa Ahern, both RNs** now serving in administrative positions at Cape Cod Healthcare.

While agreeing that patient care was paramount, the nurses' differed on the question of the availability of enough nurses to meet the required ratios (and doing so by the set deadline of January 1st) and of the cost to the hospitals and the entire healthcare system. The audience of about fifty people submitted excellent questions and certainly went home better informed on the issue.

(Ed. Note: Ultimately, Ballot Question One went down to defeat on election day -- by approximately 70% to 30% both on Cape Cod and across Massachusetts.)

LWVCCA Board Meeting October 2 2018
S U M M A R Y

Our October 2nd meeting was Scotti Finnegan's last as President. She will remain active as the LWVMA Regional Field Service Representative and a member of the LWVMA Membership Committee. As a result, the Board decided that a steering committee will share LWVCCA management responsibilities on a rotating basis. If you think you may be interested in joining the steering committee, contact Richard Utt (rutt45@gmail.com).

Membership, with the addition of two new members in September, stands at 95.

Renate Sands, Chair of the Legislative Committee, requested the Board to approve a letter to Representative Sarah Peake asking why bills pertaining to the Pilgrim Nuclear Power Plant in the last session have not passed and how the committee might more effectively advocate on this issue. The Board voted unanimously to approve the letter.

Renate is following the Act to Establish Early Retirement for Barnstable County (H.4196) which, if not passed, will result in layoffs of County employees. She will attend the LWVMA Legislative Envoy Program Regional Meeting on October 27.

The Forum on Ballot Question 1 (the proposed law limiting how many patients can be assigned to each registered nurse) will be held October 20, 10:00 AM - Noon, at the Cape Media Center in Dennis Port. There will be 4 speakers: 2 yes, 2 no. The Board stressed that the League has no position on Ballot Question 1.

Program Chair Ann Ryan outlined upcoming events: in February, an event will be held on work visas on Cape Cod; the Holiday Brunch will be December 1 at the Riverway Lobster House in South Yarmouth; Renate is again in charge of the Legislative Brunch in the spring.

The LWVCCA 60th Anniversary committee is seeking members to help plan the event. An early member of LWVCCA, Juliet Bernstein, is still alive (at 105) and will be invited to the 60th anniversary events.

The State Ballot Initiative Process study committee has 4 members: Lisa Draper, Scotti Finnegan, Peggy Rose, and Florence Seldin. They will meet the week of October 8 to divide up the work. In January, they will hold a consensus meeting for the membership. It will probably occur after Martin Luther King day, on a Tuesday, from 9:30-1:00. Members should bring lunch. More information will be in the *Voter*.

Debbie Aikman's grandson, Sawyer, who was seriously burned is now at home and on the mend. An event was held to explain to the community what happened, with participants from local fire departments and Shriners Hospital in Boston.

MEMBERSHIP COMMITTEE

From Phyllis Walsh & Matti Ligon

Please welcome our newest members

Margaret A. (Peggy) Bent
P102 Shellback Way, Mashpee 02649
Mabent0506@gmail.com

Deanna and Richard Cryan
23 Kalmia Way, Centerville 02632
617-538-1574 deannacryan@yahoo.com, cryanrm@yahoo.com

Marianne McCaffery
P.O.Box 1622, Wellfleet 02667
508-517-4103 m.mccaff.222@gmail.com

And meet Lisa Draper

Lisa Draper was invited to join our league by her cousin, Ann Ryan, our Program Vice President. She is now an active member of the MA Ballot Question Study Committee and is also interested in joining the Healthcare Committee.

Lisa moved to the Cape two years ago, and knows the area well, having spent summers with her grandparents in Chatham while growing up during her first ten years in Switzerland and Montreal. Her family then moved to Acton and Carlisle, where she attended Lawrence Academy.

Her love of horses led her to a program in equine studies at Centenary College in New Jersey, then on to Ledston, England, as a student in the British Horse Society Instructor's Program. In order to earn money to buy a horse for the Olympics, she enrolled in Johnson & Wales Culinary Arts program. Although she didn't buy that horse, she did apply her new skills as a chef in restaurants in Boston and Chatham.

She lived in New Hampshire for 25 years where she was the head chef at the Monadnock Inn. During that time she married, bought a home and adopted a son.

Please welcome Lisa as our newest member. Her contact information is:

20 Hammond Hill Rd.
Chatham, MA
907-201-1399
Mozartid28@gmail.com

THE LATEST FROM PILGRIM

From Elaine Dickinson

On October 5th-- the Plymouth reactor experienced a SCRAM (emergency shutdown) due to new equipment problems...the latest of 61 offline days this year. The cause was the closing of a valve which regulates the flow of water and thus a drop in the water level (cooling) inside the reactor. Problems with this valve have occurred twice before this year but also go back as far as 2016. The operation of Pilgrim remains in the "multiple/repetitive degraded cornerstone" category, the lowest assessment by the Nuclear Regulatory Commission. Pilgrim remains the worst reactor in the country, but is still one step from a federally-mandated shutdown. So it will continue to run until June of next year.

On October 27th--The Nuclear Decommissioning Citizens Advisory Panel announced that nuclear waste presently being stored only 200 feet from the shore of Cape Cod Bay will be moved to the site's upper parking lot --500 feet farther from the shoreline and 75 feet above mean sea level (currently 25 feet)--once the reactor shuts down permanently next June. Welcome news for Pilgrim-watchers--as far as it went. But Diane Turco, president of Cape Downwinders, wrote that more than better elevation is needed. "Casks should be placed in berms or a reinforced building with real time radiation/heat monitors, inside a security-tight, isolated area," she said.

On November 1st--Senator Warren expresses her concerns about Pilgrim's safety, citing the many shutdowns that have occurred just in the present year. "It is clear," she wrote, "that Entergy's modifications have not gone far enough to maintain safe operations"...adding that the plant is also listed as the worst performed (sic) of the nation's 98 reactors.

On November 2nd--Pilgrim powered down again.

BARNSTABLE COUNTY MATTERS

Cape Cod Commission Regional Transportation Plan Update. The Regional Transportation Plan is one of four regional planning documents prepared and administered by and through the Cape Cod transportation funding. Right now, members of the Commission's transportation staff are assembling data in support of the update, as well as reviewing progress on goals established within the current plan. The 2020 Regional Transportation Plan is expected to be released in the spring of 2019 for public comment. Stakeholder input is critical in the development of this document.

To learn more, <https://reporter.capecodcommission.org/regional-transportation-plan>

Party affiliations. There are 173,494 registered voters in Barnstable County. The great majority of those are Unenrolled (102,769 or 59.23%); Democrats are 43,284 or 24.95% and Republicans are 25,431 or 14.66% (Continued...)

County Elections -- Election to the Board of County Commissioners is on a Cape-wide basis and also by political affiliation. The two contestants year are Democrat Ron Bergstrom of Chatham and Republican Leo Cakounes of Harwich. Both are currently delegates from their respective towns to the County Assembly of Delegates. Mr. Cakounes describes himself as a farmer businessman with a large organic cranberry acreage; Mr. Bergstrom is a shellfishing businessman. (Mr. Bergstrom won.)

The next meeting of the Assembly of Delegates will be held on Wednesday November 7 at 4pm. Following the report of the **Board of Regional Commissioners** on county issues, there will be reports from **Children's Cove** and the **Human Services** Staff on opioid prevention, continuum of care and dementia planning, as well as communications from public officials and the public. Subsequently, the Assembly will discuss FY20 Budget reviews and other business.

THANKS TO YOUTH SERVICE & VOTER SERVICE EFFORTS

Karen Mazza (Youth Service Chair) and **Rosemary Shields** (Voter Service Co-Chair) recently received the following letter from **Carol Woodbury, Superintendent of Schools, Dennis-Yarmouth Regional School Board:**

“Dear Karen and Rosemary:

*On behalf of the Dennis-Yarmouth Regional School District, I would like to express my gratitude to the League of Women Voters for its generosity to (our) district during our recent voter registration drive. Please extend our appreciation as well to **Jan Hively, Florence Seldin, Anita Rogers, Carlyn Carey and Cindy Battis** for volunteering at our district open houses during the month of September.*

“A special thanks to you, Karen and Rosemary, for recruiting the volunteers and organizing the schedule, as well as attending. Your help is much appreciated!”

Congratulations and thanks to ALL who assisted in a very busy, very critical voting season!

And thanks to Treasurer Ira--

We're a little late in announcing it, but Ira Seldin, our longtime, hardworking Treasurer, has retired. (Only to be succeeded by longtime, hardworking LWV member Amy Harris.) We are hugely grateful to Ira for keeping our bottom line in line for the last five years.

We know that Ira has plenty of other interests to keep him busy in retirement, but one that has attracted our attention recently is of a literary nature.. On July 27, the following Letter to the Editor appeared in the Cape Cod Times: “I am getting tired of the word “deal” used continually by (our president) and parroted by print and electronic media. It may have been started by FDR, who in 1933 introduced the “New Deal” as an economic stimulus to bring the country out of the Great Depression. Harry Truman’s “Fair Deal” then followed in 1949. The recent book, “The Art of the Deal” by President Trump and Tony Schwartz popularized the word. (or) look at Mr.Trump’s recent statement in the U.K., referring to Theresa May’s government. “If they do a deal like that, we would be dealing with the European Union instead of dealing with the U.K, so it will probably kill the deal.” (Continued...)

The New York Times refers to the Disney-Fox deal". USA Today reports that AT&T's CEO is confident the "Time-Warner deal" is on solid ground. Websites...promise "sickdeals" and "dealnews".

Whatever happened to good English words like agreement, treaty, pact, etc.?
If this keeps up, I fear we will all be getting a raw deal."

Thanks for this, Ira and sincere thanks for your years of service to LWVCCA.

Happy Thanksgiving to All



Coming in January -- LWVMA Study 2018-2019 **The Ballot Question Process**

Every two years, Massachusetts voters may be called upon to vote, by means of questions on the ballot, whether or not to enact new laws, amend the constitution, or repeal recently passed laws.

On election day this year, we will vote on three ballot questions -- one relating to nurse staffing in our hospitals, one to create a commission to consider amendment(s) to the Constitution to limit the influence of money in our elections and the third a referendum on an existing law prohibiting discrimination on the basis of gender identity in places of public accommodation. *Continues...*



Here are some facts you may not know about **citizen-initiated state ballot questions**, known as the “Initiative and Referendum” process:

- Massachusetts is one of 26 states with an initiative and referendum process. We are one of only two states in New England to have this mechanism. The other is Maine.
- A citizen-initiated *constitutional amendment* has been attempted only three times in the past 100 years since the I and R process was added to the MASS Constitution
- Signatures must be collected twice**, in the fall and again in the spring, to get a proposed new law on the ballot.

Why is LWV involved?

At its convention in 2017 LWVMA members determined that the ballot question process is an area for study. This study incorporates the intersection of the League’s areas of mission: voting and advocacy. LWVMA has never studied the initiative and referendum process in MA and thus has no positions on it.

What is LWVCCA’s role?

At its September Board Meeting our board voted to participate in the LWVMA study and appointed a study committee including Florence Seldin, facilitator; Lisa Draper, Scotti Finnegan and Margaret “Peggy” Rose. The committee will be reviewing all the materials and preparing to lead members through the *consensus* meeting which will be held on

Continues...

January 15 from 9-1 at the Harwich Community Center. In the meantime, you can go to LWVMA.org and click on Ballot Question Study (right side of page). There are many documents posted on the site, but the study committee urges you to read the **18-page Study Guide** which we will be using at the Consensus meeting and also to at least skim the **26-page Study Report** which the Study Committee will be summarizing for you. (Of course, you are free to read all the other documents and appendices.) These materials were researched and prepared by a Study Committee appointed by the State Board.

FINALLY, PLEASE SAVE YOUR RED VOTER INFORMATION BOOK to bring to the consensus meeting on January 15. If you have questions please feel free to contact Florence Seldin 508-945-4464 or florencecape@comcast.net

And look for updates in upcoming issues of the VOTER



697 Main Street
Chatham, MA 02633
e-mail: alan@elinsurance.com

Tel: 508-945-0393
800-945-1840
Res: 508-430-2609
Fax: 508-945-4048

**PORTSIDE
LIQUORS**

*Fine Domestic
and Imported Wines*



*Premium
Cigars*

*Coldest Beer...
Warmest People!*

JOHN KENNEY
johnkenney@portsideliquors.com

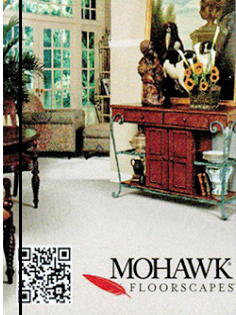
(508) 432-1650

1421 Route 39
East Harwich, MA 02645



Russell P. Morris
Owner

192 Rt. 137 · E. Harwich, MA 02645
508-432-4151 · Fax: 508-432-4162
rick@rpmcarpets.com



www.rpmcarpets.com

MOHAWK MAKES *the* ROOM

Yankee Ingenuity
525 Main St. Chatham, MA 02633
(508) 945-1288
coolstuff@yankee-ingenuity.com
www.yankee-ingenuity.com



Jon Vaughan

A gallery with a different point of view



CHATHAM SQUIRE

EST. 1968

487 MAIN STREET,
CHATHAM, CAPE COD, MA 02633
www.thesquire.com

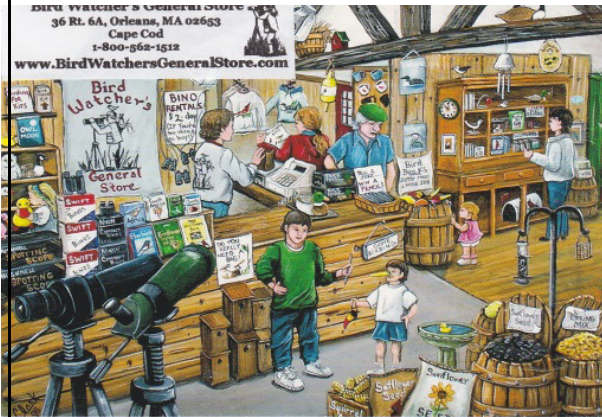
Elizabeth Hogan LMT, CCH, AMTA

Myofascial Pain Relief, Certified Crystal Healing, Usui Reiki

48 Eldredge Park Way, Orleans, MA 02635

508-255-5598

myofascialandenergytherapies.com



The Real Estate Referral Registry, Inc.

a wholly owned subsidiary of Jack Conway & Co., Inc.

Patricia A. Ryle
Referral Associate

*Your connection for all
your Real Estate needs*

www.jackconway.com

781.689.5402
patr1111@hotmail.com