



Immigration Reform: Paths forward?

League of Women Voters, Pasadena, March 5, 2020



Overview

- ▶ I. Avenues for immigration
 - ▶ History of racial exclusion
 - ▶ Contemporary categories
 - ▶ Current obstacles
- ▶ II. Enforcement: Law and Policy
 - ▶ Border enforcement
 - ▶ Interior enforcement
 - ▶ Federalism questions
- ▶ III. The federal immigration bureaucracy



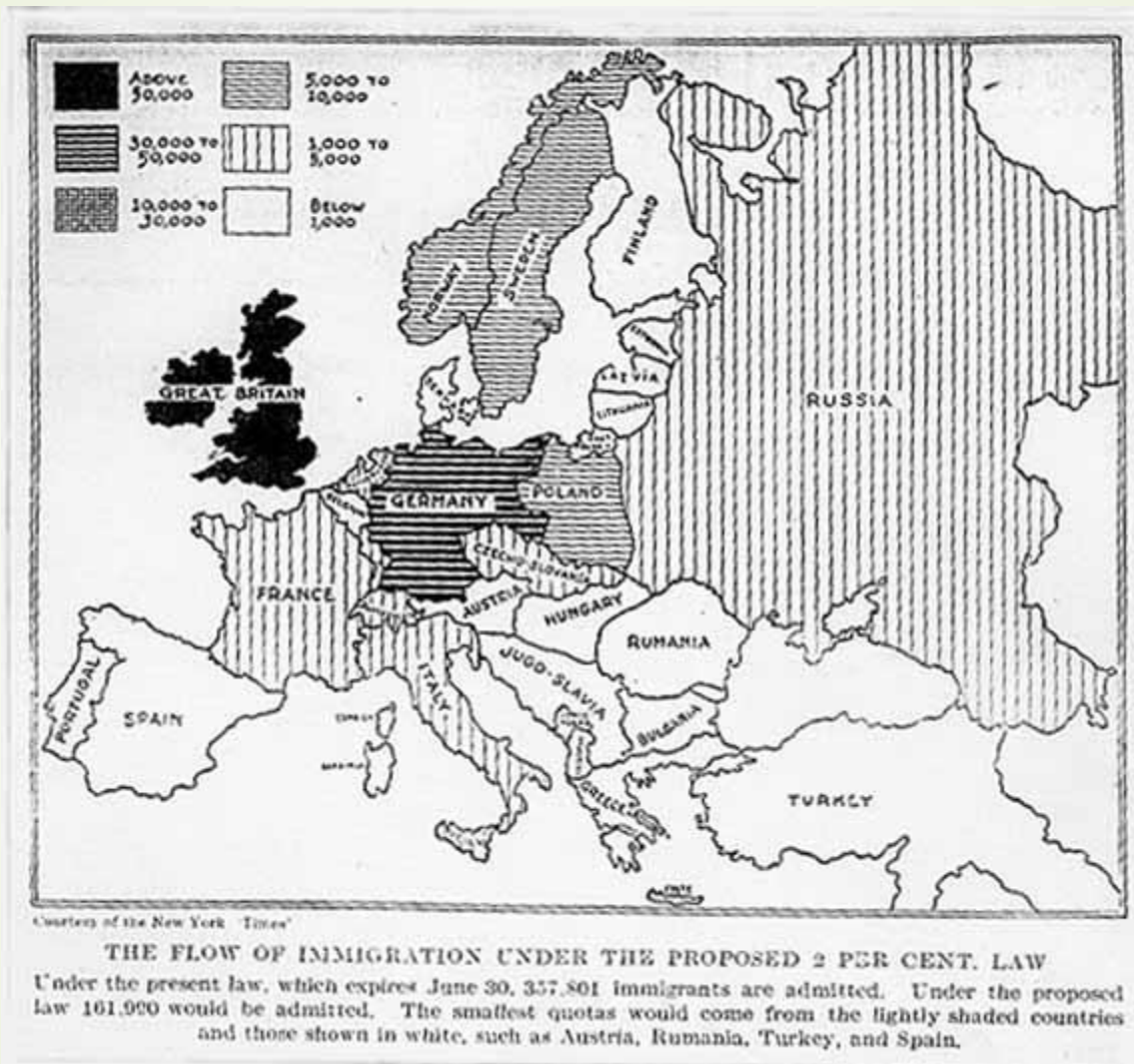
Avenues to immigration



“Throwing Down the Ladder by Which They Rose,”
Thomas Nast, *Harper's Weekly*, July 23, 1870.
Encyclopædia Britannica, Inc.



Source:
New York
Times

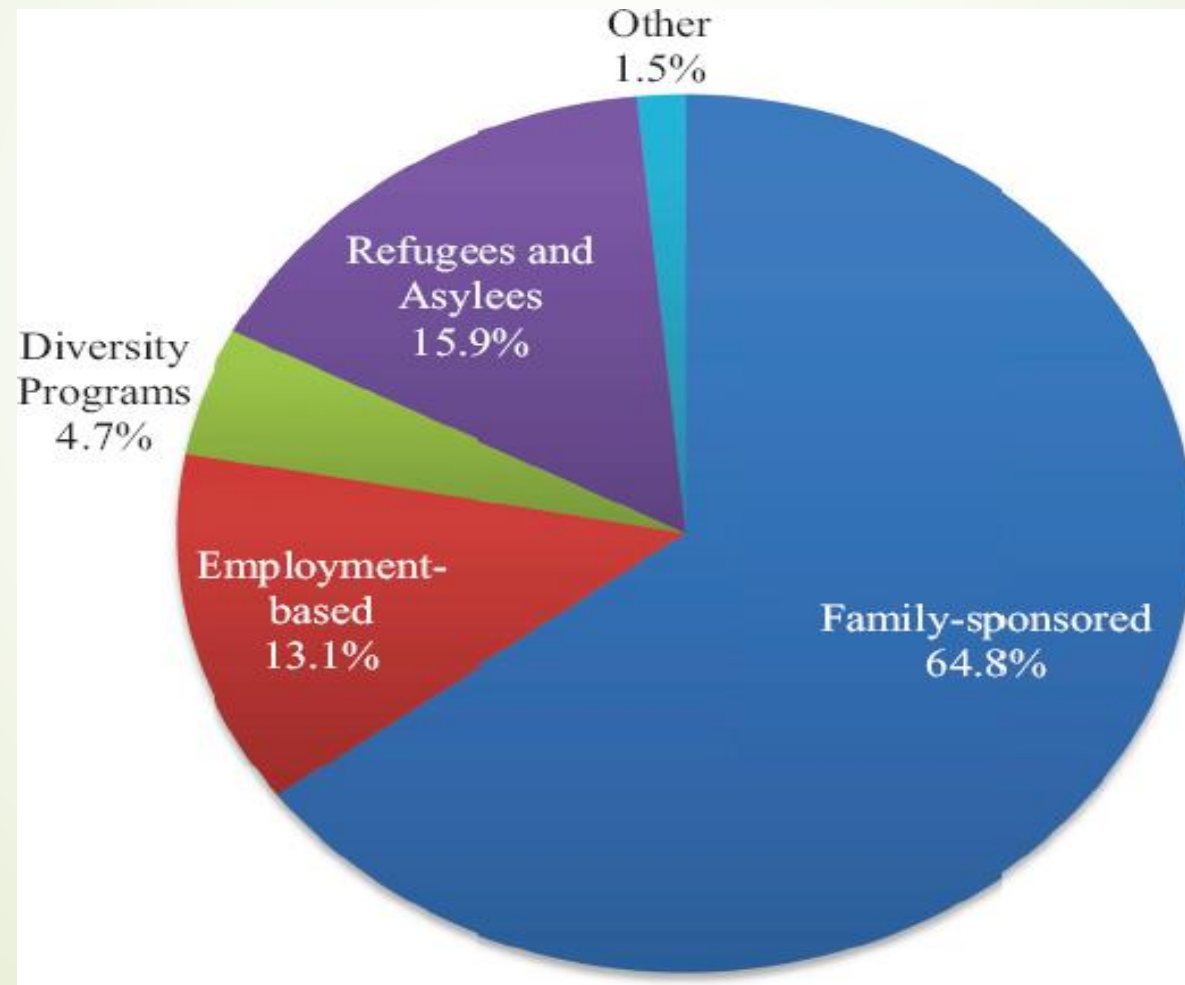


Yoichi Okamoto - White House Photo Office; to Lyndon Baines Johnson Presidential Library & Museum.



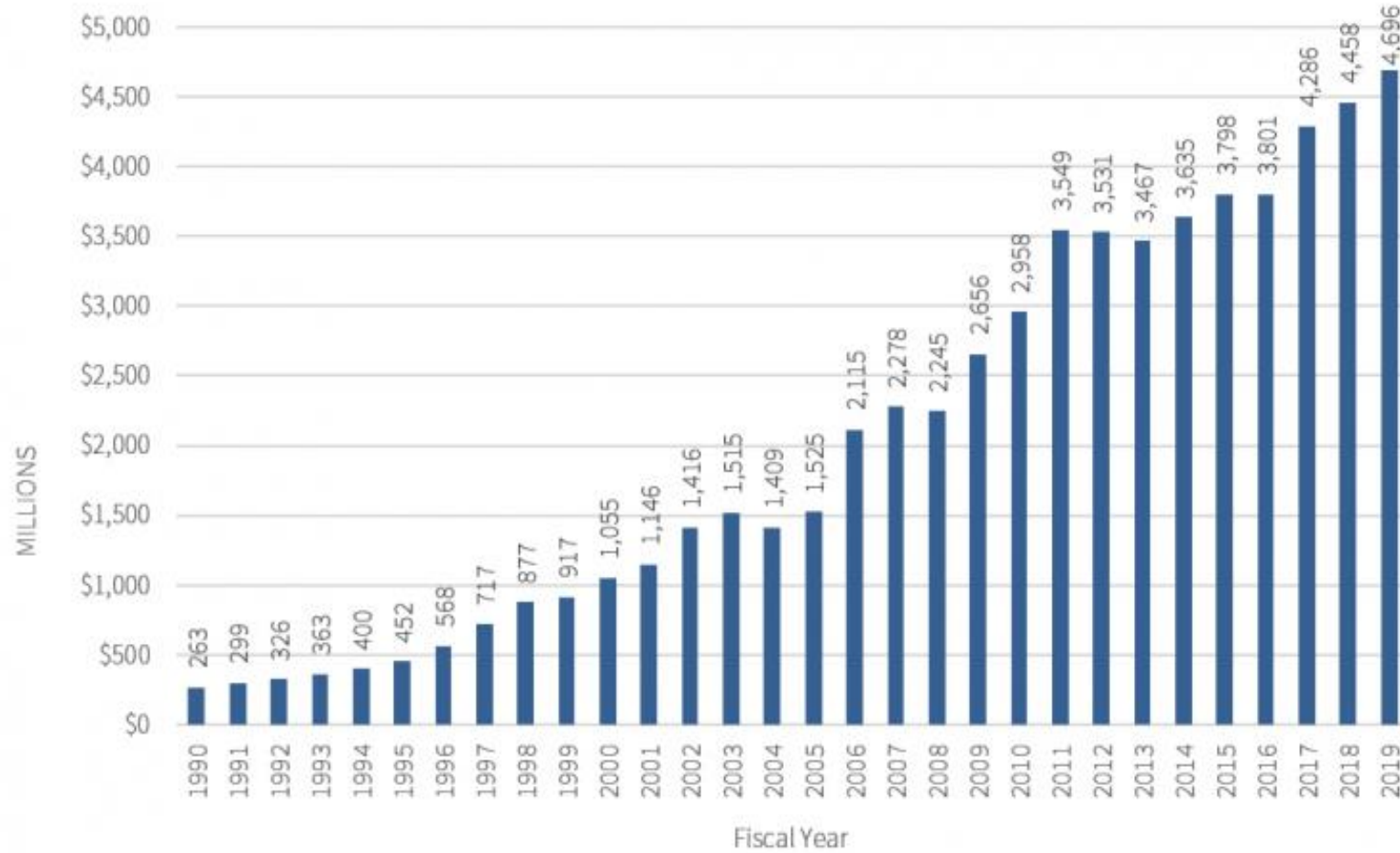
Lawful permanent resident admissions by category

Data from [Office of Immigration Statistics \(2014\)](#).
Pie Chart from National Academies Press [The Integration of Immigrants into American Society](#)
Page 127.



Data compiled by
the U.S. Immigration Counsel
Fact Sheet: The Cost of
Immigration
Enforcement and Border
Security., Oct. 14, 2019

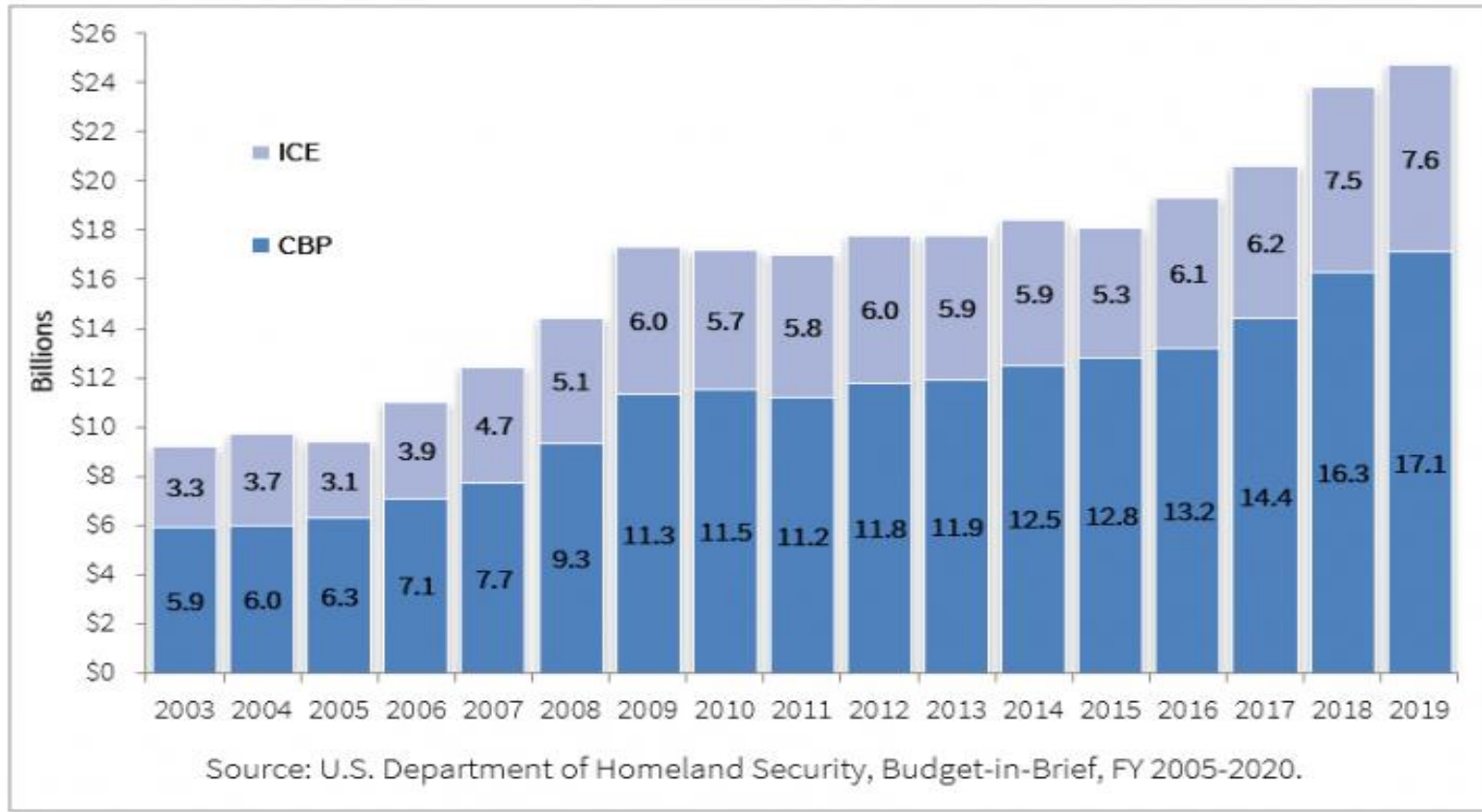
Figure 1: U.S. Border Patrol Budget, FY 1990-2019



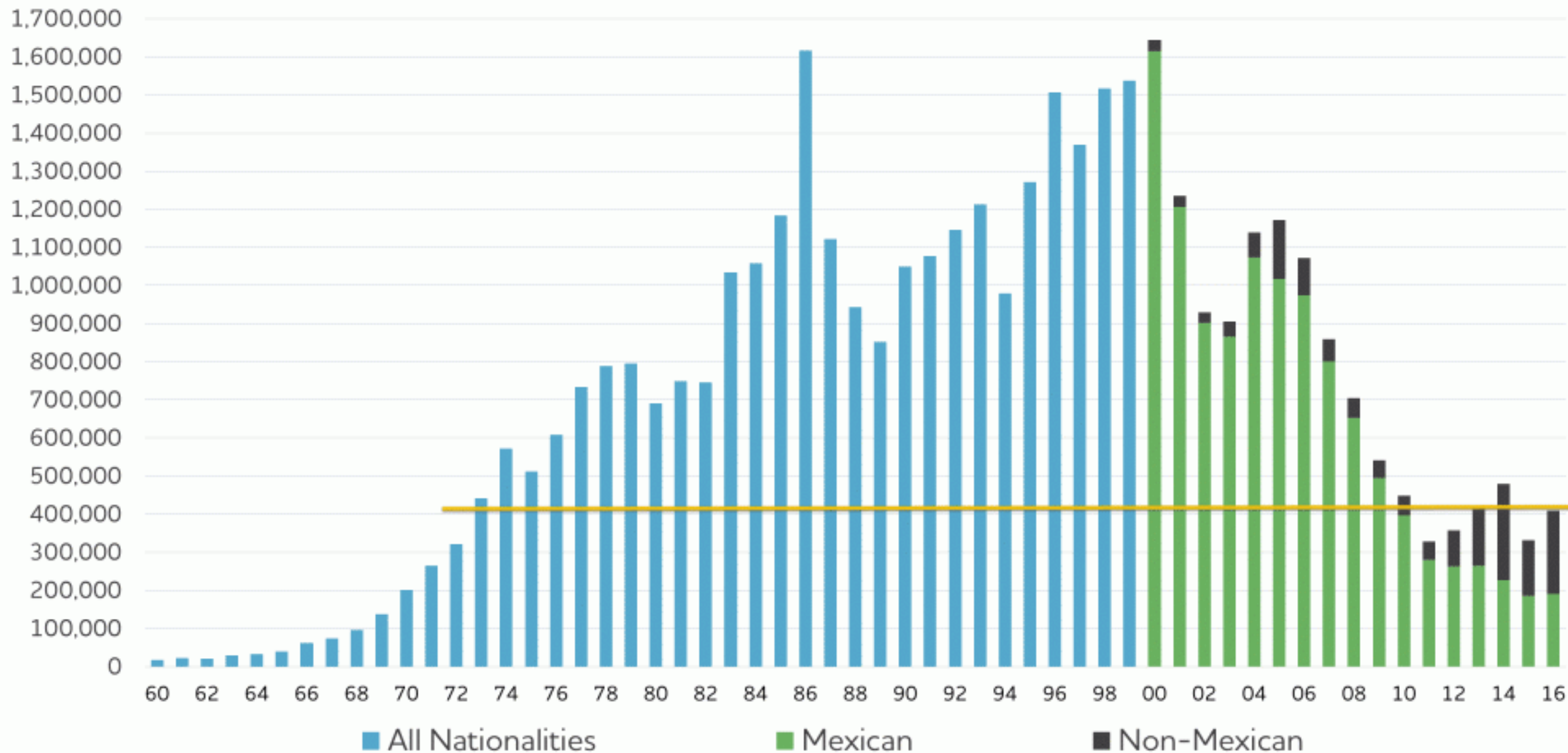
Source: U.S. Customs and Border Protection, "U.S. Border Patrol Fiscal Year Budget Statistics (FY 1990-FY 2019)"

Source: Same as previous slide.

Figure 2: CBP & ICE Annual Budgets, FY 2003-2019

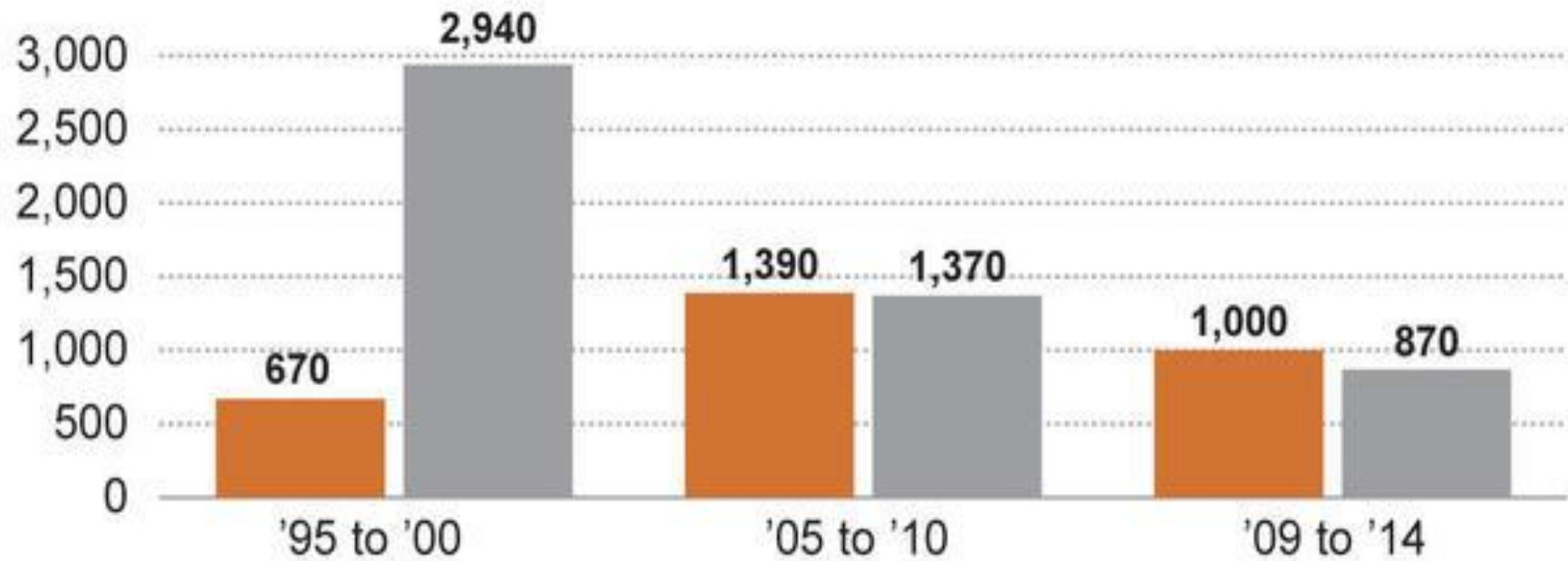


Southwest Border Migrant Apprehensions Have Dropped to Early 1970s Levels



Net migration from Mexico (In thousands)

■ U.S. to Mexico ■ Mexico to U.S.



Source: Pew Research Center: Hispanic Trends, *More Mexicans Leaving the U.S. Than Coming In*, November 19, 2015



Unauthorized population

Total est. population: 11,009,000

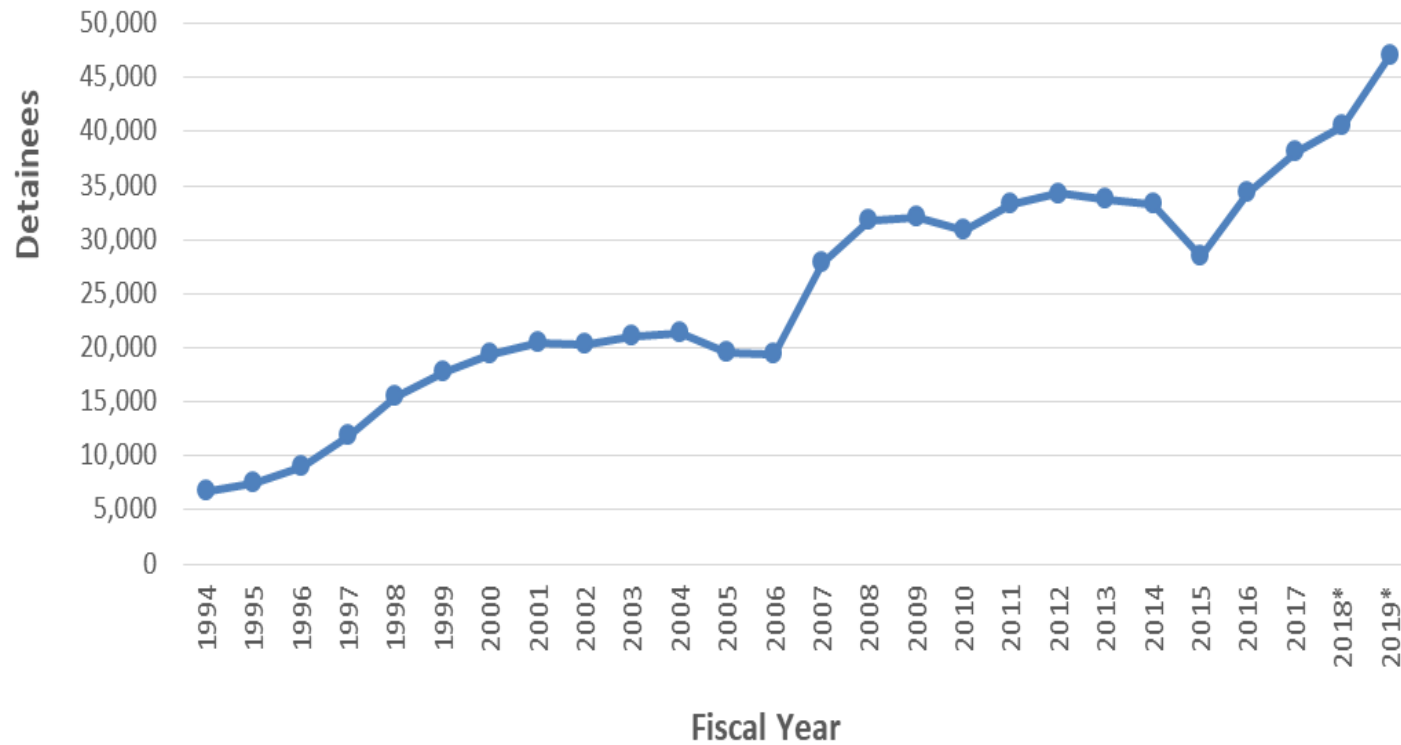
Years of U.S. Residence

Less than 5	1,989,000	18%
5 to 9	2,569,000	23%
10 to 14	2,943,000	27%
15 to 19	1,802,000	16%
20 or more	1,705,000	15%

Source: Pew Research Center: *Hispanic Trends, Size and Characteristics of the Unauthorized Population*,

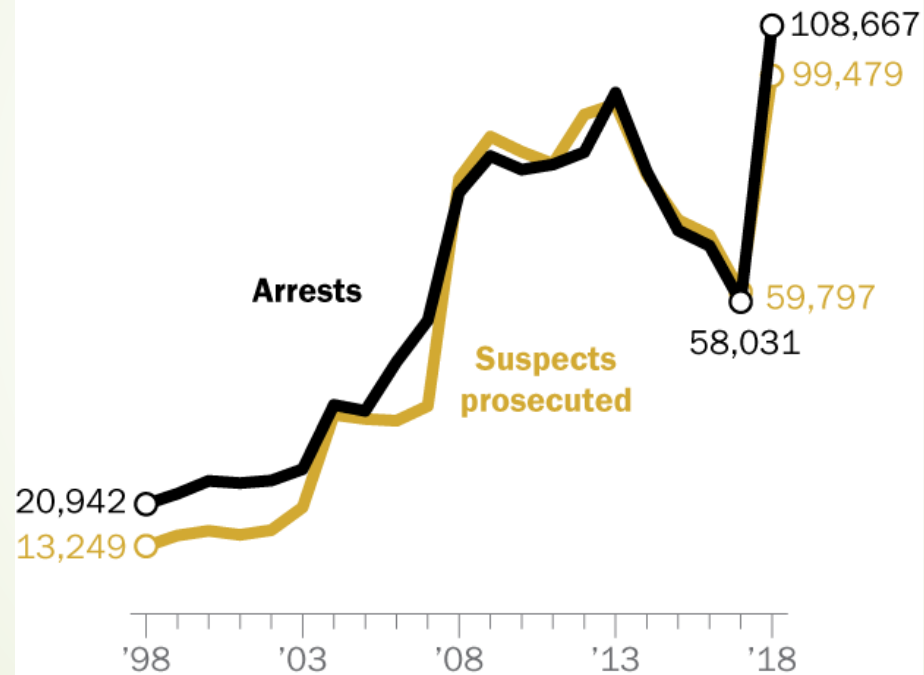
Source: J. Rachel Reyes,
Center for Migration
Studies, Immigration
Detention: Recent Trends
and Scholarship

**Average Daily Population (ADP) of Immigrant Detainees,
FY 1994-2019**



Arrests, prosecutions for immigration offenses surged in U.S. in 2018

Number of federal criminal arrests and suspects prosecuted for immigration offenses, by fiscal year

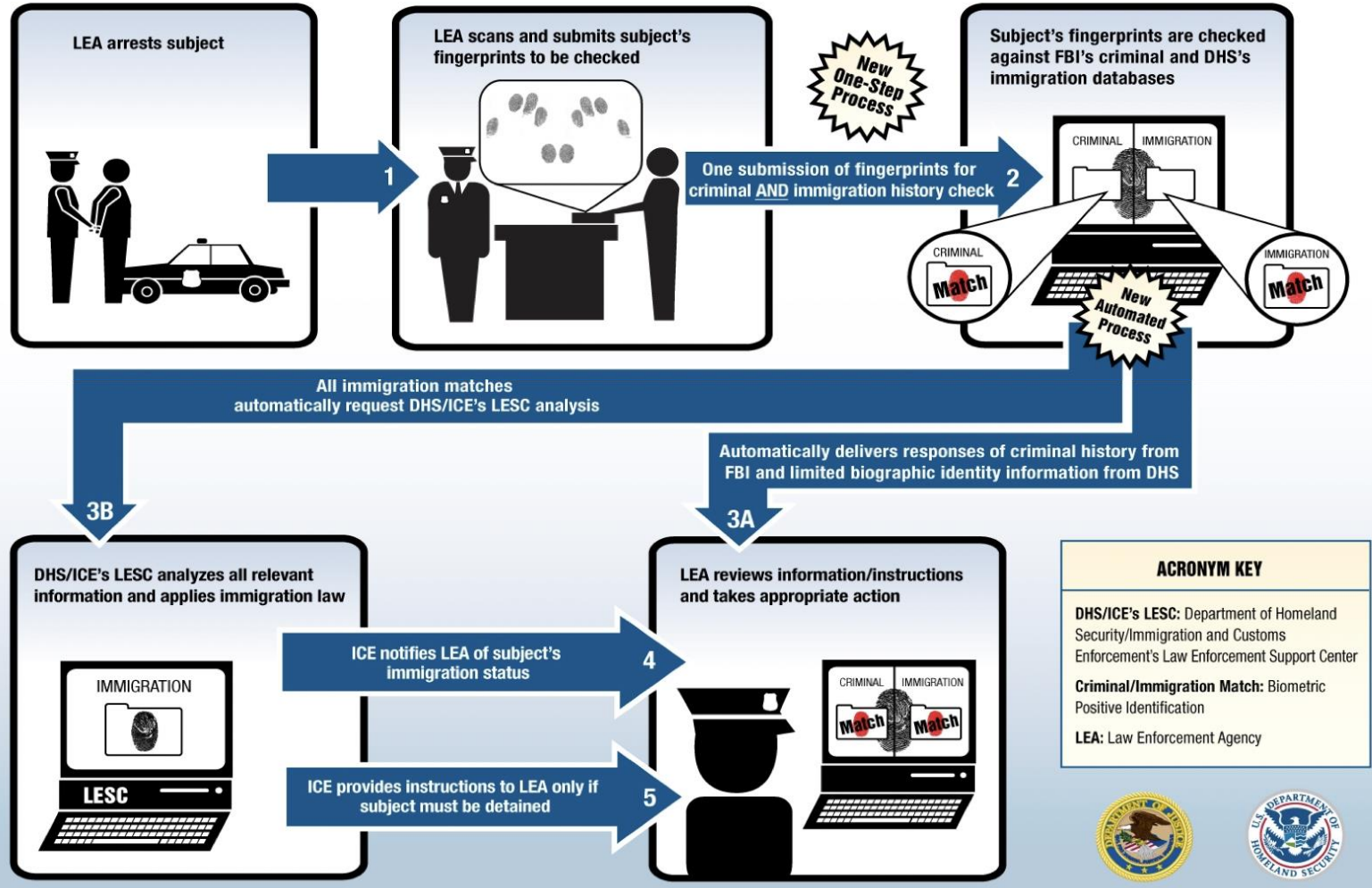


Source: Bureau of Justice Statistics.

PEW RESEARCH CENTER

New Automated Process

Improves Information Sharing Between Federal Agencies & State or Local Law Enforcement



Source: ICE.gov