

# LWV<sup>®</sup> Voter

September 2021

Dear League Members and Friends,

Hi, I'm Satsie Veith, the new LWVBC president. I have been a League member only 2 ½ years, so this is quite a challenge. When I feel a bit daunted by the job, I remember that I have a very experienced and capable group of people to work with, including all of you.

A few words on upcoming events and goals:

**LWV Fall Membership Coffee, Saturday, Sept. 11** (see *Save the Date Info* on page 4): This will be LWVBC's first in-person event since the June 2020 Annual Meeting. The meeting will be held outside, but due to continuing concerns about COVID-19, we encourage attendees to wear masks and practice social distancing. We are pleased to have Professor Charley Turner speaking on the history and impact of recall elections (and just three days before the recall election period ends on Sept. 14!) You will also get to hear about and sign up for LWVBC program events in the coming year as well as meet other League and community members.

**LWV Voter Registration Outreach:** Our Voting Services Director, Patty Haley, has been very busy organizing teams of League members to register voters at the Chico Thursday Night Farmers Market in September and Johnny Appleseed Days in Paradise on October 2nd and 3rd. Thanks to all those who volunteered!

**LWV Water & Other Programs:** Please read Natural Resources Director Toni Reid's exciting plans for a program on Butte County water issues (on page 4), and an appeal from Social Policy Director Janet Rechtman for thoughts and ideas on homelessness and housing (on page 6).

Much more is possible with your help! Please come to the Fall Coffee to sign up for projects you believe in and to give us new ideas. Whether or not you can make it to the Coffee, please feel free to contact me via email at [presidentlwvbutte@gmail.com](mailto:presidentlwvbutte@gmail.com) or by mail – LWVBC President, P.O. Box 965, Chico, CA, 95927. I would love to hear your suggestions or concerns. Or, contact the Program Committee Directors at the contact information provided at the end of this newsletter.

This is your League. We need to hear from you.

Sincerely,

**Satsie Veith**

LWVBC President

## Inside this issue

- [How to Vote in the Recall Election](#)
- [Drawing Lines for Butte County Supervisor Districts](#)
- [LWVBC Membership and Participation](#)
- [Upcoming Program Offerings Open to the Public](#)
- [Harvesting Membership Questions](#)
- [LWVBC Website Tour](#)
- [Membership Form \(to print\)](#)
- [Donate](#)
- [Board Members](#)
- [LWVBC Mission](#)

**LWV** LEAGUE OF WOMEN VOTERS<sup>®</sup>  
OF BUTTE COUNTY (CA)

PO Box 965, Chico, CA 95927

[www.lwvbuttecounty.org](http://www.lwvbuttecounty.org)

(530) 895-VOTE (8683)

# How to Vote in the Recall Election on September 14

Here's how the vote will be held in Butte County leading up to and on **Election Day, September 14** – the California Gubernatorial Recall Election.

**Voters will receive their ballots by mail:** The Butte County Registrar of Voters office began mailing ballots to registered voters on August 16.

**Check the status of your registration here:**

<https://voterstatus.sos.ca.gov/>

**Track the status of your ballot here:**

<https://www.sos.ca.gov/elections/ballot-status/wheres-my-ballot>

## Returning your ballot:

*Be sure to follow all instructions when completing and returning the ballot.* You may return your ballot in the following ways:

1. Deposit in **U.S. Mail** postmarked no later than Sept. 14,
2. Deposit in a **ballot drop box** no later than 8pm on Sept 14 (see locations below),
3. **Bring to a Voter Assistance Center (VAC)** (see locations and hours below),
4. By **Remote Accessible Vote by Mail Ballot (RAVBM)**– you can request that your ballot be sent to you by e-mail, though you must still print it out and return it by mail or fax. For information or to sign up, contact the County Registrar of Voters at (530) 552-3400 Option 1 or (800) 894-7761.
5. If you are unable to go inside a VAC, by **curbside voting** (someone can go in the VAC to request help or you may call the phone numbers in (4) above.
6. If you cannot safely travel to a VAC, you may **contact one of the following agencies** to assist you: Disability Action Center, B-Line Transit, Disability Rights Calif.

At a **Voter Assistance Center (VAC)**, you can register to vote, get a replacement ballot, and help related to voting. Two VAC's will be open for **eleven days**:

## Hall of Records, 155 Nelson Ave., Oroville

Hours: Saturday, Sept 4, thru Monday, Sept 13  
8am to 5pm. On Election Day, open 7am to 8pm.

## Chico Masonic Family Center, 1110 W. East Ave., Chico

Hours: Saturday, Sept 4, thru Monday, Sept 13: 9 am to 5 pm. On Election Day, open 7 am to 8 pm.

**First Vote:**  
"No" means you do not want to recall Governor Newsom.  
  
"Yes" means you want to Recall Governor Newsom.

**Second Vote:**  
Either way you vote on the recall, be sure to vote for Your Choice for Governor in case a majority of people vote "Yes" to Recall.



Photo by Ryan Cruse

*A Friendly Reminder from the League of Women Voters of Butte County.*

**Your Vote Counts**  
Please take time to reflect on your choices.

## Four VAC's will be open for four days:

- Chico Fraternal Order of the Eagles, 1940 Mulberry St.
  - First Baptist Church, 850 Palmetto Ave., Chico
  - Butte County Fairgrounds, 199 E. Hazel Street, Gridley
  - Paradise Veterans Memorial Hall, 6550 Skyway.
- Locations will be open Sept. 11 -13 from 9am to 5pm. On Election Day, open 7am to 8pm.

**Ballot Drop Box Locations:** There are thirteen ballot drop box locations in Butte County. All Drop Boxes will be available from August 17 until 8pm on Election Day.

## Biggs/Gridley:

- Biggs City Hall, 465 C Street, Biggs
- Butte County Library-Gridley, 299 Spruce St., Gridley

## Chico/Durham:

- Butte County Library-Chico, 1108 Sherman Ave.: *drive-through drop-off at the back of the parking lot.*
- Chico State – BMU, W. 2<sup>nd</sup> Street and Chestnut Street
- Chico City Hall, 411 Main Street
- Dept. of Employment & Social Services, 765 East Ave.
- Durham/Butte Co. Library, 2545 Durham-Dayton Hwy.

## Oroville/Palermo

- Hall of Records, 155 Nelson Avenue, Oroville
- Butte County Library – Oroville, 1820 Mitchell Avenue
- Oroville City Hall (indoor-available during office hours) 1735 Montgomery Street
- Palermo Unified School District, 7390 Bulldog Way, Palermo

## Paradise:

- Butte County Library – Paradise, 5922 Clark Road
- Paradise Town Hall, 5555 Skyway

Chico State leads the CSUs in the Ballot Bowl as the [campus encourages students to register to vote](https://caballotbowl.sos.ca.gov/) in the Recall Election.



Check it out: <https://caballotbowl.sos.ca.gov/>



# Drawing the Lines for State and Local Districts

## Join Rosie the Redistricter



*Do you think voters should pick their representatives -- rather than representatives picking their voters?*

*Do you seek to keep communities with common interests together to strengthen their voice in government?*

## LET'S GET TO WORK

### Butte County Board of Supervisors

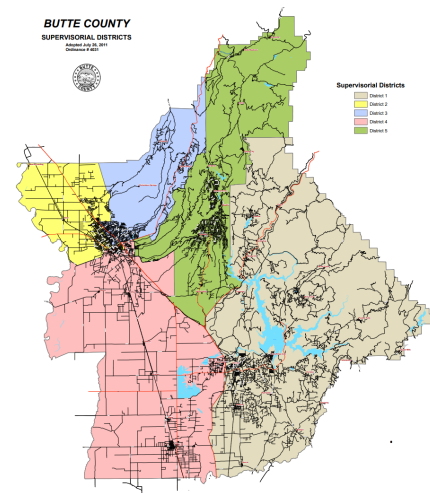
The new census count will result in major changes to Butte County supervisorial districts. Our population decreased after the Camp Fire in fall 2018. As noted in the Enterprise-Record article, "[Butte One of 11 California Counties to Lose Population](#)," by Steve Schoonover, Butte County's population shifted from approximately 230,330 in July 2018 to 218,726 in July 2021. Since the 5 supervisorial districts require approximately equal populations, district boundaries must change.

The supervisors voted (July 20, 2021) to conduct the redistricting process themselves, rather than delegate to an independent or advisory body (lack of time was cited). However, by law, the Board must invite and consider written and oral public

testimony on how those lines should be drawn, and members of the public may submit their own maps for consideration.

This will happen quickly and plans are being formed. If you want to be involved or kept aware, watch this website for meeting schedules and information: <http://www.buttecounty.net/redistricting>.

On the following website, you may draw your own district maps and submit them to the Board for consideration: <https://districtr.org/>.



### Get Involved in State-Wide Redistricting

The California Redistricting Commission will be drawing the new district lines for US Congress, CA Senate and Assembly, and the Board of Equalization.

Here's how you can be involved: <https://www.wedrawthelinesca.org/participate>

#### Participate in 3 Easy Steps



#1  
**DESCRIBE**  
your community



#2  
**DRAW**  
your community on a  
map



#3  
**SEND**  
your testimony directly  
to the Commission

# LWVBC Membership and Participation

Traditionally, membership has been a focus of the September Fall Coffee meeting for the League. We are continuing that tradition this year!

Members were emailed a Save The Date invite to our September 11 meeting featuring guest speaker Dr. Charley Turner. We hope you are able to attend and will share the invite with others to encourage greater participation in our local LWV.



You may renew your annual dues at the September Coffee at the membership table. Dues are **\$75** for an individual, **\$125** for a household, and **\$15** for students. LWVBC pays \$32 per member to the LWVUS and \$28 to the LWV of California. This leaves \$15 per individual members and \$5 for a household for Butte County efforts.

Whether you renew in-person or online, we hope you will consider making an additional [donation](#) to help cover processing costs or to further support LWVBC in the coming year.

The link to the online membership renewal form is: <http://lwvmcva.net/sites/default/files/lwvmembership.pdf>. You may also print the [membership dues form](#) in this newsletter to renew or share with a potential new member.

Checks should be made payable to **LWVBC** and mailed to:

**P.O. BOX 965  
CHICO, CA 95927-0941**

We also would like you to please consider signing up and participating in one or more of the following committees:

**Government Committee:** learn more about how government functions, particularly at the local and state level, and preparing programs on issues including money in politics; the legislative process; protecting voting rights; redistricting, etc. If you are interested, please contact Frederica "Freddie" Shockley at [freddieshockley@gmail.com](mailto:freddieshockley@gmail.com).

**Social Policy Committee:** learn about issues facing our community such as homelessness, education, health care, juvenile justice, etc. If interested in helping us prepare programs on social issues, please contact Janet Rechtman at [drjr@uga.edu](mailto:drjr@uga.edu).



**Natural Resource Committee:** There is much we can do to educate our community about water issues and efforts to deal with biomass cleanup from the recent fires. There may also be other natural resources areas you would like to see explored. Please consider signing up to be part of our Natural Resource Committee. We hope to do an educational presentation soon on water issues facing Butte County. Your help in planning such a presentation and your input on how it should be presented would be important and most welcome. Contact Toni Reid at 530-534-6591 or [t Reid100@gmail.com](mailto:t Reid100@gmail.com).

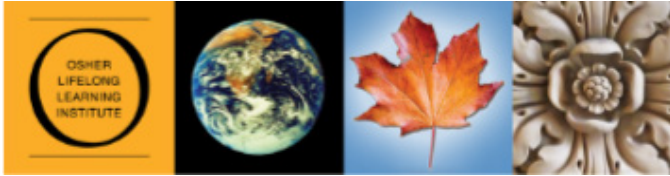




# Upcoming Program Offerings Open to the Public

The League of Women Voters of Butte County (LWVBC), a non-partisan political organization, *encourages informed and active participation in government.*

This fall, LWVBC and the Osher Lifelong Learning Institute at Chico State will collaborate on an online educational series open to the public.



*"The Basics of Civics: Citizenship, Voting, Census, Reapportionment, and Redistricting"* series will be led by former LWVBC president Debra Barger.

**The series will be offered on Thursdays from 3pm to 4pm from September 16 through October 7.**

Civics in America has a fascinating history of encouraging voices and silencing others. Together we will review highlights of citizenship, voter registration, voting, discuss some of the changes over time, and address issues which continue to this day; including engaging in the very timely issue of local redistricting for Butte County.

Additional series details:

**Meeting 1 Civics Basics I** – Citizenship, Voter Registration, and Voting: Historical background and today, across the US and CA specifically

**Meeting 2 Civics Basics II** – Voting, Census, Reapportionment

**Meeting 3 Redistricting** - How Does it Work? CA as a model for the US

**Meeting 4 Local Redistricting** – Drawing the lines

This series is available via Zoom.

Zoom information:

<https://csuchico.zoom.us/j/89412336492?pwd=cTdFaKpKeTl3dFF6OE1sNnlWdz09>

Meeting ID: **894 1233 6492**

Passcode: **OLLI2021**

Links to the Civics series will also be posted to the [LWVBC website calendar](#) and the [OLLI Fall Course Schedule](#).



We also want to share a link to a September 9 webinar on ["Preventing Catastrophic Wildfire, Strategies for Communities and Leaders."](#)

Jessica Morse, Deputy Secretary for Forest and Wildfire Resilience at California Natural Resources Agency, will speak on what California is doing about wildfire mitigation and how California's efforts compare with other states.

We will also hear from community members who will share success stories about how local governments and citizenry can join forces to mitigate wildfire threats.

The event is hosted by the LWVCA Wildfire Team. If you are interested, [REGISTER HERE](#). The webinar begins at 11am.

## Current Year Statistics

The below statistics are tracked on a weekly basis and provide a snapshot of the number of fires and acres burned. These are preliminary numbers taken from our Computer Aided Dispatch (CAD) system, and will likely change as dispatched wildfires may end up being other types of fires or false alarms. These numbers are subject to change until the final fire season reports are completed and tabulated.

### Year to Date Wildfire Statistics (CAL FIRE and Federal)

Updated as of August 19, 2021

| Interval  | Fires | Acres     |
|---|-------|-----------|
| 5-Year Average (same interval)                  | 5,690 | 460,911   |
| 2021 Combined YTD (CALFIRE & US Forest Service) | 6,630 | 1,470,637 |
| 2020 Combined YTD (CALFIRE & US Forest Service) | 7,172 | 920,165   |

(These statistics are a combination of wildfires responded to by CAL FIRE in both the State Responsibility Area and the Local Responsibility Area under contract with the department, as well as federal fire agencies reported in the National Situation Report. Final numbers will be provided in the annual Wildfire Activity Statistics Report (Redbook) once it's published.)



# Harvesting Membership Questions

Last winter, LWVBC members voted to make housing and homelessness a social policy priority for the coming year, based on our local League's position the issue:

The League is in support of programs to meet the housing needs of Butte County residents – to provide equality of opportunity and an adequate supply of housing for all socioeconomic groups.

If you live in Butte County, you know there is no shortage of answers and opinions when the discussion turns to housing and homelessness.

From shelters to mental health to clean and safe parks



and streets to the interest of businesses to use of funds to collaboration across jurisdictional lines, the list is endless.



With so many possibilities, we would like your help in building our Social Policy programming around housing and homelessness.

Because opinions start with questions, we want to begin by asking challenging questions, then explore possible answers to these questions, and, finally, find paths to engagement around the answers that are most meaningful in our worlds.

**LWV** *Please let us know what questions this priority raises for you.*

**LWV** *What would you like to learn more about?*

**LWV** *What information would you like to see the League share with others?*

Please send your questions to: Janet Rechtman, Social Policy Director at [drjr@uga.edu](mailto:drjr@uga.edu), or by snail mail to LWVBC, P.O. Box 965, Chico, CA 95927.

Thank you in advance for your participation.

## LWVBC Website Tour

Have you explored the [LWV website](#)? Maybe just checked the [Calendar](#)? Here are some places to look at.

**LWV** Misplaced your [Voter or E-Bulletin](#)? We have them all.

**LWV** Is anyone out there a Bylaws nerd? Check out [Bylaws](#) on the [About](#) page.

**LWV** State and Local groups support [Positions](#) on nonpartisan issues. Check them out.

**LWV** There is a wonderful history of 100 years of LWV linked from our About page, [Through the Decades](#).

- ★ BUTTE COUNTY
- ★ CALENDAR
- ★ ELECTIONS/VOTING
  - ELECTIONS/VOTING
  - Butte County Elected Representatives
  - Forum Videos
- ★ LOCAL EVENTS
- ★ ABOUT
- ★ JOIN
- ★ DONATE
- ★ NEWSLETTERS
- ★ ARTICLES
- ★ POSITIONS
- ★ ISSUES
- ★ STUDIES
- ★ ACTION ALERTS
- ★ CONTACT US

**LWV** New to the LWV? You can check out [Past Events](#) on the bottom of our Calendar Page.

**LWV** Some real useful information can be found on the left side of the web pages.

**LWV** [Write to Congress](#) will get you a list of every national and local person including Sheriff and City Clerk with address, phone, etc. No excuse for not communicating.

**LWV** We subscribe to [Articles from State LWV](#).

**LWV** Last but certainly not least is the number one tool to help with ballot and election information based on your address. [Voter's Edge](#) (also on the left of web pages) for in depth information.

**LWV** And [Contact Us](#). Maybe you will find a vacant board position that would interest you.



## MEMBERSHIP DUES FORM

(Printable)

Thank you for supporting the League of Women Voters of Butte County. Membership is open to all individuals who are at least 16 years of age. Please make your *Membership Dues* check payable to: **LWV of Butte County** and enclose this form with your remittance to **P.O. Box 965, Chico, CA 95927**.

|                                     |          |       |
|-------------------------------------|----------|-------|
| Individual. . . . .                 | \$75.00  | _____ |
| Household (2 individuals) . . . . . | \$125.00 | _____ |
| Student. . . . .                    | \$15.00  | _____ |
| Donation. . . . .                   |          | _____ |
| Total Remittance                    | \$       | _____ |

Tax deductible donations to our Education Fund may be made through our North Valley Community Foundation fund, and payable to LWVBC Education Fund of NVCF.

Dues and Donations may also be paid online at:  
[www.lwvbuttecounty.org](http://www.lwvbuttecounty.org)

Name(s) \_\_\_\_\_ Address \_\_\_\_\_

City, Zip \_\_\_\_\_ Phone \_\_\_\_\_ Email \_\_\_\_\_

*I am interested in working with the League on the following:*

Observing gov't agency meetings \_\_\_\_\_; Voter Registration drives \_\_\_\_\_; Civics and Voter Education \_\_\_\_\_  
 Social Policy Programs: Education \_\_\_\_\_; Health Care \_\_\_\_\_; Housing/homelessness \_\_\_\_\_; Other \_\_\_\_\_  
 Natural Resource programs: Water \_\_\_\_\_; Transportation/air quality \_\_\_\_\_; Climate change \_\_\_\_\_; Other \_\_\_\_\_  
 Fundraising \_\_\_\_\_; Membership/Communication outreach \_\_\_\_\_; Office Management \_\_\_\_\_; Tech support \_\_\_\_\_

## MEMBERSHIP DUES FORM

(Printable)

Thank you for supporting the League of Women Voters of Butte County. Membership is open to all individuals who are at least 16 years of age. Please make your *Membership Dues* check payable to: **LWV of Butte County** and enclose this form with your remittance to P.O. Box 965, Chico, CA 95927.

|                                     |          |       |
|-------------------------------------|----------|-------|
| Individual. . . . .                 | \$75.00  | _____ |
| Household (2 individuals) . . . . . | \$125.00 | _____ |
| Student. . . . .                    | \$15.00  | _____ |
| Donation. . . . .                   |          | _____ |
| Total Remittance                    | \$       | _____ |

Tax deductible donations to our Education Fund may be made through our North Valley Community Foundation fund, and payable to LWVBC Education Fund of NVCF.

Dues and Donations may also be paid online at:  
[www.lwvbuttecounty.org](http://www.lwvbuttecounty.org)

Name(s) \_\_\_\_\_ Address \_\_\_\_\_

City, Zip \_\_\_\_\_ Phone \_\_\_\_\_ Email \_\_\_\_\_

*I am interested in working with the League on the following:*

Observing gov't agency meetings \_\_\_\_\_; Voter Registration drives \_\_\_\_\_; Civics and Voter Education \_\_\_\_\_  
 Social Policy Programs: Education \_\_\_\_\_; Health Care \_\_\_\_\_; Housing/homelessness \_\_\_\_\_; Other \_\_\_\_\_  
 Natural Resource programs: Water \_\_\_\_\_; Transportation/air quality \_\_\_\_\_; Climate change \_\_\_\_\_; Other \_\_\_\_\_  
 Fundraising \_\_\_\_\_; Membership/Communication outreach \_\_\_\_\_; Office Management \_\_\_\_\_; Tech support \_\_\_\_\_



League of Women Voters of Butte County  
P.O. Box 965  
Chico, CA 95927



<https://my.lwv.org/california/butte-county/donate>

- [Renew Your Membership](#)
- [Donate](#)
- [Recruit New Members](#)
- [Volunteer for Board Positions](#)

---

### 2021-22 LWVBC Board Members

|                                    |                                  |
|------------------------------------|----------------------------------|
| <a href="#">Satsie Veith</a>       | President                        |
| <a href="#">Claire Greene</a>      | 1st VP - Voter Service           |
| <a href="#">Roxanne Ferry</a>      | 2nd VP - Membership              |
| <a href="#">Sandra Flake</a>       | Treasurer                        |
| <a href="#">Mahalley Allen</a>     | Secretary                        |
| <a href="#">Lori Fuentes</a>       | Director Communications          |
| <a href="#">Frederica Shockley</a> | Director Government              |
| <a href="#">Toni Reid</a>          | Director Natural Resources       |
| <a href="#">Patty Haley</a>        | Director Voter Registration      |
| <a href="#">Janet Rechtman</a>     | Director Social Policy           |
| <i>Vacant</i>                      | Director Countywide Liaison      |
| <i>Vacant</i>                      | Director Assistant Voter Service |
| <i>Vacant</i>                      | Director Natural Resources       |

### LWVBC's Mission....

Founded in 1920, the League of Women Voters is a non-partisan political organization that encourages citizens to play an informed and active role in government. At the local, state, and national levels, the League works to influence public policy through education and advocacy. Any person 16 years or older, male or female, may become a League member.

**LWVBC Board meetings are the 2nd Tuesdays each month at 5:30 pm.** During the COVID-19 pandemic, these meetings will be held via Zoom. All League members are welcome to attend and participate. Please reach out to President Veith for meeting Zoom credentials if you wish to join our meetings.

To contact a Board member, you may email them at their email (linked to their name on the left) or call 530-895-VOTE (8683) to leave a message. Please be sure to provide your name, contact information, and a brief description of what you need.