



# UPDATE

Newsletter of the League of Women Voters of Los Alamos

**League of Women Voters of Los Alamos**

**P. O. Box 158, Los Alamos, NM 87544**

[www.lwvlosalamos.org](http://www.lwvlosalamos.org)

Volume 72, Number 7  
November 2019

Co-Presidents: Barbara Calef [bfcale\(AT\)gmail\(DOT\)com](mailto:bfcale(AT)gmail(DOT)com) and  
Rebecca Shankland [rebecca.shankland\(AT\)gmail\(DOT\)com](mailto:rebecca.shankland(AT)gmail(DOT)com)  
Newsletter: JoAnn Lysne [j.lysne\(AT\)runbox\(DOT\)com](mailto:j.lysne(AT)runbox(DOT)com)

## ***Calendar***

- November 5 Election Day
- November 19 Lunch with a Leader, Liz Martineau and Leslie Linke, Mesa Public Library, 11:45 a.m.
- December 3 Board Meeting, Mesa Public Library, noon
- December 7 Advocacy Workshop, State Capitol Rm. 322, 10 a.m.-noon
- December 10 Lunch with a Leader, Rep. Christine Chandler, Mesa Public Library, 11:45 a.m.
- January 8 Legislative Preview, Fuller Lodge, 7 p.m. (6:30 for refreshments)

## ***Lunch with a Leader: Liz Martineau and Leslie Linke***

The November 19 LWV program will be held in Mesa Library at 11:45 and will feature Liz Martineau, Executive Director of the LA Historical Society, and Leslie Linke, chair of the LA Historic Preservation Advisory Board.

Liz Martineau was born into a military family and believes that her early travels led to a life-long love of people, cultures, and life-long learning. She has family in Kentucky, Indiana, and Kansas. She graduated from Kansas State University and has a Master's degree in instructional leadership. She spent 15 years teaching school and then worked for Los Alamos

National Laboratory as an education specialist for 12 years. Her passion for community led to her current position as the head of the Los Alamos Historical Society. On the weekends you might find her quilting, hiking, and camping.

Leslie Linke is very active at the Los Alamos History Museum (docent and tour guide). Born and raised in Los Alamos, she spent 38 years at Los Alamos National Laboratory, and retired four years ago. She always thought she had a pretty good grasp of the history of Los Alamos. However, since becoming involved in the board and the museum, she has learned so much more about the unique and extraordinary history of Los Alamos and the Pajarito Plateau. Our history is not just for our visitors; Linke encourages all

residents of Los Alamos to visit the History Museum and take a tour of the Historic District. Linke plans to talk about the charter of the Historic Preservation Advisory Board and their recent projects as well as how their activities differ from the Historical Society. Martineau will discuss the activities the Historical Society provides and how the two organizations work together.

Our December 10 Lunch with a Leader will feature District 43 State Representative Christine Chandler. She will share some of her experiences as a first-year legislator and talk about the 30-day session that begins in mid-January.

*Karyl Ann Armbruster*

## **Co-President's Message: Time to Speak Up For (or Against) Plastics and a Less Wasteful Community**

Our County government and many concerned citizens are moving ahead on multiple fronts to make Los Alamos more sustainable in its creation and disposal of waste.

The League's position on the environment reads: "Promote an environment beneficial to life

through the protection and wise management of natural resources in the public interest."

Here's some background for participation in these efforts:

### **Proposed Options for Save As You Throw (SAYT)**

1. No change to current refuse program (\$25 monthly charge to all residents)
2. A bag-based SAYT program (reduced monthly charge on utility bill, with requirement to purchase approved bags for trash disposal)
3. A rollcart-based SAYT program (monthly charge dependent on the cart size selected).

However, at the November 21 meeting, the ESB may vote on tabling the SAYT program proposal for now and instead propose researching a municipal food waste composting program.

*--information courtesy of Sue Barns, Chair, Save-As-You-Throw Research Subcommittee of ESB*

•League and Garden Club member Ann LePage presented a petition to the County Council asking them to ban plastic bags, straws, and Styrofoam.

•The LAHS Eco Club proposed to the Council a 10-cent charge for single-use plastic bags and paper bags.

•The Environmental Sustainability Board (ESB) has been pursuing many approaches to making Los Alamos a Zero Waste community, with a pilot program at the Summer Concert Series this past summer to educate attendees on how to properly dispose

of their trash, recyclables,

and food waste. They are working on actions for schools, restaurants, and organizations (see the article by Jody Benson in this *Update*).

- The ESB will be propose or table a "Save As You Throw" initiative that could reward homeowners who generate less trash, saving themselves and the County money. This proposal will be on the November 21 ESB agenda, and citizens are encouraged to attend and comment on the plan. [For details on the plan, see the box titled "Save As You Throw."]

- The County Council appointed three of its councilors to investigate plastic waste reduction as proposed by Ann LePage and the Eco Club. They are to gather information and present their findings to the Council on December 1, ahead of the December 3 Council meeting. Stay alert for Friendly Reminders of possible meetings of this group with the ESB and/or League members.

All of these environmental concerns seem to be converging from many perspectives. Kroger's (Smith's) plans to eliminate the use of single-use plastic bags—but only by 2025. LA Children's Dentistry is recycling waste such as toothbrushes and eliminating plastic “goody bags”—they are the first business in Los Alamos to partner with Carbonfund.org to become carbon-neutral. The schools are adopting Zero Waste lunches, using reusable trays. Even the already green Los Alamos Coop has changed packaging to avoid plastic. Let's encourage our County government to match the initiatives of many small groups, restaurants, schools, and businesses.

Citizens are encouraged to express their views to the ESB ([ESB\(AT\)lacnm\(DOT\)us](mailto:ESB(AT)lacnm(DOT)us)) and/or to the County Council ([countycouncil\(AT\)lacnm\(DOT\)us](mailto:countycouncil(AT)lacnm(DOT)us))

*Becky Shankland*

## **Advocacy Workshop Focuses on Budget and Revenue**

Each year LWVNM holds an advocacy workshop to give interested residents an opportunity to learn how to lobby legislators effectively. This year's workshop will be at the Roundhouse in Room 322 on Saturday, December 7 from 10 a.m. to noon. The public is invited.

The speakers will be Senator Sander Rue, Republican from Albuquerque and member of the Senate Finance Committee, Representative Christine Chandler, Democrat from Los Alamos and member of the House Taxation and Revenue Committee, and Ruth Hoffman, the retired director of the Lutheran Advocacy Ministry.

The focus will be on the budget and revenue process. Questions about the legislators' positions on specific issues will not be permitted.

## **Welcome, New Members!**

**JoAnn Lysne writes:** I'm a native of Albuquerque but moved to Los Alamos in 2000 after having been away from New Mexico for school and work. I'm an oceanographer, have lived in Japan, dabble in folk art painting, gardens, and live in an ongoing remodeling project with my husband, Pat McCormick, another recent member of the LWVLA.

I've been maintaining The Introvert's Back Row at the LWL presentations for several years, but now I've been drawn towards greater involvement through the use of the word “study” in so many of the League's documents. I'm now the new newsletter editor for the LWVLA and I'm looking forward to becoming more engaged with the group.

**Esta Lee Albright writes:** I've worked on both coasts and the middle of the country doing many things: library work (such as teaching reference librarian skills, running bookmobiles), including Head of Development Division of NM State Library supporting public libraries in cities, towns, pueblos, and reservations.

Because I enjoyed sailing my own boat around Monterey Bay, I became involved in educational activities. I narrated whale watch tours out of

Monterey, taught Elderhostel and Road Scholar groups, and helped to raise orphan sea otters at the Monterey Bay Aquarium.

I moved to Los Alamos in 2006 to be near my daughter, Heather Burke (Enterprise Computing Systems) and granddaughter Kaity Burke, but I soon got hooked on PEEC, giving talks on whales and editing Nature Notes.

I'm interested in scientific and social issues, and I need more facts to make decisions for voting for people and issues.

## ***Observer Corps Reports***

### **County Council**

#### **October 15 Work Session**

All 7 councilors were present for the meeting.

#### *Hotel Conference Center:*

They voted to suspend the council rules for a work session to enable them to conduct a public hearing on LA Ordinance No. 695, an ordinance adopting an economic development project for public support of TNJLA LLC. The project conveys six parcels of county-owned land at Trinity and 20th streets valued at \$1.825 million to the LLC. In return TNJLA is required to construct and operate a 3,500 square foot conference/convention center for a 15-year term, in addition to an extended stay hotel and an 1,800 square foot retail food and beverage facility.

Justifications for the land transfer and county support through the LEDA process was the stated strong desire for a conference center in Los Alamos and the resulting revenue and increased visitation the County would receive through increased lodger's tax revenue from the hotel,

gross receipts tax from operations of the hotel, the retail food/beverage, conference/convention center, property taxes on the parcels, as well as the one-time gross receipts taxes on the construction. The County would also receive a portion of the rental charge for the conference/convention center. The County estimates that it would cost \$400-500 thousand for the local government to operate a comparable conference/convention center.

You may refer to the County website on this project to view statistics. The website information was set up after opposition to the project arose when the transfer was introduced and discussed at meetings held August 6, August 27, and October 1. The councilors voted 5-2 in favor of the transfer of the land. For: Scott, Izraelevitz, Martin, Robinson, Sheehey, Opposed: Maggiore, Ryti.

The project will now go to the Planning and Zoning Commission. One issue that apparently is still not resolved for this project is parking. Mention was made that the parking lot at Ashley Pond will somehow become overflow parking for the project. The Canyon Rim Trail is to be moved away from the canyon rim to the front of the property to accommodate this project.

#### *LANL:*

The other major presentation at the work session was that of Kelly Beierschmitt, Triad National Security's Deputy Director of Operations. It was apparently the same or similar to ones presented previously to potential contractors and to state/pueblo government officials.

The presentation was an overview of the status and needs of the Lab from the Lab's management entity, Triad. Issues that Beierschmitt identified were lack of adequate parking on Lab property,

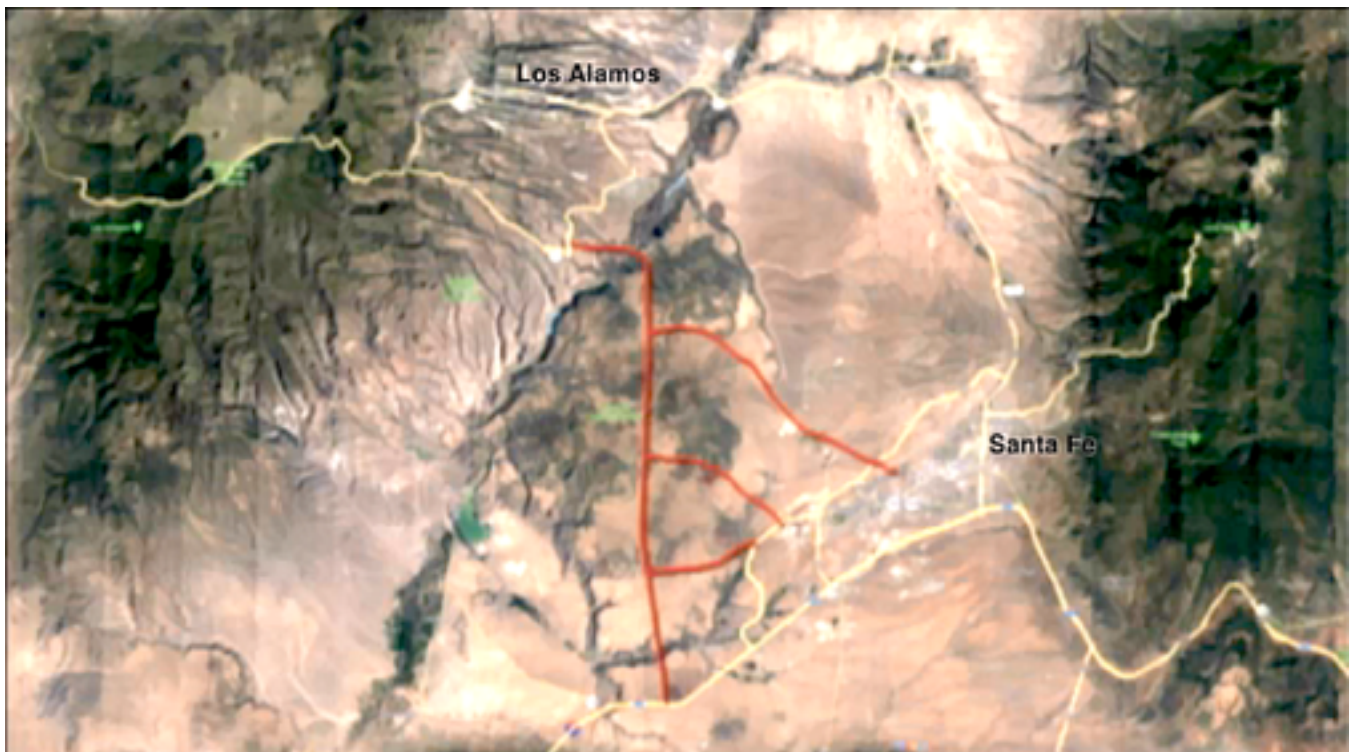
employee problems with commuting time and housing shortages, connectivity and cell phone coverage at the Lab (one fiber cable), and building infrastructure. A status review that Triad conducted looked at needs 30 years out with emphasis on both inside and outside the "fence." Triad envisions an "Innovation Triangle" comprised of Los Alamos, Santa Fe, and Albuquerque with start-up businesses created by the State of New Mexico leveraging Los Alamos and Sandia National Laboratories missions. Additional housing for employees is needed as 1,200 employees were hired in 2018 and it is anticipated that approximately 1,000 new employees will be hired per year for the next four years. Even with about 600 employees retiring a year, too many of those who live in Los Alamos are electing to stay in the county. (He did not indicate what percentage of the retirees live in Los Alamos County.) It is estimated that 60% of the workforce comes from "off the Hill." Most

of the Lab contractor/construction personnel commute from Albuquerque.

A Transportation Connector Road proposed by Triad would cut commute time between the Lab and Albuquerque by 35-45 minutes. This road would connect with I-25 or NM 599 and include a bridge across White Rock Canyon. It would allow employees shorter commute times and access to the larger housing markets in Santa Fe and Albuquerque. Triad recognizes that the State of NM would decide the feasibility and be responsible for the construction of any bridge and highway.

The entire Lab site is being "zoned" and plans created for the various areas. Near and long-term construction needs are being identified, including:

- A new bridge for traffic across Los Alamos Canyon adjacent to the Omega Bridge; the



*Possible new transportation route(s) presented on October 15th are shown in red. Image courtesy of Triad National Security.*

latter would become a pedestrian-bike  
greenway;

- A new location for Lab shipping and receiving;
- The creation of a by-pass route for the general public traveling west from the townsite so that visitors and non-Lab employees could transit without going through the badge checks;
- The necessity to address the brownfield sites within the Lab;
- More intense development of the real estate leased to LACDC.

Questions from councilors elicited the following information:

- Park & Ride expansion at this time is not possible as the ridership is not large enough.
- The maintenance budget for the Lab is \$20 million and the amount of deferred maintenance is very large.
- Recruitment is Beierschmitt's biggest challenge and then finding housing for employees.
- Beierschmitt meets with Los Alamos County manager Harry Burgess about once a month regarding mutual concerns, but County-Lab teams meet more often to make decisions.

Councilor Maggiore questioned why the Council and public had not received this information earlier.

*Addie Jacobson*

## **October 29**

Interesting items from the Consent Agenda:

- The DPU will apply for a matching-fund grant to the NM Environment Department to fund 4 electric vehicle charging stations (at Mesa Library, Golf Course, Municipal Building, and White Rock Visitor Center). Some will be level 2; some will be fast charging. (Level 1 is 120 volts, commonly called “trickle-charge” and used by many people at home. Level 2 is 220 volts. as at PEEC and the Municipal Building. Fast-charge or Level 3 is 440 volts.) Unlike the present charging stations, these will require payment from the user.
- All 7 applicants were approved for The Complete Count Committee for the 2020 Census:

Cathy Hadley: LAMC

Ann LePage: LWV, LA Senior Citizens, First United Methodist Church, etc.

Rachel Kizielewicz, executive director, and Jenny McCumber, board member: LA Community Foundation (they will share one seat)

Kathryn Vigil: UNM-Los Alamos

Jennifer Bartram: chaplain, Ministerial Alliance, Behavioral Health at LANL, etc.

Consetta Goettee: LAPS and other organizations

Joanna Gillespie: LANL

Comments on the Santa Fe National Forest Plan Update by the Los Alamos County Council emphasized concern for fire prevention and fire-fighting (through forest management and access) and the need for cross-boundary management (i.e., by the County and SFNF).

Sean Williams, a local businessman (Automotive Professionals), was appointed to a position on the Planning and Zoning Commission.

Report of Harry Burgess, County Manager:

- Praise for the highly successful National Voter Registration Month and Day, with 314 new registrations processed in September.
- Construction of the Canyon Rim Trail underpass should begin in March 2020.
- With many groups volunteering at the Summer Concert Series, 44% of all waste was diverted from the landfill.

Surprise personnel announcements:

- Joanie Ahlers, Economic Development Administrator, will be leaving.
- Anne Laurent, who formerly held numerous County positions (e.g., Capital Projects Department Director, Community and Economic Development Director) will be returning as Public Works Director.

Council Chair Sara Scott reported on her meeting with Kroger representatives and a developer to discuss the old Smith's building, reminding them that it is a large space with nothing happening. Both citizens and Council are frustrated and it is now a strategic priority of the Council to remedy the situation. Scott believes that Kroger might be willing to sell, and the developer is interested. Talks are ongoing.

*Becky Shankland*

## Board of Public Utilities

Danny Katzman from N3B presented the status of the chromium plume to members of the Board of Public Utilities at the October 16 meeting. According to Katzman, it appears that the interim method of extraction, treatment, and injection is working to reduce the plume footprint. They

continue to investigate the appropriate permanent solution.

BPU members approved two ordinances at the meeting for multi-year water and sewer rate increases. The ordinances will go to the Council to be considered for adoption on November 26. Specifically, water rates will increase 5 percent on November 27, 2019; 4.5 percent on October 1, 2020; and 5 percent on October 21, 2021. Sewer rates will increase 6 percent on November 27, 2019; 3 percent October 1, 2020; and 2 percent October 1, 2021.

A resolution was also approved to allow DPU staff to apply for a grant to install electric vehicle (EV) charging stations in Los Alamos. The grant is administered by the New Mexico Environment Department and funded through the Volkswagen 2015 settlement of the diesel emissions scandal. Proposed EV station locations include Mesa Public Library, the golf course, municipal building, and White Rock Visitor Center. DPU is proposing to install dual-port level 2 chargers at three locations and two DC fast chargers at two locations. The charging rates will be determined by the BPU at a future date.

An offer of a special rebate from the American Public Power Association (APPA) and Nissan is available to all DPU customers. Available until January 2, 2020, customers are eligible for a \$3,500 rebate when purchasing the 2019 LEAF standard edition and \$2,500 when purchasing the ePlus edition. In addition to the public power rebate, customers can also get up to \$7,500 in federal electric vehicle (EV) tax credits. DPU recommends calling Nissan dealers beforehand to check inventory. To claim the rebate, visit the APPA website: [PublicPower.org/EVrebates](http://PublicPower.org/EVrebates). Print the rebate flyer, bring proof of eligible residency, and a current electric bill to the Nissan dealer.

*Julie Williams-Hill*

## October Lunch with a Leader: Shane Woolbright

Shane Woolbright introduced himself by saying that in the 70s he worked as a problem solver for local governments like Los Alamos. The problem in Los Alamos, he said, is that per capita pollution is greater than any other town in New Mexico due to the large number of commuters driving up to work. If he were to come here on a contract, he would recommend that rather than spend \$10 million on our airport over the next ten years, the county should put the money into the airport in Española and use the vacated site for housing. That would net \$700,000 a year in utility sales for the county and eliminate 50 million miles of emissions from driving.

But, he went on to say, the topic for our meeting was global warming. Global warming is increasing the intensity of hurricanes and typhoons, like the one that hit Japan this month. It is also affecting ocean ecology; the increase in carbon dioxide in the atmosphere has led to increased acidity in the oceans, interfering with the development of shells in zooplankton and coral. CO<sub>2</sub> in the atmosphere is also contributing to increased plant growth without a corresponding increase in nutrients.

Woolbright believes our legislature should take steps to address climate warming, but he is very critical of the Energy Transition Act, saying that it was poorly drafted because it permits replacing

coal with natural gas, with no incentives for increasing renewable energy production.

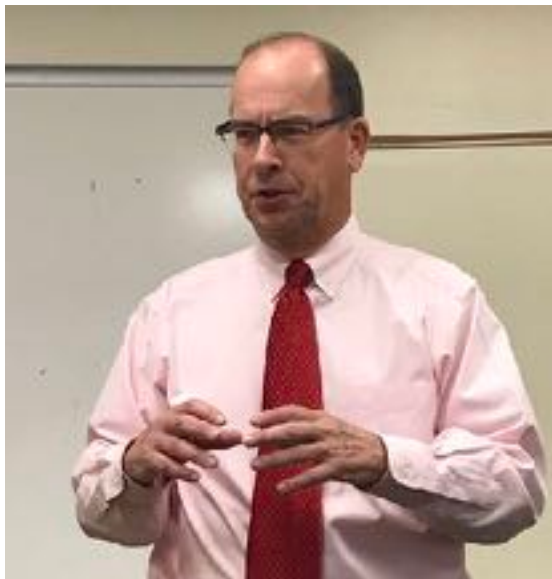
Meanwhile, thirteen bills encouraging solar power died in the 2019 session and New Mexico uses less renewable energy per capita than any other western state. He recommends a \$500 fee per gasoline car to compensate for the pollution and a \$2000 state tax credit for plug-in vehicles. The legislature should also mandate solar panels on all new homes and businesses: one watt of generation for every square foot of building space. They should impose impact fees for building permits.

Woolbright said Los Alamos should join the Southwest Power Pool (SPP), a grid comprising parts of fourteen states from Texas to Minnesota,

which uses 70% wind energy and 12% nuclear. He said that we would save more by joining the SPP than the Energy Imbalance Market, which PNM is considering joining and which is controlled by Nevada, Utah, and Arizona.

The message that all of our power should come from renewable sources is admirable and definitely a goal to pursue, but Woolbright ignored the challenges and some of his arguments were inaccurate. For instance, he said that “there are no reliability issues with wind ...

Outages in America come from power lines going down. Outages are not due to generation issues.” But last summer Texas didn’t have enough supply (electricity) and paid \$9,000 a MWh on the spot market. It WAS a



*Shane Woolbright presents ideas about reducing Los Alamos's carbon footprint at Lunch with a Leader.*

*Photo by Rebecca Shankland.*

generation issue: <https://www.reuters.com/article/texas-power-demand/texas-power-prices-briefly-top-9000-mwh-for-second-time-in-a-week-idUSL2N25B1VV>

*Barbara Calef*

## ***Zero Waste Initiative Hits the Schools, Restaurants, and Events***

The Green Schools Task Force is forging ahead with energetic teacher volunteers organizing Green Teams in every elementary school. The Central Office is offering small stipends. Amazing Chair Susan Hettinga is mentoring the teams. Laurence Peña, the Manager of Los Alamos Schools cafeterias vendor, Chartwells, continues to increase the use of reusables rather than Styrofoam in the cafeterias. LAPS Central Office is supporting the move, and the Piñon PTO raised money to buy reusable cafeteria trays for their school. (The purchase was stalled for a reason we're not clear about.) Because LAPS is self-pay, Chartwells is allowing Peña significant leeway in the food and food-service utensils he's allowed to implement.

Megan Rain's 7th Grade Youth Environment Team is working on two goals: To transform one of the big gravel areas in the quad by the cafeteria into a green space/habitat/outdoor

classroom, and to make a recycle video. They're developing their plans— understanding how to organize their goals, drawing designs, writing scripts, and thinking up funding sources. Rain, a LAMS science teacher, is yet another one of our extraordinary teachers using a science-driven curriculum to teach students how to evaluate and organize.

The Zero Waste Nonprofits Team, with the help of local nonprofits, is creating a handout with the list of all the available help in the community and their schedules of services.

The Zero Waste Restaurants Team met with Los Alamos Chamber of Commerce Director, Ryn Herrmann, to propose a Green Restaurants

Certification. Herrmann suggested many options for grants to help local restaurants move from inexpensive Styrofoam to more expensive non-plastic items, as well as recommending that they ask customers to Bring-Their-Own (mugs, straws, take-home/take-out boxes). The Team will give a presentation to the Chamber Breakfast in February.

Herrmann recommended that when people request an event permit from the County, they be given an option to make it Zero Waste. She also told us that Stacy Baker of the Bradbury Science Museum used a grant from Environmental Stewardship to provide a dishwasher and plates for their events.

*Jody Benson*



*Proposed Logo for Green Restaurant Certificate  
by Katie Myers*

# ***Now Is the Time for Redistricting Reform***

(Op-ed published in the *Los Alamos Daily Post* and the *Los Alamos Monitor* in October.)

Following the 2020 census, New Mexico will be required to readjust its electoral districts to reflect changes in the distribution of the population. Now is the time for New Mexico to take steps to join the growing number of states that have created objective, fair, and transparent systems for redistricting.

In New Mexico, the legislature determines the congressional and state legislative districts, as well as the Public Education Commission and Public Regulation Commission districts. Our state has a long history of having the legislature's redistricting maps litigated and decided by the courts.

After the previous census, in 2010, the redistricting process failed, as it had many times before. Numerous lawsuits, appeals and counter-appeals resulted. Finally, in February 2012, a Federal District Court ruled that the mapping decisions made by the N.M. Supreme Court would stand. The redistricting budget for the 2011 cycle was \$3 million, but the total cost was \$8 million and court-drawn maps were not finally implemented until a week before the deadline for candidates to file for the 2012 elections.

How can we prevent a repeat in 2021? Ideally, by now we would have amended our state constitution, but our legislature has not been willing to put an independent redistricting commission amendment on the ballot. Now it's too late to create a commission before the next redistricting cycle.

So, what can be done? We need to convince our legislators that they must pass legislation to make the process fairer and more transparent prior to 2021. The bulk of the decision-making and debate over redistricting happens in Democratic and Republican caucus meetings, closed-door gatherings during the legislative session. Unlike other states, New Mexico does not prohibit favoring an incumbent or party; New Mexico's process effectively allows incumbents to tailor their districts to suit their political base.

As a guide to fair redistricting, the Brennan Center for Justice, a non-partisan law and public policy institute, has created a set of rules to ensure that district maps reflect community input and preferences, protect minority communities, and are free from political manipulation. <https://www.brennancenter.org/our-work/policy-solutions/creating-strong-rules-drawing-maps>

Fourteen states already have independent legislative redistricting commissions. At least six other states are considering adopting some type of redistricting reform prior to 2021. Please join me in telling our legislators that we want the process in 2021 to be objective, fair, and open.

*Barbara Calef*

### Did You Know?

The League of Women Voters will celebrate the 100th anniversary of its founding on February 14, 2020 -- yes, Valentine's Day!

Once the 19th Amendment to the Constitution was passed by Congress, the National American Woman Suffrage Association transformed itself into the League of Women Voters to mobilize ratification efforts across the states and to educate women how to use the vote effectively. Since then, the League has worked diligently for the civic rights of individuals and groups denied the vote and equal status under the law, not only in the United States but worldwide.

On August 26, Women's Equality Day will commemorate the official 100th anniversary of the ratification of the 19th Amendment.



*Vicky the Voter encourages Los Alamosans to vote for the School Bond. Photo by Barbara Calef*

## LWVLA Board of Directors 2019-2020

### Officers:

- Co-presidents: Barbara Calef and Rebecca Shankland
- 1st Vice-President: Ellen Mills
- 2nd Vice-President: Leslie Wallstrom
- Treasurer: Kathleen Taylor
- Secretary: Rebecca Chaiken

### Directors:

- Reservations: Amy Birnbaum
- Lunch with a Leader: Karyl Ann Armbruster
- Voter Services: Lynn Jones
- Board of Public Utilities Observer: Julie Williams-Hill
- Publicity: Jody Benson

- Director at Large: Akkana Peck
- Fundraising: Rosmarie Frederickson

### Off-board Directors:

- Arrangements: Wendy Swanson
- Membership: Rebecca Shankland
- Webmaster: Julie Williams-Hill
- County Council Observer: LWVLA Board
- Newsletter Editor: JoAnn Lysne
- Nominating Committee Chair: Ellen Mills
- 2nd Nominating Committee Member: *not filled*

If you would like to join the League, fill out and submit the membership form on page 12.



## LEAGUE OF WOMEN VOTERS OF LOS ALAMOS MEMBERSHIP FORM

Mail to: LWV Los Alamos  
P.O. Box 158  
Los Alamos, NM 87544

Name: \_\_\_\_\_ Date: \_\_\_\_\_

Address: \_\_\_\_\_  
\_\_\_\_\_

Phone(s): \_\_\_\_\_ E-mail \_\_\_\_\_

\_\_\_\_\_ Check here to receive our local newsletter Update as an electronic file, saving us postage

\_\_\_\_\_ OR Check here if you prefer the newsletter mailed in hard copy.

\_\_\_\_\_ Check here to receive occasional friendly reminders of upcoming events by e-mail.

**Membership Categories: all checks for memberships and contributions should be payable to LWV-Los Alamos and all are now tax-deductible. Let us know if you'd like a tax-deductible statement.**

\_\_\_\_\_ Single membership: \$45

\_\_\_\_\_ Household membership (two+ people at the same address): \$65

\_\_\_\_\_ Single Sustaining membership: \$75

\_\_\_\_\_ Household Sustaining membership (two+ people at the same address): \$95

\_\_\_\_\_ Student membership: \$0 (must be 16 or over)

\_\_\_\_\_ Contribution to support League work: \$ \_\_\_\_\_

### **Interests and Ways to Help the League** (check as many as apply)

#### Topics of Interest

- \_\_\_\_\_ Affordable Housing
- \_\_\_\_\_ Local Government
- \_\_\_\_\_ Education
- \_\_\_\_\_ Elections, Voting Rights
- \_\_\_\_\_ Water Issues
- \_\_\_\_\_ Land Use
- \_\_\_\_\_ Health Care
- \_\_\_\_\_ Money in Politics
- \_\_\_\_\_ Sustainability
- \_\_\_\_\_ Living Wage
- \_\_\_\_\_ Public Transportation
- \_\_\_\_\_ Environment
- \_\_\_\_\_ Other topics (please suggest):  
\_\_\_\_\_

#### Ways to Help with League Activities

- \_\_\_\_\_ Set up Refreshments at Forums
- \_\_\_\_\_ Observer Corps (County Council, DPU, etc.)
- \_\_\_\_\_ Nominating Committee
- \_\_\_\_\_ Voter Guides Committee
- \_\_\_\_\_ Voter Registration
- \_\_\_\_\_ Publicity
- \_\_\_\_\_ Website, Social Media
- \_\_\_\_\_ Newsletter
- \_\_\_\_\_ Membership
- \_\_\_\_\_ Fund-raising
- \_\_\_\_\_ Budget Committee for LWV
- \_\_\_\_\_ Lunch with a Leader (assistance)
- \_\_\_\_\_ Fund-raising Committee for LWV
- \_\_\_\_\_ Participate in board meetings or join board

***The League of Women Voters, a nonpartisan political organization, encourages informed and active participation in government, works to increase understanding of major public policy issues, and influences public policy through education and advocacy***

<i>In This Issue</i>	<i>Page</i>
Calendar	1
Lunch with a Leader: Liz Martineau and Leslie Linke	1
Co-President's Message: Time to Speak Up For (or Against) Plastics and a Less Wasteful Community	2
Advocacy Workshop Focuses on Budget and Revenue	3
Welcome, New Members!	3
Observer Corps Reports	4
County Council	4
Board of Public Utilities	7
October Lunch with a Leader: Shane Woolbright	8
Zero Waste Initiative Hits the Schools, Restaurants, and Events	9
Now Is the Time for Redistricting Reform	10
LWVLA Board of Directors 2019-2020	11