

**FROM THE CO-PRESIDENT'S DESK**



We'd like to welcome everyone back from summer and also welcome our new Board of Directors for the coming year 2020-2021! We have probably the most diverse board the LWVLA has had in years. We are looking forward to the year ahead and have a lot of work to do as we face one of the most unique election cycles yet.

We are gearing up for our upcoming November elections and could use your help! We have multiple candidate forums coming up at the end of September and early October. Along with our Speakers Training to learn about the Pros and Cons of all state ballot measures on September 26, please see page 7 for more details.

For those of you new to the League, we are now offering a mentor program with one of our long time League volunteers to help you get your questions answered and point you in the right direction. Please reach out to the office for a description of the program or you can reach out to Thanayi Lindsey or Chance Kavar at [membership@lwvlosangeles.org](mailto:membership@lwvlosangeles.org) for more information.

Have a wonderful start to fall and stay safe!

In League,

**Crissi Avila**, Co-President

**Mona Field**, Co-President

**September - October 2020**

*In this newsletter...*

- 1 Co-President's Message
- 2 Civic Society
- 2 Proposition 15: Schools and Communities First
- 3 Ballot Measures Pros & Cons
- 4 Council District 10 Run Off Candidate Forum
- 7 Fall League Day
- 8 Monthly Highlights

**HAVE YOU RENEWED  
YOUR MEMBERSHIP?**

Memberships expired June 30  
Email [info@lwvlosangeles.org](mailto:info@lwvlosangeles.org)  
Or call us to inquire whether  
your membership is current.

## League of Women Voters of Los Angeles

3303 Wilshire Boulevard  
Suite 1200  
Los Angeles, CA 90010  
T 213-368-1616  
[www.LWVlosangeles.org](http://www.LWVlosangeles.org)

### VOTER STAFF

Marilu Guevara  
Editor

Elizabeth Valdivia  
Production

Amy Dunkleberger  
Copy Editor

Submit articles to:  
[info@LWVlosangeles.org](mailto:info@LWVlosangeles.org)

### LOCAL UNITS

Valley

## CIVIC SOCIETY

We just had our first post-COVID-19 Civic Society Salon in conversation with Los Angeles County Registrar Clerk, Dean Logan, who enlightened us on how the County is preparing to successfully manage the upcoming November 3 election.

Civic Society support is more critical than ever as our usual funding sources are unavailable. Our mission, however, is also more critical than ever as we are planning to meet the needs of the public in this big election year.

Learn more, and join us on the evening of October 13, when our guest will be California State Senator Bob Hertzberg. Senator Hertzberg will tell us what to expect when the state legislature reconvenes following the election.

For more information please contact Executive Director Marilu Guevara, [ed@LWVlosangeles.org](mailto:ed@LWVlosangeles.org) or 213-368-1616. Thank you for your support.

**Carryl Carter & Renee Chanon**

Co-chairs, Civic Society

## PROPOSITION 15: SCHOOLS & COMMUNITIES FIRST

Two of the many things we're learning from the COVID-19 pandemic are the lack of preparedness for disasters and the lack of investment in people and resources, a pattern that ripples through so much of public policy.

For now we have to rely on the bravery of professionals on the front lines — doctors, nurses, technicians, emergency responders — and the crisis management skills of our local officials. But we can do more to prepare for the future.

The Schools and Communities First initiative, which will appear on the November, 2020 ballot, will increase the available funding for local, critical services, including public health, emergency response and education that keep all of us safe and healthy. The initiative closes corporate tax loopholes that have taken revenue away from our local communities and schools.

As we continue praising those on the front lines we also need to support solutions that will help them do their jobs more effectively. The Schools and Communities First initiative is a solution we all need to get behind.



## ***Contributions Since the last VOTER***

### ***Contributions***

Keri Dearborn  
Elizabeth Fohl  
Sandy Green  
Margaret Hardin  
4Site Holdings  
Jennifer Kawar  
Mary Kawar  
Lynne Mannino  
Benjamin Moore  
Lynn Ostrick  
Martha R. Sklar  
Euge Sherri Sorbel  
Joe Viola  
Alexandra Tangelos  
Susan Saltus  
Rita Zwern

### ***New Members***

Jane Cook  
Keri Dearborn  
Ashley Frohlich Brooks  
Anne Hager  
Joseph Hartley  
Ann Holmlund  
Mary James  
Christina Karlsson  
Aiza Keesey  
Julianne Kravitz  
Margaret H McCauley  
Jacquelyn Myers  
Rachel Plecas  
Diane Robertson  
Miranda Rubin  
Judith Sack  
Jami Simon  
Michelle Stevens  
Janey Sweet  
Cynthia Tiedeman  
Patricia A. Tierce  
Barbara Watkins

### ***Sustaining Contributions***

Benjamin Moore



## **BALLOT MEASURES PROS & CONS** **Virtual Talk Hosted by Skirball Cultural Center**

Get ready to vote! Ranging from the rights of gig workers to reforms on our property tax system, the results of the upcoming election will have widespread impact on Californians. Grab your sample ballot and join us for a nonpartisan overview of the most pressing state ballot measures up for a vote this November 3. Led by **Mona Field**, Co-President of the League of Women Voters of Los Angeles, this online program takes a look at the pros and cons of each measure to help you make informed decisions.

### **Get ready for the election**

**Make sure you're registered!** LA County residents, visit [lavote.net](https://lavote.net) to register to vote or confirm your registration status. While you're there, learn about the various ways you can vote in the upcoming election—including several options for safely casting Vote by Mail ballots.

**Get informed!** Visit [votersedge.org](https://votersedge.org), a one-stop shop for election-related information brought to you by the League of Women Voters of California.

**Cast your ballot!** For those planning to submit a Vote by Mail ballot via USPS, voting early can help ensure your ballot is counted. You can sign up to track your Vote by Mail ballot at [california.ballottrax.net](https://california.ballottrax.net)

**Enjoy from home!** In support of emergency efforts to slow and contain the spread of COVID-19, this program will be offered virtually. Ticketholders will be contacted by the Skirball with details.

[Reserve Now](#) FREE online program - Reservations required

2020 LOS ANGELES CITY COUNCIL DISTRICT 10

# RUN-OFF CANDIDATES FORUM

Get informed before voting  
in the General Election

## MODERATORS



**Dr. Jody Armour**  
Professor of Law, USC



**Jacqueline García**  
Reporter, La Opinión



**Mark Ridley-Thomas**

LA County Supervisor,  
2nd District



**Grace Yoo**

Community Leader/  
Attorney

**VIRTUAL FORUM**  
via  
**ZOOM**

**SATURDAY**  
**SEPTEMBER 19, 2020**  
**12-2PM**

**RSVP at:**  
**[cd10-runoff.eventbrite.com](https://cd10-runoff.eventbrite.com)**

ZOOM login information will be provided by email upon receipt of your RSVP.  
Please be sure to use a valid email address.







LWWlosangeles.org  
membership@lwwlosangeles.org  
(213) 368-1616

# Create Impact: Be A League Mentor

The objectives of the mentor program are to foster a sense of community and connectedness to the newest members of our League. The program creates a more “welcoming” League, by providing the means to engage both new and existing (seasoned) members.

The Mentor is here to guide the new member through the first league year.

## The Mentor Experience

- We ask seasoned members (but no reluctant mentors) to be mentors
- New members who want to participate are paired with a mentor
- Mentor and member meet virtually
- Engagement around League mission, impact, member experience and volunteer opportunities
- Invite and accompany new member to orientations, holiday social, membership meetings and other social events
- Help to connect members to issues, committees and programs

## Mentor Support

There are follow-up, resources and quarterly meetings to check-in with mentors.





LWVlosangeles.org  
membership@lwvlosangeles.org  
(213) 368-1616

# New Member Mentor Program

The goal of the mentor program is to foster a sense of community and connectedness between the League and its newest members. The Mentor is there to guide the new member through their first League year.

## The Mentee Experience

- All mentors are seasoned members who have a deep understanding of League history and programs
- Meetings and engagement take place online or over the phone due to COVID-19
- Mentors introduce new members to our mission and volunteer opportunities, and answer questions along the way
- Mentors invite new members to orientations, holiday social, membership meetings and other social events
- New members are connected to issues, committees and programs by an experienced member

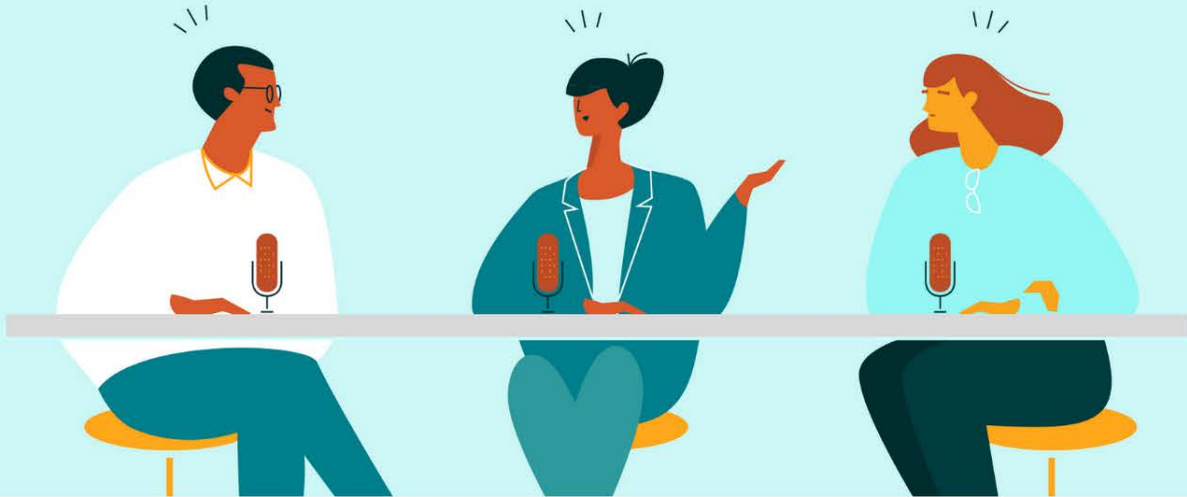
## Be Mentored

Mentors and new members are paired on an on-going basis throughout the year based on availability.

**Let us know about your interest in the New Member Interest Survey or contact [membership@lwvlosangeles.org](mailto:membership@lwvlosangeles.org) for more information.**



LEAGUE OF WOMEN VOTERS OF LOS ANGELES COUNTY



# FALL LEAGUE DAY

**Be an accurate source of information in a fake news world: Ballot Briefing November 2020**

The first segment will be a non-biased, non-partisan in-depth analysis of 16 ballot measures, the key provisions, funding sources and what a yes vote and a no vote means.

The second segment will be a call to action training on 6 ballot measures that the League will be taking a position on whether for, against or neutral. Both segments are essential training for League members and the concerned public. Join us!

**SATURDAY, SEPTEMBER 26**  
**9:30 A.M. TO 2:00 P.M.**  
**Zoom Meeting | \$5 Registration**

9:30 A.M.	Networking
10:00 A.M.	Ballot Briefing
12:30 P.M.	Lunch Break
1:00 P.M.	Ballot Recommendations

**REGISTER AT**  
**FallLeagueDay2020.Eventbrite.com**

*There will be two zoom links sent out.  
One for the Pros and Cons and one for the Action meeting.*



# MONTHLY HIGHLIGHTS

*League of Women Voters of Los Angeles*

September 2020 - Volume 12, Issue 1

**Tuesday, September 8 | 6:30 p.m. - 7:30 p.m.**

## **Communications Committee Meeting**

The next two months are the most important for communicating events and voter information to League members and the public. If you like developing creative ideas for getting the word out; if you like sending emails and texts; if you like posting on Facebook or Instagram, then the Communications Committee is for you. You can offer as much time as you want.

Send an email to Penny Sommers at [aurice.sommers@yahoo.com](mailto:aurice.sommers@yahoo.com)

or call 323-270-2420 to receive link to the meeting.

**Wednesday, September 9 | 6:30 p.m. - 8:00 p.m.**

## **League Book Club**

This month's selection for discussion is "The Library Book" by Susan Orlean. If you are interested in joining us, please send an email to our Zoom maven, Ann Rushton at [annrushton@lwvla@gmail.com](mailto:annrushton@lwvla@gmail.com) so you can be added to our group and get the Zoom link. Stay hydrated, stay safe! Sue Strickland, chair [johnandsioux@socal.rr.com](mailto:johnandsioux@socal.rr.com)

**Monday, September 14 | 12:00 p.m. - 1:30 p.m.**

## **Criminal Justice Committee**

Join us for a lively and important discussion about ways to improve equity and community safety.

Agenda items include:

- Closing of state juvenile detention facilities - What is L.A. County's plan?
- Preparing for the District Attorney candidate forum in October
- Impact of police unions on criminal justice reform
- Policing reform

Email [carolina.goodman@sbcglobal.net](mailto:carolina.goodman@sbcglobal.net) for the zoom link.

**Thursday, September 17 | 12:30 p.m. - 2:30 p.m.**

## **Valley Unit Meeting**

Join us for this exciting and informative meeting with LA County Clerk Office Staff Dean Logan who will go over the November election, voting process, and answer our questions! To join this meeting please contact, Fran Lapides [fran@lwvlosangeles.org](mailto:fran@lwvlosangeles.org)

## **Rapid Response Team**

Ever read an article or an Op-Ed in the newspaper that made you shout out loud? Then you are the right person for our Rapid Response Team. If the League needs a letter to the editor, we will contact you to see if you can craft an effective letter within a day. Often there are League talking points that will provide guidance. The letter goes to the Presidents and Marilu Guevara and then off to the newspaper. If you want to be part of the Rapid Response Team, send an email to Penny Sommers at [aurice.sommers@yahoo.com](mailto:aurice.sommers@yahoo.com)

## **League Sites You Need to Know!**

LWV Los Angeles: [www.lwvlosangeles.org](http://www.lwvlosangeles.org)

LWV/LACounty: <http://lacilo.ca.LWVnet.org/index.html>

LWV California: [www.cavotes.org](http://www.cavotes.org)

LWVUS: [www.LWV.org](http://www.LWV.org)

LWVLA Facebook: [www.facebook.com/LWVlosangeles](https://www.facebook.com/LWVlosangeles)

LWVLA Twitter: [@LWVlosangeles](https://twitter.com/LWVlosangeles)

LWVLA Instagram: [LWVLosAngeles](https://www.instagram.com/LWVLosAngeles)