

# LWV LEAGUE OF WOMEN VOTERS® OF SOLANO COUNTY

**October 2020** <https://my.lwv.org/california/solano-county>

The League of Women Voters is a nonpartisan political organization which neither supports nor opposes candidates or political parties. We encourage informed and active participation in government, work to increase understanding of major public policy issues and influence public policy through education and action.



## LWV SOLANO COUNTY CALENDAR

Please watch for updates to these events, as things change from time to time. Meetings and updates are posted on our website [LWVSC Calendar](#).

**Candidate Forums:** See details and the list of forums below on page 3. If you miss a forum, you can watch a full recording of the forum on the LWV Solano YouTube channel <https://www.youtube.com/channel/UCKsWzzfO8WOe8GB1HCn6FvQ>.

**Oct. 5th, Monday: Early voting begins.** Mail in your ballot or drop off at a certified Ballot Collection Center,

<https://www.solanocounty.com/civicax/filebank/blobdload.aspx?BlobID=31737>.

**Great Decisions Extension Group** Please email [LWVSolano@gmail.com](mailto:LWVSolano@gmail.com) for Zoom information. Monday, October 5<sup>th</sup> at 7 pm

**October 19, Monday: Last Day to Register to Vote By Mail or Online.** You can still register to vote up to and including on Election Day at the Solano County Registrar of Voters or at a polling station.

**Nov. 3<sup>rd</sup>, Tuesday:**



Check our website for the latest event news: <https://my.lwv.org/california/solano-county>

**Committee meetings** are being held via Zoom at this time. Meetings and updates are posted on our website [LWVSC Calendar](#).

## A few words from the LWVSC President:

Hello Leaguers,

I hope this finds you all well, I know you are busy. Your League is working hard too, on offering as many forums as we can handle, filling in all the blanks on *Voter's Edge*, and getting the word out about registering using *Map the Vote* to identify unregistered households and send them postcards to help them register, and providing *Election Resource Central* on our site.



We've been working especially hard to provide Candidate Forums throughout our county. It's been taking many of our volunteers and resources to plan and hold the 7 Candidate Forums across Solano County. The new online format via our YouTube channel has required many hours and volunteers and a good deal of head scratching to plan out the logistics, build new technology skills, and then host the forums. Luckily, if folks miss a live forum, they will still be able to watch a full recording of the forum on the [LWV Solano YouTube channel](#); check for details in the Calendar section of this newsletter.

By the time we are done with the candidate forums, we should have a powerful new skill-set to host future forums for our members and communities.

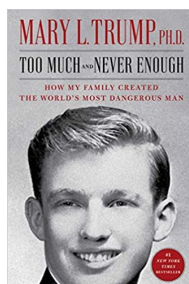
Remember, Democracy is not a spectator sport!

Niles Medders  
President  
League of Women Voters Solano County

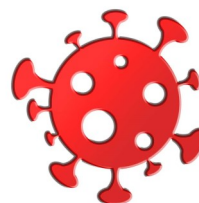
## Great Decisions Extension

The Great Decisions Extension group continues to meet first Mondays at 7:00 PM via Zoom. Our discussions have been focused on current events. Our next meeting is October 5, 2020. Everyone is welcome. Come and bring your ideas.

We have been discussing the upcoming election, the pandemic, Mary Trump's book, and issues of Black Lives Matter. It is fun to see old friends even if it is only on Zoom. Come and share with us anything you'd like to talk about. If anyone one would like to join our discussion or just come and listen in and add your thoughts please send an email request to [LWVSolano@gmail.com](mailto:LWVSolano@gmail.com).



**BLACK  
LIVES  
MATTER**



**COVID-19**  
Coronavirus

## PROGRAM AND PLANNING COMMITTEE



### Volunteer Sign-Up Form

We have had a 25% response to the Volunteer Sign-Up form we mailed to members in August – but the need for active volunteers is great and we need more! If you haven't already returned your form, please fill it out and return it or you can also fill out our easy online Volunteer Interest Form at <https://my.lwv.org/california/solano-county/volunteer-interest-form>. Our committees will follow up with volunteers.

## Candidate Forums



PPE is working hand-in-hand with Voter Service and our Executive team to provide candidate forums for our county. Please check the calendar above and our website at <https://my.lwv.org/california/solano-county/event/dates-lwv-solano-non-partisan-live-stream-candidate-forums> to find out the latest information about upcoming Candidate Forums and about those that were held in September.

If you miss a Candidates Forum, never fear! All forums are open to the public and available via live stream on the [League of Women Voters Solano County YouTube channel](https://www.youtube.com/channel/UCKsWzzfO8WOe8GB1HCn6FvQ) at <https://www.youtube.com/channel/UCKsWzzfO8WOe8GB1HCn6FvQ>.

We are pleased that we have been able to bring you so many forums this season. We have been busy. Now it's your turn. Share the forum link to your friends so that they can be informed voters.

After the election, the League will be taking stock of how to move forward in these times. No matter who wins the election, millions of people will be disappointed and questioning the validity of the elections. It is important that as League members, we work to educate our community on how elections work, and how to safe-guard them.

We are looking for ideas from within our membership for how we can be a positive voice during and after the election. Please send ideas to [juliehartford@gmail.com](mailto:juliehartford@gmail.com).

Several forums were held in September, below are the dates for October forums, additions and changes can be found on our [website](#):

**October 1<sup>st</sup>, Thursday, 5:30 pm Vacaville, City Council, District 1**

*Co-Sponsor Solano Valley Alumnae Chapter of Delta Sigma Theta Sorority, Inc.*

**October 3<sup>rd</sup>, Saturday, 10am-Noon Vallejo Mayoral Candidates**

*Co-Sponsors National Coalition of 100 Black Women, Oakland/Bay Area Chapter*

**October 8, Thursday, 6-8 pm. Benicia Mayoral and City Council Candidate Forum.**

*Co-Sponsors Benicia-Vallejo Branch AAUW and Carquinez Village*

**October 10<sup>th</sup>, Saturday, 10am-Noon Vallejo City Council Candidates, Districts 1, 3, & 6**

## MEMBERSHIP COMMITTEE

Membership Committee members continue our work of forging new relationships with other organizations with compatible and complimentary missions. We open doors for our League and our Committees! We have made significant progress engaging communities throughout Solano County and raising awareness of the League and what we have to offer.

As always, the Membership team works closely with other LWVSC committees, for example:



**Distribution of *Easy Voters Guides*** (10 bundles and 50 booklets in each bundle) is working well and to date:

Churches: three bundles two bundles to Pastor Johnson Vallejo and one bundle to Pastor Green Benicia

Food Banks: Four bundles 2sites in Vacaville and 1 site in Fairfield

Senior Centers: One bundle 10 at five sites

Niles: Two bundles for organizations serving Benicia and Vallejo

June: 10 booklets for Spanish Seniors

**Follow Up on Volunteer Interest Form Responses** - getting volunteer information to committees of interest which include new volunteers: 2 Communications, 5 Membership, 12 Voter Services, 4 Events, 1 Fundraising.

**If you know of an organization we should reach out to, please email us at [LWVSolano@gmail.com](mailto:LWVSolano@gmail.com)**

### 2020 Membership Committee Priorities.

Develop new and deeper influencer relationships with values-based community organizations with the goal of building strong mutual community engagement in government/elections.

Build awareness and recognition of LWV as a resource for unbiased information.

Keep Diversity, Equity, and Inclusion at the core of our outreach.

Outreach to youth to build future League leaders.

Leverage, support and facilitate activities by other committees.

## VOTER SERVICES COMMITTEE

### Map the Vote - Encouraging People to Register to Vote

Carole Paterson reported the Map the Vote effort (to encourage unregistered voters to register to vote prior to the election) has sent over 700 postcards so far. For anyone interested in helping this effort, the postcard completion process has been greatly simplified so there is minimal handwriting. [MaptheVote.org](http://MaptheVote.org) can provide addresses of unregistered home occupants. Cards can be obtained through Carole Paterson along with a roll of stamps and scripted labels. Just address the card, affix the stamp and the scripted label on the back, write a salutation and sign as a volunteer with your first name only, and mail, keeping a running list of addresses contacted. [Donations](#) for the purchase of supplies are welcomed. Interested? Please contact Carole at [vjocarole@yahoo.com](mailto:vjocarole@yahoo.com)



### Slide Show for Voter Preregistration of High School Students

Gayle Vaughn is completing the preparation of a slide show presentation for high school students and their teachers to explain and encourage voter pre-registration. Students can pre-register to vote at age 16 and upon their 18th birthday will automatically be registered. This is part of an effort to encourage excitement and interest by young people in becoming active and proud participants in our democracy with the hope of establishing a lifelong commitment to voting.

### "Vote" Yard Signs

Gayle Vaughn and Becky Cecena are distributing "Vote" yard signs to those who would like them, with a \$5 donation requested to cover costs. To get yours before they are gone, please contact:

Benicia: [savagekath@comcast.net](mailto:savagekath@comcast.net)

Fairfield: [vjocarole@yahoo.com](mailto:vjocarole@yahoo.com) or [bking2520@comcast.net](mailto:bking2520@comcast.net).

Vacaville: [redmustang502001@aol.com](mailto:redmustang502001@aol.com)

Vallejo: [nilesmedders@gmail.com](mailto:nilesmedders@gmail.com)



### National Voter Registration Day

National Voter Registration Day was Sept. 22<sup>nd</sup> and was used as a stimulus to get people to register early to vote. Legions of Solano County League members took to the internet to distribute online flyers with a QR code to their own contacts, and to print and display in their communities. This was a new virtual experiment that seemed to work well for us. If you have still not registered to vote, it's not too late. Go to [registertovote.ca.gov](http://registertovote.ca.gov) or click on this QR code with your phone.

## VOTER SERVICES COMMITTEE continued

### Reaching Out to Minority Communities

In concert with Voter Service, Margo McGlone and Alice Wilson Fried from the Membership Committee are contacting Solano County churches that serve minority neighborhoods to assist pastors and their congregations in obtaining voter registration information as well as information on California propositions on the ballot.



### Reaching Out to the Elderly, Homeless and Poor Communities

Maryanne Perlmutter and Margo McGlone are contacting Senior Centers, Solano County Food Pantries and Meals on Wheels to offer the state Voter Guides or a simplified version for distribution.

### More Getting Out the Vote

League members will be texting young voters on Sunday, Nov. 1<sup>st</sup> between 3-6pm to remind them to vote. We hope to contact over 1000 prospective voters. If you would like to participate (from home), contact [vonwingayle@gmail.com](mailto:vonwingayle@gmail.com) and you will be provided with a list of phone numbers.

### Informing and Engaging Voters:

**Voter's Edge:** Voter's Edge is a State League website where the general voting public can go to find nonpartisan information about the candidates and measures for office.

The site has been up since Sept 1, with dedicated Solano County League volunteers collecting and entering data from over 120 candidates in 70 different contests. New material will continue to be added until Oct. 31 and the site will remain active until all contests have a declared winner. Since in person forums and meet and greets aren't happening this election, both the public and candidates are very interested in using Voter's Edge.



Just go to [votersedge.org/ca](http://votersedge.org/ca) and enter your street address and zip code for your specific ballot to pop up. Then click on the candidates to see information that they have provided about themselves.

**Easy Voter Guides:** The Easy Voter Guide is a hardcopy multipage guide to measures, tax information and basic voter instructions that is produced by collaboration of the League of Women Voters® of California Education Fund and the California State Library.

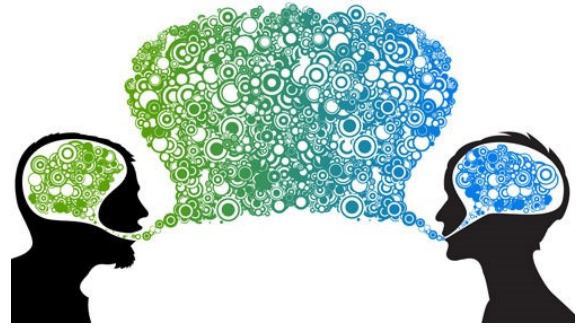
The Membership Committee is working in concert with Voter Service to distribute them to our community. Find out details in the Membership section of this newsletter. If you need some for yourself or a group, please contact [nilesmedders@gmail.com](mailto:nilesmedders@gmail.com)

## COMMUNICATIONS COMMITTEE

Check Out LWVSC Election Resource Central to provide you with quick links to State, Local, and League resources:

<https://my.lwv.org/california/solano-county/article/2020-election-resource-central>

If you know of a resource we should add, please email the information to: [LWVSolano@gmail.com](mailto:LWVSolano@gmail.com).



**Publicity** We send out monthly press releases and twice monthly updates to our extensive media list. If you have suggestions for items to include in our press releases and / or posts for our social media pages, please send them to [LWVSolano@gmail.com](mailto:LWVSolano@gmail.com).

**Posters and Flyers** Our team has been providing Voter Service and Membership with flyers to get the word out about our Candidate Forums.

**Everything Online** Among our responsibilities, we also manage our LWVSC website and social media accounts and send out “e-blast” alerts via MailChimp. We welcome your feedback and suggestions.

## GET INVOLVED

**Time on your hands? Get involved while staying at home!** Important Volunteer activities are available to suit your skills and time – from just an hour or two a month or more.

Find out details on all the options on our website: <https://my.lwv.org/california/solano-county/donate>

Fill out our easy online Volunteer Interest Form at <https://my.lwv.org/california/solano-county/volunteer-interest-form>. We have a lot of election-related opportunities happening now.

**Looking for a Special Volunteer Referral Someone!** Now that we are developing a great list of volunteers, all logged in a Volunteer spreadsheet, we are looking for someone to help with an **important new job, Volunteer Reference Desk**. This person will field Committee Chair questions about who might be interested in helping with specific tasks. The **Volunteer Reference** person would only be responsible for getting contact information to Committee Chairs, and would NOT be responsible for contacting or following up with volunteers. Only requirement is some basic familiarity with Excel; we will train! If you are interested, please email <mailto:mLWVSolano@gmail.com>.



We know that some members are not able to volunteer at this time but please know that your membership and support is very important to our League.



## OFFICERS, BOARD OF DIRECTORS & COMMITTEES

To contact our Officers, Board, and Committee Coordinators please email: [LWVSolano@gmail.com](mailto:LWVSolano@gmail.com).

### Officers

President, Niles Medders

Vice President, Julie Hartford, and PP&E Co-Chair

Treasurer, Judy Potter

Secretary, Denise Crider

### Board Directors

Sandy Coury, Communications Chair

Alice Fried, High School Civics Competition

Margo McGlone, Membership Chair and Bay Area League Board

Carole Paterson, Voter Service

Craig Paterson, PPE Co-Chair

Marianne Perlmutter, PPE

### Deputy Chairs and Area Coordinators

Program Planning & Events (PPE) Co-Chairs

Julie Hartford

Craig Paterson

Voter Service

Maryanne Perlmutter, Administrator

Voter Service Area Coordinators

Gayle Smith Vaughan: Benicia/Vallejo

Carole Paterson: Fairfield

Barbara King: Fairfield

Becky Cecena: Vacaville

Mona Whitney: Rio Vista

### Voter Newsletter

Leslie Lessenger, Sandy Coury, Niles Medders

### NEWSLETTER SUBMISSIONS GUIDELINES

Due by the 17th of the month

Email submissions to Sandy Coury, [sandycoury@gmail.com](mailto:sandycoury@gmail.com)

**Content must be League Business Only**

Include What, Where, When, and Why in first paragraph.

Length should be 200 words or less.

Please use WORD; Calibri 12 pt. is preferred.

Simple formatting only.

**League of Women Voters Solano County:** <https://my.lwv.org/california/solano-county>

**Facebook** [@LWVSolano](#)

**Twitter** [@LWVSolanoCounty](#)

**Instagram** [@LWVSolanoCounty](#)

**YouTube** [Subscribe to our LWV Solano County Channel](#)