

## Spring 2021

### *Mark Your Calendar!*



#### **MAY**

**May 11:** LWV-Woodland Board Meeting, 1:30pm (virtual)

**May 15:** Annual Meeting Packet distributed by special edition of THE VOTER

**May 17 – 23:** Woodland Food Week

Downtown restaurants participating and celebrating local produce, crops and products. Supported by Celebrate Woodland 150 in honor of Woodland's 150th birthday

**May 19:** DEMOCRACY WORKing Part 3, 12:00pm (virtual). Meet Woodland's newest City Council members.

#### **JUNE**

**June 6-13:** LWV-California Convention (virtual)

**June 15:** LWV-Woodland Annual Meeting, 6:00pm, Historic Woodland Hotel (Main and College Streets)

#### **JULY**

No Board of Directors Meeting

#### **AUGUST**

Date of Board Meeting to be determined

All League members are welcome to attend Board meetings, which are being conducted via Zoom during the pandemic.

Contact Karen Urbano at [karenjean@earthlink.net](mailto:karenjean@earthlink.net) or (530) 662-0755 for information about attending a Board meeting via Zoom.

---

## **TABLE OF CONTENTS**

- **President's Message**
- **League of Women Voters News**
- **DEMOCRACY WORKing Update**
- **Legislative Interview: Senator Bill Dodd**
- **Youth Empowerment Summit (YES!)**
- **Housing Survey Results**
- **Woodland League Website**
- **Reaching Out to Our Neighbors**
- **From Our Past**





## **PRESIDENT'S MESSAGE**

**By Pat Butler**

---

We are moving toward the end of this League Year although there are still many things to wrap up. Our Spring Series, DEMOCRACY WORKing, has one more event scheduled in the three-part series. The final event will spotlight the three new members of the Woodland City Council. Part Two, conducted virtually on April 21, focused on the new Woodland Joint Unified School District trustees who gave insightful and informative answers to all questions. League member Robert Salley summed up his impression succinctly with “I know those of us who did (view the event) could not help but be impressed by these members. They represent experience, knowledge and a welcome diversity that, more and more, mirrors our city’s population.”

This Series was the only fundraiser for our fiscal year. The amount of profit from our tickets and sponsorships is not known as yet, but it was a fun and exciting venture into a different way of doing a fundraiser. It joins other events and activities in a year of doing things differently.

Our Annual Meeting is planned for June 15 and your Board, in a leap of faith, is planning an outdoor affair the very evening of the day when California is scheduled to Open Up!! They have chosen the historic Hotel Woodland’s outside patio with the inside dining room available should there be difficulties with the weather. Obviously, plans are in progress and there will be more information forthcoming. Please note that the date of this gathering changed from the previously scheduled June 8 to Tuesday, June 15, at 6:00pm. Your Annual Meeting Packet, complete with the information required, will be sent to each member on or before May 15 via email of a special edition of THE VOTER or by postal service for those members who can’t access email.

We look forward to seeing you at this year’s final event and plan to have the posters, displays and resolutions awarded by your League available for viewing by those who were unable to enjoy seeing them at our very successful 100th Year Birthday Gala.

---

## **LEAGUE OF WOMEN VOTERS NEWS**

Please visit the California and National League websites to stay on top of news and events. Click here – [California Convention](#) – for more information about our virtual state convention June 7-13, 2021.

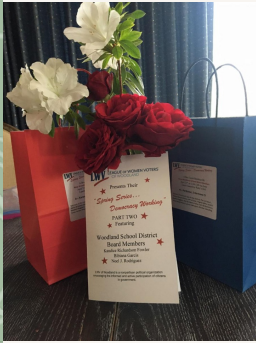


Do any of the following topics interest you: fighting voter suppression, money in politics, redistricting? If so, click here – [National Website](#) – for more information from the national League of Women Voters.

---

## DEMOCRACY WORKing UPDATE

by Judy Wohlfrom



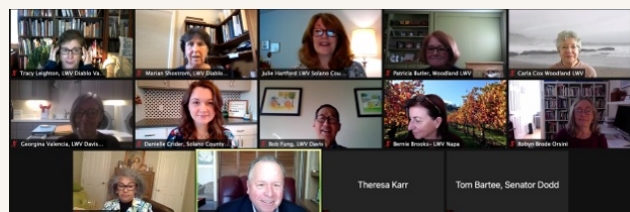
The first DEMOCRACY WORKing event on March 24 went off with minimal hitches. We served 23 lunches from Barajas Deli and had a total of 25 guests registered for the Zoom Town Hall-type meeting to get acquainted with Angel Barajas, the Yolo County Supervisor of District 5. The Zoom event was hosted by Carla Cox.

The second event was held Wednesday, April 21, with Pat Butler hosting the Zoom event. Boxed lunches were provided by Raley's Deli. During this event we met the newly elected Woodland Joint Unified School District members: Kandice Richardson Fowler, Bibiana Garcia, and Noel J. Rodriguez.

We look forward to the third *Spring Series . . . DEMOCRACY WORKing* on May 19 when we will be hearing from new Woodland City Council members Tania Garcia-Cadena, Victoria Fernandez and Mayra Vega. Lunch will be provided by Cracchiolo's Catering. For more information about this event, please click on this link - [Spring Series](#).

This series is a major fundraising event for our League, and we have received donations totaling \$870 from 15 sponsorships. As of this date, we have taken in \$940 for lunch reservations for all three events combined. Our thanks to the Board members who organized this series of informational and fundraising events.

---



---

## LEGISLATIVE INTERVIEW: SENATOR BILL DODD

By Carla Cox

Legislative Interviews are one way to learn more about the views of our state representatives, as well as introduce legislators to League members in their district and increase their awareness of the League's interest in policies they are considering.

Members Pat Butler and Carla Cox of LWV-Woodland joined members of five other area Leagues (Davis Area, Diablo Valley, Napa County, Solano County, and Sonoma County) to interview Senator Bill Dodd (Senate District 3) on February 10, 2021. Senator Dodd responded to questions on climate change and land use, affordable housing and zoning,



and COVID 19 recovery. Senator Dodd also discussed some of his personal legislative priorities. The questions were developed by LWV California to learn about the views of state legislators on these priority topics. Click here - [Interview With Senator Dodd](#) - to read the full text of the interview.

---

## **Youth Empowerment Summit (YES!) By Marla Peri**



The Youth Empowerment Summit is a program designed to encourage youth leadership and participation in civic engagement and the 4<sup>th</sup> annual summit was held virtually in 2021.

The program is a collaboration that includes, though it is not limited to, the following organizations:

- Yolo County Elections Office
- Woodland Public Library
- League of Women Voters (Woodland and Davis)
- Yolo County Office of Education
- Early Academic Outreach Program at UC Davis
- Woodland Community College
- Woodland Community College Educational Talent Search Program
- Empower Yolo (ASSETs – a program funded by Yocha Dehe Winton Nation)
- Yolo County Library
- Yolo County Friday Night Live
- West Sacramento Home Run
- The History Project at UC Davis
- Rise, Inc.

### **Woodland League of Women Voters Participation**

The 3<sup>rd</sup> annual YES! was held virtually in the fall of 2020. The Woodland LWV participated by making a presentation on Voter Registration to the Woodland Public Library Teen Advisory Board.

In 2021, the Woodland League contribution included a financial donation as well as volunteer participation.

### **YES! Spring 2021**

YES! was held virtually again the morning of April 24. Dr. Shirley N. Weber, California Secretary of State, was the keynote speaker. Participants from local government included members from the Yolo County Board of Supervisors, City Councils, and other elected officials. Click on this link – [YES! 2021](#) – for more information.

---

## **HOUSING SURVEY RESULTS By Janet Ruggerio**

Thank you LWV-Woodland members. We received 24 responses to the LWV Housing Survey. The following is a summary of the results of the



1. What do you believe is the most significant housing issue facing Woodland?

- Supply of housing: 58.3%
- Cost of housing (both rental and sale): 66.7%
- Homelessness: 66.7%
- Condition of housing: 8.3%
- I don't really know: 4.2%
- People from outside Woodland coming here: 4.2%

2. Should Woodland increase the number of rental units?

- Yes: 60.9%
- No: 0%
- Maybe: 30.4%
- No knowledge to answer the question: 4.3%
- For very low-income households: 4.3%

2.a. If yes to Question #2, what type of rental units are need:

- Affordable Housing: 65%
- Families: 20%
- Seniors: 0
- Co-housing: 5%
- All kinds: 5%
- All of the Above: 5%

3. Would you support any of the following options as they relate to housing?

- Infill housing development: 91.7%
- Sustainable/green design: 70.8%
- Accessory dwelling units: 70.8%
- Conversion of commercial property to housing: 70.8%
- Mixed uses (commercial/residential): 54.2%
- Co-housing: 4.2%
- Emergency LGBTQ homeless housing: 4.2%

4. Do you think there should be more housing code enforcement in Woodland?

- Yes: 21.7%
- No: 21.7%
- Maybe: 39.1%
- Yes, unpermitted projects and poorly maintained rental units need more oversight: 4.3%
- I don't know/uninformed: 8.6%

**Comment:** I have spoken with Ken Hiatt (Woodland City Manager) about using a graphic code for proposed new development. I think we need a more enlightened code, one that protects older housing and extends the main street core to the east and west of the core.

4.a. If yes to the above question, should housing code enforcement apply to:

- All housing, usually by complaint: 26.7 %
- Rental units as they are rented: 26.7 %
- Housing as it is sold: 13.3 %
- Rental units, annually: 6.6 %
- Rental units as they are sold and rental units as they are rented: 6.6%
- I don't know: 13.3%
- All Housing moving forward: 6.6%

5. How should Woodland address homelessness, recognizing the City's requirement to serve the homeless?

- More shelter beds: 54.2%
- Increase supply of affordable units: 58.3%
- Convert motel units to house the unhoused: 66.6%

- Increase health services (both physical and mental health services): 95.8%
  - Provide other social services and job services as needed: 79.2%
  - Much of this is already being done: 4.2%
  - I would have to research the issue: 4.2%
  - A combination of solutions is needed: 4.2%
  - Emergency shelter for women, children and families: 4.2%
  - A combination of solutions to accommodate the need: 4.2%
6. Housing should:
- Be located near transportation corridors including transit, pedestrian and bike pathways: 83.3 %
  - Be built with easily accessible parks, schools, and open space: 58.3%
  - Include more work-force housing (Cost/Size adjusted to serve working income residents): 70.8%
  - Include more first-time homebuyers programs: 58.3%
  - Integrate rental housing in all residential neighborhoods, e.g., duplexes, garden courts, ADU's, etc.: 54.2%
  - Include all types of housing: courtyard units, co-ops, senior complexes: 66.7%
  - All new housing should be partially accessible: 33.3%
  - Housing should be sustainable: 4.2%
  - I have concerns about overbuilding of land: 4.2%
  - All new homes should include accessibility/ADA: 8.3%
  - What does partially accessible mean? 4.2%
7. Fair housing rules must be followed to avoid discriminatory practices in all types of housing and should be enforced by the City:
- Agree: 100 %
  - Disagree: 0
8. City should explore ways to reduce cost of housing and support new methods to reduce the cost, including shortening the time for the processing of development:
- Agree: 82.6%
  - Disagree: 4.3%
  - One should not skip regulations that impact safety and greenhouse gas emissions: 4.3%
  - I agree with the first parts of the sentence, don't know if length of time for processing development should be reduced: 4.3%
  - I don't think these are the right options to answer this question: 4.3%
9. Do you support programs for the rehabilitation and preservation of the existing housing stock?
- Yes: 83.3%
  - No: 0
  - Maybe: 8.3%
  - Assuming the housing unit is worth preserving – case by case basis: 4.2%
  - Sounds reasonable but I do not know the issue: 4.2%
10. What is needed to support affordable housing projects (usually rentals) within this community?
- Good design: 65.2%
  - Density/Number of units in development: 52.2%
  - Management/maintenance of complex once constructed: 78.3%
  - Education of the community as to need: 47.8%
  - Funding: 47.8%
  - Ongoing maintenance is really important: 4.3%
  - Community education is key. LWVW could provide that education: 4.3%
  - Don't know: 4.3%
  - Multiple housing types (casitas, mixed use, etc.): 4.3%



Based on the results of this survey and the discussions held in housing study meetings, the following DRAFT housing position was prepared. Thank you also to Laura Caruso Kofoid and Carla Cox who helped us in our work on this Position. We welcome any comments you may have regarding the position and the housing study committee will review the comments we receive and modify the housing position. The revised Housing Position will be then sent out as part of the Annual Meeting packet. It is our intention to recommend the Position for adoption by the Woodland League at the annual meeting.

---



## **DRAFT HOUSING POSITION**

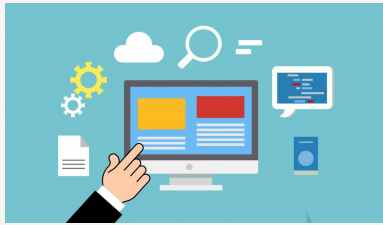
### **Proposed Local Housing Position for Woodland:**

1. Support equal opportunity in housing through programs and policies which provide equal opportunity for access to housing without discrimination based on race, color, gender, religion, age, national origin, sexual orientation or disability.
2. Support the provision of quality and safe housing for all persons in the community.

### **Objectives:**

1. Encourage the rehabilitation and preservation of the existing housing stock including those identified as historic structures.
2. Support Woodland's Code enforcement program to reduce substandard housing and to preserve the appearance and safety of residential properties and neighborhoods.
3. Support infill development including the conversion of other non-residential land uses for housing.
4. Support all different types of residential housing including but not limited to Accessory Dwelling Units (ADU), duplexes, co-housing, garden courts, entry-level for-sale and mixed use.
5. Support affordable housing projects which serve families, seniors and singles below the poverty level.
6. Promote sustainable and green design for all housing which increases energy efficiency in new residential construction (See Climate Change position).
7. Increase residential density next to transportation corridors including transit, pedestrian and bike pathways as well as ensuring to accessibility to parks, schools and open space.
8. Support housing for the unhoused including emergency shelters that also provide support services for physical and mental health needs, job training and other needed services.
9. Encourage city and county financial assistance to encourage construction and the rehabilitation of affordable housing.
10. Assist in the education of the Woodland community to fully understand the need for housing at all levels.

Please send any questions, comments or suggested changes the draft housing position to Janet Ruggiero at [jmruggiero@sbcglobal.net](mailto:jmruggiero@sbcglobal.net) or Elizabeth Kemper at [busybeth@wavecable.com](mailto:busybeth@wavecable.com). We look forward to receiving your comments and thank you.



## WOODLAND LEAGUE WEBSITE

By Pat Butler

Please remember to visit our League website for updates from National, California's League and news of your own league and community events. We are focusing on your recommendations to publish more local items and will continue to get as much updated local news available there for your reading pleasure. Please click here – **Your League Website** – to see our progress to date.

Unfortunately, one of the biggest challenges to date is managing technical glitches, especially with establishing our Members Only Section Log-on process. Currently, the section is “up,” but logging on has proven to be difficult for many of the Board members serving as testers. We will continue to work on this process and expect to publish instructions that will make your log-on easier.

Thanks for your patience and stay tuned!



## REACHING OUT TO OUR NEIGHBORS

By Lorna Carriveau

Yolo County is made up of so many different communities, urban/rural, ethnic, racial, etc. As our League moves forward, we want to make sure our neighbors have opportunities for their voices to be heard and represented. LWV-Woodland already communicates regularly with the Davis area League. We've now added the Valley Voice, a monthly newsletter published by RISE, Inc., focusing on Capay Valley news and activities, to receive issues of THE VOTER. If you know of someone living in

## FROM OUR PAST

By Lorna Carriveau

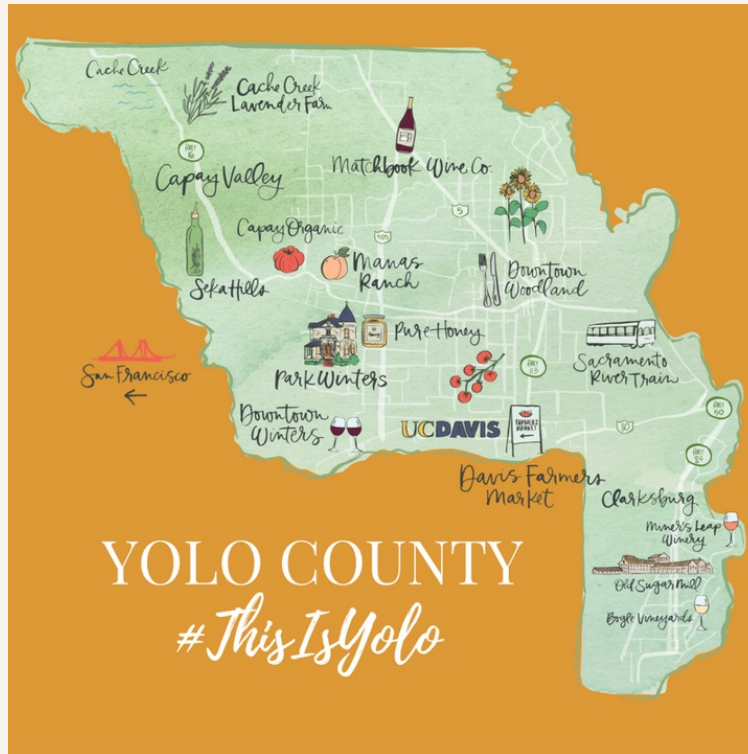
This is the second installment of the From Our Past series based on the 1980 book, A View of Yolo County's History & Government, published by the League of Women Voters-Woodland. Below is an excerpt from the section on Population, some of which has changed quite a bit since the late 1970's. For example, the 2021 estimated population for Yolo County is 221,264 ([worldpopulationreview.com/us-counties/ca/yolo-county-population](http://worldpopulationreview.com/us-counties/ca/yolo-county-population)).

*Presently, the County of Yolo has 107,100 persons with a population density of 102<sup>1/2</sup> persons per square mile. Three towns – Woodland, Davis, and Winters – are incorporated. From 1940, the County has grown in population from 27,000 to the current 107,100 with most of the growth occurring in the urban areas. Within the County, there is a very slight movement from rural to urban areas, with the urban*



Madison, Esparto, Brooks, or anywhere else in the Capay Valley who might be interested in learning more about our League, please contact Karen Urbano of Membership.

areas containing 60 percent of the population. Ethnically, the census records indicate that 77 percent of the Yolo County population are white; 11 percent are Mexican-American; 1.2 percent are black; 1.1 percent are Japanese; .8 percent are Chinese; and the remainder are Filipino, East Indian, Pakistani, Vietnamese, and Cambodia. In 1979, there were approximately 53,000 registered voters.



**LWV** LEAGUE OF WOMEN VOTERS®  
OF WOODLAND

**P.O. Box 2463  
Woodland, CA 95776**