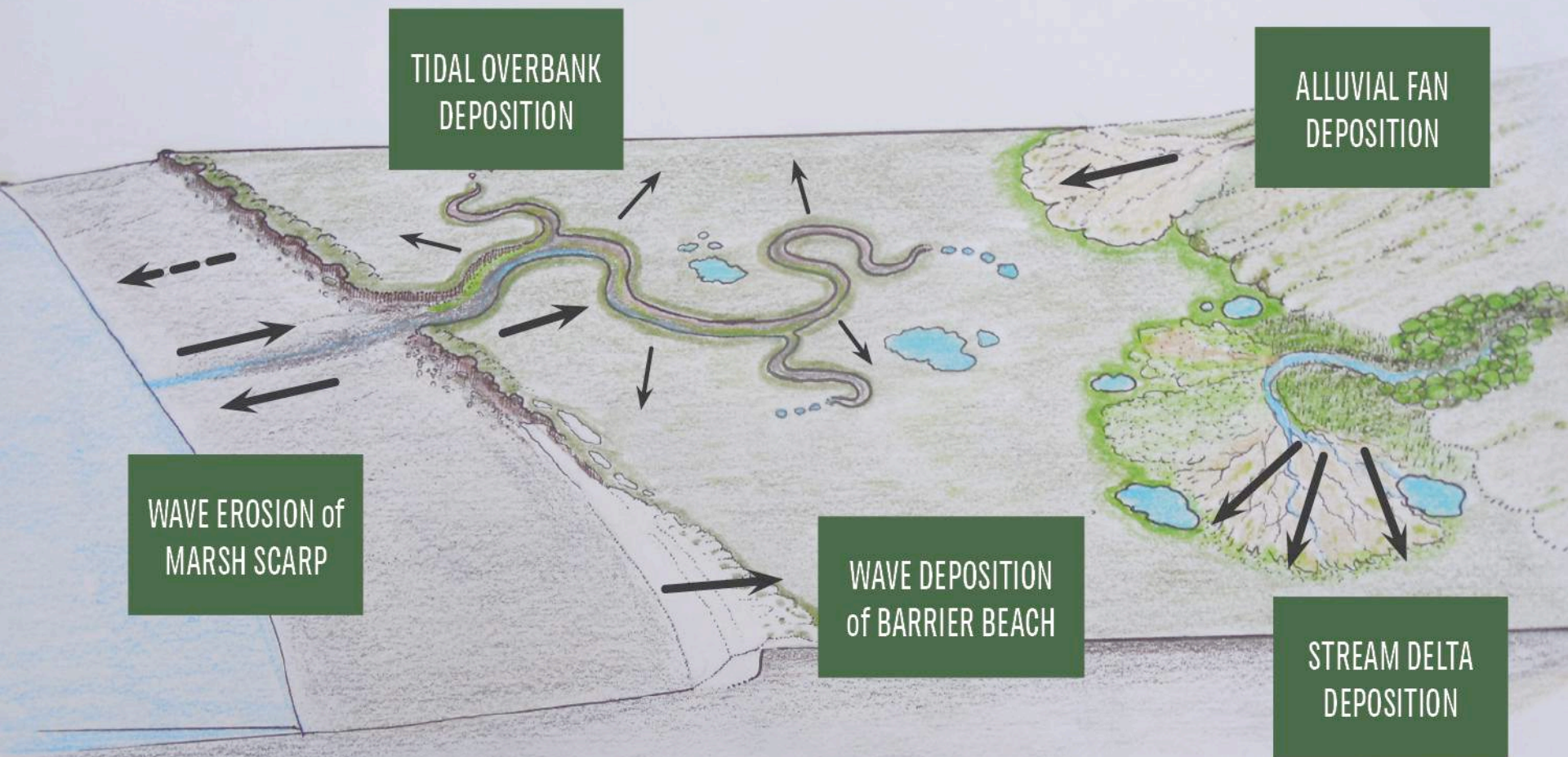


MEANS
RESTORING

PROCESSES

NOT JUST
PLACES

COURTESY PETER BAYE



The Baylands and Climate Change:
What We Can Do (2015)

PLAN FOR THE BAYLANDS TO *migrate*



PLAN FOR THE BAYLANDS TO *migrate*



PLAN FOR THE BAYLANDS TO *migrate*





MIGRATION SPACE

strategies

- *Acquire and conserve*
- *Construct (horizontal levee)*
- *Planned retreat*

Wildlife Found Only in SF Bay Tidal Marshes



Not only endangered species.....



California Vole



Song Sparrow. Photo from PBCS by Tom Grey.



California Black Rail



Salt Marsh Wandering Shrew



Savannah Sparrow



Salt Marsh Common Yellowthroat



Western Harvest Mouse

Prior Planning Supports Elevated Causeway

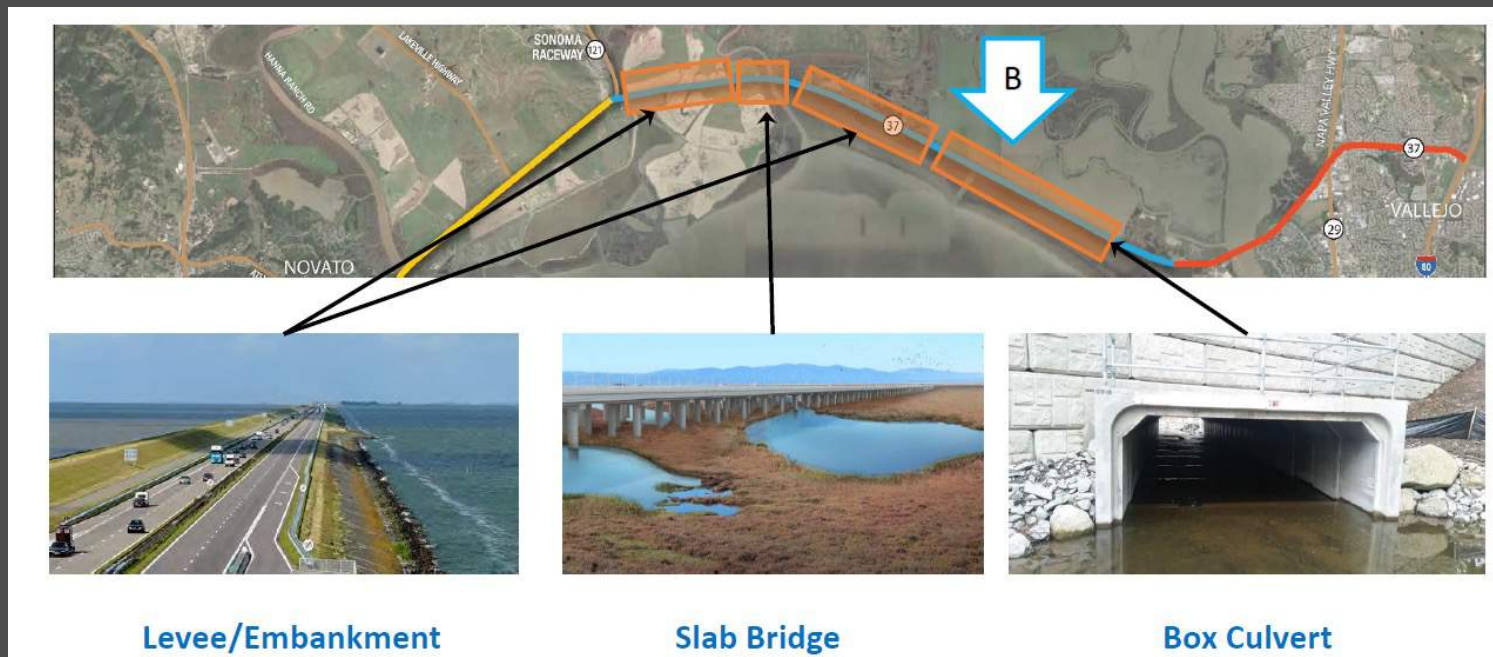
Baylands Goals Update Recommendation for North Bay Region:
“Elevate Highway 37 and modify or realign rail lines and other infrastructure to allow the full passage of water, sediment and wildlife.”



SR 37 Corridor Improvement Plan

SR 37 Policy Committee

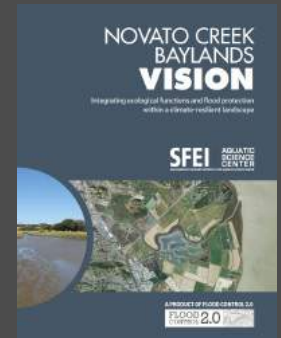
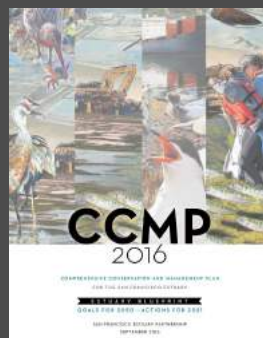
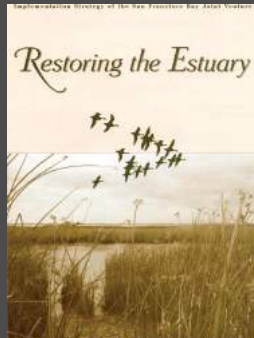
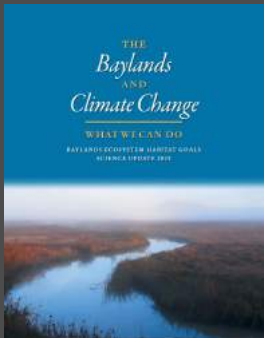
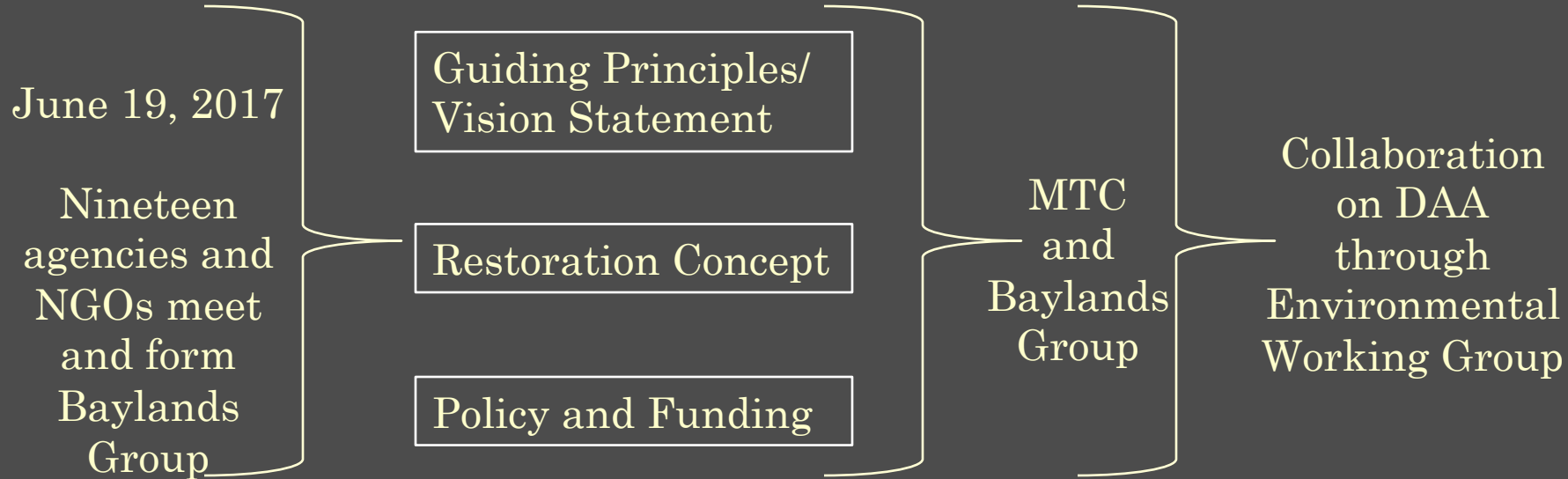
- SR 37 Corridor Improvement Plan
 - Draft Corridor Improvement Plan, Fall 2017
 - Design Alternatives Assessment (DAA), Spring 2018



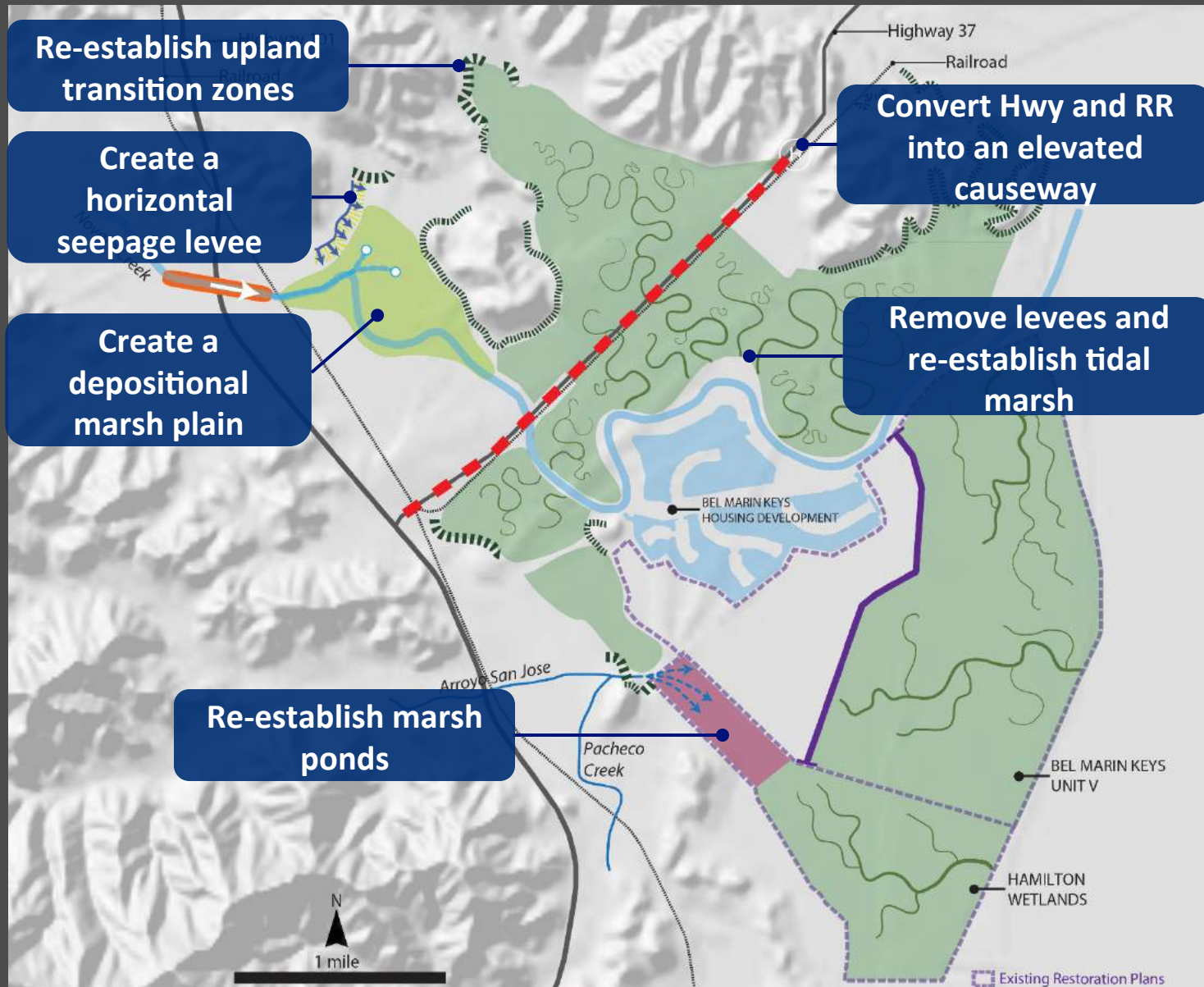
- Raised roadbed with a combination of embankment, box culverts, slab bridge

SR 37 – Baylands Group Work Plan

Committees



Flood Control 2.0 as a Model Process: Novato Creek Baylands Long-term Vision



Comments on SR 37 Corridor Improvement Plan

- Integrate corridor improvements with existing habitat goals
- Define project as array of alternatives that meet transportation goals
- Improving ecological connectivity should be a central objective
- Direct impacts to habitats and wildlife, including endangered species, must be avoided or minimized
- Any mitigation should be accomplished on site by supporting wetlands restoration in the San Pablo Baylands
- Near-term solutions should protect wetland resources and maintain restoration options to the maximum extent possible

Objective: Integrate, Don't Mitigate

Improvement of the SR 37 transportation corridor must be compatible with and advance the habitat conservation and restoration goals for the San Pablo Baylands

