



League of Women Voters  
of Wellesley

*"Beyond White Picket Fences: The  
2020 Census*

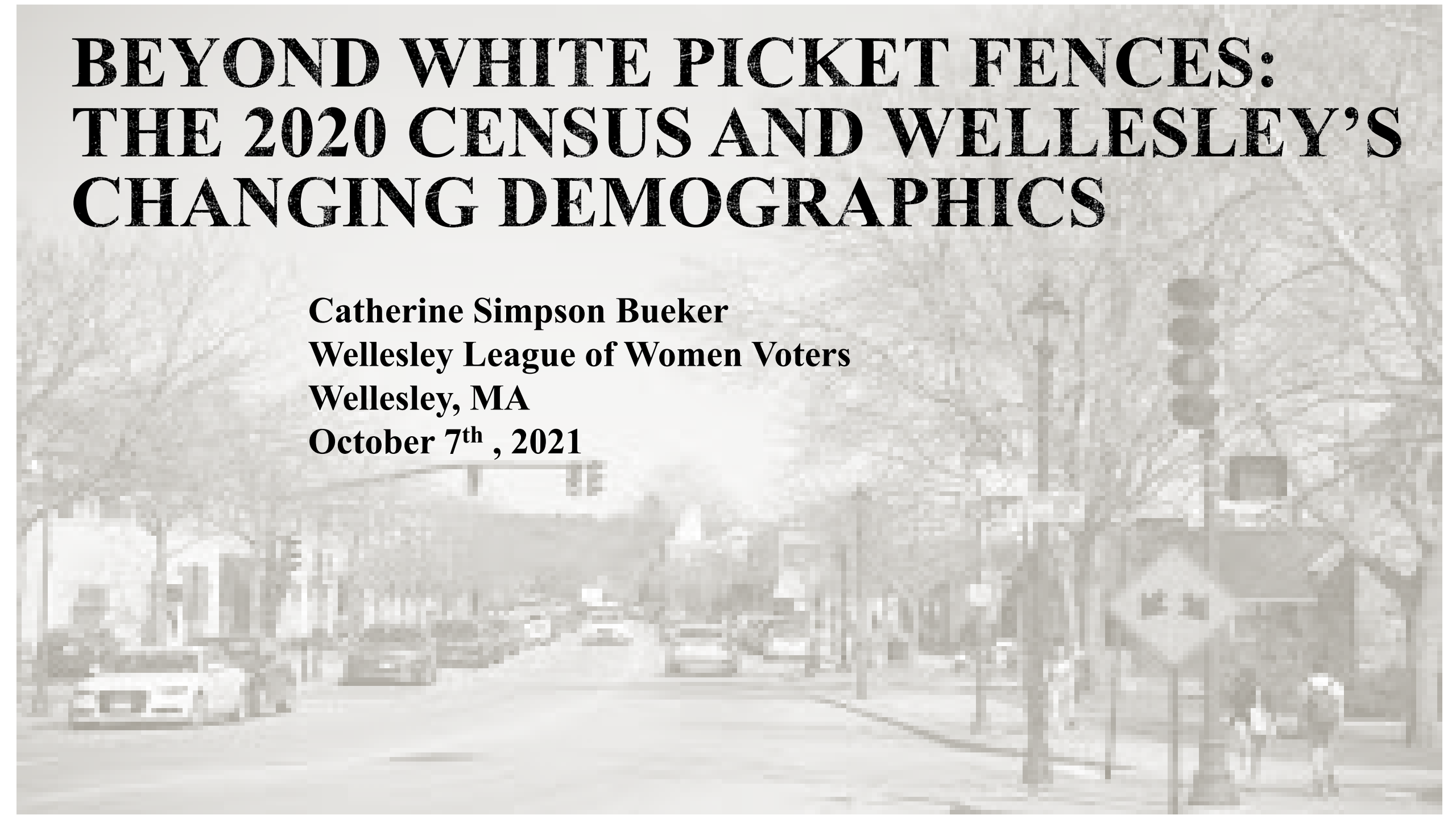
*and Wellesley's Changing  
Demographics"*

GUEST SPEAKER:  
CATHERINE SIMPSON  
BUEKER, PHD  
PROFESSOR AND CHAIR,  
DEPARTMENT OF SOCIOLOGY,  
EMMANUEL COLLEGE

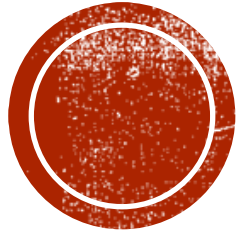


# **BEYOND WHITE PICKET FENCES: THE 2020 CENSUS AND WELLESLEY'S CHANGING DEMOGRAPHICS**

**Catherine Simpson Bueker  
Wellesley League of Women Voters  
Wellesley, MA  
October 7<sup>th</sup> , 2021**



**1) WHAT IS WELLESLEY'S "NEW" DEMOGRAPHIC REALITY?**



**2) WHAT ARE OUR PERCEPTIONS?**

**3) WHAT ARE THE IMPLICATIONS FOR CIVIC ENGAGEMENT?**



# WELLESLEY, THEN...AND NOW

■ 99%

■ .4%

■ .7%

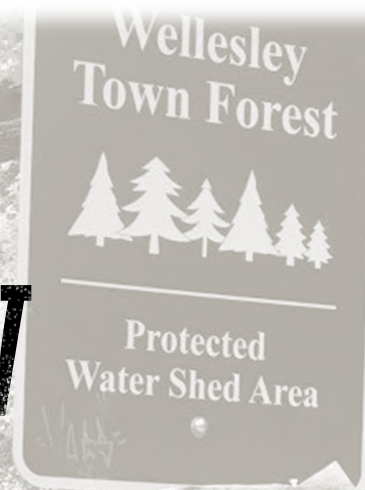
■ 7%

■ 73%

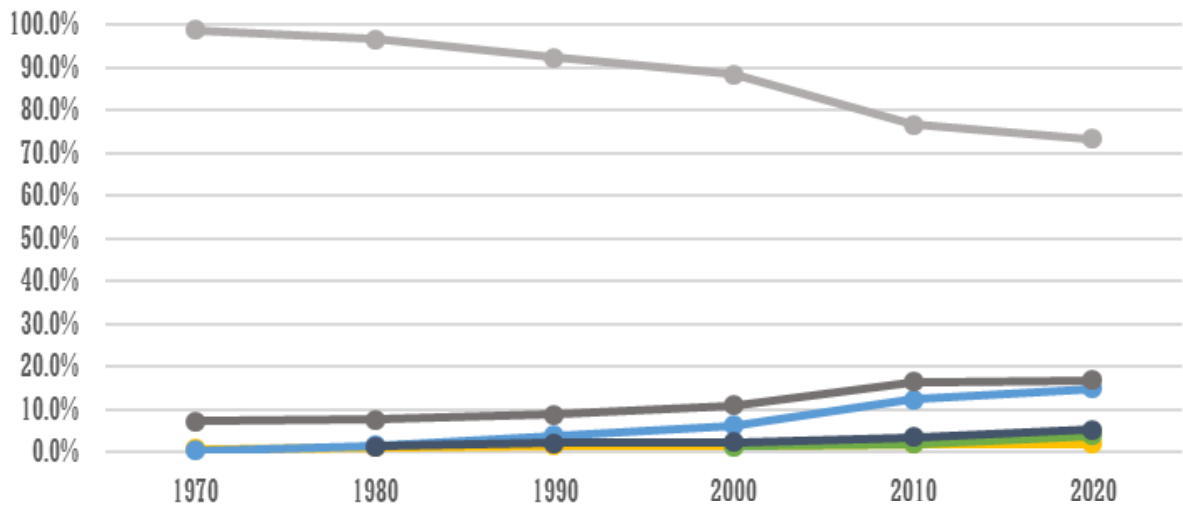
■ 15%

■ 2%

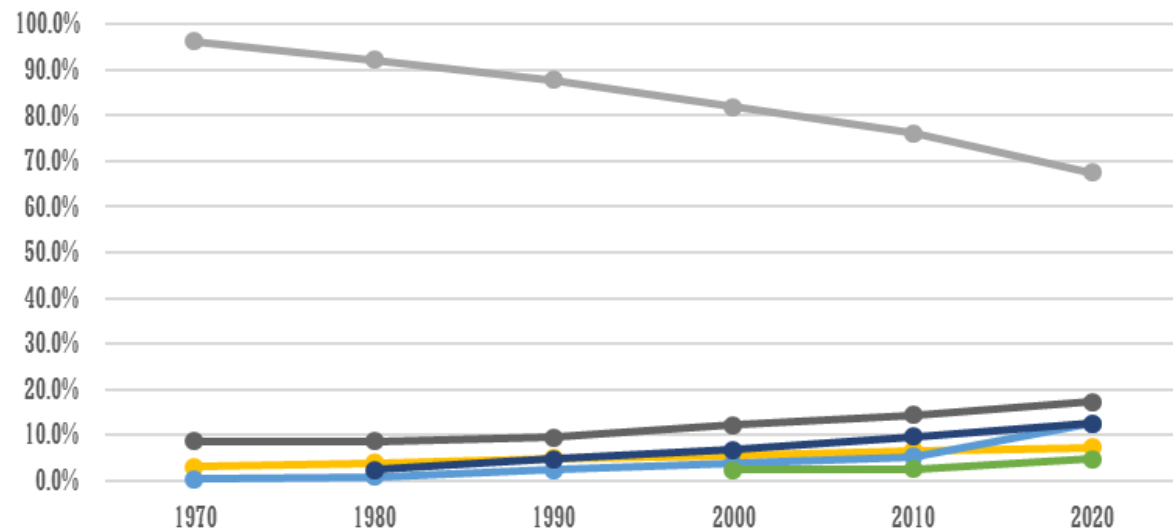
■ 17%



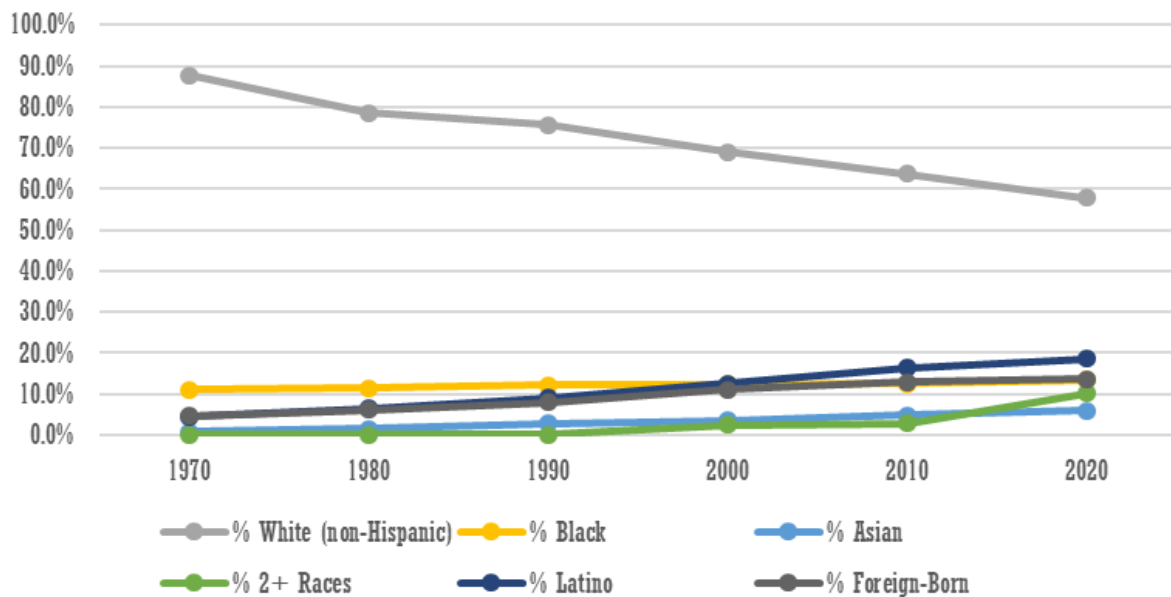
**Wellesley:**  
Racial and ethnic changes over time, 1970-2020



**Massachusetts:**  
Racial and ethnic changes over time, 1970-2020



**United States:**  
Racial and ethnic changes over time, 1970-2020







# HOW WOULD YOU DESCRIBE WELLESLEY TO SOMEONE WHO HAS NEVER BEEN HERE?

- “wealthy,” “upper middle class,” “high income,” “affluent”
- “good schools,” “strong educational system”
- “beautiful”
- “active,” “engaged”
- “WASPY,” “white”



# HOW DO YOU THINK WELLESLEY HAS CHANGED?

- “increasing wealth”
- “decreasing diversity”
- “increasing diversity” > sort of...





# INCREASING DIVERSITY

“It’s been encouraging to see you know, BLM and Stop Asian Hate and other yard signs. I saw recently that the measure to replace Columbus Day with Indigenous People’s Day passed. And so when I think of Wellesley now, I think about those kinds of changes that are being made, but I still very much associate Wellesley with being fairly WASPY and homogenous.”





**NEW DEMOGRAPHICS = NEW NEEDS & OPPORTUNITIES...**





**OLD PERCEPTIONS + NEW NEEDS = MISSED OPPORTUNITIES**



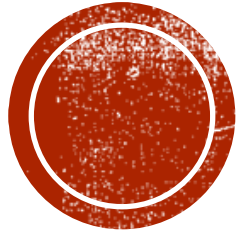


# WHERE DO WE GO FROM HERE?



+





**QUESTIONS?**

- New Members Always Welcome,
- Visit us at [LWVWellesley.org](http://LWVWellesley.org)

**UPCOMING LWVW EVENTS:**

**OCTOBER**

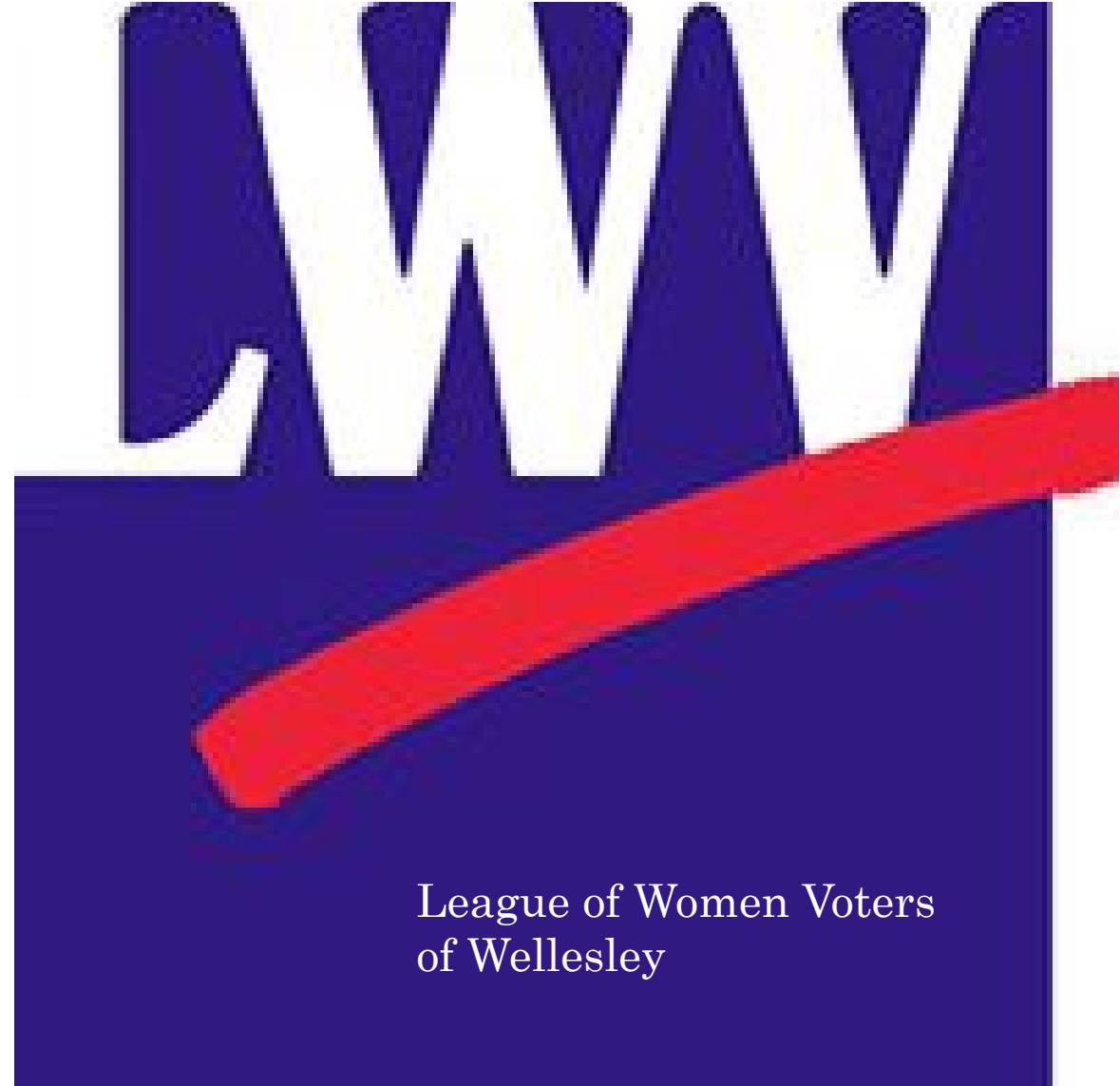
**TUES, OCT 12 BOARD MEETING 12:30 – 2:30 PM'**  
**THURS, OCT 21 TOWN MEETING PREP, VIRTUAL, 7PM**

**NOVEMBER**

**TUES. NOV. 9 BOARD MEETING 12:30 – 2:30 PM**  
**T/W/T NOV. 16, 17, OR 18 –POSSIBLE DEBT EXCLUSION FORUM**

**DECEMBER**

**WED, DEC. 1 HOW TO RUN FOR OFFICE 7 – 8 PM**  
**FRI. DEC. 3 POSSIBLE MEMBER COFFEE W/ SCHOOL COMM MEMBERS**  
**TUES. DEC 14 BOARD MEETING 12:30 – 2:30 PM**  
**JANUARY**  
**SUN, JAN 9 BOOK TALK -*THE SUM OF US* BY HEATHER MCGHEE W/ WOW'S CHRISTINA HORNER & RAMA RAMASWAMY**



League of Women Voters  
of Wellesley

