

Butte-Glenn Community College District

Trustee

The Board of Trustees is committed to fulfilling its duties and responsibilities to the District by:

- representing the public interest;
- establishing policies that define the institutional mission and set prudent, ethical and legal standards for college operations;
- hiring and evaluating the CEO (Superintendent/President);
- delegating power and authority to the Superintendent/President to effectively lead the District;
- ensuring fiscal health and stability;
- monitoring institutional performance and educational quality; and
- advocating and protecting on behalf of the District.

Number of elected officials: seven publicly elected officials, and one student elected by the student body. Five trustees represent Butte County and 2 represent Glenn County.

Glenn County Demographics:

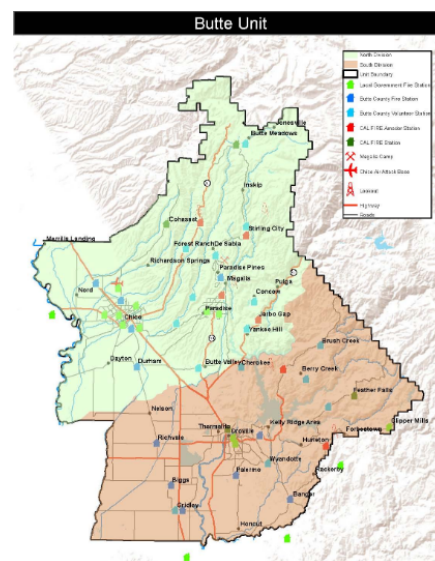
The 2010 United States Census reported that Glenn County had a population of 28,122. The racial makeup of Glenn County was 19,990 (71.1%) White, 231 (0.8%) African American, 619 (2.2%) Native American, 722 (2.6%) Asian, 24 (0.1%) Pacific Islander, 5,522 (19.6%) from other races, and 1,014 (3.6%) from two or more races. Hispanic or Latino of any race were 10,539 persons (37.5%).



Butte County Demographics: The 2010 United States Census reported that Butte County had a population of 220,000. The racial makeup of Butte County was 180,096 (81.9%) White, 3,415 (1.6%) African American, 4,395 (2.0%) Native American, 9,057 (4.1%) Asian, 452 (0.2%) Pacific Islander, 12,141 (5.5%) from other races, and 10,444 (4.7%) from two or more races. Hispanic or Latino of any race were 31,116 persons (14.1%).

Length of term: 4 Years

Districts: In Butte County, trustee areas will match the boundaries, to the extent possible, established for the Board of Supervisors' representative areas. In Glenn County, Trustee Area 6 will be comprised of that portion of the Orland Joint Union High School District with Glenn County and the Hamilton Union High School District. Trustee Area 7 will be comprised of the Willows Unified School District and that portion of the Princeton Unified School District within Glenn County.



Student Trustee: The Board shall include one non-voting student member. The term of office shall be one year commencing June 1. The student Trustee shall be elected by all the students in a general election held for that purpose.

Board Meetings: The Board meets once monthly – twice each year at the Glenn County Center and all other times on the main Butte College campus. Meetings are held in the district board room. The meeting times can be found through this link:

https://www.butte.edu/community/getting_involved/contacts/trustees/meeting-dates.html . The agenda, minutes, and supplemental documents can be found through this link:

https://www.butte.edu/community/getting_involved/contacts/trustees/minutes.html .

Contact Information:

Butte College | 3536 Butte Campus Drive, Oroville CA 95965
General Information (530) 895-2511

Contact link: https://www.butte.edu/community/getting_involved/contacts/index.html