

www.lwvpalosverdes.org

(310) 784-7787

July/August 2017

Calendar 2017

Wednesday	July 5	County Board Meeting	9:30-1:00	TBD
Wednesday	July 12	Board Meeting	Noon	Nell Mirels' House
Saturday	July 29	Popovers (County League Day)	9:30 am-2:00 pm	Pasadena Women's Club
Wednesday	August 2	County Board Meeting	9:30-2	TBD
Wednesday	August 9	Board Meeting	Noon	Nell Mirels' House

Inside This Issue

Co-Presidents' Message.....	Page 2
NOAA write-up from Annual Convention.....	Pages 3,4,5
Save The Date - Elected Officials Party.....	Page 6
Legislative Corner.....	Page 7
State Legislative Action.....	Page 8
Popovers in Pasadena Sign-up Flyer.....	Pages 9-10
Membership Form.....	Page 11
Board List.....	Page 12



This Month's Presidents' Message

It is the start of a new year for us and we welcome all to join us as we plan an ambitious year ahead. If you have not been active in the League, now is a good time to start!

If you have not yet sent in your dues please do so now. We have to start sending in our per- member payments in August to the National League. Remember your dues and any donations you wish to make are tax deductible.

This year we are going to try again to have a monthly members meeting and will also try to have some sort of a presentation as well at these meetings. Look for an announcement for these meetings soon. If you have not tried to send a message to your congressman—the state and national sites make this very easy. It is a simple, fast way to make your voices heard. We will be sending out notices of the bills we wish to support and the urgency of the bills as well. Recently we sent out a notice about HR2978. This is a bill to try and correct voting rights. Many states have implemented laws to make voting more difficult—especially for poorer communities. This law is intended to put some protection of voters back in place. We are also taking an active role in the Health Care discussion. We will try in our Voter to have a section on what League is doing with various bills. This is a core part of League work and we want you to know about some of it.

We continue to have membership participation problems. We know many of our members are older and it is sometimes difficult to get out, but we will try and arrange transportation for any of our events you wish to attend but need transportation—just let us know. Now is the time for our younger members to step up and help keep our League moving forward. At our convention we failed to have a quorum to vote in the new board and so have to make arrangements for this at our next board meeting. We were lucky enough to have an excellent speaker who was very interesting about the waters off the Peninsula. See Pat Colby's report for a summary of this.

Lastly, don't forget to sign up for Popovers—always a very stimulating day.

Vi Jungerich (310-541-5092) and *Karen Buresh* (310)544-8272
Co-Presidents

Rehabilitation Projects on the Offshore Palos Verdes Shelf

by Pat Colby

The League of Women Voters of Palos Verdes Peninsula held its 17th Annual Convention on June 10, 2017 at the Think Café in San Pedro. The featured speaker, biologist, Dr. David Witting with the National Oceanic and Atmospheric Administration (NOAA), outlined the development of the Palos Verdes Reef Restoration Project. The purpose of the project is to restore historic rocky reef habitat that will provide essential fish habitat and substrate for kelp and other marine life, compensating for lost biological resources caused by contaminants and former landslide activity in the area.



History:

The Palos Verdes Shelf is a large area of DDT and PCB contaminated sediment located in the ocean off the Palos Verdes Peninsula. The DDT presence in the PV sediments largely results from waste water discharges from the former Montrose Chemical Corporation manufacturing plant located in Torrance which operated from the mid 40's to the late 70's.

DDT waste water was discharged from the Montrose plant to local sewers and conveyed to the Joint Water Pollution Control Plant (JWPCP) owned and operated by the County Sanitation Districts of Los Angeles County. PCBs from several sources in the greater Los Angeles were similarly conveyed to the JWPCP

which released the contaminated water through submarine outfalls located off the Palos Verdes Peninsula. It is estimated that over 1,700 tons of DDT were discharged by the JWPCP from the late 1950's to the early 1970's.

The area of highest levels of contaminants in sediment, approximately a mile and a half offshore, have gradually been covered over by solids from the nearby Portuguese Bend landslide area. DDT and PCBs at the PV Shelf do not pose a risk for swimming and other marine activities, but they do pose problems for animal life.

Various species of birds in the ocean off Southern California today continue to suffer elevated levels of DDT and certain fish are so contaminated that the State of California has banned some commercial fishing in the area. Sea lions and dolphins carry the highest body-fat concentrations of DDT and PCBs that NOAA biologists have ever discovered.

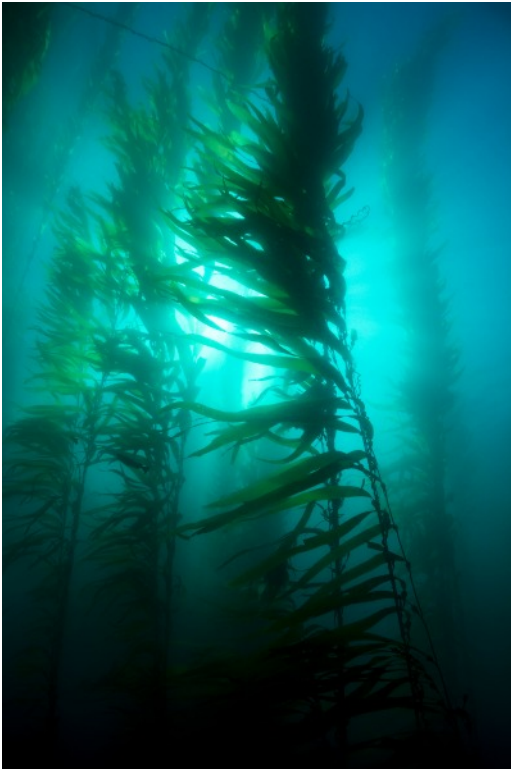
Corrective Steps:

In 1990 NOAA, the Environmental Enforcement Section (EES) and other agencies, filed suit against eight alleged corporate polluters, accusing them of dumping toxic wastes into Southern California coastal waters for decades. The suit invoked a long-ignored provision of federal environmental law to force polluters to both clean up toxic waste and restore damaged wildlife habitats to their natural state (the Super Fund). A total of \$140 million was paid by the various defendants into interest-bearing escrow accounts for use by the U.S. Environmental Protection Agency (EPA) and other suing litigants, \$94.3 million and by the Montrose Settlements Restoration Program, \$45.7 million. No taxpayer dollars are involved in these rehabilitation programs.

NOAA - continued from page 3

Development under the Montrose Settlements Restoration Program:

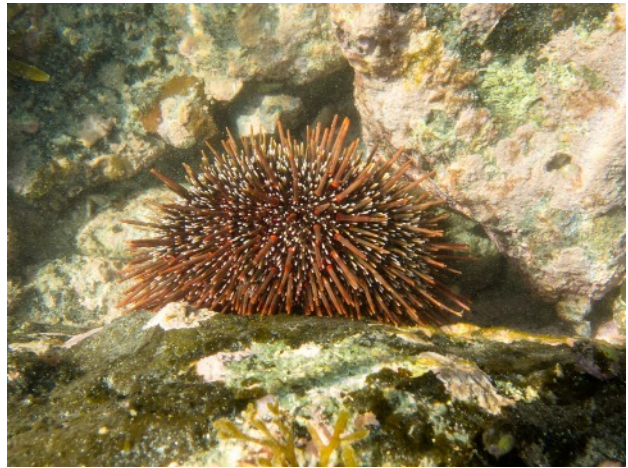
For 15 years, NOAA, the lead agency for the Montrose Settlements Restoration Program (MSRP), has worked with numerous agencies and under the mandates of numerous laws* to develop a two-phase plan for the Palos Verdes Shelf project.



Phase 1—Kelp Forest Restoration (completed in 2012): Nearly 100 acres of reef habitat along the PV coast was covered by “urchin barrens” where the densities of urchins were extremely high and kelp plants were non-existent. When sea urchin populations are stable they are part of a healthy kelp eco-system but urchins in barrens are in a constant state of starvation, continually expanding the barren area by eating every newly settled kelp plant before the kelp has a chance to grow. These urchins are of no value to fishermen or predators because they are undernourished, small and often diseased.

To bring back kelp forests the urchins were removed and kelp began to manifest itself quickly since the plants often grow to two feet

per day. Within a few years, many of the aspects of a mature kelp forest have returned, including the provision of food for fish and greater support for urchin predators--birds, fish crabs, lobsters, octopuses, sea stars and otters--which has helped to create more sustainable levels of urchins.



Phase 2 Proposed Restoration of a Subtidal Rocky Reef:

This restoration project would involve the placement of 70,300 tons of quarry rock at various points along a 69-acre of Palos Verdes coastline to re-create a rocky reef that was partially buried years ago by landslides. NOAA says the reef design is a product of work between biologists who focused on such elements as the varying heights of the reef and the channels between each section, and engineers who have ensured the project was feasible. Rocky reefs support hundreds of invertebrate species and over 100 fish species that maintain a healthy eco-system.

Opposition to the Reef:

Opposition to the proposed reef has been raised. In public hearings in 2011 and in 2017, including subsequent correspondence from others in the PV community (including the Trump Golf Course site), NOAA was criticized for a lack of public outreach and was urged to postpone the start of construction until more people can learn about the plan and comment on it. Officials at Heal the Bay would like to see scientific backing that an

NOAA - continued from page 4

artificial reef is the right project for the area in the first place.

Additional concern focused on the possibility that the reef could change the quality of the surf in the area or exacerbate coastal erosion. The largest issue is the fact that the reef will be built near soil that has been contaminated by toxic chemicals.

The Rancho Palos Verdes City Council, initially in favor of the rocky reef project, has changed its position and now opposes it. Since the project would be constructed within waters of the State of California, the city of RPV has no jurisdiction over its permitting or construction. Such jurisdiction resides with the California Lands Commission. However, the city has been aware of and monitored the project for several years.

The California Coastal Commission found this project consistent with the Coastal Act.

The RPV City Council sent correspondence addressed to Betty T. Yee, Chair of the California State Lands Commission, expressing opposition to the granting of a lease for the PV Reef Restoration Project. "The location of the proposed reef is only a short distance downcoast from the toe of the active Portuguese Bend Landslide. It is primarily the silt and sediment from this landslide that has covered the reef that this project seeks to restore. However, the proposed project will do nothing to stop or redirect this downcoast flow of silt and sediment, which will likely result in any restored reef being quickly covered before any self-sustaining fishing habitat can be re-established. Furthermore, we question the wisdom of re-establishing fishing habitat in such close proximity to the DDT-and PCB-laden sediments that lie not much further off our City's coastline."

NOAA Response:

With regard to silt and sediment covering the proposed reef, Dr. Witting explained that NOAA has spent 5 years monitoring the site to determine if reef structure would resist burial. Areas of the historic reef that were very low in profile (less than a meter in height) were the areas buried by the recent landslide and ongoing Portuguese Bend activity. Patches of the reef that were higher in relief (greater than 1 meter) have resisted burial and are still highly functional and productive fish habitats. NOAA's design is to increase the number of higher relief patches and based on observations of similar natural reef, NOAA does not expect them to be covered in silt and sediment.

DDT and PCBs near the White Point wastewater outfalls continue to be monitored by the EPA at minimum depths of 40 meters (131 feet) and maximum depths (areas of the highest levels of contaminants) of 50-70 meters (165-230 feet). The EPA does not monitor inshore sites (location of the proposed reef) because EPA has determined that inshore areas are not affected by the effluent of the wastewater discharges.

Dr. Witting expressed the view that NOAA's many years of research on the reef are designed solely to restore a healthy and diverse eco-system to the PV Shelf. NOAA is willing to listen to public concerns and postpone the project until such time as there is consensus for its construction.

Notes

**Sample Agencies: US Fish and Wildlife Service, National Park Service, California Department of Fish and Wildlife, California State Parks, the California State Land Commission, City of Rancho Palos Verdes, US Army Corps of Engineers, California Coastal Commission, LA County Sanitation District and the South Coast Air Quality Control Board—LA region. Sample laws: Clean Water Act, Coastal Zone Management Act, Endangered Species Act, Marine Mammal Protection Act, Magnuson-Stevens Fishery Conservation and Management Act and the Rivers and Harbors Act.*



*The League of Women Voters of
Palos Verdes Peninsula/San Pedro
and
The Palos Verdes Peninsula Chamber of Commerce*

SAVE THE DATE

for the

Annual League Party

Honoring Our

Local Elected Officials

Friday, November 17, 2017

5:30 p.m. - 7:30 p.m.

*Pt. Vicente Interpretive Center
31501 Palos Verdes Drive West,
Rancho Palos Verdes*

Elected officials will be introduced at 6:30 p.m.

Additional information will be provided soon!
Questions? [LWV Palos Verdes Peninsula/San Pedro](#)



LEGISLATIVE CORNER

There is a lot going on in Washington D.C. these days, and the League is keeping track. Here is some legislation the League is tracking. For more information on the Legislation or how to voice your support, visit <http://lwv.org/our-work>

The League Supports Federal Legislation Making Voter Registration Easier:

On June 14, 2017, Senator Patrick Leahy (D-VT) and Representative Robert Brady (D-PA) introduced the Automatic Voter Registration Act of 2017. The League is proud to support legislation that enhances access for eligible voters in our elections and works to modernize our electoral system. This bill will improve the accuracy of voter records, cut down on costs, modernize outdated registration systems while supporting implementation in states across the country. The State of California has already enacted legislation to ease both registration and voting for its citizens and continues to look at ways to modernize its voting system, and ways to pay for it. The League is a leader in voter registration efforts across the country. Expanding voter registration has been a principal goal of the League since its founding in the wake of the passage in 1920 of the 19th Amendment, which gave women the right to vote. We are proud to see Congress embracing new technology that expands access to the ballot while still taking the necessary safeguards to secure personal information.

The League fully supports the Automatic Voter Registration Act of 2017 and urges all members of the U.S. Senate and House of Representatives to support this important legislation.

The League Supported Supreme Court Ruling Against Congressional Districts Based On Racial Lines:

The United States Supreme Court, now sitting with all 9 justices, has ruled that North Carolina lawmakers improperly used racial considerations to draw congressional districts following the 2010 Census. This decision is a major win in the battle for fair districts. **The League is proud to have filed an amicus brief with the Campaign Legal Center in this case, arguing against the State's use of racial considerations to avoid unfair representation.** Illegal gerrymanders have now been stuck down in 5 states: Alabama, Florida, Texas, Virginia and now North Carolina.

Redistricting is a top priority for Leagues around the country, fighting for fairly drawn district lines and enforceable criteria to guard against political and racial gerrymandering.

We will continue to demonstrate leadership on this key voting rights issue and hold our elected officials accountable when they attempt to influence the system for their own benefit.

California State Legislative Action

by Nancy Mahr, member of the LWV CA Legislative Committee

The state League's legislative priorities this year are:

1. The impact of changing federal policies on California in the areas of health care, immigration, environment and tax reform; and
2. Voting rights and election administration.

Our secondary tier of focus covers property tax reform, money in politics, education, housing, and environmental protection.

With these priorities, we have not considered AB 820, which our League specifically inquired about. However, we do accept requests from members to consider a specific bill that we may not have addressed. As AB 820 is a two-year bill, there is time to give it consideration. I will forward LWVPVP's interest and concerns to our LWVCA Legislative Committee chair, Joanne Leavitt.

Happy 4th of July



POPOVERS IN PASADENA

**Featuring
Keynote
Speaker:**

Dan Schnur

Director Jesse M. Unruh
Institute of Politics, USC



July 29, 2017

Women's City Club

160 N. Oakland Ave., Pasadena

9:30 am to 2:00 pm

Parking lot entrance is at rear or east side of the WCC building on North Madison Ave, 1-1/2 blocks north of Colorado Blvd.

WORKSHOPS

Follow the Money: Implementing Measure H;
Voting Reimagined; TECH! Empower Yourself

Please send form and check payable to **LWV/LAC**

Call for info: 310-479-7482

Mail to **LWV/LAC Arrangements, Sandra Trutt, 1508 Greenfield Ave., #207, Los Angeles 90025**

League Name: _____

Name (s): _____

Reservations Deadline is July 25th # _____ @ \$40.00 Total Enclosed: \$ _____

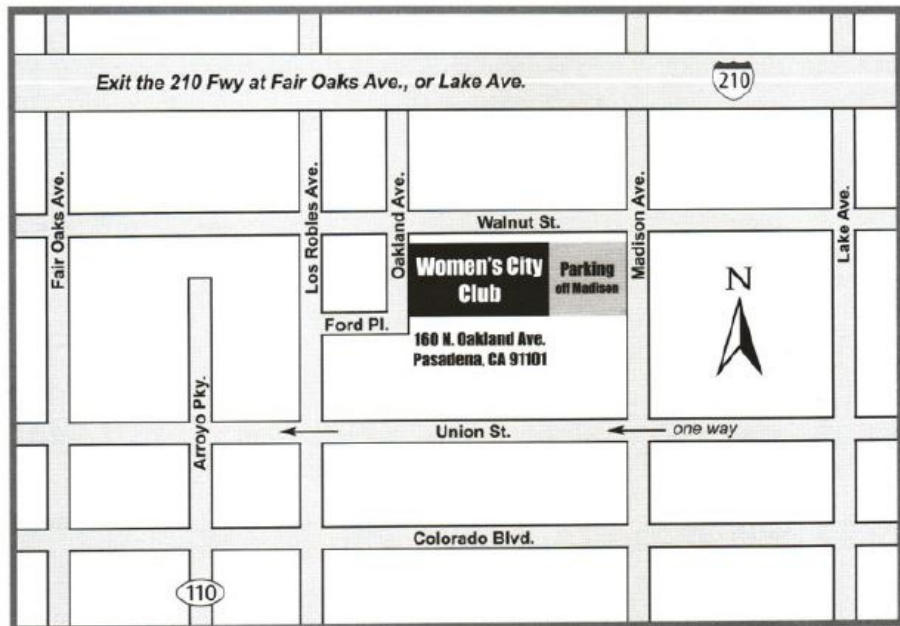
Chicken Picatta # _____ Veg/Gluten Free # _____ List Allergen _____

Please sign up for a morning workshop

1. Implementing
Measure H# _____

2. Voting
Re-imagined # _____
9

3. Tech! Empower
Yourself # _____





Join The League!

WHO ARE OUR MEMBERS?

Membership in the League of Women Voters, the most respected and effective grassroots organization in the country, is open to all men and women who are registered voters.

Our members make a visible difference by serving as community leaders using their experience to create positive, lasting change in our communities.

HOW DO I JOIN?

Just fill out the membership form below and mail it to:

LWV PVP, PO Box 2933, Palos Verdes Peninsula, CA 90274.

Please make checks payable to *LWV PVP*

Membership Form

Name _____

Name(s) of additional member(s) in household _____

Address _____

City _____ Zip Code _____

Phone (home) _____ Phone (work/day/cell) _____

Email address _____

Amount enclosed \$ _____

\$80.00 one member

\$40.00 additional member in the same household.

Dues are tax deductible. LWV PVP is a 501(c)(3) organization.

LWV PVP Officers and Board Member Contact Information:

Co-Presidents:	Viola Iungerich	310-541-5092	violaiungerich@gmail.com
	Karen Buresh	310-544-8272	karen.buresh@primesourcepm.com
1st V.P. (Land Use)	Pat Rome	10-952-0533	pjwrome@yahoo.com
2nd V.P. (Voter Service)	Nancy Mahr	310-377-0735	nlmahr@verizon.net
Secretary	Nell Mirels	310-377-9468	hmirels@aol.com
Treasurer	Cindy Kondon	310- 541-3923	cynthiakondon@icloud.com
Director at Large	Arlene Block	310-541-7176	goarlene@cox.net
Membership	Janet Macleod	310-833-1376	jmacle43@cox.net
Education	Pat Colby	310-514-8886	pacolby@gmail.com
Director	Linda Herman	310-541-3373	lhermanpg@cox.net
Co-Membership	Peggy Pages	310-831-5096	
Voter Editor (off board)	Mary Ellen Barnes	310-833-8083	mebarnes@aol.com
Publicity (off board)	Julie Craemer	310-378-1941	rcraemer@aol.com

