



LEAGUE OF WOMEN VOTERS
OF NORTH PINELLAS COUNTY



Making Democracy Work

THE VOTER

September 2016

The League of Women Voters is a nonpartisan political organization, that encourages informed and active participation in government, works to increase understanding of major public policy issues, and influences public policy through education and advocacy.

**Join us for cocktails and conversation
with *Jeff Klinkenberg***

**sponsored by the
LEAGUE OF WOMEN VOTERS
OF NORTH PINELLAS COUNTY**

Tuesday, Sept 20 5pm to 7pm



**Jeff Klinkenberg,
author, columnist,
and native Floridian
will delight us with tales and
adventures of real Florida.**

**Reservations: \$15 in advance; \$20 at the door
(Includes small plate buffet and cash bar)**

**Contact Ashley Pimley: ashley7276928450@gmail.com
or call Judy Ramsey at 727-504-8922**

***Books will be available
for sale & signing***



**Tapping the Vine
Wine Bar and Bistro**

**737 Main St. #100
Safety Harbor FL 34695
727-330-7514**



In this issue:

**Pages 1, 3 Fall Mem-
ber Social**

**Page 2 President's
Message**

**Page 4 Assault on
Florida's State Parks**

**Page 5 School
Board Candidates
Forum 8/16/16**

Page 6 Voter Info

**Page 7 Upcoming
Events, Membership
form**

**Page 8 Nonpartisan-
ship Policy**

**Page 9 International
Relations**

**Page 10 Volunteer
Opportunities**

**Page 11 Board of Di-
rectors Information**

Wear on August 30th



Please see page 3 about this event plus registration form.

President's Message

During elections, an important responsibility of the LWV is to observe that the canvassing process is carried out fairly and equitably. The following four paragraphs are taken from the source: Bay New 9 2016 Voting Guide, accessed 7.28.16

In Florida, the canvassing board for a particular city or county has very specific duties that are outlined in state statutes. Those duties include:

- Tabulating and submitting the results of absentee and early voting to the Department of State;
- Correcting any voting errors that may occur with early and absentee voting and re-tabulate the results;
- Implementing mandatory recounts of votes on candidate elections or legislation if the vote in question is decided by one-half of a percent or less in county or local elections.

It's important to note that the power to order recounts in federal, state, and multicounty elections rests with the Secretary of State. Our Secretary of State is Ken Detzner. In Florida, the canvassing board of a particular county includes the Supervisor of Elections, in Pinellas that would be Deborah Clark, a county judge who serves as the chair of the board, and the chair of a county's board of commissioners. From time to time, others are required to serve on the board, usually when someone who would normally serve is involved in a campaign or running for office.

The 2000 presidential election provided arguably the most memorable example of how the work of canvassing boards can influence even nationwide elections. You may recall that in 2000, George W. Bush narrowly defeated Al Gore in the popular vote in Florida, but Gore contested those results. Specifically, he challenged then-Florida Secretary of State Katherine Harris's decision to disregard manual recounts by canvassing boards in four counties in order to certify Bush the winner in Florida by a deadline mandated by Florida statute.

The Florida Supreme Court ruled that the manual recounts had to be included in the results, and Harris had to wait another 12 days past the deadline before she could certify the results. Bush then appealed that decision to the U.S. Supreme Court, which first requested clarification from the lower court on details regarding its decision, and then ruled in favor of Bush, citing "considerable uncertainty" in the reasoning behind the Florida Supreme Court's decision.

Our League responsibility is to act as observers of the canvassing process; local members are encouraged to volunteer; it could be one, two, or more observers. We are the eyes looking out for the rights of the voters. At our Pinellas County Supervisor of Elections office, Deborah Clark, the SOE, an appointed judge, and others sit around a large board table and review individual ballots to determine the intent of the voter, if in question, among other things. They are assisted by Julie Marcus, the deputy SOE. We sit in a room behind a glass wall to observe their actions. We can hear them. We do not, however, interfere or attempt to converse with them. If anything appears amiss, a League member would make notes of date, time, and event and share this with the local League president who will then share the concern with the SOE. Jason Latimer, the Communications Director, will often join the observers to educate and inform. He may also offer to take you on a tour of the facilities. I recommend that you do this. This is a wonderful learning experience!

The following dates are available for observation:

Monday, August 22 – 10 am

Tuesday, August 23 – 10 am

Wednesday, August 24 – 10 am

Please inform me about your plans (Karen.karinja@gmail.com/214.929.8984).

LET'S GET TOGETHER!

Dear Members,

Just a friendly reminder that our chapter's first ever **Fall Member Social** is fast approaching. The date is Tuesday, September 20, 2016, from 5:00 pm - 7:00 pm at Tapping the Vine Wine Bar and Bistro, located at 737 Main St. #100, Safety Harbor FL 34695.

Along with a small plate buffet, including dessert, there will be a cash bar available for your enjoyment.

There will be time for "cocktails and conversation" with members, friends, and invited guests. The highlight of the evening will be our special guest speaker, **Jeff Klinkenberg**, author and long-time contributor to the *Tampa Bay Times*. He will have some of his books for sale and signing. Jeff will also entertain us with some short stories and tall tales about life in Florida during the good old days.

Reservations are \$15.00 in advance and \$20.00 at the door. For more information, please see attached flyer. A reservation slip is included below to mail in with your check or money order.

RESERVATION FOR FALL MEMBER SOCIAL ON SEPTEMBER 20, 2016

Name _____ Phone _____

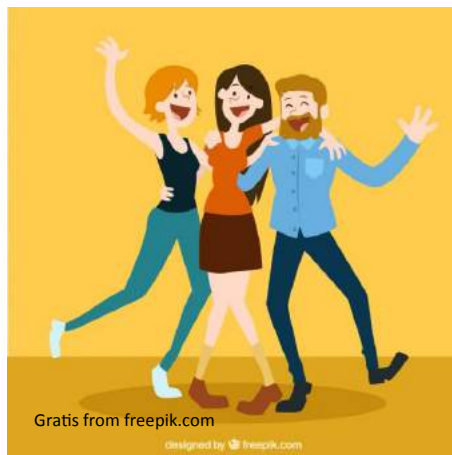
Guest(s) _____

Reservation = \$15.00 Amount of Check Enclosed _____
(Please make check payable to LWVNPC)

Mail to: LWVNPC, P.O. Box 6833, Clearwater FL 33758 by SEPTEMBER 13.

Seating is limited, so please send in your check now to secure your reservation.

Make sure to mark the date, **Tuesday, September 20**, on your calendar and join us for a very special, enjoyable evening at our Fall Member Social. And don't forget to bring a guest!



...and see next page
for the October
event

COMING IN OCTOBER:

Please join us on Saturday, October 1, to learn about the threats facing Florida's state park system, as presented by Mr. Jono Miller, and learn what you can do to protect and preserve our fragile Florida landscape. Admission is free.

Assault on Florida's State Parks

**Saturday, Oct.1 1pm to 3pm
Brooker Creek Preserve**



Jono Miller



Guest speaker, Jono Miller, noted environmentalist, will join us to explore the multi-pronged assault on our state parks.

He will touch upon some of the threats our parks are facing: Cattle grazing, hunting, timbering, and legislative underfunding of the entire park system.

Sponsored by



Hosted by



**Brooker Creek Preserve
Environmental Education Center
3940 Keystone Rd.
Tarpon Springs, FL 34688**

For more information call: 727-453-6800

The League of Women Voters of North Pinellas County is pleased to present noted environmental activist Jono Miller's Power-Point presentation "Assault on Florida's State Parks" on Saturday, October 1, 2016, from 1:00 pm - 3:00 pm at Brooker Creek Preserve's Environmental Education Center, 3940 Keystone Rd, Tarpon Springs FL 34688. It is being hosted by Friends of Brooker Creek.

Mr. Miller will address some of the threats our state parks are facing through privatization, currently being considered by our Florida State Legislature. He has been interested and involved in Florida's environmental issues for nearly forty years. Mr. Miller is retired from teaching and directing the Environmental Studies Program at New College of Florida, which has allowed him to focus on protecting our state park system.

SCHOOL BOARD CANDIDATES FORUM

St. Petersburg College, Tarpon Springs Campus

Tuesday, August 16, 2016

LWVNPC sponsored a highly engaged 2016 Pinellas County School Board Candidates' Forum. The event occurred on the Tarpon Springs campus of St. Petersburg College in the Fine Arts Building on August 16 from 7-9. The education committee, under the direction of Pona Piekarski, planned and executed the well-run event. Anne Decker moderated the 8-panel question and answer format. The audience participated by supplying the questions. Delia Miller and Mary Rao maintained perfect timing throughout the two hour event. League greeters included Joy Comstock, Donna Sharpless, Judy Ramsey, and Sue Rishworth.



Pona Piekarski
Education Chair



Anne Decker
Moderator



The District 1 At-Large candidates included Bill Dudley, Joanne Lentino, and Matt Stewart (Robert Beal was a no-show.) School Board At-Large candidates must reside in Pinellas County at the time of qualifying and must maintain residency in the county throughout their terms of office. School Board Single-Member candidates must reside in the district for which they are qualifying and must maintain residency in that district throughout their terms of office. District 4 candidates included Eileen Long, Ken

Peluso, and District 5 candidates included Carol Cook, Michael Petrucelli and Eliseo Santana.

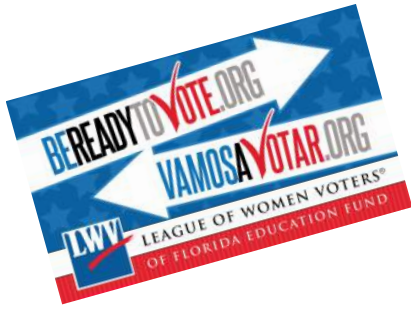
Questions covered such topics as charter schools, gun carry, Marzano evaluation model, fundamental schools, and others.



All North Pinellas County League members have a right to be proud of the quality of work demonstrated by our local league.

LWVNPC President Karen Karinja opened and closed the meeting.

REGISTERING VOTERS



St. Petersburg College
August 16, 2016



Thanks, Donna and Joy!

LWVNPC registered students on the Drew Street campus of St. Petersburg College on Tuesday, August 16, 2016. Students were asked to participate in a survey of millennials regarding their views on voting, primaries, and types of primaries. Pictured are Donna Sharpless, Membership Director, and Joy Comstock, Publicity Director



IT'S HERE! IT'S ON THE WEB! TELL EVERYONE ABOUT IT!!!

Rectangular Snip
**Welcome to the
Pinellas County
Voters Guide**

Go to: <https://vote.lwvspa.org/>

Click on the menu on the top of the page for the following information:

2016 Elections: Candidates Qualifying for 2016 Elections, Nov. 8th Pinellas County General Election, March 15th Municipal Elections & Presidential Primary, Precincts by District & Municipality, Voting tips for students

Federal: Races for Federal Offices, Information on U.S. Government

State: State Offices Up for 2016 Election, Information on State Government

County: Pinellas County Offices Up for 2016 Election, Information on Pinellas County Government

Courts: Judge seats Up for 2016 Election, Information on Florida Courts

Ballot Initiatives/Amendments : Ballot Initiatives/Amendments Up for 2016 Election , Information on Ballot Initiatives/Amendments

Register to Vote; Register to Vote information



**Upcoming Voter Registrations
& Candidate Forums:**

Voter Registration at Ridgecrest Elementary School

1901 119th Street, North Largo, FL

Read & Feed Back to School Night

----- In the School Library -----

Dunedin Mayoral and Council Members

Sponsored by the Dunedin Council of Elections

Friday, October 21, 2016 at 7 a.m.

Breakfast Meeting, Dunedin Golf Club

1050 Palm Blvd, Dunedin, FL 34698



**NATIONAL VOTER
REGISTRATION DAY
September 27, 2016**

To help with Voter Registration, contact
Karen Karinja at Karen.karinja@gmail.com or
@ 214-929-8984

FYI: School referendum Tuesday, November 8, 2016

APPROVAL OF CONTINUATION OF ONE-HALF MILL AD VALOREM TAX FOR SCHOOL DISTRICT OPERATINGEXPENSES. See <http://www.citizensforpinellaschools.com>

League of Women Voters of North Pinellas County

NAME: _____

ADDRESS: _____

CITY: _____ STATE: _____ ZIP: _____

PHONE: _____ EMAIL: _____

NEW MEMBER? PREVIOUS MEMBER? WHERE?

Annual membership is \$55. Household memberships are \$85 (2 people). Student membership is \$30. Cornerstone membership is \$110. Household Cornerstone is \$140. After LWV membership for 50 years, dues are waived.

Dues are payable to the League of Women Voters of North Pinellas County on or before May 1 of each year.

Please mail the membership application & payment to: LWVNPC, P. O. Box 6833,
Clearwater, FL 33758

FOR YOUR INFORMATION

LWVNPC

NONPARTISANSHIP POLICY

(Adopted June 21, 1991, amended October 9, 1992, endorsed June 11, 2003 and May, 2005, amended August 9, 2016)

League board members' experience equips them for public life both for elective and appointive office in government and for responsible positions in the private sector. The external contacts, skills, and experience that leaders bring to the League, in turn, benefit and enrich the League as an organization.

The LWVNPC board believes that board members should not only be allowed, but also encouraged, to seek and accept non League positions that confer these mutual benefits. At the same time, the board recognizes the necessity of imposing a few basic limitations on board members' political activity in order to protect the nonpartisan reputation of the League.

With this objective in mind, the LWVNPC board adopts the following guidelines:

1. Elected Office: The President and the Voter Service Chair shall not run for, nor hold, any elective office. Other board members shall not run for, nor hold, local elective office but may run for federal and state office, regardless of party designation, after consultation with the LWVNPC board and with the president of the affected local League. League members shall be considered candidates upon establishing campaign accounts.

Political Party Office: No member of the board shall serve in any elected position in a political party. Nor shall a board member hold office in another organization that supports or opposes political parties or candidates.

Campaign Contributions: The President and the Voter Service Chair may not attend fundraising events or make campaign contributions for candidates. Other board members may attend fundraising events and make campaign contributions for candidates at any level.

Political Campaigns: The President, and the Voter Service Chair shall not chair or administer fundraising or political campaigns, chair a campaign event or work in a significant way in the campaign of a candidate for office at any level. Other board members may not undertake such activities for candidates for local office but may do so for candidates for federal or state office after consultation with the president of the affected local League.

Relatives: The political activities of a spouse or relative of a board member should be considered separate and distinct from the activities of the board member.

Additional Clarification: Action chairs or board members holding sensitive portfolios may be subject to the same restrictions as the President and Voter Service Chair depending on how visible he/she is or to what extent the public identifies that person's partisan activity with those of the League.

Where a board member's activity affects the League's credibility as an effective nonpartisan political organization in the community, board members shall present questions about specific situations to the LWVNPC board and apply the foregoing policies or review them if they do not resolve the question. This policy shall be reviewed and readopted by the LWVNPC board at the beginning of each new biennium

If you have questions about this policy, please direct them to a member of the LWVNPC Board.

**Please note: You will be receiving a copy of the most recent
By-Laws in the near future.**

INTERNATIONAL RELATIONS

2016-2017

Lively discussions on timely global issues

Meetings are the first Monday of the month

2 p.m.

Pinellas Park Library at 52nd St. & 78th Ave.

Pinellas Park

This is a joint project of LWVSPA & LWVNPC

ALL are welcome for stimulating and informative gatherings
on global issues.



INTERNATIONAL RELATIONS SCHEDULE

October 3	The Future of Kurdistan	Richard Pope
November 7	Shifting Alliances in Mideast	Vollie Riskin
December 5	International Migration	Dwight Lawton
January 9	Cuba and the United States	Kay Lahdenpera
February 6	Climate Geopolitics	Joe LeBas
March 6	United Nations Post 2015	Linda McGeehan
April 3	Rise of Isis	Judy McSwine
May 1	Korean Choices	June Bedford

Questions? Email Judy McSwine at judymcswine@gmail.com

Find your place within our expanding League activities to focus your passions.

Choose an area of interest and contact the team leader

Advocacy issues such as

Health (Chair position is currently vacant.)

Education (Pona Piekarski, pona-piekarski@gmail.com, 816.289.9218)

Pinellas Poverty (Beth Hovind, bethse@gmail.com, 727.938.9809)

Environment and Transportation (Peggy Toohey, ptoohey2@tampabay.rr.com, 727.786.3457)

Constitutional Revision (Ellen Siegman, ellensiegman@gmail.com, 727.422.2879)

Stop Campus Carry (seeking team leader)



Judy McSwine moderating a candidates forum

Management areas such as

Membership (Donna Sharpless, dsharpless513@gmail.com, 727.286.7684)

Publicity/PR (seeking team leader, contact Karen Karinja)

Social Media (Facebook – Candy Ryan, candyryantpt@hotmail.com, 727.789.7157)

Technology (seeking team leader, contact Karen Karinja)

Development (Ashley Pimley, ashley7276928450@gmail.com, 727.692.8450)

Event Planning (Judy Ramsey, pookiejunejr@gmail.com, 727.504.8922)

Voter Service (Karen Karinja, Karen.karinja@gmail.com, 214.929.8984)

Informed and Active Citizen Participation

Visit us on the web at
www.lwvnorthpinellas.org

LWVNPC

P.O. Box 6833
Clearwater, FL 33758
Phone: 727-447-1564

President: Karen Karinja

1st Vice President: Vacant

2nd Vice President: Vacant

Secretary: Anne Decker

Treasurer: Marti Folwell

Directors

Joy Comstock

Rita Garvey

Judy McSwine

Ashley Pimley

Judy Ramsey

Lois Rogers-Watson

Donna Sharpless

Peggy Toohey

Webmaster: Kay Pitchon

We regret that Tamsen
Martin has had to resign as
Vice President due to
health & work issues.

Speak up for Democracy.

Join the League!