

*Voting
Made
Easier*

LWV LEAGUE OF WOMEN VOTERS®
OF GREATER PITTSBURGH

**your VOTE
is your VOICE**

© 2020 League of Women Voters of Greater Pittsburgh

Today we will talk about:

1. Why **VOTING** is a powerful way to respond to these challenging times!
2. How to **Understand Elections**
3. How to **Register to Vote**

The League of Women Voters of Greater Pittsburgh is a nonprofit 501 (C)(3) organization and is nonpartisan, neither supporting nor opposing candidates or political parties.

Why Vote?

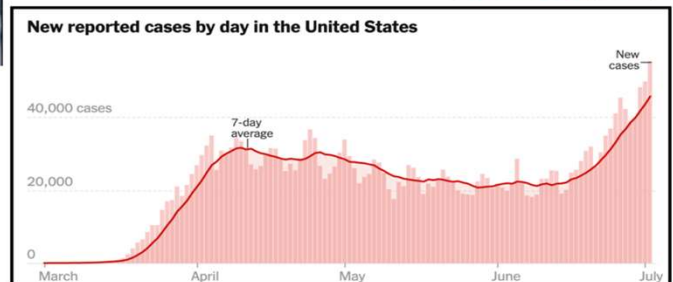
2020 Has Some Answers!



"I am asking for you to stay the course... We closed thousands of businesses... All of us are anxious to reopen ... Unfortunately, we cannot flip a switch and reopen the commonwealth."
- Pennsylvania Governor, Tom Wolf



"...we will allow gyms, ... bowling alleys, body art studios, barbers, cosmetologists, hair designers, nail care artists,... to reopen their doors this Friday."
- Georgia Governor, Brian P. Kemp

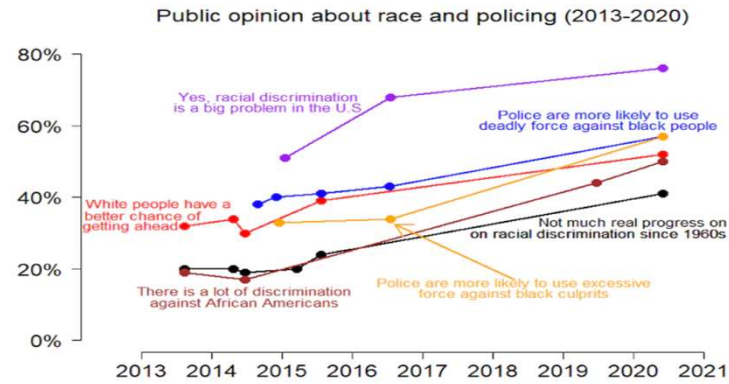


© 2020 League of Women Voters of Greater Pittsburgh

We have seen the largest **health crisis** in 100 years, causing *massive* changes in our lives.

- Different responses from elected officials at the national, state and local levels *have led to very different ways of responding to COVID-19.*
- The pandemic has impacted communities of color up to *five times more negatively* than other racial and ethnic groups. (Source: CDC, June 2020)
- The national health crisis has put a spotlight on old disagreements about *minimum wage, healthcare, the economy, the technology gap, and many other issues.*

Even
More
Answers



Graph: Michael Tesler. Sources: CBS News Polls; Monmouth University Polls. CBS results accessed from the Roper Center's ipoll databank.

© 2020 League of Women Voters of Greater Pittsburgh

We have witnessed **nationwide protests** of racial injustice and police brutality towards African Americans and people of color,

- and a *large visible shift in public opinion* in the US and even worldwide about the Black Lives Matter movement.

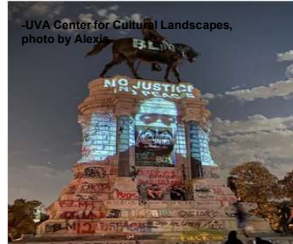
Americans
Have *Different*
Views About
the Pandemic,
the Protests—
and even about
DEMOCRACY



Many people in our country feel passionately about these issues...
...and we do not always agree!

But we can work together to solve these problems *if we protect the founding principles of our democracy:*

- Ensuring free and fair elections
- Active participation of informed citizens
- Protecting the human rights of all citizens
- Applying the Rule of Law equally to all citizens



© 2020 League of Women Voters of Greater Pittsburgh

Do you see the promise of democracy realized in America today?

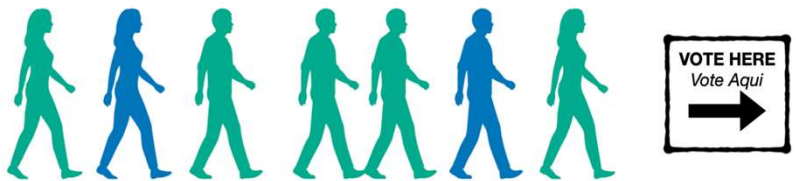
- Where do you find **reliable information** you can trust?
- Who do **you** trust?

What can you DO?

**WHO
Will Win
These Debates
About the
DIRECTION of
our Country?**



It will depend on WHO VOTES!



© 2020 League of Women Voters of Greater Pittsburgh

There are MORE eligible voters in the younger age group, but people 55 and older are much more likely to register and to vote in every election.

Guess who elected officials are listening to!

How do YOU Feel About Voting?



CHRIS ROCK ON VOTING:
"They don't want you to vote. If they did, we
wouldn't vote on a Tuesday. In November.
You ever throw a party on a Tuesday? No.
Because nobody would come." *New York*

© 2020 League of Women Voters of Greater Pittsburgh

Are you *skeptical* (unsure, questioning, open)?

Are you *cynical* (negative, no interest, closed)?

Some young people say, "Voting is not for me".

Do you feel that your vote doesn't matter or won't count?

You are not alone!

But don't let elected officials count on young people to be so cynical that they do not exercise their *right to vote!*

What Are the Issues YOU Care About?

NATIONAL

- Climate Change
- Systemic Racism
- Healthcare
- Gender Equality
- Immigration
- Judicial Appointments
- Taxes
- Student Loans
- Freedom of Speech
- Social Security

LOCAL & STATE

- Minimum Wage
- Community Police Relations
- Criminal Justice
- Animal Rights
- LGBTQ+ Issues
- Systemic Racism
- Gun Safety
- Pollution & Health
- Fair Housing
- Voting Rights

SCHOOL

- School Safety
- Bullying
- Cyberbullying
- Over-testing
- Curriculum Choice
- Police in Schools
- Social Media
- Bathrooms
- Access to Tech
- Suspension Policy
- People with Disabilities

© 2020 League of Women Voters of Greater Pittsburgh

What issues do you care about the most?

- *Take a minute to message a friend—does your friend care about the same issues you do?*

If you could ask the older people in your life (*parents, grandparents, aunts, uncles, teachers, neighbors*) what would they say they care most about?

- *Take the time to ask them.*

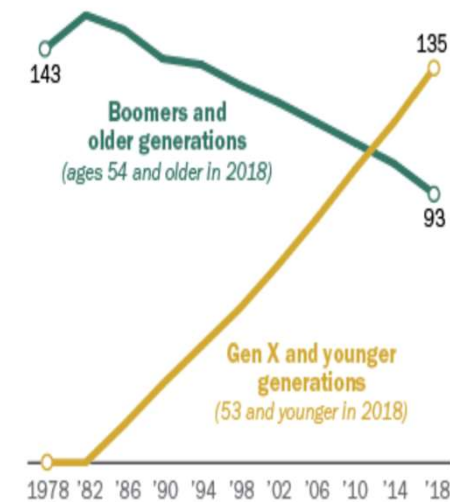
Are your issues the same as the issues the older people in your life care about?

Power in Numbers?

While there are more *eligible young citizens, they don't turn out to vote.*

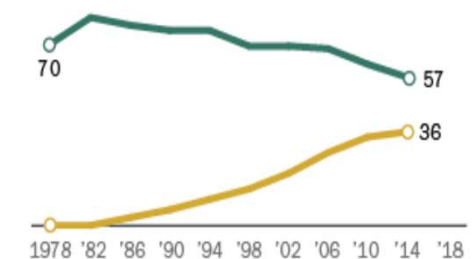
Gen Xers and younger generations are the clear majority of eligible voters ...

Eligible voters, in millions



... but cast 21 million fewer votes than older generations in 2014

Reported votes cast in midterm elections, in millions



Note: Eligible voters are U.S. citizens ages 18 and older.
Source: Pew Research Center analysis of the 1978-2014 Current Population Survey November Supplement (IPUMS) and April 2018 Current Population Survey.

PEW RESEARCH CENTER

© 2020 League of Women Voters of Greater Pittsburgh

Graph on the LEFT: Shows that while there are more *eligible young citizens, they don't turn out to vote.*

- So who votes more? (*Hint: Older people*)

Picture this in your mind:

Six (6) of your classmates are standing in front of you. They represent the young people who are eligible to vote in the US.

- How many of these young people *registered* to vote in the 2016 Presidential Election? (*If you said, "Half of them, 3 in 6" or 50%, you would be correct.*)
- How many *did* vote in 2016? (*If you said, "1 in 6" or 16%, you would be correct.*)
Only 1 in 6 of eligible young people voted in 2016!
- However, that number *doubled in 2018* when 2 in 6 or 30% of eligible young people voted.

That was better, but still not good enough if young people are to be fairly represented in our country!

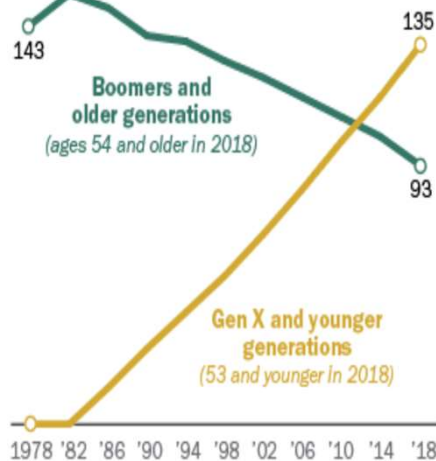
Power in Numbers!

Young people *DO* have the power to impact elections!

--IF They VOTE!

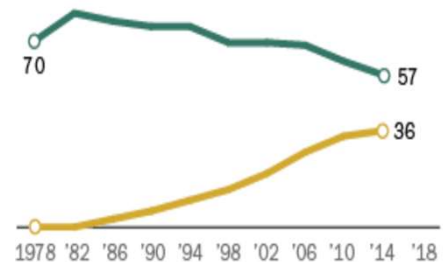
Gen Xers and younger generations are the clear majority of eligible voters ...

Eligible voters, in millions



... but cast 21 million fewer votes than older generations in 2014

Reported votes cast in midterm elections, in millions



Note: Eligible voters are U.S. citizens ages 18 and older.
Source: Pew Research Center analysis of the 1978-2014 Current Population Survey November Supplement (IPUMS) and April 2018 Current Population Survey.

PEW RESEARCH CENTER

© 2020 League of Women Voters of Greater Pittsburgh

Now, picture this in your mind;

Six (6) of the oldest people you know are lined up in front of you.

- All of them are registered voters and almost all of them (5 out of 6 or 84%) *vote in every election!* That is why older voters are called “Super Voters”.

The most important thing to remember:

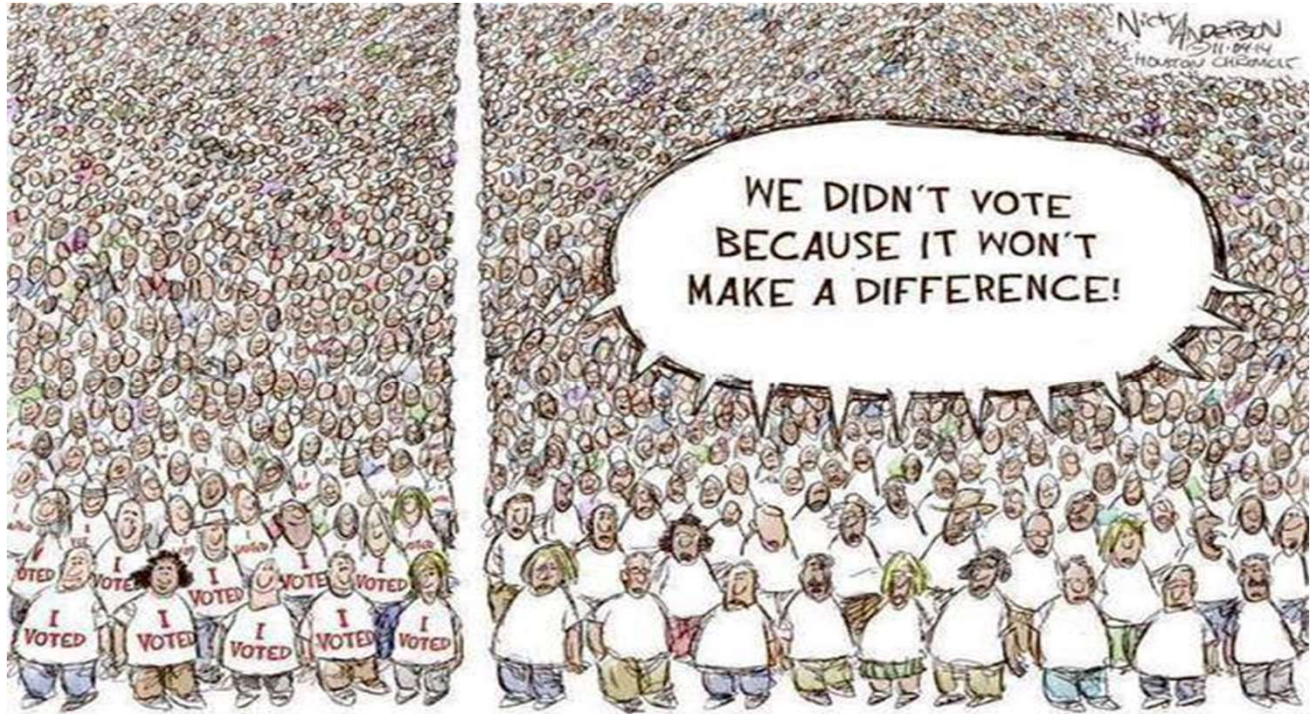
- If mostly older people are voting, which issues will elected officials care about? (*Older peoples' issues.*)

But wait! The **left-hand chart** highlights the **POWER IN NUMBERS:**

By the 2020 election, Gen Z and Millennials (18-38-year-olds), IF THEY VOTE, will continue to OUTNUMBER older voters!

If you exercise your right to vote, you will have the power to affect the 2020 election and potentially the direction of the country with the issues that are most important to you.

- You just need to register and then VOTE in every election.
And bring along your friends to register and vote, too!



Steven Colbert on Voting:

"Cynicism masquerades as wisdom, but it is the furthest thing from it. Because cynics don't learn anything. Because it is a self-imposed blindness: a rejection of the world because we are afraid it will hurt us or disappoint us. Cynics always say 'no'. But saying 'yes' begins things. Saying 'yes' is how things grow."

Cynical? No!

Instead, say 'yes'.

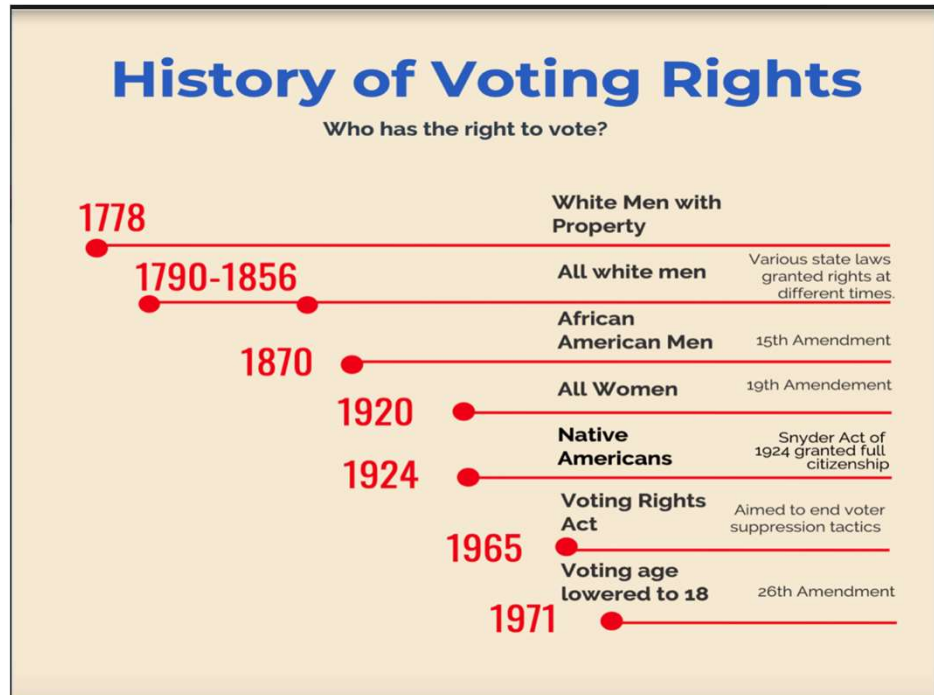
- *Continue to learn about your right and responsibility to vote.*

It's time to be a part of the change;

- **VOTE.**

But wait. Do you have friends who think that ONE VOTE won't make a difference...

*But It Made
an
ENORMOUS
DIFFERENCE
to these
People!*



© 2020 League of Women Voters of Greater Pittsburgh

Who fought for the **right to vote** throughout our nation's history?

- **White men** with property in 1788
- **African-American men** after the Civil War (*15th Amendment to the Constitution, 1870*)
- **All women** *not* until 1920 (*19th Amendment*)
- **Native Americans** granted full citizenship (*Snyder Act of 1924*)
- **Contrary to these amendments, poll taxes, literacy tests, and states' right to ratify** in some states prevented people of color from their right to vote. ***The Voting Rights Act of 1965 was passed to end racial discrimination in voting.***
- **18-year-olds (from 21 years old)** as a result of the Vietnam War (*26th Amendment in 1971*)

All citizens 18 years and older who have registered to vote are eligible to vote.

- **Naturalized citizens** may vote since they have fulfilled the requirements of US citizenship outlined in the *Immigration and Nationality Act of 1952 and 1965*.
- **Returning Citizens** are individuals in Pennsylvania convicted of a felony, who lost the right to vote while incarcerated but have voting rights restored following release from prison. They *may* need to **re-register** to be eligible to vote.

And to
These
People-

Young People's
Protests
Led to a
Constitutional
Amendment



*“Old enough for war,
but not old enough to vote!”*

© 2020 League of Women Voters of Greater Pittsburgh

In the late 1960's, because of the Vietnam War, many people (especially young people) who were not eligible to vote and therefore had no say in the direction of the country, were being drafted (by a birthday lottery) and sent to war.

- *“Old enough for war, but not old enough to vote!”*

So many citizens (and especially young people) **protested** and in 1971 through the 26th Amendment to the Constitution,

- ***the voting age changed from 21 to 18 years old.***

**When you turn 18 years old, will you exercise your right to vote...
or not?**

Barriers to "Free and Fair Elections"

Still Happening?



Angry Voters in Louisville
2020 Primary,

© 2020 League of Women Voters of Greater Pittsburgh

Suppressing the Vote: *Disenfranchisement means—denying the right to vote:*

- **Disenfranchisement of most women** until 1920 (19th Amendment) and some women of color until 1965 (Voting Rights Act).
- **Disenfranchisement of people of color**; men and women, *despite the 15th Amendment*. John Lewis and 600 civil rights marchers tried to cross the Edmund Pettus Bridge in Selma, Alabama in 1965. It's called "Bloody Sunday" because the peaceful marchers were attacked with billy clubs and tear gas, but the outrage led to the Voting Rights Act of 1965 ...and to a 55th Anniversary reenactment with thousands of marchers that happened in 2020.
- **Angry Voters in Kentucky 2020 Primary**--officials locked the doors at 6pm, opened them and then relocked them at 6:30pm, *when there was a court injunction for them to stay open until 9pm*. (There is an unwritten rule in many states that voters standing in line to vote when voting hours end, are permitted to vote.)
- In a **ballot referendum in Florida's 2020 Primary** a **60% supermajority** said "yes" to allow *ex-felons with some exceptions to become "returning citizens" permitted to vote*. **But in July 2020, the Florida Supreme Court** ruled for the State Legislature who had written a **new law to limit ex-felons' right to vote**—so that after release from jail and before ex-felons could re-register to vote, they had to pay all outstanding fines and fees. *Many ex-felons were not even aware of outstanding fines and fees or how to pay them*. **LeBron James has set up a foundation to help "returning citizens"!**

**Why Should
YOU
PARTICIPATE
in this
Democracy?**

**Voting is Essential in a
Democracy**

Our government affects many parts of our lives *from schools and careers to health care to the environment*

Voting is an important right in our society

By voting, **you make your voice heard** on how you think your government should operate



© 2020 League of Women Voters of Greater Pittsburgh 5

YOU MATTER. YOUR VOTE MATTERS. YOUR VOICE MATTERS.

Voting makes your voice heard in one way that affects **real change**--by resulting in the policies and laws that *affect us all*.

One example is **Municipal Elections**. When citizens vote in these elections:

- They choose the local, city, and county government officials who make the laws and policies that affect them most; ***their mayors (who hire chiefs of police), city councils, district attorneys, sheriffs, school boards, magistrates, and judges.***
- ***Elected Officials are government workers—who work for us!***
- The officials elected in Local and Municipal Elections, ***which will affect YOU the most,*** can be very close, where every single vote can make a difference.

Choose to have the POWER to make a difference in 2020. VOTE!

What Does Government Do for YOU?



Stop and think about all the ways government--through laws and regulations--helps citizens:

- PRODUCT SAFETY (*safe toys, safe make-up*),
- FOOD SAFETY (*inspections at restaurants, recalls of food that cause illness*),
- PHYSICAL SAFETY (*seat belts, car seats for kids, speed limits*),
- WORKERS SAFETY (*must be 16-years-old to work, hours of work limited*),
- ENVIRONMENTAL SAFETY (*laws for safe air and water*).

© 2020 League of Women Voters of Greater Pittsburgh

Why would people want to work in government?

- (*To make a change, to make a positive difference in citizens' lives.*)

Do you know anyone who works in government?

- (*People whose jobs depend on taxes, like teachers in public schools, fire fighters, city and county officials, employees of Social Security and the FBI.*)

Which government officials have the *most power* to affect your life?

- (*School Board members, magistrates, state officials who set minimum wage, others?*)

Do you agree that “government” gets a bad rap?

- (*Why or why not?*)

Think about the Founding Fathers (*anyone see Hamilton?*)-- think about our great American Presidents like FDR and Eisenhower.

Who are *your* American heroes? (John McCain, Clara Barton, Neil Armstrong, Harriet Tubman, Martin Luther King , John Lewis.)

They believed we could work together to form a “more perfect union”.

**As citizens, are we living up to their vision for America?
--or to ours?**

*Elected
Officials
Have a
Huge Impact
on Your
Community*



© 2020 League of Women Voters of Greater Pittsburgh

Our ELECTED officials have a huge role in leading us through the 2020 challenges and reacting to these enormous shifts. The way they govern *directly* impacts our communities (and our country).

What other laws and policies made by elected officials have a direct impact on your lives?

(Tax rates hard on families, policing in schools, minimum wage, healthcare, others?)

*Just a little
over HALF
of
US citizens
ELECT the
Officials Who
WORK
FOR US!*

*your VOTE
is your VOICE*

Citizens have the chance to choose the *direction* of their country *when they vote*.

- ***However, in the United States, only 55.7%* of voting-age citizens vote!*** *PEW Research Center, 2020

© 2020 League of Women Voters of Greater Pittsburgh

Citizens who vote are electing the representatives who make the policies that affect all of us.

Citizens have ***power*** when they participate in our democracy and ***vote in every election***.

We hope you will choose to make YOUR voice heard.

WHO Will Work for *Your Issues?*

Do You Choose a Political Party or NOT?



This Photo by Unknown Author is licensed under [CC BY-SA](#)

Two MAJOR parties in the US:

- **Democratic** and **Republican**

Two smaller parties in PA:

- **Green** and **Libertarian**
- PA has no “Independent” party

IMPORTANT: By Pennsylvania state law, only voters registered in ***one of the two major political parties may participate*** in the ***Closed Primary Elections***

© 2020 League of Women Voters of Greater Pittsburgh

A **political party** is an organized group of people who have the same ideas, or who see things the same way and who find candidates for elections who will represent those ideas and positions in government.

- When **registering to vote** a citizen may choose a party affiliation, but this is not required.
- *However, in PA Primary Elections, only voters enrolled in the **Republican Party** or the **Democratic Party** may vote to elect their nominees for the General Election.*
- Pennsylvania’s Primaries are **CLOSED** to registered voters who have not selected a major party affiliation *except if there is a ballot question, constitutional amendment, or special election.*

So if you want to help choose the candidates who will be on the General Election ballots, when you register to vote today, you should enroll in either of the two major political parties.

How Often Will You Vote?

Two*
Different Elections
Each Year

Primary Election
(was June 2, 2020)

General Presidential Election
(November 3, 2020)

- **Other parties**, besides the Republican and Democratic parties, like the Green and Libertarian *may* have candidates on the General Election ballot
- There is no “Independent” party in PA



© 2020 League of Women Voters of Greater Pittsburgh

There are ***two different elections*** every year:

- The **Primary Election** in the spring where Democrats and Republicans choose their candidates *for*
- the **General Election** in the fall, which can be either a Municipal or a Federal and State Election.

In General Elections:

- All eligible voters can vote for **ANY candidate**, regardless of their party affiliation, if any.
- If candidates from smaller parties win a place on the General Election Ballot, votes will be distributed *among all candidates, possibly lessening the votes for major party candidates.*



Two* Types of Elections

- **Municipal Elections (Odd Years)**
(Local, City, and County Officials, Magistrates, Judges)
- **Federal and State Elections (Even Years)**
(PA State Government, US Congressional and Presidential)

***Special Elections:** Held when an elected official can no longer serve, during General or Primary Elections, or on another designated day. *Everyone living in that official's district can vote.*

© 2020 League of Women Voters of Greater Pittsburgh

Every other year, there are ***different types of elections***:

Municipal Elections (Odd-numbered years)–

- Might include *local, city, and county officials*, like mayors, city council members, district attorneys, sheriffs, school boards, magistrates, and judges

Federal and State Elections (Even-numbered years) --

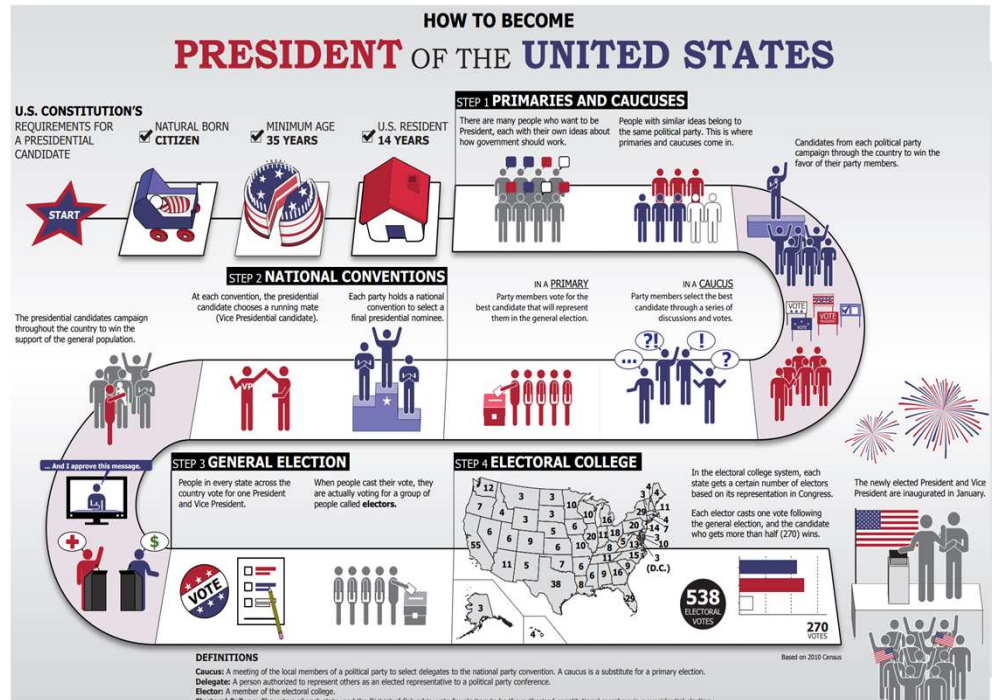
- *Congressional and Presidential* which include Senators and Representatives in Congress and Presidents
- *State* which includes State Senators and Representatives in PA government and other state officials, Governors and Lieutenant Governors

***Special Elections:** Held when an elected official can no longer serve. May be held during General or Primary Elections, or on another designated day. Everyone living in that official's district can vote.

The November 3, 2020 Presidential General Election is a Federal Election.
Are YOU an engaged and informed voter, NOW?

Electing a President-- Does Your Vote Count?

November 3, 2020
PRESIDENTIAL
General Election
is a
Federal Election.



© 2020 League of Women Voters of Greater Pittsburgh

How would you feel if we told you that the US President and Vice President are *not elected directly by citizens*, due to the Electoral College system created by the Constitution? *Discuss.*

- ***In every US election***, other than the Presidential Election, candidates are elected ***directly*** by the popular vote. (The candidate with the most votes wins.)
- Presidents and Vice Presidents are chosen by the **538 “electors”** who in turn have been chosen by their political parties.
- **Each state gets as many electors as it has Members of Congress (House and Senate), including three (3) for Washington DC.** (*The 2020 Census will determine how many US House of Representatives are assigned to each state, and guide how both congressional districts are drawn and how government dollars are distributed.*)
- **A presidential candidate must win 270 electoral college votes to win the presidency.**
- In 2016, candidate Hillary Clinton **won the popular vote by 2.1%** (2,868,686 votes) more than Donald Trump. **However, Trump won the Electoral College vote; 304 (Trump) to 227 (Clinton).**

Beginning in 1970, the League of Women Voters’ position has been to support the DIRECT election of the President by National Popular Vote (and to abolish the Electoral College system) as essential to representative government.

Are you ready
to
REGISTER
to **VOTE?**

Last Chance –
10.19.20



Jane Campbell/Shutterstock

© 2020 League of Women Voters of Greater Pittsburgh

Are you thinking– but I have no idea who I will vote for?

Just like when you buy a new phone a little research will help to be an informed voter–

Think about where you get your information—how do you verify information?

- *Checkout these Media-Bias and Election and Candidate Information sites (also in your handout):*
- <https://www.ontheissues.org>
- <http://votesmart.org>
- <https://www.snopes.com/>
- <https://www.politifact.com/>
- See Vote411.org [here](#)

HOW to Register to Vote

- Must be a **U.S. citizen**
- Must be **18 years old** on or by *the next election day*; November 3, 2020 General Election
- Must be a **PA resident** for 30 days prior to the next election
- Must have a **PennDOT ID** number, **PA Driver's License** number, **OR** the last four digits of your **Social Security Number**

© 2020 League of Women Voters of Greater Pittsburgh

CHOICE #1—Complete the **Online Form** if you have a PA Driver's License or PennDOT ID. (*Your signature will be on file.*)

- [Online Voter Registration Application](#)
- Follow the Online Instructions

OR

CHOICE #2—Use a **Printed Form**:

- [Printed Voter Registration Application](#)
- *Print the Blank Form*
- Follow the Instructions on Pages 25 and 26

Page 2
Use black ink

Pennsylvania Voter Registration Application

Print your name 1 Last name _____ Jr Sr R III IV (circle if applicable)
First name _____ Middle name or initial _____

Eligibility 2 Are you a citizen of the U.S.? Yes No
Will you be 18 years or older on or before election day? Yes No

Reason 3 New registration Change of name Change of address
 Change of party Federal or State employees registering in county of last residence

About you 4 Birth date _____ Sex M F Race (optional) _____
Phone _____ Email _____

Your address 5 Address (not P.O. Box) _____ Apt. number _____
City/Town _____ State PA Zip Code _____
Municipality _____ County _____
 I do not have a street address or permanent residence (see map on back)

The address where you receive mail 6 Same as above Address or P.O. Box _____
City/Town _____ State _____ Zip Code _____

Identification 7 PA driver's license or PennDOT ID card number _____
Last four digits of your Social Security number _____
 I do not have a PA driver's license or a PennDOT ID card or a Social Security number.

Political party 8 Democratic Republican Other: _____ None
 I require help to vote. I need this kind of assistance: _____
My preferred language: _____

If your name or address has changed 9 Name on previous registration _____
Full previous address and county _____
PA Voter No. (if available) _____ Year _____

Declaration 10 I declare that:
- I am a United States citizen and will have been a citizen for at least one month on the day of the next election.
- I will be at least 18 years old on the day of the next election.
- I will have lived at the same address in Section 5 for at least 30 days before the election.
- I am legally qualified to vote.
I affirm that this information is true, understood, and if the information is not true, I can be convicted of perjury, and that I am at least 18 years old on or before the election.
Signature or mark _____
Print name _____
Today's date _____

Help with this form 11 Name of assistant _____
Address _____
Phone _____ Signature of assistant _____

Let's Register to Vote!

- **PLEASE PRINT CLEARLY; Use black ink**
- **BIRTH DATE** is required (**18 years old on or by next election day**).
- Phone number and email are not required but are recommended if the County Election Office needs to contact you.
- County is required.
- Complete all checked boxes (like “Eligibility” and “Reason”).
- Only **one form of ID** is required: EITHER your Driver’s License or PennDot ID **OR** Last 4 digits of your Social Security Number.
- In the **BOX**, write your **SIGNATURE**,
- Clearly **PRINT YOUR NAME** below,
- Write **TODAY’S DATE** below that.

© 2020 League of Women Voters of Greater Pittsburgh

CHOICE #2 Instructions:

- Complete the shaded areas

A final word about political parties:

- Many new voters are confused about whether to choose a political party or not.
- After researching this further, you can make this decision at any time, by going to [VotesPA.com](https://www.votespa.com) to add or change your party affiliation [here](https://www.votespa.com).
- Remember that only voters registered in either of the two major parties—**Democratic or Republican**— may vote in PA’s Closed Primary Elections to elect their nominees for the General Election.
- *All registered voters* may vote on a ballot question, constitutional amendment or special election.

Page 3
Use black ink

Pennsylvania Voter Registration Application

Print your name 1 Last name _____ Jr Sr III IV (circle if applicable)
First name _____ Middle name or initial _____

Eligibility 2 Are you a citizen of the U.S.? Yes No
Will you be 18 years or older on or before election day? Yes No

Reason 3 New registration Change of name Change of address
 Change of party Federal or State employee registering in county of last residence

About you 4 Birth date _____ Sex M F Race (optional) _____
Phone _____ Email _____

Your address 5 Address (not P.O. Box) _____ Apt. number _____
City/Town _____ State PA Zip Code _____
Municipality _____ County _____
 I do not have a street address or permanent residence (see map on back)

The address where you receive mail 6 Same as above Address or P.O. Box _____
City/Town _____ State _____ Zip Code _____

Identification 7 PA driver's license or PennDOT ID card number _____
Last four digits of your Social Security number _____
 I do not have a PA driver's license or a PennDOT ID card or a Social Security number.

Political party 8 Democratic Republican Other: _____ None

Voting assistance 9 I require help to vote. I need this kind of assistance: _____
My preferred language: _____

If your name or address has changed 10 Name on previous registration _____
Full previous address and county _____
PA Voter No. (if available) _____ Year _____

Declaration 11 I declare that:
• I am a United States citizen and will have been a citizen for at least one month on the day of the next election.
• I will be at least 18 years old on the day of the next election.
• I will have lived at the same address in Section 5 for at least 30 days before the election.
• I am legally qualified to vote.
I affirm that the information I have provided is true and I understand that this declaration is the same as an affidavit, and if the information is not true, I can be convicted of perjury and fined up to \$15,000, jailed for up to three years, or both.
Signature or mark _____
Print name _____
Today's date _____

Help with this form 12 Name of assistant _____
Address _____
Phone _____ Signature of assistant _____

MAIL your application to the County Election Office*

Allegheny County Elections Office
542 Forbes Avenue
Ste 609
Pittsburgh, PA 15219-2913

Don't forget the stamp!

- **Put November 3, 2020 in your phone calendar NOW!**
- Put November 1st in your phone calendar with a reminder to:
Make a Plan to Vote—ID? Work? Travel to polling place? Confirm registration?

© 2020 League of Women Voters of Greater Pittsburgh

CHOICE #2 Instructions (Continued):

Once you have completed the Printed Form,

- **MAIL your application** to the County Election Office*
Allegheny County Elections Office
542 Forbes Avenue
Ste 609
Pittsburgh, PA 15219-2913

Don't forget the stamp!

*Note to voters NOT in Allegheny County: Your [county election office](#) can be found here.

Put the Presidential General Election, November 3, 2020 in your phone calendar NOW!

Last day to register to vote is October 19, 2020.

SEE REVERSE SIDE FOR EASY OPENING INSTRUCTIONS

Voter Registration ENVELOPE and CARD

Allegheny County Elections Division
609 County Office Building
542 Forbes Ave
Pittsburgh, PA 15219-2953
RETURN SERVICE REQUESTED



1725 BARR AVE
PITTSBURGH, PA 15205

Attached below is your Certification of Voter Registration. Please carefully detach, sign and keep for your reference. Please notify the Election Commission within 10 days from the date it was mailed if any information on the certificate is incorrect; otherwise, the information shall be deemed correct for voter registration purposes.

Barcode

Allegheny County, Pennsylvania Certificate of Voter Registration	
1725 BARR AVE PITTSBURGH, PA 15205 Municipality: CRAFTON Ward: Precinct: CRAFTON 01 02	Voter ID: [REDACTED] DCB: DEMOCRATIC Enrollment Date: 9/1/1986

Signature or Mark of Elector

Valid 10 days after: 10/24/2019 or upon receipt by the voter

THIS CARD IS THE CERTIFICATE OF VOTER REGISTRATION OF YOUR NEW ELECTION DISTRICT, DIVISION OR PRECINCT. Voters who are voting for the first time in an election district must show a form of identification. THIS CARD CAN BE USED AS THAT FIRST TIME PROOF OF IDENTIFICATION. For a list of other acceptable forms of photo and non-photo identification for first time voters, please call your county board of elections, visit www.dos.pa.gov, or call toll free at 1-877-VOTESPA.

Polling Place:
CRAFTON ELEMENTARY SCHOOL
1874 CRAFTON BLVD
PITTSBURGH, PA 15205

© 2020 League of Women Voters of Greater Pittsburgh

This official looking **ENVELOPE** will hold your Voter Registration ID Card.

After you send in your Voter Registration Application, and *after you turn 18 years old*, it may take **3 weeks** before you receive this envelope in the mail with your **VOTER REGISTRATION ID CARD** inside.

Remember to look for it!

If you don't receive your ID card after that time, contact your [county election office](#). (The Allegheny County Elections Office can be reached at 412-350-4500.)

This sample **VOTER REGISTRATION CARD**;

- shows your address, which political party you have chosen, if any (in capitals), and your polling place.

CONGRATULATIONS! You are now a REGISTERED VOTER!

Another
Choice
During a
Pandemic

MAIL-IN or
ABSENTEE
BALLOT
"No excuse
needed"

Where will you be on November 3, 2020?

If you will be ABSENT from your Home Polling Place on Election Day:

- First, **apply** for your Mail-in or Absentee Ballot online or with a paper form as **early as possible*** and **no later than 5pm on October 27, 2020.**
- **As soon as you receive your ballot in the mail*, follow the directions:** mark your ballot, place it in the secrecy envelope and seal it, place the secrecy envelope in the self-addressed, stamped envelope provided, **sign the declaration, and mail it.**
- Your Mail-in or Absentee Ballot must be **received** at the County Election Office **by 8pm on Election Day—November 3, 2020**

***APPLICATIONS NOW BEING ACCEPTED FOR
A MAIL-IN OR ABSENTEE BALLOT!**

***You should receive your ballot about 30 days before the election.**

© 2020 League of Women Voters of Greater Pittsburgh

There may be many reasons that you *may not* be able to vote in person on Election Day at your home polling place, like:

- Illness, disability, or temporarily living elsewhere (post-high school education, work, or military)
- Risks for older voters and persons with pre-existing conditions due to the pandemic.

For the reasons above or because it is simply *your preference*, *no reason is needed* to request a no-excuse **Mail-in ballot** in Pennsylvania (Act 77).

***APPLICATIONS NOW BEING ACCEPTED FOR A MAIL-IN OR ABSENTEE BALLOT!**

- Apply for a Mail-in or Absentee Ballot [here](#) at VotesPA.com
- Check the box at the bottom of the application to be added to the **Annual Mail-in or Absentee Ballot request list** [here](#).

Note to those who currently are or may be joining the Military:

The rules for voting are different and specific to members of the military. Information will be available to you from the military and [here](#).

The INTEGRITY of Your Vote

In-Person Voting



ONE VOTER, ONE VOTE

*"The PA Dept. of State directed all PA counties to select **new voting systems with voter-verifiable paper ballots**...to ensure that PA voters are voting on the most **secure, accessible and auditable** equipment available." (VotesPA.com)*

© 2020 League of Women Voters of Greater Pittsburgh

Voting *IN-PERSON* at your polling place *in Allegheny County*:

*Allegheny County's **new voting system** consists of a paper ballot, or a ballot-marking machine and ballot card, and a ballot scanning machine, at each polling place.*

- As you check-in with election officials, your voter registration status will be verified. (Proof of ID for first-time voters or the first-time in a polling place [here](#).)
- You may either mark a paper ballot by hand, or use a ballot-marking machine and ballot card.
- After making your choices, you will insert your ballot into the *ballot scanning machine* and a message will **confirm** that your vote **has been cast**.

The
INTEGRITY
of Your
Vote
(continued)

Mail-in Voting

ONE VOTER, ONE VOTE

Election Security is a system designed to ensure that each voter may cast only **their own, single vote** whether in-person or by mail

© 2020 League of Women Voters of Greater Pittsburgh

Voting with either a **MAIL-IN** or **ABSENTEE** Ballot:

- A **unique bar code** is created and linked to your voter registration record. The correct ballot for your precinct is sent to the address on your Mail-in or Absentee ballot *application*.
- The unique bar code ensures that you may only vote once even if you receive an *extra ballot* in error. *Only one vote per unique bar code can be cast.*
- You will receive a **confirming email** that your vote has been counted. You may also check your Mail-in or Absentee ballot status online [here](#).

Need More Reliable Voter Information?

What about Media Bias?



VotesPA.com

Register to vote, apply for a Mail-in ballot, change your address, your party affiliation, or find your registration status, your polling place, and more

Vote411.org

A few weeks before an election, view the candidates on your ballot and their positions on issues

*League of Women Voters of Greater Pittsburgh:
"Empowering Voters, Defending Democracy"*

© 2020 League of Women Voters of Greater Pittsburgh

VotesPA.com: [here](#)

- Where you can register to vote, change your address, your party affiliation, or find your registration status, your polling place, and more.

Vote411.org: [here](#)

- At this *League of Women Voters* website, a few weeks before every election, type in your address and view the candidates who will be on your ballot, and more. If candidates have answered three questions, you will be able to compare their answers side-by-side.

For Even More Voter Information via the LWVGP Website Homepage:

- See "Why Vote" [here](#).
- See "Voter Registration" [here](#).
- See "Mail-in and Absentee Voting" [here](#).

*League of Women Voters of Greater Pittsburgh:
"Empowering Voters, Defending Democracy"*