

League of
Women
Voters of
Greater
Pittsburgh



Empowering Voters.
Defending Democracy.

© 2020 League of Women Voters of Greater Pittsburgh

This is an ONLINE LESSON called, “VOTING MADE EASY” from the League of Women Voters of Greater Pittsburgh.

1, Nonpartisan; this means we will give you information about our democracy, our political system/elected officials and how to vote. We will be fair to all. We will tell you about the elected officials you can vote for, but we will never tell you WHO to vote for. *That is your decision.*

2. *Men* are members of the League of Women Voters, too!

3. In 1920, the 19th AMENDMENT to the CONSTITUTION finally gave ALL WOMEN the RIGHT to VOTE.

The League of Women Voters is celebrating its 100th birthday this year! It was created 100 year ago by the women who worked fearlessly to give women the right to vote.

League of
Women
Voters of
Greater
Pittsburgh



Empowering Voters.
Defending Democracy.

© 2020 League of Women Voters of Greater Pittsburgh

Our ONLINE LESSON will;

1. Help you UNDERSTAND more about our DEMOCRACY and about your RIGHT AND RESPONSIBILITY to REGISTER TO VOTE.
2. *Help you COMPLETE the VOTER REGISTRATION APPLICATION,
(Print Form on Page 33),
OR help you register to vote ONLINE (Link on Page 33).*
3. Motivate you to VOTE in the NEXT ELECTION and IN EVERY ELECTION!

"Empowering Voters. Defending Democracy."

Voting Made Easy

A Guide for Young and New Voters

League of Women Voters of Greater Pittsburgh
LWVpgh.org



© 2020 League of Women Voters of Greater Pittsburgh

1

Do you think voting and registering to vote is confusing or hard to do? This lesson, called “Voting Made Easy” will help.

First, let’s review CHANGES to VOTING RIGHTS from the time our country started.

1. Who were the FIRST citizens to vote? (WHITE MEN WITH PROPERTY)
2. Who were SECOND? (After the Civil War, AFRICAN-AMERICAN MEN got the right to vote with the 15th AMENDMENT.)
3. Who were THIRD? (In 1920, ALL WOMEN got the right to vote with the 19th AMENDMENT.)

Did you know that poll taxes and literacy tests were some of the ways people in power stopped black men and women from voting.

(The VOTING ACT of 1965 ended RACIAL DISCRIMINATION IN VOTING.)

4. What was the LAST change? (In 1971 the VOTING AGE CHANGED FROM 21- TO 18-YEARS OLD with the 26th AMENDMENT.)

Voting Made Easy

A Guide for Young and New Voters

League of Women Voters of Greater Pittsburgh
LWVpgh.org



http://www.nationalconcerns.com/page/articles.html/_/concerns/change-of-details-in-the-voter-id-card-r14

© 2020 League of Women Voters of Greater Pittsburgh

1

In the late 60's, because of the VIETNAM WAR, many people (especially young people) thought it was WRONG that 18-yr-olds who could not vote were being DRAFTED (like a lottery) to fight in a war.

"Old enough for war, but not old enough to vote".

So MANY citizens (and especially young people) PROTESTED and in 1971 the voting age changed to 18-years old.

THAT MEANS WHEN YOU TURN 18 you have the very ADULT RIGHT AND RESPONSIBILITY to REGISTER TO VOTE and then to VOTE IN EVERY ELECTION!

Do You Know These People?



© 2020 League of Women Voters of Greater Pittsburgh

3

Who is this guy?

- **JOHN FETTERMAN** is the 6'8" tall, guy with the beard and former Mayor of Braddock. (A little town in Western PA).
- He is a DEMOCRAT and was elected in 2018 to be the Lt. Governor of Pennsylvania, second only to Governor Wolf! He doesn't look like Harvard graduate, does he?
- What are his tattoos about? (They are the dates of *people who died violently* in his town when he was mayor.)
- He felt it was his job to help the people in his town and that he failed to help those people who died.
- He loves working in government.

Who is this lady?

- **NIKKI HALEY** is the former (first woman) Governor of South Carolina, appointed by President Trump to be Ambassador to the United Nations. She served for one year.
- She is a REPUBLICAN and a rising star in her party. She loves working in government, too.

These people each made big leaps—leaps possible in America.

Do you think one day you might like to work for Government?

Essential Questions

- Why Vote?
- Who?
- What?
- When?
- Where?
- How???

your **VOTE**
is your **VOICE**

© 2020 League of Women Voters of Greater Pittsburgh

You know all about **ESSENTIAL QUESTIONS**; We will try to answer them all.

WHY would people like John Fetterman and Nikki Haley **WANT TO WORK** in Government? (To make a change, to make a positive difference in citizens' lives. *What other reasons can you think of?*)

Do you agree that "Government" gets a bad rap? (Why or why not?)

BUT, think about all of the ways **GOVERNMENT LAWS AND REGULATIONS** keep citizens **HEALTHY AND SAFE** and **KEEP ORDER**.

- **PRODUCT SAFETY** (safe toys, safe make-up),
- **FOOD SAFETY** (checks at restaurants, recalls of food that cause illness),
- **PHYSICAL SAFETY** (seat belts, car seats for kids, speed limits),
- **WORKERS SAFETY** (must be 16-years-old to work, hours of work limited),
- **ENVIRONMENTAL SAFETY** (laws for safe air and water).

Essential Questions

- Why Vote?
- Who?
- What?
- When?
- Where?
- How???



your VOTE
is your VOICE

© 2020 League of Women Voters of Greater Pittsburgh

Do you know anyone who works for Government?

Think about people whose jobs depend on TAXES—like TEACHERS IN PUBLIC SCHOOLS, police, fire fighters, people who work for agencies like Social Security or the FBI. Can you think of any others you know?

THE GOVERNMENT OFFICIALS WE ELECT MAKE THE LAWS AND REGULATIONS THAT AFFECT US ALL.

“YOUR VOTE IS YOUR VOICE”. VOTING is one way to have a say in how government affects you.

WHY Vote in Every Election?

Why Voting is Important in a Democracy?

Our government affects
many parts of our lives
from *schools and careers* to
health care to the *environment*

Voting is an important right in
our society

By voting, **you make your
voice heard** on how you
think your government
should operate



Right now, there are things you **CANNOT CONTROL**—curriculum, testing, curfews, **SCHOOL CLOSURES!**

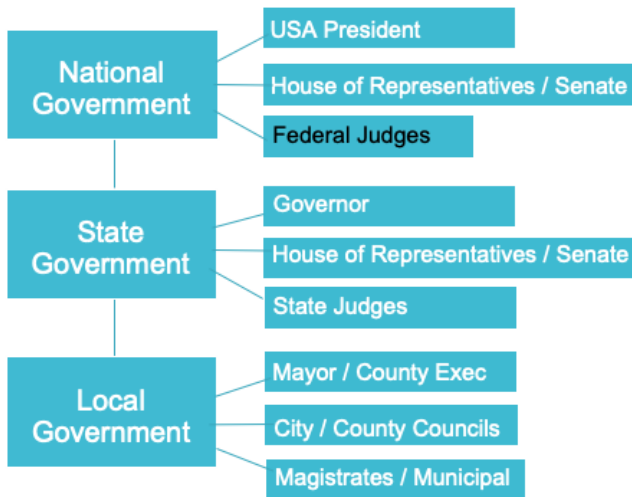
But there is one thing **YOU CAN CONTROL** when you turn 18-years-old; **YOUR RIGHT AND RESPONSIBILITY TO VOTE.**

YOUR VOTE MATTERS. YOUR VOICE MATTERS. AND VOTING MAKES YOUR VOICE HEARD!

Did you know that some elections are decided by a flip of a coin --like a congressman in the Virginia Legislature who won in 2017?

*Local and State elections (called **Municipal Elections**) can be very close, where **EVERY SINGLE VOTE** can make a difference.*

WHAT do we Vote for?



© 2020 League of Women Voters of Greater Pittsburgh

A quick [Civics or Government](#) lesson;

There are three LEVELS of GOVERNMENT; National (Federal), State and Local

There are three BRANCHES in each;

- Executive (President, Governor or Mayor),
- Legislative, (Representatives and Senators who make the laws), and
- Judicial (Judges at all levels. “Magistrates” help when someone breaks local laws.)

TRICK QUESTION: Why are “FEDERAL JUDGES” printed in BLACK? (Because they are APPOINTED BY THE PRESIDENT AND THEY SERVE FOR LIFE!)
So when you elect a President, you are also electing the JUDGES he may select (and the Senate approves).

Everyone else printed in WHITE are the ELECTED OFFICIALS WE VOTE FOR.
WE VOTE FOR THEM TO WORK FOR US!

DON'T Be Negative About Voting



This Photo by Unknown Author is licensed under CC BY-NC-ND

Gwen Ifill on VOTING:

"Voting is the one thing I believe I must do and we all must do and certainly this last election showed that every single vote counts. We also have to hold our elected officials responsible to us even when they are playing to our cynicism. Counting on it, it's a fact. As you go about your lives, you cannot let them count on you to be cynical." (A Shining Light, Mary LeClair)

© 2020 League of Women Voters of Greater Pittsburgh

CHRIS ROCK ON VOTING:

"They don't want you to vote. If they did, we wouldn't vote on a Tuesday. In November. You ever throw a party on a Tuesday? No. Because nobody would come." *New York*

[League of women voters of pennsylvania video contest](#)

Let's have a quick [Vocabulary](#) lesson:

Do you know what these words mean? ["SKEPTICAL"](#) and ["CYNICAL"](#)
Which would you rather be?

SKEPTICAL (unsure, questioning, OPEN)
CYNICAL (negative, no interest, CLOSED).

Some kids say, "Voting is not for me". We can understand feeling like your vote doesn't matter.

*But these people have something to say about that! **READ QUOTES.***

[DON'T LET ELECTED OFFICIALS COUNT ON YOUNG PEOPLE TO BE SO "CYNICAL" THAT THEY DO NOT VOTE!](#)

WHAT Are the Issues You Care About

NATIONAL

- Foreign Policy
- Climate Change
- Healthcare
- Gender Equality
- Social Justice
- Immigration
- Unemployment Insurance
- Taxes
- Student Loans
- Freedom of Speech
- Infrastructure
- Social Security

LOCAL & STATE

- Minimum Wage
- Community Police Relations
- Incarceration
- Animal Rights
- LGBTQ+ Issues
- Race Relations
- Gun Safety
- Pollution & Health
- Fair Housing
- Voting Rights

SCHOOL

- School Safety
- Bullying
- Cyber-bullying
- Over-testing
- Curriculum Choice
- School Lunches
- Bathrooms
- Access to Tech
- Social Media
- People with Disabilities

© 2020 League of Women Voters of Greater Pittsburgh

Here are many **ISSUES** or **PROBLEMS** we need to SOLVE or IMPROVE in our country.

WHAT issues do you care about the most?

(Take a minute to message a friend—does your friend care about the same issues you do?)

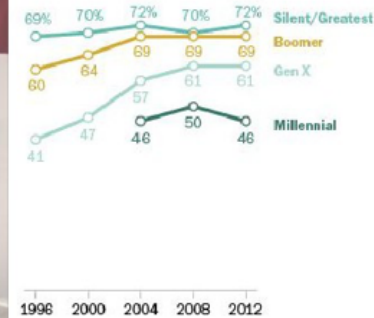
If you could ask the older people in your life (parents, grandparents, aunts, uncles) what would they say they care most about?

(Take a minute to ask the older people in your life!)

ARE YOUR ISSUES THE SAME AS THE ISSUES THE OLDER PEOPLE IN YOUR LIFE CARE ABOUT?

Voter turnout rates in presidential elections, by generation

% of eligible voters who say they voted



Note: Eligible voters are U.S. citizens ages 18 and older. Millennial refers to the population ages 18 to 35 as of 2016. Source: Pew Research Center tabulations of the 1996-2012 Current Population Survey November Supplement (IPUMS). PEW RESEARCH CENTER

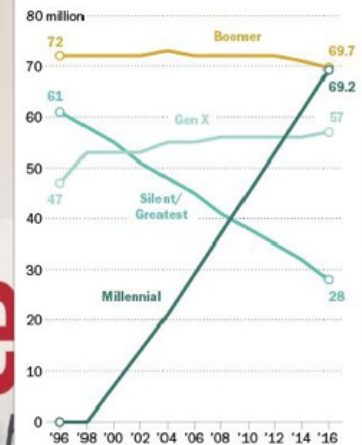
Young people have potential power to impact elections!

18-29-year old's have the most eligible voters by 2020!

We just need to register to vote AND VOTE!

Number of Millennials eligible to vote now roughly equal to Boomers

Eligible voters by generation, 1996-2016



Note: Eligible voters are U.S. citizens ages 18 and older. Millennials refers to population ages 18 to 35 as of 2016. Source: Pew Research Center tabulations of the 1996-2014 Current Population Survey November Supplement (IPUMS) and the April 2016 Current Population Survey. PEW RESEARCH CENTER

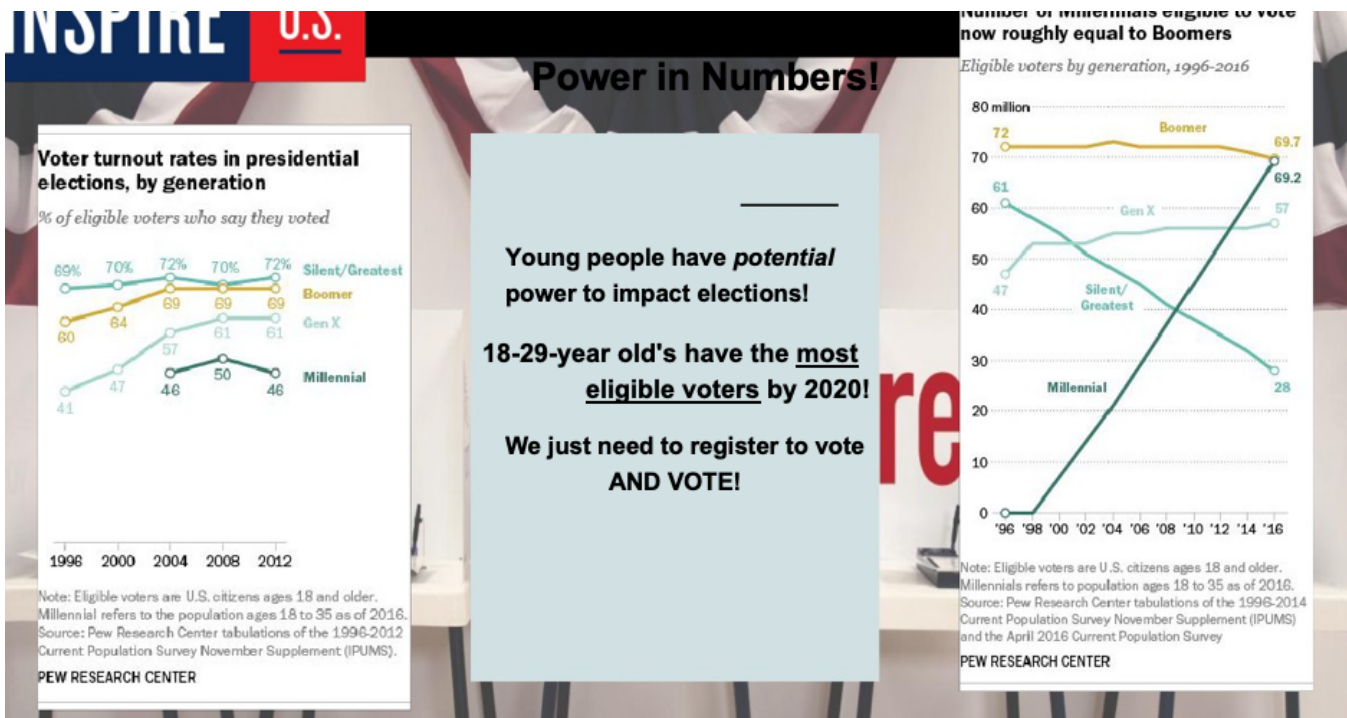
Graph on the LEFT: The bottom line is the number of young people who vote and the top lines are older people who vote.
WHO VOTES MORE? (OLDER PEOPLE)

PICTURE THIS IN YOUR MIND:

Six (6) of your classmates are standing in front of you. They represent ALL of the young people AGES 18-29 who COULD VOTE in the US.

- How many of these young people REGISTERED to vote in the 2016 Presidential Election? (If you said, "Half of them, 3 in 6", you would be correct.)
- How many ACTUALLY VOTED in 2016? (If you said, "1 in 6", you would be correct. Only 1 in 6 young people ACTUALLY VOTED in 2016!)
- **HOWEVER**, we doubled that number and in 2018, 2 in 6 young people actually voted.

That is BETTER— 16% in 2016 and 30% in 2018--BUT NOT GOOD ENOUGH!



Six (6) of the OLDERST PEOPLE you know are lined up in front of you. Guess what? ALL OF THEM ARE REGISTERED VOTERS AND ALMOST ALL OF THEM VOTE IN EVERY ELECTION (5 1/2 out of 6)! That is why older people are called “Super-voters”.

HERE IS THE MOST IMPORTANT THING TO REMEMBER:

Whose ISSUES do ELECTED OFFICIALS care about if mostly older folks are voting?
(If you said, “OLDER PEOPLE’S ISSUES” you would be correct!)

The **GOOD NEWS** is that in 2020, 18-29-year-olds will have the MOST POSSIBLE VOTERS! (Far right and middle charts).

YOU will have the **POWER** to affect the 2020 elections. You just need to USE YOUR POWER to REGISTER and then to VOTE in EVERY ELECTION.

And BRING YOUR FRIENDS!

When young people get involved...things change!

The **Civil Rights Movement** - began with **students** participating in sit-ins at restaurants that refused to serve people of color

Lowering the voting age from 21 to 18 - As young people were being drafted into the military, a pressure arose to allow those old enough to be drafted the opportunity to vote (the 26th Amendment)

Young lawmakers - A few years ago, the nation's youngest lawmaker was elected in West Virginia, Delegate Saira Blair. She actually began her run in the state's primary election in the spring of her **senior year of high school**

Present day - We are seeing students voice their concerns about gun violence in schools. In WV, during the **teacher strike**, some high school students spoke out, protested, or posted on social media

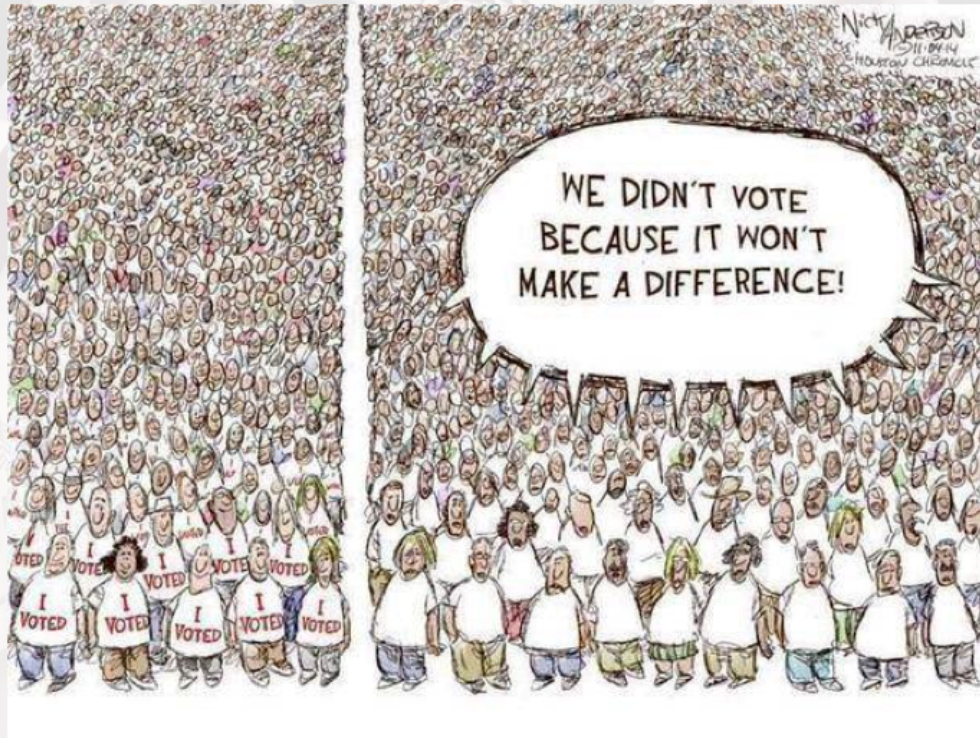
- Across the country there is an increased focus on **Voter Access**
- **2018 midterm election:** the youngest and most diverse Congress (House of Representatives) in history!



Because, when young people get involved, **THINGS CHANGE.**

*Note an increased focus on **VOTER ACCESS**—that means bringing down barriers to easy voting.*

Note the youngest and most diverse House of Representatives in history were elected in 2018!



Remember that many elections are close—some decided by one vote or a flip of a coin.

You WILL have the POWER to make a difference in 2020.

You are
already
a VOTER!



DECISIONS?????



WISE

[This Photo](#) by Unknown Author is licensed under [CC BY-NC](#)

[This Photo](#) by Unknown Author is licensed under [CC BY-SA](#)

© 2020 League of Women Voters of Greater Pittsburgh

If you have a cell phone, you “VOTE” everyday– every time you “like” or “heart” something!

But when you do something as IMPORTANT as VOTING IN AN ELECTION, you need to make a **GOOD DECISION**.

- Use your **BRAIN** to do some RESEARCH from reliable sources,
- Use your **FEELINGS** to figure out who CARES about what you do, and
- Use the **WISE PART** of you to figure out the difference between RIGHT AND WRONG.

Important Web Sites

- To Register, Check Registration,
Find Your Polling Place

- [VotesPA.com](https://www.votespa.com)

- Info for Choosing Candidates

- [Vote411.org](https://www.vote411.org)

© 2020 League of Women Voters of Greater Pittsburgh

17

Here are two very RELIABLE sources of information;

VOTESPA.com:

Where you can register to vote, change your address, your party affiliation*, or find your registration status and your polling place.

VOTE411.org by the League of Women Voters:

A few weeks before every election, you can type in your address and see the candidates who will be on your ballot. If candidates have answered three questions, you will be able to compare their answers side-by-side.

Ask yourself if they care about the things you care about.

*(These websites are noted on the
"How to Make a Plan to Vote" handout (Page 34)*

Important Web Sites

- To Register, Check Registration, Find Your Polling Place

- [VotesPA.com](https://www.votespa.com)

- Info for Choosing Candidates

- [Vote411.org](https://www.vote411.org)

*A Definition of “POLITICAL PARTIES” in the US:

- There are two major parties in the US; the DEMOCRATS and the REPUBLICANS.
- Two smaller parties; Green and Libertarian. PA has *no “Independent” party*.

A **POLITICAL PARTY** is an organized group of people who have the same ideas, or who see things the same way and who find candidates for elections who will represent those ideas and positions.

EXTENSION: *Do some research to figure out the ideas and positions for each of these parties.*

WHAT Types of Elections and How Many

NEW Primary Date (June 2, 2020)

- Only **two** parties in the Primaries
 - Voters enrolled in the Democratic Party and Republican Party choose their nominees
 - **Closed primaries:** Republicans vote for Republicans; Democrats vote for Democrats
 - Last day to register to vote for the Primary is May 18

General Presidential (November 3, 2020)

- Other parties, like Green and Libertarian can have candidates on the ballot-(No "Independent" party in PA)
- Every voter can vote for ANY candidate
- Straight party voting has been eliminated; must go through entire ballot selecting each one

© 2020 League of Women Voters of Greater Pittsburgh

1. There are **TWO ELECTIONS*** every year; one in the **spring (PRIMARY)** and one in the **fall (GENERAL)**.
2. Voters in **CLOSED PRIMARIES** choose the candidates that will be on the GENERAL ELECTION BALLOT. Only the two major parties (DEMOCRATS and REPUBLICANS) can participate in Pennsylvania's Closed Primary Elections.
3. In a **CLOSED PRIMARY**, Democrats get one ballot and Republicans get a different ballot. Democrats vote for Democrats; Republicans vote for Republicans.
4. Voters must be **REGISTERED** in one of these two parties to vote in a Closed Primary Election. If you check "None" for Party Affiliation you will NOT be able to vote in the Primary Election.
5. To vote in the **JUNE 2 Primary Election**, you must be **18-years-old by June 2** and Register to Vote by the cut-off date of **MAY 18**. *And don't forget, in a Closed Primary you must be registered as a Democrat or Republican.*
6. The following Pages 21 and 22 will explain **Absentee and Mail-in Voting**:
 - **May 26**--the last day to apply for this ballot
 - **June 2**—the last day (by 8pm) the County Board of Elections will receive these ballots

WHAT Types of Elections and How Many

NEW Primary Date (June 2, 2020)

- Only **two** parties in the Primaries
 - Voters enrolled in the Democratic Party and Republican Party choose their nominees
 - **Closed primaries:** Republicans vote for Republicans; Democrats vote for Democrats
 - Last day to register to vote for the Primary is May 18

General Presidential (November 3, 2020)

- Other parties, like Green and Libertarian can have candidates on the ballot-(No "Independent" party in PA)
- Every voter can vote for ANY candidate
- Straight party voting has been eliminated; must go through entire ballot selecting each one

© 2020 League of Women Voters of Greater Pittsburgh

5. In the **GENERAL ELECTION**, anyone can vote for anybody—*the party you belong to, if you have chosen one, doesn't matter*. There might also be other candidates on the ballot besides a Republican and a Democrat. There may be a Green or Libertarian candidate. There is no "Independent" party in PA, but there could be an Independent candidate on a General Election ballot.

It is interesting to think about how having other candidates on the General Election ballot might affect who wins!

6. If it is true that more people vote in General Elections than in Primary Elections, does your vote count even more when less people vote? (YES!)

7. Voting in Municipal (Local) elections can have very close results with a low numbers of voters. Municipal elections really do affect your own life, because you are electing people like school board members, city council members, and magistrates.

*(*There may be additional elections, called **SPECIAL ELECTIONS**, if elected officials leave office for some reason before their terms are complete.)*

WHERE will you be living next election?

- Today, use your home address, to register to vote
- After you graduate, if you temporarily live away from that address (college, military, tech-prep, etc.) you can vote there. You will need to go to [VotesPA.com](https://votespa.com) to change your registration information
- Or, you can use an **ABSENTEE** or **MAIL-IN BALLOT** (SEE NEXT SLIDE)

© 2020 League of Women Voters of Greater Pittsburgh

IMPORTANT TO THINK ABOUT:

*Where will you be living on **NOVEMBER 3, 2020** for the very important **PRESIDENTIAL GENERAL ELECTION**?*

Today you will register to vote using your HOME address. On November 3, 2020, if you are not living at home, you need to decide:

- 1. Do I want to go home to vote at my home polling place? This is easy—just make sure you are home to vote on November 3.*
- 2. Do I want to vote where I now live, BUT for the candidates on my home precinct ballot? (This is especially important for Municipal Elections.)*
*You will need an **ABSENTEE** or **MAIL-IN BALLOT**. You must start this process 6-weeks before the election (or in the summer).*
Apply online at [VotesPA.com](https://votespa.com). When your ballot is mailed to you, complete it and return it to the address provided.
- 3. Do I want to vote where I now live (if still living in PA).*
You will need to change your address on the voter register to where you currently live by going to [VotesPA.com](https://votespa.com) at least 15 days before the election.

WHERE Do I Vote? (Continued)

- If you will be living at your current (home) address, you will vote **IN THE POLLING PLACE** listed on your **VOTER REGISTRATION CARD**
- If you temporarily live somewhere else, you are sick or disabled, or it is just your preference, you can vote **BY MAIL**

Get updated information from [VotesPA.com](https://votespa.com) at least 6 weeks before election!

- Complete the application for an **Absentee or Mail-in Ballot on-line**
- **Absentee or Mail-in Ballot** must be received by 8:00pm on Election Day

© 2020 League of Women Voters of Greater Pittsburgh

More on [ABSENTEE](#) or [MAIL-IN VOTING](#):

*You must start this process 6-weeks before the election (or in the summer).
Apply online at VotesPA.com. When your ballot is mailed to you,
complete it and return it to the address provided.*

NOTE to those who may be joining the MILITARY:

The rules for voting are different and specific to members of the military. Information about how to vote will be available to you from the military and VotesPA.com.

Remember, no matter how you choose to vote, in person or by mail,
YOU have the POWER if you CHOOSE TO REGISTER AND VOTE IN EVERY
ELECTION.

Voter Registration ID Card

Dear Voter:

Attached below is your Certification of Voter Registration. Please carefully detach, sign and keep for your reference. Please notify the Election Commission within 10 days from the date it was mailed if any information on the certificate is incorrect; otherwise, the information shall be deemed correct for voter registration purposes.

1725 BARR AVE
PITTSBURGH, PA 15205
Municipality: CRAFTON
Ward:
Precinct: CRAFTON 01 02

Allegheny County, Pennsylvania
Certificate of Voter Registration

Voter ID:
DOB:
DEMOCRATIC
Enrollment Date: 9/1/1998

THIS CARD IS THE CERTIFICATE OF VOTER REGISTRATION OF YOUR NEW ELECTION DISTRICT, DIVISION OR PRECINCT. Voters who are voting for the first time in an election district must show a form of identification. THIS CARD CAN BE USED AS THAT FIRST TIME PROOF OF IDENTIFICATION. For a list of other acceptable forms of photo and non-photo identification for first-time voters, please call your county board of elections, visit www.dos.pa.gov, or call toll free at 1-877-VOTESPA.

Polling Place:
CRAFTON ELEMENTARY SCHOOL
1874 CRAFTON BLVD
PITTSBURGH, PA 15205

Signature or Mark of Elector

Valid 10 days after: 10/24/2019 or upon receipt by the voter

© 2020 League of Women Voters of Greater Pittsburgh

This is what the **VOTER REGISTRATION ID CARD** looks like; put it in a safe place like your wallet!

The Voter Registration Card shows your address, which party you have chosen if any (in capitals) and your POLLING PLACE.

PLEASE NOTE:

AFTER you send in your VOTER REGISTRATION APPLICATION today, AND **AFTER** you turn **18-YEARS-OLD**, it may take **3-4 WEEKS** before you receive your Voter Registration ID Card in the MAIL.

(If you don't receive your card after that time, contact your Allegheny County Voter Registration Office at 412-350-4500.)

Voter Registration ID Envelope

SEE REVERSE SIDE FOR EASY OPENING INSTRUCTIONS

Allegheny County Elections Division
609 County Office Building
542 Forbes Ave
Pittsburgh, PA 15219-2953



RETURN SERVICE REQUESTED

1725 BARR AVE
PITTSBURGH, PA 15205

© 2020 League of Women Voters of Greater Pittsburgh

THIS IS THE OFFICIAL LOOKING ENVELOPE—DON'T THROW IT AWAY!

**ID is required
the FIRST
TIME you vote
in a new
polling place
in PA**

- Identification (ID) is required the **FIRST TIME** you vote
- The **best form of ID** is your **VOTER REGISTRATION CARD**. If you are 18-years old (or once you turn 18) you will receive it 3-4 weeks after your registration application is received

Don't lose it!

© 2020 League of Women Voters of Greater Pittsburgh

In Pennsylvania, you will need your **VOTER REGISTRATION CARD AND an APPROVED FORM OF ID** (like a driver's license):

- the **FIRST TIME** you vote, and/or
- the **FIRST TIME** in a **NEW** polling place.

Good advice for STUDENTS: Your **VOTER REGISTRATION CARD** is a great form of ID, along with a **PHOTO ID** if you have one.

ATTACHED is an **IMPORTANT HANDOUT** that will help you, called **HOW to MAKE a PLAN to VOTE:** (Page 34)

- **BEFORE VOTING DAY**, think about how to make time, how to get to the polling place and **DON'T FORGET YOUR ID**.
- Other forms of valid ID are listed.
- Two **IMPORTANT WEBSITES** from Page 17 are listed.

HOW do I Vote – at my Polling Place

In Allegheny County,
we will ALL learn to VOTE
with a **NEW**
Paper Ballot System
in the 2020 Elections!
...to be continued



This Photo by Unknown Author is licensed under [CC BY-ND](#)

© 2020 League of Women Voters of Greater Pittsburgh

WE ARE ALL NEWBIES! A NEW VOTING SYSTEM will be in place for the
JUNE 2nd Primary Election.

When a **FIRST-TIME VOTER** enters their Polling Place:

- You will see a table where several poll workers are sitting.
- You will say your name, present your Voter Registration ID Card and a Photo ID (or other approved ID) and sign the Voter Register.
- You will be handed your **BALLOT** and a **BALLOT MARKING DEVICE**.
- The poll worker will give you instructions and walk you to the area where you will choose candidates on the ballot.

VOTING for the FIRST TIME:

- You will fill out a form like a Scantron you've used in school.
- *Check carefully to make sure you have made all of the choices.*
- After you fill in the bubbles, you will simply walk it over to a scanner and feed it in.
- You will see a message like, "Thank you for voting."

HOW do I Vote – at my Polling Place

In Allegheny County,
we will ALL learn to VOTE
with a **NEW**
Paper Ballot System
in the 2020 Elections!
...to be continued



This Photo by Unknown Author is licensed under [CC BY-ND](#)

© 2020 League of Women Voters of Greater Pittsburgh

This new system is not hackable and can be audited.

If you make a mistake you must ask for a new form. Duplicate answers or crossing out answers on a form will result in it being tossed and your vote not counted.

REMEMBER: If you are nervous about voting the first time, think about how everyone gets a little nervous about doing new things. Also remember that **EVERYONE** will be a **FIRST-TIME VOTER** with the new voting system.

There will be people at your polling place who will help you—just ask.

Problem on
Election Day?
Don't leave
without
voting!

● **Know your rights!**

- You can **ask for help** and assistance
- There must be **no discrimination or intimidation**
- **Forgot your ID** when asked for it?
Go home for it, if you can, or ask for a **provisional paper ballot**

© 2020 League of Women Voters of Greater Pittsburgh

Remember to take your forms of ID and know that it is
YOUR RIGHT TO VOTE.

You can ask for help.

*Did you know that **“RETURNING CITIZENS” in Pennsylvania;***

- *Are those individuals who had been in jail after being convicted of a felony (while in jail they had lost the right to vote),*
- *But once released from jail, will have their **VOTING RIGHTS RESTORED** (given back!)*
- *They just have to **RE-REGISTER** to vote.*

TODAY To Register to Vote You Will Need

- To be a **U.S. citizen**
- **18 years old by JUNE 2 (Primary) or**
- **18 years old by November 3rd (General)**
- Your PennDOT ID number, PA Driver's License number, **OR** the last four digits of your Social Security Number

© 2020 League of Women Voters of Greater Pittsburgh

Look at this SLIDE and **COMPLETE THIS LESSON** BEFORE you register to vote.
You must be 18-years-old on or by NOVEMBER 3, 2020.

You can: **CHOICE #1-** Register to Vote **ONLINE** **OR**
CHOICE #2- **PRINT** the Voter Registration Application

CHOICE #1—**Registering to Vote ONLINE** is easy,
If you have a PA Driver's License or PennDOT ID.
(These documents mean your signature is available to PA Government and you don't need to upload a signature.)

- GO to [VotesPA.com](https://www.votespa.com) (Page 33) and
- Click on "*How to Register to Vote*",
- Follow the Directions, **AND**
- Take a **SCREENSHOT** of the last page of the Application

CHOICE #2--You can **PRINT** the **Voter Registration Application**
(Page 33) and
FOLLOW THE DIRECTIONS in Pages 30, 31 and 32.

Page 1
Use black ink

Pennsylvania Voter Registration Application

Print your name 1 Last name First name Middle name or initial

Eligibility 2 Are you a citizen of the U.S.? Yes No
Will you be 18 years or older on or before election day? Yes No

Reason 3 ☐ New registration ☐ Change of name ☐ Change of address
☐ Change of party ☐ Federal or State employee registering in county of last residence

About you 4 Birth date Sex ☐ M ☐ F Race (optional)
Phone Email

Your address 5 Address (not P.O. Box) Apt. number
City/Town State PA Zip Code
Municipality County
☐ I do not have a street address or permanent residence (See map on back)

The address where you receive mail 6 ☐ Same as above Address or P.O. Box
City/Town State Zip Code

Identification 7 PA driver's license or PennDOT ID card number
Last four digits of your Social Security number
☐ I do not have a PA driver's license or a PennDOT ID card or a Social Security number.

Political party 8 ☐ Democratic ☐ Republican ☐ Other: ☐ None

Voting assistance 9 ☐ I require help to vote. I need this kind of assistance:
My preferred language

If your name or address has changed 10 Name on previous registration
Full previous address and county
PA Voter No. (if available) Year

Declaration 11 I declare that:
• I am a United States citizen and will have been a citizen for at least one month on the day of the next election.
• I will be at least 18 years old on the day of the next election.
• I will have lived at the same address in Section 5 for at least 30 days before the election.
• I am legally qualified to vote.
I affirm that this information is true. I understand that the declaration in this form is an affidavit, and if the information is not true, I can be convicted of perjury and fined up to \$10,000, or jailed for up to one year, or both.

Help with this form 12 Name of assistant
Address
Phone Signature of assistant

Page 2

Be a poll worker 13 ☐ I would like to be a poll worker on Election Day.
☐ I would like to be a bilingual interpreter on Election Day. I speak this language:

Instructions for Section 5:
How to show your address on a map
If you live in a rural area and do not have a street address, use the map to the right to show where you live, with landmarks and road names.
If you are homeless, use the map to the right to show where you spend most of your time.
How to fill in the map:
• Write the names of the roads or streets nearest to where you live.
• Draw an X to show where you live.
• Use a dot to show the location of landmarks, such as schools, churches, or stores, and identify them by name.

Draw your map here.

Example map. Do not use this map.

Let's Register to Vote!

- Please write in PEN and write CLEARLY
- Remember, PA has **closed** Primary Elections
- Volunteer to be a poll worker!

© 2020 League of Women Voters of Greater Pittsburgh

CHOICE #2 PRINTED FORM: Complete the SHADED AREAS only.

- PLEASE PRINT CLEARLY; USE BLACK PEN.
- When printing dates, use 4 digits for the year; (for example 2002 OR 2020).
- **BIRTH DATE** is very important. (*18-years-old on or by November 3, 2020*)
- Phone number/email are necessary if the County Office needs to contact you.
- County: **Allegheny.**
- Don't need Municipality. Leave blank.
- Check for 5 CHECKMARKS (*Citizen, 18-years-old, New registration, Same as above, Political Party* or (None) No Affiliation.*)
- Only **ONE FORM of ID** is required: EITHER your Driver's License or PennDot ID **OR Last 4 digits** of your Social Security Number.

CONTINUED ON PAGE 31

Pennsylvania Voter Registration Application Page 1

Print your name 1 Last name First name Middle name or initial

Eligibility 2 Are you a citizen of the U.S.? Yes No
Will you be 18 years or older on or before election day? Yes No

Reason 3 ☐ New registration ☐ Change of name ☐ Change of address
☐ Change of party ☐ Federal or State employee registering in county of last residence

About you 4 Birth date Sex ☐ M ☐ F Race (optional)
Phone Email

Your address 5 Address (not P.O. Box) Apt. number
City/Town State PA Zip Code
Municipality County
☐ I do not have a street address or permanent residence (see map on back)

The address where you receive mail 6 ☐ Same as above Address or P.O. Box
City/Town State Zip Code

Identification 7 PA driver's license or PennDOT ID card number
Last four digits of your Social Security number
☐ I do not have a PA driver's license or a PennDOT ID card or a Social Security number.

Political party 8 To vote in a primary, you must register with either the Democratic or Republican party.
☐ Democratic ☐ Republican ☐ Other: ☐ None

Voting assistance 9 ☐ I require help to vote. I need this kind of assistance:
My preferred language:

If your name or address has changed 10 Name on previous registration
Full previous address and county
PA Voter No. (if available) Year

Declaration 11 I declare that:
• I am a United States citizen and will have been a citizen for at least one month on the day of the next election.
• I will be at least 18 years old on the day of the next election.
• I will have lived at the same address in Section 5 for at least 30 days before the election.
• I am legally qualified to vote.
I affirm that this information is true, I understand that this declaration is the same as an affidavit, and if this information is not true, I can be convicted of perjury and fined up to \$15,000, or imprisoned for up to 5 years, or both.
Signature or mark
Print name
Today's date

Help with this form 12 Name of assistant
Address
Phone Signature of assistant

Be a poll worker Page 2

If you check either of these boxes, your county voter registration office will contact you.

13 ☐ I would like to be a poll worker on Election Day.
☐ I would like to be a bilingual interpreter on Election Day. I speak this language:

Instructions for Section 5:
How to show your address on a map
If you live in a rural area and do not have a street address, use the map to the right to show where you live, with landmarks and road names.
If you are homeless, use the map to the right to show where you spend most of your time.
How to fill in the map:
• Write the names of the roads or streets nearest to where you live.
• Draw an X to show where you live.
• Use a dot to show the location of landmarks, such as schools, churches, or stores, and identify them by name.

Draw your map here.

Example map. Do not use this map.

Let's Register to Vote!

- Please write in PEN and write CLEARLY
- Remember, PA has **closed** Primary Elections
- Volunteer to be a poll worker!

© 2020 League of Women Voters of Greater Pittsburgh

IMPORTANT--DON'T FORGET:

- In the BOX, write your SIGNATURE,
- Clearly PRINT YOUR NAME below,
- Write TODAY'S DATE below that.

***Remember that you must register as a Democrat or Republican to vote in Pennsylvania's Closed Primaries.**

The Primary Election NEW DATE is JUNE 2. The deadline to register to vote for the PRIMARY ELECTION (if you are 18-years-old by JUNE 2) is MAY 18.

CONGRATULATIONS!

You just
completed this
online course



[This Photo](#) by Unknown Author is licensed under [CC BY-NC](#)

- You know a lot more about our democracy and about how to VOTE.
- Now take a short quiz. There is only ONE question.
- *Did you register to vote? Email your teacher if you did!*

© 2020 League of Women Voters of Greater Pittsburgh

CONGRATULATIONS! You just made a very ADULT decision to COMPLETE this ONLINE COURSE and to REGISTER TO VOTE!

Don't forget to:

- **(CHOICE #1)** TAKE A SCREENSHOT of your ONLINE APPLICATION OR
- **(CHOICE #2)** SNAP A PHOTO of your PRINTED (completed) VOTER REGISTRATION APPLICATION, and then
- **EMAIL** your VOTER REGISTRATION APPLICATION PHOTO to YOUR TEACHER!

(CHOICE #2) VERY IMPORTANT!

MAIL the **PRINTED Application** to your County Voter Registration Office:

Allegheny County Voter Registration Office
542 Forbes Avenue
Ste 609
Pittsburgh, PA 15219-2913

Don't forget the stamp!

(SEE PAGE 33 AND 34 for ATTACHMENTS AND LINKS to WEBSITES)

LINKS to WEBSITES

Links to Websites:

- [VotesPA.com](https://www.votespa.com) Online Application
- [Voter Registration Application](#) – Printed Application
- [Vote411.org](https://www.vote411.org)—Voter and Candidate Information

© 2020 League of Women Voters of Greater Pittsburgh

ATTACHMENTS and LINKS to WEBSITES:

(CHOICE #1) [VotesPA.com](https://www.votespa.com)

ONLINE Voter Registration Application. *Don't forget the **SCREENSHOT!***

(CHOICE #2) PRINTED Voter Registration Application

- *Click to open and print:* [Voter Registration Application](#)
- Follow the instructions in PREVIOUS PAGES 30, 31, and 32 to complete, **TAKE A PHOTO**, and then
- **MAIL your application** to the County Voter Registration Office:
Allegheny County Voter Registration Office
542 Forbes Avenue
Ste 609
Pittsburgh, PA 15219-2913 *Don't forget the stamp!*

[Vote411.org](https://www.vote411.org)

At this *League of Women Voters* website, a few weeks before every election, type in your address and view the candidates who will be on your ballot, and more. If candidates have answered three questions, you will be able to compare their answers side-by-side.