

Empowering Voters. Defending Democracy.

We envision a democracy where every person has the desire, the right, the knowledge, and the confidence to participate.

Democracy at a Crossroads: Facing the Challenges of Disinformation and Misinformation

Wednesday, March 20, 2024

Location: Christ Church Parish Hall, South State and
Water Streets, Dover

- **Registration & Refreshments 9 am**
- **Program: 9:30 – Noon, with break mid-way**

- **Lunch with legislators: Noon – 1 pm**
- **Visit Legislative Hall in the afternoon.**



Panelists:



Ralph Begleiter, Rosenberg Professor of Communication Emeritus at the University of Delaware, has had a significant impact on programming in political communication at UD, founding the Center for Political Communication, a multi-disciplinary program of teaching, research and events focusing on the use of digital technology in campaigns and public affairs. He co-led the creation of a new journalism minor at UD in the mid-2000s and spearheaded creation of a new minor in political communication in 2010.

During the 1980's and 1990's, he was CNN's "world affairs correspondent," the network's most widely traveled reporter. Later, he hosted the nationally broadcast PBS program "Great Decisions." He has worked in one hundred countries on all seven continents, including taking university students to Cuba, South America,

He holds an Honors B.A. in political science from Brown University, and an M.S. in Journalism from Columbia University. He is a member of the National Honor Society, Phi Beta Kappa, and the Board of Trustees of Delaware Hospice.

In 1994, Georgetown University's Graduate School of Foreign Service awarded Begleiter its Weintal Prize for diplomatic reporting. In November 2000, editors of the Brown Alumni Magazine named him among the one hundred alumni who have had "greatest impact... on the twentieth century." Other honors include awards from the National Press Club, the National Academy for Cable Programming, the Houston International Film Festival, the New York Festivals International Competition for Television, Film and Video Communication, the Associated Press and United Press International.

(Continued on page 2 League Day)

(Continued from page 1 League Day)

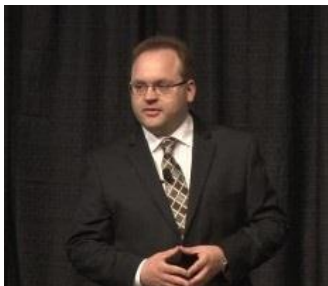


Tom Byrne, News Director for Delaware Public Media (DPM), has been a fixture covering Delaware for over three decades.

He became news director for DPM’s online predecessor, DFM News, in 2010, overseeing the launch of the news service and guiding its two-year expansion and transition to Delaware Public Media, an NPR member station. He leads DPMedia’s reporting, editing, and on-air staff and is responsible for daily news operations and coverage decisions.

A Philadelphia native, Tom was the sports director at WNBI-AM/FM in Park Falls, Wisconsin, before moving to Delaware in 1990. For the next 20 years he worked as sports editor and anchor at WILM Newsradio in Wilmington and served as a reporter, producer, sports editor, anchor, and host for WHYY-TV news programs in Delaware.

Tom’s work has been honored by the Delaware Press Association, the Associated Press, the Philadelphia chapter of the Society of Professional Journalists, and the National Federation of Press Women. He was named the Delaware Press Association’s 2019 Communicator of Achievement in recognition of his work in the First State.



Andrew M. Goretsky, Ed.D. is the Regional Director for the Anti-Defamation League’s (ADL) Philadelphia office, serving Eastern PA, Southern NJ, and DE. ADL is a leading anti-hate organization with a more than 100-year-old mission to “Fight the defamation of the Jewish people and to secure Justice and Fair Treatment to All.” Andrew joined ADL In January 2022. Prior to joining ADL, Andrew worked in Higher Education Administration for 23 years.

Andrew began his career working with students with Learning Differences at Landmark College in Vermont. He holds a Doctor of Education in Higher Education Administration from The George Washington University; Master of Arts in Student Personnel Administration from New York University; and a Bachelor of Science in Industrial Engineering from SUNY at Buffalo. Andrew’s dissertation research is on Student Engagement and mobile technology, and he has specific interest in the proliferation of hate in online spaces.



Rep. Cyndie Romer is the State Representative for the 25th District, serving the Newark area. She was elected in 2022 and serves as the Chair of Technology & Communications, Vice Chair of Judiciary, Member of Health and Human Development, Education, Corrections and Public Safety. She is also co-Chair of the Women’s Caucus. She services on the Advisory Committee for Tech Impact and is a Board Member of the Newark Police Athletic League.

A proud graduate of the University of Delaware, Cyndie boasts an impressive 25-year career in the Tech industry, bringing a wealth of experience and expertise to her public service position. Having called Newark home for over 20 years, she is deeply committed to fostering an environment that makes Newark an exceptional place to live, work, and play.

When she is not spending time in the district, she loves being with her family and friends at the beach. She has a husband Steve, two children, Leah and Megan, and an adorable dog named Bodhi.

(Continued on page 3 League Day)

(Continued from page 2 **League Day**)



Rep. Bryan Shupe represents the 36th District, serving his second term in the General Assembly. His prior service in public office was as Mayor of Milford, having been elected as the youngest Mayor in Milford's history in 2014.

He self-describes himself as” a local business owner, CEO of a statewide news network, and State Representative...who has worked to jumpstart our local economy through community-driven solutions.”

He created Milford’s first hyperlocal community-driven media outlet, called *Milford Live*. While traditional newspapers filled their pages with police and fire reports, Shupe created an all-digital platform to focus on the positive outcomes from innovative businesses, nonprofits, and community leaders. Since, he has become CEO of *Delaware LIVE News* - a network that covers statewide and local news and that live streams local high school sports.

The Shupe family, led by his wife Sherry, started a family business in Milford in 2010 called Fur Baby Boutique. In 2023 the Shupe family partnered with the Helmick family of Milford to open the Farmacy Market, a fresh and fine foods market in Downtown Milford.

As a State Representative, he has pushed reforms for clean water, vocational training, voting rights, government transparency, and budget stabilization efforts.



Sen. Bryan Townsend Sen. Bryan Townsend represents the 11th Senatorial District, which covers the Southern Newark area, including portions of Bear and Glasgow.

The son of a retired Newark police officer and a retired public-school teacher, he graduated from Glasgow High School in 1999 before attending the University of Delaware (economics/philosophy/biology), the University of Cambridge (Chinese studies), and Yale Law School. After law school, Bryan returned to Delaware to clerk for Chancellor William Chandler III of the Delaware Court of Chancery. He then became an attorney focused on Delaware corporate litigation, and has represented Delaware businesses of all sizes, as well as children in foster care, victims of domestic violence, and a veteran with service-related disabilities.

Bryan also has volunteered with the Christiana Volunteer Fire Co., Special Olympics Delaware, the Food Bank of Delaware, and Big Brothers Big Sisters Delaware.

He was first elected to the Delaware Senate in 2012. The Senate Democratic Caucus elected him Majority Whip in 2018. He has served as Majority Leader since 2020.

Bryan currently serves as chair of the Senate Labor Committee and vice chair of the Senate Executive and Legislative Council committees. He is also a member of the Senate Judiciary, Housing & Land Use and Rules & Ethics committees.

Event Sponsor:

Cosponsors:



Registration form on page 11. \$40 registration fee (covers breakfast and lunch)

Limited scholarships available. Call 302-571-894. Registration link: **click logo.**



The Discourse of Nonpartisanship

As we head into a crucial election year – during which we will likely see infuriating and inaccurate information everywhere – it makes sense to reflect on what exactly a nonpartisan LWV means. As members of the League, we should all be ready to discuss and defend LWV and its positions in a calm, accurate, and transparent manner while emphasizing that we are truly nonpartisan.

I'd like to borrow from a 2023 opinion piece in the *Bucks County Herald* by Cathy Morano of LWV Bucks County, Pennsylvania¹. It was written in response to reader comments insinuating that LWV is partisan (based on prior articles written by that League).

In general, non-partisan refers to a person or organization that takes a position on a particular issue based on what they see as the merits of the issue, after rational analysis. In contrast, a partisan person or organization takes a position on a particular issue because that is the position their political party takes.

The article went on to describe LWV as wearing two hats—a voter services hat and an advocacy hat. On the voter services side is, of course, voter registration, Vote411, and similar educational information provided by LWV. Ms. Morano states that the “League does not endorse parties or candidates for office, does not fund candidates, and does not ask their members about their political affiliation, if any. We register voters no matter which party they affiliate with. We disperse legislative guides and election information without regard for party. This is not partisan.”

Similarly, on the advocacy side, she notes the following:

While the League wants all citizens to vote, we do not want them to vote blindly or based only along party lines. We believe voters should understand the issues — and where they stand on each issue — in order to know how to cast their votes. To this end, League members across the state or nation (depending on the topic) study many issues from all sides and attempt to reach a consensus. The resulting consensus (and we sometimes fail to reach a consensus) becomes the League's position on that issue. Once the League has reached a position on an issue, it lobbies for that position. This is our advocacy hat. We have positions on a wide range of topics, including women's rights, gun safety, climate change/energy, fair funding for education, digital equity, and criminal justice. Our positions do not take into consideration those of any party's platform. If either party happens to agree with one or another of our positions, that is purely coincidental. This is not partisan.

While it may be difficult to see real action happen on this front in our current political climate, our DE Leagues can certainly do our part to convey how serious nonpartisanship is and demonstrate how we follow its values. The League's work helps our democracy function the way that it should by ensuring that voters can not only cast their ballots but do so in an educated and informed manner. Our candidate forums and VOTE411 are prime examples of how the League embodies these philosophies.

1. <https://buckscountyherald.com/stories/what-does-non-partisan-mean,23577> (Mar. 16, 2023).1.



Donate during the 24-hour period:
6 pm March 7th through 6 pm March 8th

Goal: \$10,000



Help us to GET OUT THE VOTE in 2024!

...with VOTE411, social media, candidate forums,
voter education events, print materials, and public advertising

It all starts at: domore24delaware.org/fundraisers/league-of-women-voters-of-delaware

- ✓ Sign up **NOW** to get a reminder
- ✓ Donate 3/7 to 3/8 at the DoMore24 Delaware website
- ✓ Amazing prizes and incentives
- ✓ Come to our kickoff party 5:00-7:00 on 3/7 (details coming soon)
- ✓ Check our website (lwwdelaware.org), Facebook & Instagram (@LWVDE)
- ✓ Spread the news far and wide on your social media outlets



School Board Elections May 14

Vote411 will be available with school board voting and candidate information after 4/15. Vote411 will include the following:

- Your school district
- If your district has a competitive race
- Where to cast your ballot – no early voting for school board elections.
- The candidates running, and their views on important issues.

To find out voter eligibility and what to bring to the polls click the link below.

<https://elections.delaware.gov/voter/schooleligibility.shtml>

To vote absentee, you must request a special school board absentee ballot. You will not automatically receive a ballot even if you are a permanent absentee voter.

https://elections.delaware.gov/voter/absentee/pdfs/absentee_ballot_application_school_elections.pdf



EAT, DRINK DONATE

THURSDAY
MARCH 7
5-7 PM

Join us for a live kickoff of LWVDE's 2024 DoMore24 fundraising campaign!

- NCC: 5-7 at Applebee's, 900 Churchman's Rd in Christiana
- Kent: 5:30-7:30 pm (location TBD) (location address) (address line 2)
- Sussex: 5-7 at Iron Hill Brewery, 19815 Coastal Hwy, Rehoboth Beach



[domore24.org](https://www.domore24.org)
www.domore24delaware.org/fundraisers/league-of-women-voters-of-delaware

Put the **fun** in fundraising - bring your friends!



Link for details: <https://www.domore24delaware.org/fundraisers/league-of-women-voters-of-delaware>

Have you ever considered joining a committee!

It is a terrific opportunity to become knowledgeable about an issue, legislation or have an impact. Make new friends and have free discussions. Check out the next page!

LWV of Delaware statement on Delaware Superior Court’s February 25, 2024, decision finding that early voting and permanent absentee voting are unconstitutional.

The LWVDE was disheartened with the Superior Court’s February 25, 2024, decision finding that early voting and permanent absentee voting are unconstitutional. Delaware is now only one of four states that does not have early in person voting. Removing the long standing permanent absentee option will make it more difficult for people with disabilities, elderly, and military families to vote.

We are pleased with the Attorney General’s announcement that the Department of Justice will appeal this decision to the Delaware Supreme Court and move for a stay. The DOJ also clarified that the ruling only applies to the November General Election, so the upcoming April presidential primaries are not impacted. We are hopeful that the Delaware Supreme Court will allow early voting and permanent absentee voting to continue.

Due to the recent challenges to Delaware’s election laws, the LWVDE will be joining the ACLU and other members of the Delaware Voting Rights Coalition in a campaign to amend the Delaware Constitution to ensure the voting rights of all Delawareans are protected. As always, LWVDE remains committed to defending democracy and ensuring that elections are fair and accessible.

**Advocacy Corps (AC) Committees
As Of January 25, 2024**

Individual ‘issue-focused’ committees of the AC are listed below, along with meeting schedules and contact information.

These committees use the League’s policy positions as the basis for analyzing legislative and administrative proposals and then submit their recommendations to the AC. Testimony is prepared and presented at legislative hearings by League Registered Lobbyists. Committees also serve to share best-practice ideas and suggestions to take back to participants’ local Leagues.

- **Climate Change and Energy Portfolio Committee** – First Fridays at 3 pm. Chair Peggy Schultz (schultz_peggy@yahoo.com)

Supports climate goals and policies that are consistent with the best available climate science and that will ensure a stable climate system for future generations, especially an aggressive and comprehensive energy use/climate change plan for Delaware, to include expansion of renewable energy options, particularly wind power. Supports environmentally sound policies that reduce energy growth rates, emphasize energy conservation, and encourage the use of renewable resources.

(Continued on page 8 Advocacy)

(Continued from page 7 Advocacy)

- **Criminal Justice Portfolio Team** – Fourth Wednesdays at 10 am. Chair Chris Asay (ChrisAsay@aol.com)

Supports a criminal justice system that is just, effective, equitable, and transparent, thereby protecting the public and ensuring fair treatment of the accused, the convicted, and those re-entering society after incarceration.

- **Education Portfolio Team** – meeting as needed. Chair Susan Mitchell (svm.lwv.ncc@gmail.com)

Supports equal access to a quality public education for all students to reach their individual fullest potential; and supports methods of financing a quality public education which are equitable, flexible, transparent, measurable, and effective.

- **Elections & Voting Portfolio Committee** – First Tuesdays at 11 am. Chair Jill Itzkowitz (jillitzkowitz@gmail.com)

Supports measures that ensure the right of all citizens to vote. Supports electoral systems that encourage participation, are verifiable and auditable and enhance representation of all voters.

- **Government, Finance, Taxation Portfolio Team** – meeting as needed. Chair Jack Young (young@sandlerreiff.com)

Supports measures that promote an effective and responsive state government, including the facilitation of informed understanding and public participation in government decision-making, with a focus on supporting an open unbiased process of redistricting.

- **Health Care Portfolio Team** – Fourth Fridays at 9:30 am. Chair Judy Butler (judyandhays@gmail.com)

Supports measures that promote the health and safety of all, ensuring access to a basic level of care, while controlling health care costs. Supports the constitutional right of privacy of the individual to make reproductive choices. Supports legislation granting the option for a terminally ill person to request medical assistance from a relevant, licensed physician to end one's life, with the proviso that such legislation must include safeguards against abuse for the dying and for medical personnel. Supports measures that provide for gun safety, given that abuse of guns has created a public health emergency.

- **Land Use/Transportation Portfolio Committee** – First Wednesdays at 9 am. Chair Anna Quisel (annaquisel@gmail.com)

Supports preservation and protection of critical land areas. Supports the reduction of vehicle miles traveled and a balanced, intermodal transportation system interconnected with land use and based on interagency and inter-jurisdictional coordination.

(Continued on page 9 Advocacy)

(Continued from page 8 *Advocacy*)

- **Money in Politics (MIP) Portfolio Team** – meeting as needed. Chair Chris Asay (Chrisasay@aol.com)

Supports campaign finance/MIP regulations that enhance political equality for all citizens, ensure transparency, protect representative democracy from distortion by undisclosed contributions and big money, and combat corruption and undue influence in government.

- **Natural Resources Portfolio Team** – meeting as needed. Chair Charlie Garlow (charliegarlow350@gmail.com)

Supports measures that promote an environment beneficial to life through the protection and wise management of natural resources in the public interest. Supports measures designed to preserve the physical, chemical, and biological integrity of the ecosystem with maximum protection of public health and the environment.

- **Social Policy Portfolio Team** – meeting as needed. Chair Linda Barnett (advocacylwvde@gmail.com)

Supports measures that ensure equal rights and equal opportunity for all, promote social and economic justice, and prevent or reduce poverty, thereby promoting self-sufficiency for individuals and families.



THANK YOU to DCRAC for funding the League’s *Welcome New Citizen Project*. ACLU Delaware and DelCOG for cosponsoring League Day in Dover this March. Thank you to all who made a financial contribution to our fall fundraiser for LWV of Delaware. Listed below are members and friends who have made a financial contribution for FY 2023-24 since the fall newsletters was published.

As for all our dedicated volunteers who contribute their talents and time throughout the year, we thank you: Our board members, Advocacy Corps, committee members of all our committees statewide, Election, Climate Change, Land Use/Transportation, Voter Services, Criminal Justice and POWER group, webmasters, and social media volunteers. We cannot survive as a volunteer organization without your support. We depend on you for the organization to thrive.

Edith Herron
Patricia Magee
Sarah Millbury-Steen
Lester and Christine Stillson
Patricia Todd
Trudie E. Thompson
Dr. Chandra Owens
Donald H. Drane

Donald H. Drane
Glenn Strohm
Helaine Harris
Marjorie Johnson
Carole and William Walsh
Catherine J. R Jones
Susan A. Herrmann
Robert Meyer

Delaware Coalition for Open Government
ACLU of Delaware
Delaware Community Reinvestment Action Council, Inc.
Jonathan Justice
Gloria Cooke
Susan & Mike Soltys

Judith Lanza
Lisa Locke
Eric Teder
Janice Hyland
Barbara Hedges-Goettl
Jill Itzkowitz
Kathleen Newdeck

WEDNESDAY, MARCH 20TH, 2024 BENEVOLENT COMMUNITY SUMMIT OF DELAWARE

Join us for an engaging and inspirational conference style Day Retreat.

This unique gathering will provide an opportunity to engage in conversations that matter, those that open us to bridging divides and unite us as we hear pieces of our story reflected in the stories of others in our community. We invite you to bring your lived experiences and birthright gifts to an unforgettable event with a goal to illuminate our shared humanity and build a brighter future for every Delawarean.

This Day Retreat is for all community members, change-makers, visionary leaders, human advocates, community organizers, clergy, educators, first responders, policy makers, thinkers and dreamers who want to make a positive difference.

The workshops will use the Circle of Trust © approach, created by Parker J. Palmer and the Center for Courage & Renewal. This summit is a unique opportunity to connect with fellow community members, share ideas, and inspire positive change in Delaware. And we are excited that the keynote address will be given by the honorable Dr. Eddie Glaude, Jr., Distinguished Scholar of African American Studies at Princeton University, a best-selling author, and passionate educator on the American experience.

Participants will gain skills and receive materials so that they can host Benevolent Community Conversations in their schools, organizations, houses of worship, agencies, and neighborhoods - Conversations important to the well-being of all Delawareans.



“The most valuable gifts are those that help to unite us.”

We Invite You to Partner with us by becoming a Sponsor of this Community Event!

Please Contact Lori Yadin at

director@createsafespace.org

REGISTER EARLY!

<https://www.eventbrite.com/e/benevolent-community-of-delaware-summit-2024-tickets-753855240317>

Event Venue:

Rollins Conference Center, 1131 N Dupont Highway, Dover Delaware

Event Time:

9:00 am – 6:30 pm

THE BENEVOLENT COMMUNITY INITIATIVE IS A NATIONWIDE GRASSROOTS MOVEMENT BY CREATE SAFE SPACE, INC.

A 501 c3 Charitable Organization

To Learn More Visit:

www.createsafespace.org



League of Women Voters of Delaware, Inc
League Day in Dover, Thursday, March 20, 2024

REGISTRATION FORM

*Democracy at a Crossroads:
Facing the Challenges of Disinformation and
Misinformation*

REGISTRATION DEADLINE MONDAY March 18, 2024

NAME (S) _____ \$40.00 EACH _____

ADDRESS _____

Telephone: _____ Email: _____

NAME (S) _____ \$40.00 EACH _____

ADDRESS: _____

Telephone: _____ Email: _____

CHECK NO: _____ TOTAL \$ _____

CREDIT CARDS ACCEPTED: Discover _____ Master Card _____ Visa _____ American Express _____

CREDIT CARD NUMBER: _____

CREDIT CARD EXPIRATION DATE: _____ SECURITY CODE (on back of cc) _____

After the morning session at Christ Church Parish Hall, South State and Water Streets, Dover, we are heading over to Legislative Hall to attend committee hearings.

Send this form with check or credit card information to:
League of Women Voters of Delaware
PO Box 7224, Wilmington, DE 19803-9995



You can also register online by clicking this logo:

Questions: Please call the League office at 302-571-8948 or e-mail lwvde@comcast.net.
A limited number of scholarships are available.

www.lwvdelaware.org

Calendar

Friday, March 1, 2023, 3:00 p.m.- 4:30 p.m.	ZOOM meeting	CLIMATE CHANGE COMMITTEE MEETING. Contact Peggy Schultz, Co-chair at schultz_peggy@yahoo.com to attend.
Tuesday, March 5, 2024, 11 a.m. – 12:30 p.m.	ZOOM meeting	ELECTION COMMITTEE MEETING. (statewide) Regular committee meeting contact Jill Itzkowitz, Committee Chair jillitzkowitz@gmail.com
Wednesday, March 6, 2024, 9:00 -11:00 a.m.	ZOOM meeting	LAND USE/TRANSPORTATION COMMITTEE MEETING Contact Anna Quisel at annaquisel@gmail.com to attend and to confirm time.
Wednesday, March 6, 2024, 6:00-8:00 p.m.	ZOOM meeting	LWVDE STRATEGIC PLANNING SESSION – all local league board and committee members are welcome. Contact Tiffany Lydon tgeyer5382@comcast.net
Thursday, March 7, 2024 5 – 7 p.m.	In person	DO MORE 2024 KICK OFF – ACROSS THE THREE COUNTIES. Check out information in this voter and details in future emails. LWVSC Iron Hill Brewery, NCC Applebee’s Churchman’s Road, Kent County location to be determined.
Wednesday, March 13, 2024 8:30 – 10:30 a.m.	ZOOM meeting	LWVDE ADVOCACY CORPS (legislative lobby group) For details or to attend, contact Advocacy Chair Linda Barnett advocacylwvde@gmail.com
Wednesday, March 20, 2024 9 a.m. – 1 p.m.	In person	LEAGUE DAY IN DOVER – DEMOCRACY AT A CROSSROADS: FACING THE CHALLENGES OF MISSINFORMATION AND DISINFORMATION. DETAILS IN VOTER.
Wednesday, March 20, 2024 9 a.m. – 6:30 p.m.	In person	BENEVOLENT COMMUNITY SUMMIT OF DELAWARE at Rollins Conference Center, 1131 North Dupont Highway, Dover, DE www.createsafespace.org
Friday, March 22, 2024, 9:30 – 11 a.m.	ZOOM	HEALTH CARE TEAM. Chair Judy Butler (judyandhays@gmail.com)
Wednesday, March 27, 2024, 10 -11:30 a.m.	ZOOM	CRIMINAL JUSTICE COMMITTEE MEETING. Chris Assay, Chair: Chrisasay@aol.com
Wednesday, March 27, 2024, 6:00-8:00 p.m.	ZOOM meeting	LWVDE BOARD MEETING Contact Tiffany Lydon, president, tgeyer5382@comcast.net Special Guest LWVUS Vice President Dianna Wynn
Tuesday, April 2, 2024 11 a.m. – 12:30 p.m.	ZOOM meeting	ELECTION COMMITTEE MEETING. Regular committee meeting contact Jill Itzkowitz, Committee Chair jillitzkowitz@gmail.com
Wednesday, April 3, 2024 9:00 -11:00 a.m.	ZOOM meeting	LAND USE/TRANSPORTATION COMMITTEE MEETING Contact Anna Quisel at annaquisel@gmail.com to attend and to confirm time.
Friday, April 5, 2024, 3:00 p.m.-4:30 p.m.	ZOOM meeting	CLIMATE CHANGE COMMITTEE MEETING. Contact Peggy Schultz, Co-chair at schultz_peggy@yahoo.com to attend.
Wednesday, April 10, 2024 8:30 – 11:30 a.m. (in session time)	ZOOM meeting	LWVDE ADVOCACY CORPS (legislative lobby group) For details or to attend, contact Advocacy Chair Linda Barnett advocacylwvde@gmail.com
Friday, April 26, 2024, 9:30 – 11 a.m.	ZOOM	HEALTH CARE TEAM Contact Judy Butler: judyandhays@gmail.com



Note: The League has a new address. The phone number and email addresses remain the same.

P.O. Box 7224
Wilmington, DE 19803-9995
(302) 571-8948

lwvde@comcast.net www.lwvdelaware.org <https://www.lwv.org>

