

# THE VOTER

**LWV** League of Women Voters of Tarrant County, Texas

Fall 2020

## President's Message

**Peggy Hendon**

What a time we are living in! So much is happening so quickly it's hard to catch your breath before something else crashes over us. Huge issues from voter suppression, racial equality, climate change, COVID-19, Presidential power and now the death of Justice Ruth Bader Ginsberg are confronting us every day.

We can work on all of these issues in our own ways. We may not see major changes in the immediate future, but we can build foundations. Those who come behind us can build on those foundations. Our most immediate focus is the work of educating voters about the candidates they will be choosing. I am of the strong belief that educated voters will make good decisions. We have those tools with our VOTE411.org and our Voters Guide. VOTE411.org is now live and I encourage you to tell your friends, neighbors and others about it. Our Voters Guide will be coming out early October. We will need to get printed copies distributed and again let everyone know about its availability online.

We can be proud of the number of new voters that have been registered by our Tarrant County league, COVID or not, using CDC procedures. We are not able to function at prior year levels, but we are functioning. Thank you to those who have been willing to do this.

As of this writing we have 33 days to the election. Our job is huge. Continue to encourage everyone to vote. Let everyone know about our tools for learning about the candidates and their positions.

Being part of this historic election is daunting and exciting at the same time. Keep calm and carry on!

## INSIDE:

	<b>New Members! - 3</b>	<b>In The News - 10</b>
<b>Editor's Note - 2</b>	<b>Why Vote Tool - 5</b>	<b>Where We've Been - 7</b>
<b>WANTED - 4</b>	<b>Committee work - 8</b>	

Growing Democracy: A Simple Tool

# Why Voter?

## EDITOR'S NOTE:

Welcome to the revamped League of Women Voters, Tarrant County, Texas newsletter, THE VOTER.

First I want to thank Board member Nancy Stevens, my predecessor, for all her hard work in putting together the League of Women Voters, Tarrant County newsletter. She has moved from her role as Editor of THE VOTER to help take care of her family during these trying times. She will still be involved but will be traveling much more.

I also want to thank the Board of Directors for making this opportunity available. I will do my best.

Special thanks to Janet Mattern who let me know it was possible to raise my vision.

There is a new look and feel to the newsletter and I've included some new features. We can call it LWVTC THE VOTER 1.0. One of the new features is new member bios with links to their social media they want to share. This gives members a chance to connect with each other and enjoy the company of like-minded individuals. And of course you can expect the regular updates on LWVTC committees and where we've been doing the work of protecting democracy and empowering voters.

I hope to cover topics like: "Why elections for judge matter", "What does being nonpartisan mean?", "County government explained" and "Membership skills databases" to name a few.

The League of Women Voters is lucky to have a highly educated membership. I encourage any member to submit a work. It just might get published! Our membership is diverse and I want to pull in that diversity and have conversations about how we can better support each other in the continuing struggle for civil rights.

If any of you would like to help shape this newsletter and are able to commit a little time, please reach out to me.

In the end, I hope it becomes something members want to contribute to.

To new beginnings,



Kelley Smith



### League of Women Voters of Tarrant County Board of Directors 2020-2021

#### Peggy Hendon:

**President,** League of Women Voters, Tarrant County, Texas

**Treasurer:** Peggy Harwood

**Secretary:** Janet Mattern

**Vice President, Voter Services:** Erin Merkel

**Vice President, Programs:** Pamela Wright

#### Board of Directors:

Vickey Ward, Pat Cheong, Dawn Ellison, Nancy Stevens, and Nancy Kirkland.

#### The League of Women Voters, Tarrant County Appreciates the Continued Support of Our Community Sponsors:

**BNSF Railway**

**The Hon. Lou Burnam**

**The Law Office of Rick Ward**

**The Law Office of Mary Beth Garcia**

**Leeham Properties**

**Margaret Martin**

**Ruthann Geer**

**Judy Wood**


**Linda Pavlik**

#### Office Hours:

T W Th, 8:30 a.m. - 12:30 p.m.

#### Mailing Address:

P. O. Box 100175, Fort Worth, TX 76185

 **Phone:** 817-348-VOTE (8683)

 **Email:** [lwvtarrant@gmail.com](mailto:lwvtarrant@gmail.com)

# WELCOME NEW MEMBERS

## We Are Glad You're Here!



### Vicky Vegh — Fort Worth

Vicky moved to Fort Worth in 2016. Born in Colorado Springs, CO and raised in Corpus Christi, she attended college at Texas A&M. She has two degrees from A&M, one in English and one in Theatre Arts with a minor in Anthropology. She has had many jobs from Bank Teller to Substitute Teacher to Restaurant Hostess but they all went to paying for her hobbies which include acting, improv, writing, crafts, and video games. Currently she is working on her first novel! She is also a proud member of the American Humanist Association.

Ask her about the band of 300 Pirates!

*"I joined up because for the last few elections I've been using your voter guides to get to know the candidate's and the issues I'm voting for and after RBGs death I just wanted to do more to ensure correct and factual information is available to the public at large when it comes to politics. As Jefferson said, "An educated citizenry is a vital requisite for our survival as a free people."*



### Denise Sebaly — North Richland Hills

Denise is a Registered Nurse (23 years) and a new LPC (5 years) recently located in North Richland Hills. She has three adult children, two live in the area and a son at the Great Lakes Naval Station.

She was born and raised in East Los Angeles, moved to Marquette Michigan to finish raising her kids. She finished her graduate studies and has landed here where life's winds have placed her.

Getting involved where ever she goes Denise has been a member of the League of Women Voters in Marquette, MI in 2018 and 2019 and has volunteered in various nonprofits including BBBS, Girl Scouts, Sexual Assault

Response Teams, The Well-Armed Woman for self-defense, EAGALA.

Denise is bilingual and currently working from home.



### Kelley Smith — Arlington

Kelley grew up near Dayton, Ohio and graduated from Wright State University with a bachelor of Arts in Social Work. She got married to Terry and moved to Arlington soon after. After attending the University of Texas, Arlington for master's work in Public Administration and Social Work, she decided it was important for her to be at home raising her two daughters. She has worked at various nonprofits over the years. She is excited to be here!

*"I joined the League of Women Voters because I feel like the lady in my social media Icon."*

Get in touch with Kelley on [Email](#) or on [Twitter](#)

# MORE NEW MEMBERS

Tracy Griffith - Arlington	Jan Stolze - Southlake	Tiffany Roots - Fort Worth	Patrick Yonker (Vicky Vegh's Spouse) - Fort Worth
Brenda Guilloud - Fort Worth	Melanie Stolze - Southlake	Gretchen Edwards - New arrival	Patricia Hilborn - Haslett
Jenee Harwell - Fort Worth	Darlene Taylor - Grand Prairie	Julia Wilson - Fort Worth	Vicki Dixon - Arlington
Charlotte Hudson - Arlington	Harli Dollinger - Fort Worth	Vick Vegh - Fort Worth	
Keye McCulloch - Benbrook	Katherine Snow - Fort Worth		



## Who runs our elections? WE DO!

### *Poll Workers Needed!*

- *Be a part of democracy this year and sign up to be a poll worker.*
- *Spanish and Vietnamese speakers are greatly needed.*
- *For information on how to be a poll worker, [click here](#).*

#### You are eligible if you:

- Are registered to vote in Tarrant County
- Do not hold an elected office or are not the employee of an elected official
- Enjoy interaction with the public
- Are detail-oriented, able to take direction well and not easily distracted



**The Editor of THE VOTER is looking for members to fill out her staff.**

**Any member willing to help shape THE VOTER is invited.**

**Contact: [THE.VOTER.LWVTC@gmail.com](mailto:THE.VOTER.LWVTC@gmail.com)**

**Kelley Smith**



# Why Should I Vote?

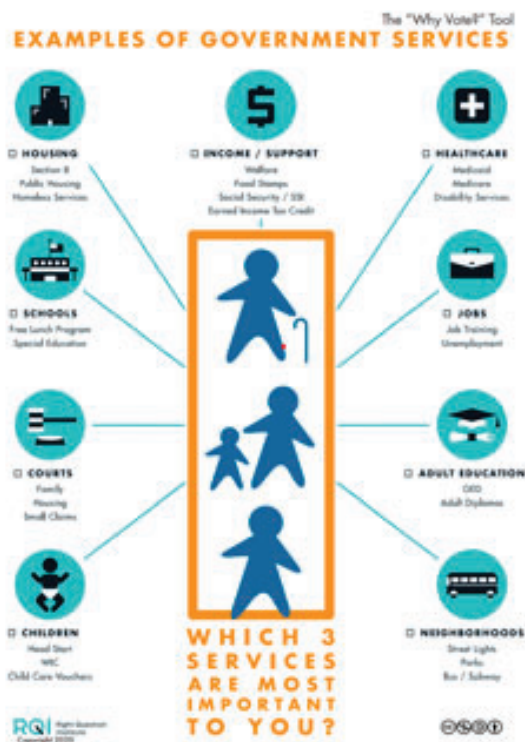
## Growing Democracy: A Simple and Effective Tool

### The Why Vote Tool

The Why Vote Tool is a way for people to think about connections and to see for themselves the value of voting. Instead of being told simply to vote we should focus on having people name the value of voting. You can use this resource with clients, adult learners, students, neighbors, and anyone else you would like to engage to vote. Invite them to think about the value of voting by asking them to choose three services that are important to them.

The tool can be used with just about any group, even the youngest voters. The barriers to voting may be different for each group and with new voters, some may feel unsure simply because they never voted before.

Everyone can use this on just about any level. It can be used to help talk about voting to individuals and groups. Conversations could go on for an hour or just a few minutes. Whatever there is time for. It helps make the solid connection between voting and the world we live in.



The exercise helps potential voters begin to see that voting is a self-advocacy role they can and want to play. The "Why Vote?" Tool allows people to:

1. See the connection between specific public services they rely on and decisions elected officials make.
2. Name for themselves why they want to vote once they see that connection.
3. Ask questions about the actual process of registering and voting.
4. Connect with efforts that will help them register and vote.

The Right Question Institute (RQI) is a nonprofit educational organization offering a simple, powerful strategy that builds people's skills to ask better questions, participate in decisions that affect them, advocate for themselves, and partner with service-providers. RQI's innovative methods are delivered through educational institutions and organizations, health care organizations, social service organizations, community-based organizations, and public agencies all over the country and beyond.

Reprinted with permission

20



20

## New Feature

Google Calendars for Groups

20

Organizers of events can add an event to the Calendar

20

Members can see what events are going on right now or next month

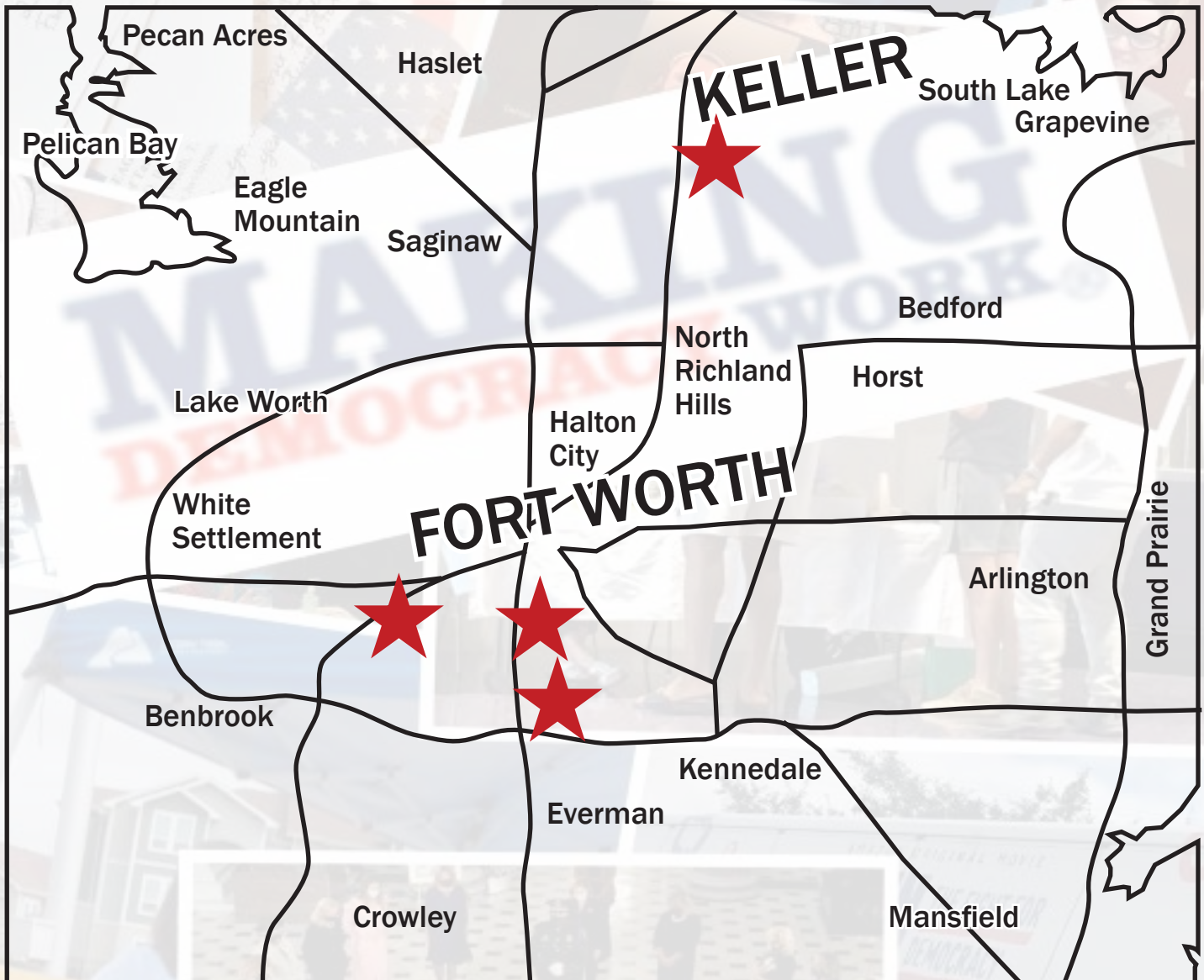
**Test it out here!**

Yes you can trust the link. You know where I live.

Where to find the League of Women Voters:  
<https://my.lwv.org/texas/tarrant-county>



# WHERE WE HAVE BEEN



# COMMITTEE REPORTS

## ENVIRONMENT COMMITTEE

[Click here](#) (link takes you to another site) to see the schedule and instructions for attending one of the four public meetings in October about these dangerous routes. Even if nuclear waste is not your priority, it might be interesting to attend a public meeting to see about lack of government transparency.

---



# BOOTS ON THE GROUND



## Postcards To The Edge

### LWV Pledge to Vote Drive

The Tarrant County league organized an initiative to encourage voter participation in Tarrant County's low voter turnout precincts.

Precincts with less than 30% voter turnout received postcards. We sent out [830](#) handwritten postcards joining in efforts towards the LWV "Pledge to Vote" drive.

We appreciate the energy and commitment from league volunteers who wrote personal notes and addressed each card. The postcards will be mailed on October 5th to reach the voters prior to the start of Early Voting.

Where can our league help encourage voter participation and improve democracy? Bring your ideas to the board, let's talk about it!

We wish to extend a big THANK YOU! to all volunteers who helped to make this work possible.

Janet Mattern

# TARRANT COUNTY LEAGUE OF WOMEN VOTERS IN THE NEWS

## Keller News

### League of Women Voters hosts City Council Candidate Forum

Post Date:09/15/2020



Not sure whom you're voting for in the Nov. 3 Keller City Council election? Northwood Church and the League of Women Voters will be hosting a candidate forum featuring the City Council candidates for Mayor, Place 5 and Place 6 at 6:30 p.m. Thursday, Oct. 8 in the church's main auditorium at 1870 Rufe Snow Drive. Those who choose to attend in person should be aware that the church requires masks be worn inside their buildings.

As we have in the past, city staff will be on hand to live-stream and record the candidate forum so that residents have the option to

watch it on the city website or their local cable channel.

To ensure that everyone has an equal opportunity to submit questions for this year's forum, questions will be accepted through an online portal through the end of day (11:59 p.m.) **Monday, Oct. 5.** [Emphasis, Voter Editor] Forum facilitators with the League of Women Voters will use questions submitted online—as well as questions submitted in person at the event—to help Keller residents learn more about the candidates in each race. To submit a question, visit

[www.cityofkeller.com/forum](http://www.cityofkeller.com/forum)

[See Keller News for more information](#)



# VOTE411.ORG goes live October 1st



We each have the power to increase voter turnout. Make sure your friends and family are registered to vote.





# JOIN THE LEAGUE OF WOMEN VOTERS



Join

**LWV** LEAGUE OF WOMEN VOTERS<sup>®</sup>  
OF TARRANT COUNTY

Click Here

TODAY!

# Tarrant County Voters we need you to work at the polls!

## Tarrant County Elections

### POLL WORKERS

#### WHAT IS AN ELECTION WORKER?

Election Workers work at the polls on election day and during early voting to ensure voters can exercise their rights in an honest and well-organized manner. Tarrant County needs approximately 2,500 Election Workers for each general election.

#### WHO CAN BE AN ELECTION WORKER?

You are eligible if you:

- . Are registered to vote in Tarrant County
- . Do not hold an elected office or are not the employee of an elected official
- . Enjoy interaction with the public
- . Are detail-oriented, able to take direction well and not easily distracted

#### WHEN ARE ELECTION DAYS AND WHAT ARE THE HOURS WORKED?

General elections are held each year on the first Tuesday after the first Monday in November. Primary elections are scheduled for the first Tuesday in March in even numbered years. Uniform elections are held on the second Saturday in May. Early Voting begins up to 17 days prior to any election and continues through the fourth day prior to that election.

Election Workers arrive at the polling place at 6 a.m. on election days and must remain until the polls are closed and results are called in or transported to Election Central. Polling places for election day are always open 7 a.m. to 7 p.m. Early voting hours vary from election to election.

Early voting for the general election starts on October 13<sup>th</sup>, 2020 and ends on Octobers 30<sup>th</sup> before the November 3<sup>rd</sup> election.

#### WHAT TYPE OF PEOPLE WORK AS ELECTION WORKERS?

Just about everyone! We have senior citizens, baby-boomers, professionals, High School Students, self-employed individuals and those that are retired. This creates a highly diverse workforce, just like Tarrant County! We are also looking for workers who, in addition to being fluent in English, can also speak other languages, especially Spanish and Vietnamese. If you are fluent in another language, please indicate this on your application form.

#### ARE ELECTION WORKERS PAID?

---

Election workers are paid for the days they work during the election process. Training compensation is also provided to poll workers.

#### HOW DO I APPLY?

You have three ways to apply:

1. Complete the online form by [clicking here](#)
2. Go online, as in the first option, and print out the document, fill it out and then mail it to:
3. **Fax** the completed form to us at **817-850-2330**

Poll Workers  
2700 Premier Street  
PO Box 961011  
Fort Worth, Texas 76111