



Phone: 559-226-VOTE

Web site: LWVFresno.org

The *Fresno*
VOTER



**Tuesday, November 6
Election Day**



**Tuesday, November 13
Regular Board Meeting
(date changed from 11/6 due to election)**

League Office, 5 p.m.

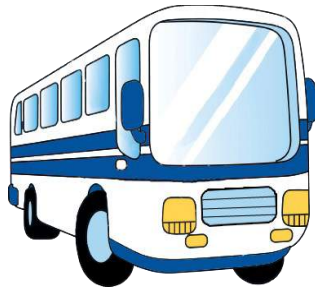
**Monday, December 3
Independent Police Auditor
Lunch & Learn
See page 8**

**Sunday, December 9
Holiday Party, 2 p.m.
See page 8**

**** * REGULAR BOARD
MEETINGS ARE NOW HELD
ON THE FIRST
TUESDAY OF THE MONTH,
5 p.m., LEAGUE OFFICE.
MEMBERS AND GUESTS
WELCOME**

Transit meeting yields positive outlook

by Francine Farber



Good news about Fresno County: we are the first in California and in the nation to provide electric vehicle solar charging stations in each community served by electric buses. In addition, electric Chevy Volt cars will soon be transporting people in some rural areas as a way to personalize service in areas with low-ridership buses. Fresno County Rural Transit had begun a demonstration project in the unincorporated village of West Park, just

south of Fresno’s sphere of influence, but ceased it after about 10 months due to such low ridership that it was actually costing FCRT about \$110 per rider. The Volts will be able to handle small numbers of riders much more cost effectively.

This interesting information was discussed at the LWVF transit lunch and learn last month. Long-time and new members joined together to hear the county’s rural transit director Moses Stites, Jeff Long from Fresno FAX, and Amy Hance from Clovis Transit discuss the status of local services including planned innovations and the new services anticipated from SB1 money if Prop 6 to repeal the gas tax is defeated.

Long noted that FAX’s 16 routes and parallel paratransit service made 9.7 million trips last year, an increase of 7% after a spate of falling ridership for several years. All buses are now alternate fuel vehicles; soon FAX will be changing to electric buses through SB1 funding. FAX’s full budget is around 45 million dollars. Students at Fresno State and Fresno City College get free bus service when they swipe their ID’s as they enter a bus. The read-out from the ID is referred to the colleges for payment at the bargain price of \$1.10 per ride compared with \$1.25 for other riders. Last year FSU students racked up about 15,000 trips per month, while FCC students scored about three times that number.

Clovis Transit head Amy Hance noted that last year they made 60,000 paratransit trips and about three times that number on their three fixed routes. They are piloting two electric buses. In 2019 they anticipate opening a building which will house a new Fresno County Library, an enlarged Senior Center, and a transit hub for administration and transfers.

President's Message



I hope you are enjoying the Weekly Email Newsletters we began sending about a month ago. They're set to arrive each Sunday, a day when we usually receive few emails, and in time to allow you to plan to attend the upcoming events you're interested in. The emails contain embedded links so you'll find addresses, directions, and even more information about the events. We've also posted links to the weekly email newsletters on our website, so you can see them there and subscribe if you are not already receiving them.

Collating events for those newsletters reminds me of the many ways our League engages in the community regularly. But the amazing part is that we are involved in just as many community events that are NOT in our weekly newsletter. Our League members attend numerous meetings with elected and appointed officials. They gather with issued-centered networks; attend public forums, ribbon-cuttings, regular government meetings, and even behind-the-scenes strategy sessions every single week of the year.

Most of us did not join the League with the all the knowledge we needed to participate in these activities. We learned by getting involved, and eventually, we became important contributors to these community activities. I encourage you to do the same. Jump in to something you're interested in. With League support, you can change our community for the better.

In October, the LWVF Education Committee published its study, "Charter Schools in Fresno." The ten-member committee, chaired by Kay Bertken, spent 18 months doing what Leagues do: they studied, they came to consensus, they've taken a position, and now they are ready to act. I know that we will see them speaking publicly when charter schools issues are on the agenda.

Also last month filming began on a short PR video about the League, produced by students in the Mass Communications and Journalism Department at Fresno State. The student production team is eager, skilled at their craft, and delightful to work with. We look forward to using their work to help us more widely market the League. Thanks to Terri Figgs for shepherding this project.

Finally, we welcome Asya Sorokurs, a soon-to-be lawyer, who has volunteered to do Internet research in support of the League's General Plan network group.

- *Marianne*

MEMBER NEWS

Please edit your roster



Follow us on Facebook

New Members

Marie Lambe

6687 North Channing

Fresno, CA 93711

970-1761

Lambe4@comcast.net

A donation to League makes a great birthday or holiday gift or as a memorial. Please make checks out to

LWVF

1345 Bulldog Lane Fresno, 93710

The League is a 501 c (3) non-profit organization so your dues payments are tax deductible and gratefully accepted.



The Voter is a monthly publication of the League of Women Voters of Fresno.

Mailing Address: 1345 Bulldog Lane, Fresno, CA 93710

Volume 77. No. 11 Editor: Francine M. Farber

Education

by Kay Bertken



The Board gave Superintendent Bob Nelson a unanimous positive evaluation, but was harsher in its self-evaluation. Members rated themselves

below average on “operating openly with trust and integrity” and for communication “that is honest and free from distrust and coverup.” Interestingly, it will be a new board that has to implement improvements.

Results have been impressive, with statistically significant improvements in math in grades 3,4,5,6,& 8 (not 7) and English language arts achievement in grades 3,4,5,7,and 8 (not 6), compared with non PLI classrooms. Improvements were significant among African American, Hispanic and Asian students when compared with those groups in non PLI classrooms, but not for white students. Evaluation of the program also showed significant increases in student collaboration over time and improved scores among teachers with two training sessions compared with just one—indicating the importance and effectiveness of training in the use of the tools.

Trustees asked why this was not being implemented across the district immediately. The staff pointed out that teachers had to be willing partic-

(continued on page 4)

One of the really positive features of FUSD school board meetings is the opportunity to hear from representatives of the Student Advisory Board and the middle school student ambassadors. The advisory board is made up of representatives from district high schools. A member gives a report at each board meeting. The Student Advisory Board annually elects two student representatives plus alternates who sit with the trustees and vote with the board on many issues.

Leadership students from a different middle school each week attend the meetings and greet audience members as they hand out agendas. They speak at the microphone and describe their school activities and their future plans, all of which are delightfully ambitious.

Year two of the District’s Personalized Learning Initiative (PLI) was reviewed in September. That initiative has involved select teachers being trained to integrate various computer applications into their instruction, some of which facilitate cooperation and collaboration among students. The first year was 2016-2017 and involved 202 elementary and middle school teachers, each of whom had full sets of classroom computers and were trained in the use and incorporation of various online programs. Last year increased

the num-

Next Board Meeting November 14 at 5:30 p.m.

In person and streaming on your computer

BALLOT PROPOSITION RECOMMENDATIONS



Pros and Cons for the eleven ballot propositions have been issued by the State League. Its recommendations for the propositions follow:

- ◆ **Proposition 1 Veterans and Affordable Housing Bond: Yes**
- ◆ **Proposition 2 Homeless Housing Bond: Yes**
- ◆ **Proposition 3 Water Bond: No**
- ◆ **Proposition 4 Children’s Hospital Bond: No**
- ◆ **Proposition 5 Property Tax Amendment: No**
- ◆ **Proposition 6 Gas Tax Repeal: No**
- ◆ **Proposition 10 Local Governments Authority to Enact Rent Control: Yes**
- ◆ **(NO POSITION on Props 7, 8, 11, 12. Prop 9 has been withdrawn)**

Voter Services

by Liz Shields



Voters need to reregister if they have moved, changed their name or wish to change their party affiliation. Voters who missed the October 22 deadline may cast conditional ballots at the Elections Office, 2221 Kern Street from now until Election Day or go to a polling place on Election Day, November 6 and vote using a provisional ballot.

League members have registered about 700 high school students during the past month as well as re-registered residents of retirement homes who have moved there since the last election. In addition mem-

bers have made presentations on the propositions to local groups in churches, retirement homes and libraries.

Our phone bank work for the Elections Department has started already in response to an overwhelming number of phone calls



from anxious voters who had not received their vote-by-mail ballots. Following instructions on the sample ballots mailed earlier, voters who had not received their ballots by Oc-

tober 15 called to report that their ballots had not arrived. Some ballots were mailed in response to the phone calls but many voters were told to remain patient. This situation should alert both the Elections Department and the Post Office to take steps to avoid such voter anxiety in 2020 when ALL voters will receive vote-by-mail ballots.

Our work unfolding ballots for the Elections Department will continue until after the election. We have been asked to supply at least 10 -12 people per shift so I am still recruiting volunteers for the work.

Please call or text 559-578-5670, or email me eliza44@yahoo.com to make arrangements to help with this major project for the League.

EDUCATION

(continued from page 3)



participants and that effective implementation required that support staff not be spread thin. While uninvolved teachers were watching and some were volunteering to participate in the next cohort, the program was not spreading itself.

Other developments include the purchase of the old Juvenile Hall facility from the County and the progress of the E Learning Initiative. The facility on Ventura Avenue has been empty and in poor repair for years—an eyesore according to trustees who visited it in anticipation of this possible purchase. The board was unanimously enthusiastic about being able to turn this sad property into a new alternative education site that would offer hope and help to struggling students and bright new buildings that would benefit the neighborhood.

The E Learning Initiative is aimed at providing home use computer tablets for students—24,000 of them for three years. The first phase is underway giving out tablets to interested TK, pre-K, Kinder, and 1st grade students plus 9th—11th graders. The 9th—11th graders will have access to Kahn Academy PSAT and SAT prep programs in addition to other applications. To get a tablet, parents need to consent to be trained.

kayb@csufresno.edu

GET THE FACTS
BEFORE YOU VOTE
VotersEdge.org

CCLS

Central California

Legal Services

PATIENCE MILROD

Executive director

2115 Kern Street, Suite 1

Fresno, CA 93721

O: 559.570.1214 * C: 559.970.6020

PMILROD@CENTRALCALLEGAL.ORG

Behavioral Health

by Carolyn Evans



Prior to its October meeting the Fresno County Behavioral Health Board conducted a Public Hearing on the Mental Health Services Act Annual Update 2017-18. Department of Behavioral Health staff explained the process and introduced the update, focusing on additions to the previously adopted 3-year plan. The updated plan is comprehensive and includes all programs funded by the Act. Members of the community had an opportunity to comment on individual programs and on the plan as a whole. During its regular meeting, the Board voted to recommend to the Board of Supervisors the approval of the Annual Update.

Included in the quarterly Housing Report from DBH was a discussion of the recommendations from the Corporation of Supportive Housing, which came as a result of its evaluation of Fresno County supportive housing projects. Board members were concerned about some of those findings and were pleased to learn that the Department is already addressing the deficiencies that were found.

The greatest concern is at the Santa Clara property, which is located near Poverello House and is surrounded by homeless encampments and individuals who are struggling with multiple social issues. Training for housing staff and property managers, focusing on Housing First and Voluntary Service Model, is a high priority. Following a site visit to one of the supportive housing projects, the Board was happy to learn that already staff feel more supported by the Department and more assured about their responsibilities to residents.

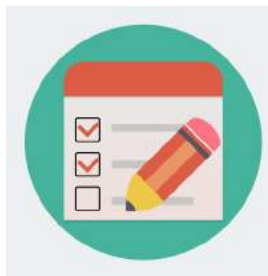


More collaboration has begun between property managers, supportive services staff, clinical staff, and Department leadership. Expanding staffing hours to 24/7 was recommended and is under review, but will be difficult due to staff availability and budget constraints.

Included in the Act's Update is the creation of a

“Supportive Housing Institute” to identify and to support housing developers who would be willing to work with the Department on building and managing permanent supportive housing. Permanent Supportive Housing is one of the greatest needs in our community and is the most difficult to achieve.

A community mental health forum was sponsored by the Board in Selma last month and although there were few attendees, they were expressive of their mental health and substance use disorder needs. Overwhelmingly they spoke about the need for affordable supportive housing for people with these special needs. There is none available in Selma.



The Board has completed a self-evaluation, and now is requesting evaluation from the community. If you have attended a board meeting or have any comments for the improvement of the Board, please complete the short survey.

<https://www.surveymonkey.com/R/BHBPublicEval>

The Department's Cultural Competency Committee heard from a consultant who is designing a new Competency plan. Her plan has five components:

- ◆ Who receives services
- ◆ What services do they receive
- ◆ From whom do they receive these services
- ◆ What is the cost of the services
- ◆ What are the outcomes of the services

For each component statistical information has been amassed including age, gender, ethnicity, race and language as well as other categories. She also shared two surveys — one for staff and the other for clients — to elicit feedback on cultural appropriateness. A draft will be ready by December.





Professors of Medicine now find themselves teaching the practice of medicine in the digital age. How this will change the curriculum of postgraduate training has not been fully appreciated, even by end-user computer nerds like me. But it definitely needs overhaul, and I remain a steadfast observer of the various opportunities, loopholes, and failures of electronic medical records (EMR's).

Prescription by computer

One aspect of modern EMR's and the first federally required function of digital medicine is one of the crankiest: e-prescribing. Patients no longer need to carry around little pieces of paper with illegible handwriting to fill prescriptions. Physicians' EMR's have access to complete drug databases with suggested dosing schedules and warnings about drug interactions. Previous prescriptions are displayed and can be easily renewed or modified. Coverage status of the medication by the patient's insurance is reported. A click sends the prescription via a secured internet pathway to the patient's pharmacy, whose routing data is stored and updated as needed in the office EMR. Proprietary pharmacy computers process the data, and even translate the patients' instructions into their preferred languages as needed. It is almost magical. What is not to like?

A lost opportunity

When the impressive technology of e-prescribing was in design, opportunities for standardizing pharmacy policies and for improving the communication between clinicians and pharmacists were lost. The most critical of these oversights was making e-prescribing a one-way street. The pharmacies do not talk back. They do not send data on patients' completed fills or non-fills (and the reasons for the non-fill) of individual physicians' prescriptions. That should be a minimum expectation from a complete digital pharmacy record.

The ideal goal would be a complete pharmacy record of *all* of the patients' fills, with a graphic display and searchable database. That has been the case with VistA, the VA Health System computer that went on-line in 2001. How else can we deal the costly epidemic of non-adherence to medications? How else can the drug interaction module provide accurate information?

Questions persist

E-prescribing technology might have, but did not, resolve a wide variety of issues. How do we terminate prescriptions? Can one physician terminate a prescription of another? Does the newest prescription for a given drug take precedence over all priors? How do we coordinate refill dates so that patients can pick up all their meds at the same time, despite the fill-number constraints applied by pharmacy benefit managers? How do we provide longer lasting fills (for better adherence) for patients who require frequent laboratory monitoring? When, if ever, is prescribing a medication for a future target date a better alternative than providing a dispense and refill number? And so on.

Mistakes are easy

Physicians in residency, most of whom now have never handwritten a prescription, often lack an understanding of the computer's ability to stubbornly present incorrect and easily replicable data, including prescriptions. As a result, I spend a couple hours every week correcting prescriptions with internally contradictory directions, incorrect dispense or refill numbers, or outdated messages to the pharmacy. It is likely that many experienced physicians in practice are similarly unprepared for e-prescribing. It is a matter of education. There is a simple message: do not re-iterate a prescription with a click until you have read it and imagine that you have written it and received it.



As with EMR's, a lot of work remains to be done in e-prescribing. It will require computer application education and invigoration of the relationship between doctors and pharmacists.

Drbertken@comcast.net

Priority Report

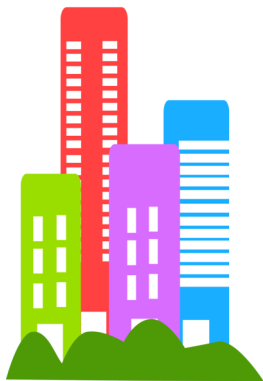


Reports on the work of Priority Committees established at the Program Planning meeting last February

HOUSING

The formation of an Affordable Housing Coalition was discussed at a meeting with Preston Prince, director of the Housing Authority, Keith Bergthold, director of Metro Ministry, and Marianne Kast and Nyla Zender. The model for discussion is one used by grass roots groups called “Yes In My Back Yard”, or YIMBY. The groups include builders, developers, financial representatives, government officials, interested non-governmental

organizations, teachers, young people and others who might wish to address the crisis due to the lack of affordable housing.



Another meeting is being held as this issue of the Voter goes to press in order to continue the coalition-building efforts.

Next meeting: to be announced nylajz@comcast



CIVIC ENGAGEMENT



As described in the President’s Message (page 2) the committee has a number of projects that are on-going.

They include:

- ◆ the weekly e-mail newsletters
- ◆ the PR video designed by Fresno State communication students
- ◆ development of a networking group around the issues raised by Fresno County’s General Plan.

Next meeting: To be announced fourkasts@gmail.com)

EDUCATION

Comments from recipients of the draft Charter School report were reviewed. A final version of the report has been sent to committee members and the LWVF board and may be read on our web site.



The report has been given wide circulation including superintendents of all school districts in Fresno County, local media, and educational organizations throughout the state. After the election when a new state Superintendent of Instruction is in place, a Lunch & Learn workshop will be held to discuss the report’s findings, issues and concerns.

Next meeting: to be announced kayb@csufresno.edu

Student Unit

by Lisa Bryant



The school year is back in full swing at Fresno State and the Student Unit has been active on campus in the new school year. Officers were elected for the 2018-2019, including Gurleen Mander as student president, Isabel Hernandez as vice president, and Graciela Sierra Moreno as secretary/treasurer.

The Student Unit joined forces with student government (ASI) for National Voter Registration Day and held an exciting event, “Take Timeout to

Vote”, featuring Fresno State mascot Timeout and a visit by our resident bull-



dog, Victor E. Bulldog. The registration table was busy throughout the event and Fresno State was one of the top four California State Universities to register students on NVRD.



On October 31 the Student Unit sponsored an event to raise awareness about domestic violence and the renewal of the federal Violence Against Women Act, featuring national and local speakers.

lbryant@csufresno.edu

Water News

by Diane Merrill



Currently there is a great deal of water planning activity going on in Fresno County and in other areas of California where groundwater has been critically overdrafted. Following passage of the Sustainable Groundwater Management Act (SGMA) by the California Legislature in 2014, local governments and water agencies in critically overdrafted areas were required to form Groundwater Sustainability Agencies. They are now in the process of developing detailed Groundwater Sustainability Plans in advance of the January 31, 2020 SGMA deadline.



The Kings Groundwater Sub-Basin, which covers the valley areas in the eastern and central areas of Fresno County, and parts of

Tulare and Kings Counties, contains seven sustainability agencies. A Sustainable Groundwater Planning Grant from the California Department of Water Resources has been obtained. The grant provides a portion of the funding needed for the seven agencies to develop their individual plans and to implement a coordinated sustainability plan for the entire Kings Groundwater Sub-Basin. Public outreach is a required part of the process.

Most LWV Fresno members live in the North Kings agency, which includes the cities of Fresno, Clovis, and Kerman, CSU Fresno, and much of the Fresno Irrigation District. Our league has signed up as an interested party in the sustainability plan development process and has attended meetings of the North Kings Agency Advisory Committee.

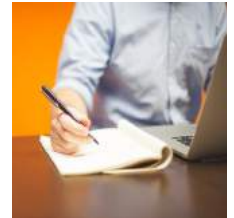
Note: The "Review of and Comments on League Positions Relative to Water, Agriculture, and the Environment" is one of a number of new documents posted on the League of Women Voters of California website in early October. To view the documents, go to Our Work, then to Natural Resources, and finally to California Water Resources.

TWO SPECIAL EVENTS

Lunch & Learn with John Gliatta
Monday, December 3 * 11:30 a.m.

John Gliatta was appointed in 2017 as Independent Police Reviewer for the Office of Independent Review, which provides a neutral, third-party review of police policies, procedures, strategies, and internal investigations.

High Sierra Grill
2003 West Bullard * Fresno
Corner of West and Bullard
No host lunch available



Holiday Party

Sunday, December 9
2:00—4:00 p.m.

Home of

Christine and Howard Watkins

1785 West Dovewood * Fresno

Enjoy Good Food and Good Friends



Members and Guests Invited



MOTORS
SOLD • REPAIRED • REWOUND

PH (559) 650-1153
FAX (559) 650-1186



253 FULTON ST.
P.O. BOX 446
FRESNO, CA 93709

North of Herndon &
East of Fresno

530 E. Herndon Ave., Ste. 104
Fresno, CA 93720-2990

Frederick J. Kruger, D.P.M.
Diplomate, American Board of Podiatric Surgery
Diseases, Injuries and Surgery of the Foot

(559) 447-9040
(559) 447-9042 Fax

By Appointment

Be a Voter sponsor—\$100 per year—226-8683



This space sponsored by
Joan Lipton

Merci



NELSON

PHYSICAL THERAPY

Larry Nielson, P.T., O.C.S.

2747 W. Bullard, #105, Fresno, Ca 93711
Phone: 559.261.1425 Fax: 559.261.4573

HEBERGER & COMPANY

AN ACCOUNTANCY CORPORATION

John D. "J.D." Heberger, CPA

5090 North Fruit Ave., Suite 102 (559)227-9772

Fresno, CA 93711-3062 www.hebergercpa.com

E-mail: jd@hebergercpa.com

HELPING TO PRESERVE

FRESNO'S PICTORIAL HISTORY



Howard K. Watkins

Fresno's Photo Laureate

www.watkinsphotoarchive.com

Donations to Central Valley Regional Foundation

NOTE: HKW Photo Archive Fund

5260 North Palm, Ste. 122, Fresno, CA 93704

Contact: 1785 W. Dovewood Lane, Fresno, CA 93710

355-7040 * howardkwatkins@gmail.com



Investment Services Retirement Planning Income Strategies

**Capital Financial &
Insurance Services, Inc.**

Robert H. Gunning

Financial Advisor
CA Insurance Lic # 0E61490

1318 East Shaw Avenue, Suite 200 • Fresno, CA 93710
Cell (559) 999-0773 • (559) 222-7441 • (800) 726-2732
Fax (559) 221-6519 • rgunning@ifgrr.com

*** Alice Powell**

Member since 1982

***Frank Powell**

Member since 1999

In support of the

League and the Voter



Be a Voter Sponsor - only \$100 per year for 12 issues, both print and digital



League of Women Voters Fresno, Inc.
 1345 Bulldog Lane,
 Fresno, CA 93710
 RETURN SERVICE REQUESTED

Non-Profit Organization
US Postage Paid
Fresno 93706

Permit # 896

BOARD OF DIRECTORS

President	Marianne Kast
Executive Vice President	Nyla Zender
Vice President, Voter Services	Elizabeth Shields
Director, Voter Services	Sue Goldman
Secretary	Marie Slater
Treasurer	Terri Figgs
VP Natural Resources	Vacancy
Director, Water	Diane Merrill
Director, Education	Kay Bertken
Director, Program Planning	Pat Campbell
Director, Student Unit	Lisa Bryant
Director, Membership	Dolores O'Neal
Voter Editor	Francine Farber
<hr/>	
Webmaster:	Jacque Canfield

Democracy is not a spectator sport

JOIN THE LEAGUE OF WOMEN VOTERS!

Men and Women age 16 and above Making Democracy Work

MISSION: The League of Women Voters is a nonpartisan political organization that encourages the informed and active participation of interested individuals and influences public policy through voter education and advocacy on issues. The League does not support or oppose any candidate or political party.

DIVERSITY POLICY: There shall be no barriers to participation in any activity of the LWVF on the basis of race, creed, national origin, gender, sexual orientation, disability, or socio-economic level.

What do you get when you join the League? All for one fee, you become a member of the Fresno, California and National Leagues and receive their newsletters. You may participate in League studies of issues; receive leadership training; hone your public speaking skills; become knowledgeable about local and state issues; learn more about government, natural resources and social policies as your time and interests dictate. You will also meet some interesting and friendly women and men who represent diverse backgrounds but find common ground in keeping abreast of current issues.

Yearly Dues Individual - \$70 ~ Family - \$100 (2 members, same address) ~ Student - Subsidized

Please send your check payable to the League of Women Voters, Fresno, with registration form (below), to: LWVF, 1345 Bulldog Lane, Fresno, CA 93710.

.....
 Name _____ Ph. _____ E-mail _____

Address: _____