

Yolo County Government

Serving our Residents

“Yolo County is a healthy, safe and vibrant community where all have the opportunity to thrive and the environment is protected for future generations.”

Vision Statement approved by Board of Supervisors

Presentation to
The League of Women Voters
Woodland, California

By Gerardo Pinedo
County Administrator

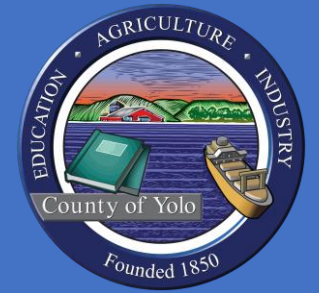
February 8, 2023



Roadmap for Today's Discussion

- Overview of county government structure
- Snapshot Yolo County Specifics
- CAO's Commitment & Priority Areas
- Challenges and Opportunities for our Great County
- Questions & Dialogue





What is the County's Governance Structure & Role?

Governed by The Board of Supervisors:

- Legislative
- Executive*
- Quasi-judicial
- Appoint & Supervise CAO & County Counsel
- Directly Selects and Appoints 5/11 dept heads
- Delegates to CAO appointment of 6 dept heads
- Delegates to CAO support and supervision of all appointed depts heads; and administrative support of countywide elected officials.

Generally and Broadly:

- Health & Human Services
- HHS + core municipal services in unincorporated areas
- May vary widely based on contracts with cities/others
- Shared Governance of other systems by appointment
- General Law vs Charter / Hybrid
- Uniquely situated among California's 58 Counties
- Justice

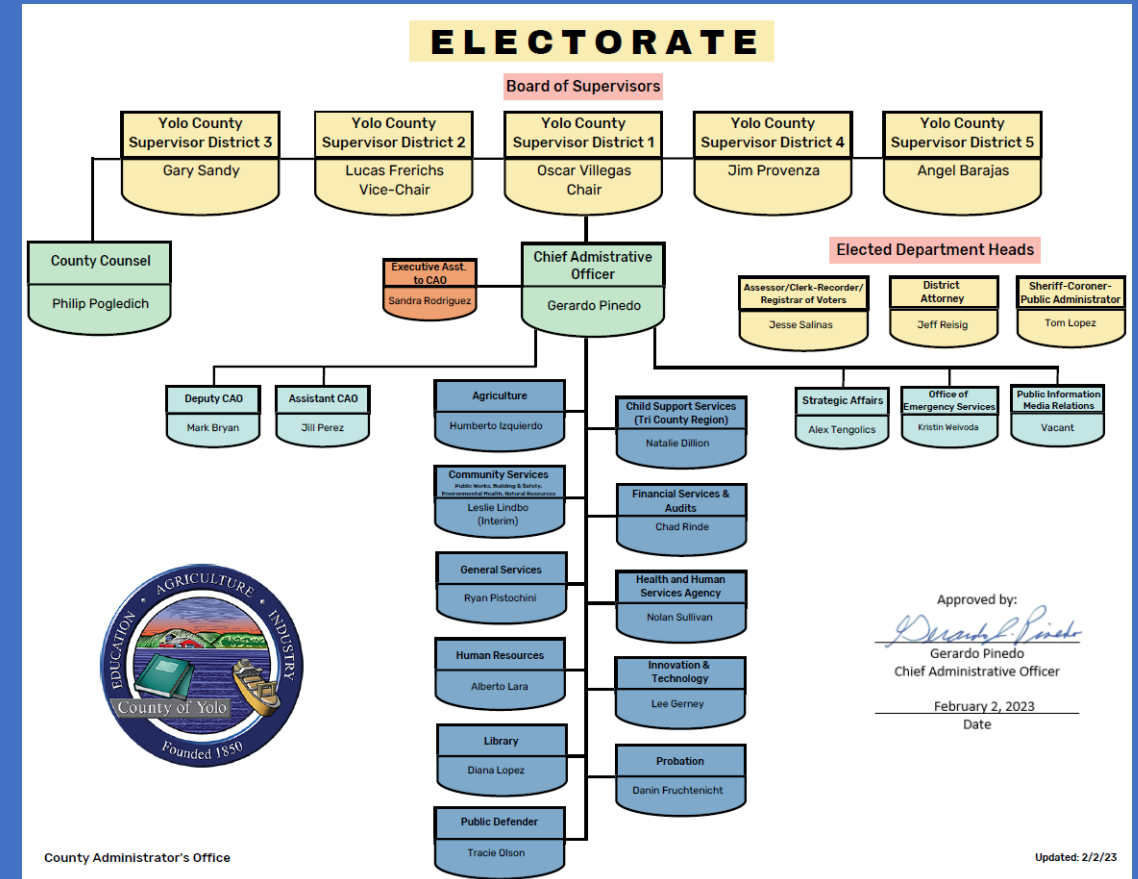


*evolving and varies in degree among counties

County of Yolo Specifics



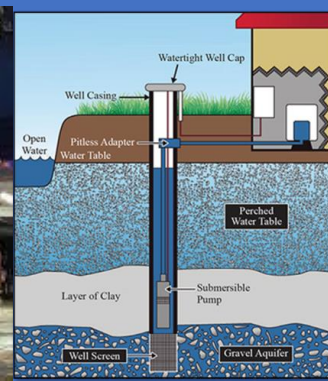
- Population of 216,403 residents (87% reside within incorporated cities)
- 5 Elected Supervisors each representing approx. 43,281 residents
- 3 Countywide Elected Officials (Sheriff, DA, Assessor/CR/Elections)
- 11 Appointed Department Heads (includes 1 Agency Head)
- Workforce of 1,814
- Budget FY 22/23 \$667,609,455 (General Purpose Revenue \$92,904,788)
- 4 incorporated cities: Davis, West Sacramento, Winters, Woodland
- 10 unincorporated communities
- Collaboration and partnership with Yocha Dehe Wintun Nation & UC Davis
- 14 Independent Fire Districts
- Special Districts and county related agencies, include: Yolo Transportation District; Yolo County Flood Control and Water Conservation District; Yolo Resource Conservation District; Yolo Habitat Conservancy; Yolo First 5; Yolo Local Area Formation Commission.
- General Law (hybrid)
- Strong commitment to preserving agriculture and open space: 78% of all acreage is designated for agricultural purpose
- Inclusive, Collaborative, Deliberative, Moderately paced, approach toward both Land Use and Governance in General

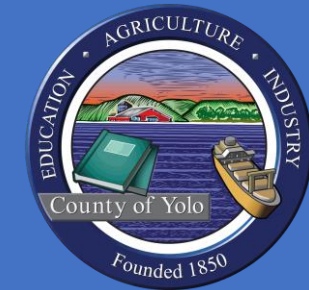




CAO Commitments & Priorities

- Implement the vision of the elected Board of Supervisors
- Collaborate with countywide elected officials
- Uphold longstanding local values
 - Agriculture-based economy
 - Education as a focal point
 - Economic Development compatible with smart growth principles
 - Preservation of Agricultural land and open space
 - Efficient, cost-effective, high quality government services
- Continued partnerships with our 4 cities, Yocha Dehe Wintun Nation, *all* educational institutions,
- Strengthening emergency services and response
- Partnering with water agencies to strengthen water infrastructure
- Investment in youth and senior populations, e.g. resolving food insecurity, improving health and adult daycare access, expanding childcare, improving our parks
- Solutions for the unhoused/homeless population
- Expand investment in mental health resources
- Expand library collections & community centers





CAO Commitments & Priorities Cont'd

- Increasing state and federal partnerships to fix our roads and bridges
- Regional approach for greater strength in numbers
- Economies-of-scale to leverage resources with cities and counties
- Implementation of BOS vision for Diversity, Equity, Inclusion
- Partnerships with Ag Community, Chambers of Commerce, and Community-based Organizations
- Encourage civic involvement through awareness, openness, and complete transparency
- Strategic investment in workforce for excellent customer service
- Support Sustainability and Climate Action

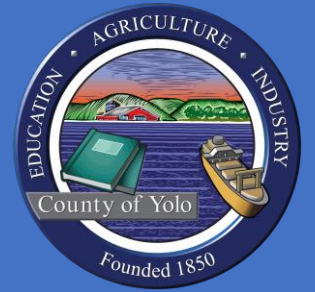




Challenges and Opportunities

- Challenges
 - Limited revenues
 - Tight Employment Market
 - Aging infrastructure
 - Balancing services between urban and rural
- Opportunities
 - Shared services with our cities
 - We have very engaged elected leaders
 - Economic development
 - Leveraging \$ to advance transformational projects
 - Continued partnership with state and federal officials





Thank you!

Gerardo Pinedo, CAO
County of Yolo
625 Court Street, Rm. 202
Woodland, CA 95695
gerardo.pinedo@yolocounty.org
(530) 666-8150

Attn: Sandra Rodriguez, Exec. Asst.
sandra.rodriguez@yolocounty.org