

Phone: 559-226-VOTE

info@lwvfresno.org

Web site:
my.lwv.org/California/fresno

Fresno

VOTER



Monday, September 9, 5 p.m.
Regular Board Meeting
League Office

Tuesday, September 17
CenCal Women's Conference
See our booth

Monday, October 7, 5 p.m.
Regular Board Meeting
Speaker: Linda
Gleason 6 p.m.
See announcement

Friday, October 25, 7 p.m.
"Big Tell"
Suffrage in the Valley
Tower Theatre
Free

**MEMBERS AND GUESTS
WELCOME**

TO ALL

**LEAGUE
MEETINGS**



*We Hear You... so
We've Got a New Plan!*

*In response to member requests, beginning next month we are
going to begin a different monthly
format that includes*

Board meetings 5 p.m.



Guest

Speakers 6 p.m.

No-Host Dinner Options



First meeting: Monday, October 7

Speaker: Linda Gleason, Founding Director, The Children's Movement
and Director, Fresno Cradle to Career

Place: Yosemite Falls Café
4020 North Cedar, at Dakota

No reservation needed: Just come and bring as many guests as you like

President's Message



I have been following the selection of a new police chief for the City of Fresno. Last spring community meetings were held to gather residents' ideas on the qualities they hoped to see in the new chief. Additionally, an online survey was available for residents to give input to the selection. Aside from a very few articles in the local media, there hasn't been much to follow.

I wonder about this idea of community input. Was a list of suggestions written up following the community's participation? Was that list compared with applicants' resumes? Did the search firm that was hired to fill the position receive the community's list? How did that firm, coming to its task after the community meetings, understand what Fresnans wanted? Perhaps the community comments were so diverse that no simple list could be made. I don't know.



From my perspective, the ideas expressed by the community went into a black hole, never to be heard from again. The recruitment firm searched for candidates, using the City's official job description, until sometime in June. GV Wire recently reported there are five candidates for the job, and that a panel of eighteen community members and City

employees interviewed the candidates to provide additional input. Did that local interview panel know what citizens suggested?

Mayor Brand and City Manager Wilma Quan will ultimately choose the new police chief, but what are they looking for? What was important to citizens who spoke out or completed surveys? Will we ever know if we got anything we asked for?

I believe that community input is critically important to decisions our elected officials make. But simply holding "input sessions" does not lead to inclusive decision making. Do the candidates for the position reflect the direction the community gave to the search? This is what I expect to learn when the new police chief is hired and introduced. Otherwise, our City is simply giving "lip service" to community input.

Marianne

The Voter is a monthly publication of the League of Women Voters of Fresno

Mailing address: 1345 Bulldog Lane Fresno, CA 93710

Volume 78, No.8 Editor: Francine M. Farber

MEMBER NEWS

Please edit your roster



It's always a good time for a gift to the League. LWVF is a 501 (c) (3) non-profit organization so your gift is tax deductible and gratefully accepted.

Checks should be sent to

LWVF

1345 Bulldog Lane, Fresno 93710

Fresno, CA 93710



The Behavioral Health Board is in need of additional members who are interested in improving services for those with mental health and substance use disorders. You are invited to attend the next meeting on September 18 and to consider joining the Board. You will find applications on the web site of the Fresno County Board of Supervisors. Need more information? evansalca@comcast.net

Voter Services

by Liz Shields



The *Get Out The Vote* group will focus on voter registration as Brandi Orth, County Clerk, has requested that as many new and updated registrations as possible be sent to the Elections Office by December 1. This will give the staff sufficient time to update the data bases and be prepared to send a ballot to every registered voter early in February in time for the Presidential Primary Election on March 3, 2020.

The first voter registration drive will be at Fresno State and Fresno City College on Constitution Day, September 17. In the morning we will register voters at the outreach by the Institute for Media and Public Trust and in the afternoon will be at the Fresno County Civic Learning Partnership, also on campus.

On September 24 National Voter Registration Day, we will be back at Fresno State and also at Reedley College and Clovis Community College. We plan to collect contact information from the registrants to remind them to vote in the Primary and also in the General Election in November.

A draft copy of the proposed Election Administrative Plan may be obtained from the Election Office web site, <https://www.co.fresno.ca.us/home/showdocument?id=35634>

The plan includes voter education and outreach plans, a detailed description of the new voting process and attachments including voter center layouts and potential vote center locations. The latter have been modified several times since the first draft based on comments from participants in public meetings over the past three month.

After approval of the EAP by the Secretary of State the Elections Office plans to hold "Train the Trainer" workshops for organizations that will be helping to spread information about the new voting process as well as distributing leaflets and using media campaigns and phone access to educate all voters. Expect to get a phone call or email asking you to volunteer for some of the voter registration events in September and October.

elizabeth44@yahoo.com

Behavioral Health

by Carolyn Evans



Preston Prince, Executive Director of the Fresno Housing Authority, presented an update to the Behavioral Health Board. The goal of the Housing Authority is to provide safe and affordable housing to the residents of Fresno County.

The Housing Authority assists 18,000 families with housing; of those served one-third are seniors and/or disabled; most of these families have an income under \$11,000 annually. For every one family served, four are unserved. While Fresno County needs an additional 40,000 housing units to meet the needs of its residents, only 3,000 have been completed within the last 10 years. Lack of funding causes these serious delays in the construction of affordable housing in Fresno, and throughout the country.

The Housing Authority and the Department of Behavioral Health partner to provide permanent supportive housing for clients with behavioral health disorders, who are homeless or at-risk of homelessness. Thus far only 260 clients are served by the Housing Authority. The three Renaissance projects, completed in 2012, house 210 individuals who are provided with supportive services; others receive housing vouchers, such as Shelter+Care.

Moving forward, the Housing Authority and the Department are partnering to build more housing with No Place Like Home funds. With a commitment to placements throughout the city, three sites have been selected, and soon construction will begin at Broadway and Divisadero, Belmont and Cedar, and Barstow and Blackstone. NPLH provides further grant opportunities that will be pursued.

After declining, the number of homeless individuals in Fresno County is on the rise, making the need for affordable housing more critical. The ultimate goal is to assist individuals with appropriate services *before* they become homeless. Until that happens, the Housing Authority, other builders, and agencies must continue to work, with our support, to meet the needs in our community.

evansalca@comcast.net

Next Meeting: September 18, 2:30 p.m.

DBH Wellness Center, 1925 East Dakota, Fresno

OUR PRIORITIES FOR 2019-2020

Reports from committees you can join

CLIMATE CHANGE

Our climate committee is continuing our work to educate ourselves about local, state and federal efforts. One of our goals is to offer an evening program in conjunction with other local organizations this spring, to help us all be able to vote knowledgeably with respect to our representatives approach to climate change. Lenore Yousef will represent our committee by attending a League of Women Voters Climate Change Forum in Sacramento on September 14.



Thanks to committee member Terri Figgs, you can keep up with what we are watching and reading by checking out her regular posts on the League of Women Voters of Fresno facebook page.

Next Meeting: September 11, 4:30—6 p.m.

4860 North Teilman, Fresno, 824-1083

**Co-Chairs: Andrea Farber De Zubiria/Connie Young
afarberdezub@gmail.com/cyoungrn@sbcglobal.net**

EARLY CARE AND EDUCATION

Our previous work to prepare a position on charter schools for consideration by the State League is moving forward. Despite the lack of a vote on our specific proposed position at the State Convention, the State League leadership nonetheless stated its intent to develop a position. A committee to do that is now being assembled.



Our committee is reviewing the Blueprint on Early Childhood Education prepared by the local Cradle to Career Partnership which was discussed at the State of the Children's breakfast last month.

Next Meeting: September 3, 4 p.m.

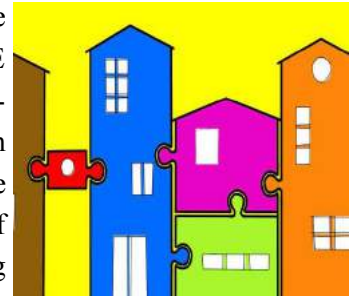
752 East Buckingham, Fresno, 226-2720

Chair Kay Bertken, kayb@csufresno.edu

AFFORDABLE HOUSING

Fresno ranks 59th out of 59 for economic and racial disparity in the Urban Institute's 2018 research on economic mobility in California's largest cities. Our regional economy is not strong enough to create the volume and opportunities needed to break the cycle of economic distress.

The 10-year plan in the DRIVE Initiative is designed to address this and other issues the Fresno area faces. DRIVE stands for Developing the Region's Inclusive and Vibrant Economy. This comprehensive plan will identify a portfolio of initiatives aimed at increasing economic mobility, addressing



racial disparities, and supporting a sustainable environment. This initiative was launched in July 2019 and will be unveiled at the Economic Summit in November. The DRIVE Initiative is sponsored by the Central Valley Community Foundation with support from the James Irvine Foundation. A steering committee involving over 75 organizations and 200 community leaders has been organized to guide the effort.

The Affordable Housing Committee is planning to have representatives attend the Summit, a workshop held on Nov. 7 and 8. "The Summit's bipartisan network of business, environmental and civic organizations is unique in championing solutions that meet the triple bottom line – simultaneously growing the economy, improving environmental quality and increasing opportunity for all."

Some of the speakers include Gov. Newsom, State Treasurer John Chiang, UC President Janet Napolitano, CSU Chancellor Timothy White, CA Community Colleges Chancellor Eloy Ortiz Oakley and many others.

Next Meeting to be announced

Chair: Nyla Zender, nylajzcomcast.net, 825-3564

Climate Change

by Andrea Farber de Zubiria



The nationwide conversation about climate change is heating up. Some of the Democratic candidates for president are making action on climate change one of the key issues of their campaign. Even most conservative groups and politicians are no longer denying that climate change is real and dangerous. Most now acknowledge it is caused by the buildup of greenhouse gases from the use of fossil fuels. How to effectively reduce the emissions going into our atmosphere without negatively affecting our economy seems to be the primary point of debate across the aisle at this time.

One of our committee's goals is to offer an evening program in conjunction with other local organizations this spring, to help us all be able to vote knowledgeably with respect to our representatives approach to climate change. Lenore Yousef will represent our committee by attending an LWVC Climate Change

Forum in Sacramento on September 14.

This summer, the US Conference of Mayors, an organization comprising 1,407 mayors from cities with populations of 300,000 or more, passed a series of environmental resolutions at their annual meeting. One of the resolutions "strongly urges the United States Congress to pass legislation that imposes a price on carbon emissions sufficient enough to reduce carbon emissions in

line with ambitions detailed in the Paris Agreement". Carbon pricing is a way to correct the market by charging polluters the true cost of doing business. By pricing carbon emissions, companies are given financial incentive to innovate ways to limit the amount of greenhouse gas emissions they produce. In consideration of all the health risks associated with climate and air pollution in our area, the local Fresno Madera Medical Society just passed a resolution supporting a fee for carbon emissions.



There are some new carbon pricing bills in Congress. Florida Republican Francis Rooney and Illinois Democrat Dan Lipinski recently introduced the Stemming Warming and Augmenting Pay Act and the Raise Wages, Cut Carbon Act to reduce carbon emissions. The bills would use the revenue from a carbon fee to reduce payroll taxes, help low-income households with energy costs and fund low-carbon energy research and development.

Senator Coons also plans to reintroduce the Energy Innovation and Carbon Dividend Act (HR763) as a bipartisan bill this Congress. This bill currently has 59 cosponsors in the House (58 Dem, 1 Republican), which is the most cosponsors that a carbon pricing bill has ever had.

afarberdezub@gmail.com

Water News

by Diane Merrill



LWVF has been attending meetings regarding local implementation of the Sustainable Groundwater Management Act since 2015. The Act requires a detailed Groundwater Management Plan to be developed for our local groundwater subbasin. This is a complex local planning effort of great importance to the future of our area.

We are focusing our efforts on the Kings Subbasin that covers the most populated areas of the eastern and central valley in Fresno County, and more specifically the North Kings Groundwater Sustainability Agency that includes the cities of Fresno, Clovis, Kerman and surrounding unincorporated areas. The North Kings is one of seven agencies in the Kings Subbasin that are developing individual plans that will be rolled into one "coordinated" plan to be submitted to the State by January 31, 2020.

The North Kings agency released its DRAFT plan on August 16. The 60-day written comment period extends until October 18. This draft document is over 800 pages long. LWVF will do its best to become informed about the contents of the plan and submit a letter with our comments.

Here are some takeaways from the groundwater planning process. The plan is the starting point, not the end point, in a 20 year process to achieve

(continued on page 6)

Education

by Kay Bertken

News around Fresno Unified has been focused on the trustee from the Bullard area, Major Terry Slatik. His confrontation of a student back in February, newly released information about his threatening behavior toward a Bullard coach and an Army recruiter, and most recently his intervention in a cheerleading practice at Bullard where he confronted the girls and threatened to discipline them and their program, have occupied a special Board meeting this summer plus a censure resolution at the first regularly scheduled meeting of this school year.

Censure and recall effort

The other Trustees concluded in their censure, among other things, that Trustee Slatik had acted beyond his prescribed role as a trustee in these incidents. Community members, most poignantly the Bullard cheerleaders and their parents, were out in large numbers and very vocal at both meetings. Many of the community speakers urged Trustee Slatik to resign his position. He has publicly refused to do that. A recall effort is being mounted.

First, some background on the cheerleader episode. Prior to Trustee Slatik's intervention, the cheerleaders were disappointed that a young woman who had appeared in blackface on social media was still on the cheerleading squad and had not been specifically disciplined by the school. Trustee Slat-



ic was disturbed by the information that the cheerleaders were talking about this. He came into their summer practice and told them if they did not stop he would see to it that they would be barred from summer cheer camp. and even end the team.

Costs of investigations

The District continues to investigate this incident. Investigating the previous incidents involving the trustee has already cost the district more than \$100,000.

Details of recall procedure

In order to mount a recall effort, a notice of intent to recall petition signed by 10 of trustee area 7's residents must be filed with the County Clerk. That petition must include a statement of the reasons for the recall effort. The clerk must deliver a copy of that petition to the subject of the recall and publish a notice in the newspaper.

The subject of the recall then has seven days to file a statement of defense. Recall organizers have 120 days to gather Bullard area voter signatures. In the case of the Bullard trustee, 20% of the 36,795 registered voters in his trustee area must sign; that is 7,359—a few more than the votes he received in his election to the post (7,323 out of the 21,404 votes cast in that race).

Within 30 days, the Clerk must certify the sufficiency of the petition and the validity of the signatures and present that certification to the relevant governing body—in this case the school district. Within 14 days, the governing body must call for an election which must be held between 88 and 125 days

from the time the governing board called for an election.

Election required

If there is an election already scheduled during that time, the recall will be part of that election. If not, there will be a special election. A majority vote is required for the official to be recalled. Typically, names of a candidate or candidates interested in filling the position of the official being recalled will also appear on the ballot. The candidate receiving the most votes will be elected to fill the remainder of the official's term if the recall is successful. Even if the petition gatherers and the County Clerk were especially efficient, the election timing of three to four months from the announcement of an election is fixed. At minimum, Trustee Slatik will remain in office till 2020.

kayb@fresnostate.edu

WATER NEWS

(continued from page 5)

sustainability. There will be increased well monitoring and data gathering over time to fill in gaps in understanding of groundwater levels and movement. The Kings River provides about 92 percent of the surface water supplies in the Kings Subbasin, although many people assume most of our local surface water comes from the San Joaquin River due to its proximity to the Fresno/Clovis metropolitan area. More information and a link to the draft plan is available at the North Kings Groundwater Sustainability Agency website.

MOTORS
SOLD • REPAIRED • REWOUND

PH (559) 650-1153
FAX (559) 650-1186



ELECTRICAL WIRING "Since 1913"
No. 246015

253 FULTON ST.
P.O. BOX 446
FRESNO, CA 93709

North of Herndon &
East of Fresno

530 E. Herndon Ave., Ste. 104
Fresno, CA 93720-2990

Frederick J. Kruger, D.P.M.
Diplomate, American Board of Podiatric Surgery
Diseases, Injuries and Surgery of the Foot

(559) 447-9040
(559) 447-9042 Fax

By Appointment

Be a Voter sponsor—\$100 per year—226-8683



This space sponsored by
Joan Lipton

Merci



NELSON

PHYSICAL THERAPY

Larry Nielson, P.T., O.C.S.

2747 W. Bullard, #105, Fresno, Ca 93711

Phone: 559.261.1425 Fax: 559.261.4573

web: NielsonPT.com

HEBERGER & COMPANY

AN ACCOUNTANCY CORPORATION

John D. "J.D." Heberger, CPA

5090 North Fruit Ave., Suite 102 (559)227-9772

Fresno, CA 93711-3062 www.hebergercpa.com

E-mail: jd@hebergercpa.com

HELPING TO PRESERVE

FRESNO'S PICTORIAL HISTORY



Howard K. Watkins

Fresno's Photo Laureate

www.watkinsphotoarchive.com

Donations to Central Valley Regional Foundation

NOTE: HKW Photo Archive Fund

5260 North Palm, Ste. 122, Fresno, CA 93704

Contact: 1785 W. Dovewood Lane, Fresno, CA 93710

355-7040 * howardkwatkins@gmail.com



Investment Services Retirement Planning Income Strategies

**Capital Financial &
Insurance Services, Inc.**

Robert H. Gunning

Financial Advisor

CA Insurance Lic # 0E61490

1318 East Shaw Avenue, Suite 200 • Fresno, CA 93710
Cell (559) 999-0773 • (559) **222-7441** • (800) 726-2732
Fax (559) 221-6519 • rgunning@ifgrr.com

CCLS
**Central California
Legal Services**

PATIENCE MILROD

Executive Director

2115 Kern Street, Suite 200

Fresno, CA 93721

O: 559.570.1214 * C: 559.790.6020

PMILROD@CENTRALCALLEGAL.ORG



League of Women Voters Fresno, Inc.
1345 Bulldog Lane,
Fresno, CA 93710

RETURN SERVICE REQUESTED

Non-Profit Organization
US Postage Paid
Fresno 93706
Permit # 896

BOARD OF DIRECTORS

President	Marianne Kast
Executive Vice President	Nyla Zender
Vice President, Voter Services	Elizabeth Shields
Director, Voter Services	Sue Goldman
Secretary	Marie Slater
Treasurer	Terri Figgs
VP Natural Resources	Vacancy
Director, Water	Diane Merrill
Director, Education	Kay Bertken
Director, Program Planning	Pat Campbell
Director, Student Unit	Lisa Bryant
Director, Membership	Dolores O'Neal
Voter Editor	Francine Farber
<hr/>	
Web Editor	Cathy Caples
Webmaster	Jacque Canfield

Empowering Voters, Defending Democracy

JOIN THE LEAGUE OF WOMEN VOTERS!

Men and Women age 16 and above Making Democracy Work

MISSION: The League of Women Voters is a nonpartisan political organization that encourages the informed and active participation of interested individuals and influences public policy through voter education and advocacy on issues. The League does not support or oppose any candidate or political party.

DIVERSITY POLICY: There shall be no barriers to participation in any activity of the LWVF on the basis of race, creed, national origin, gender, sexual orientation, disability, or socio-economic level.

What do you get when you join the League? All for one fee, you become a member of the Fresno, California and National Leagues and receive their newsletters. You may participate in League studies of issues; receive leadership training; hone your public speaking skills; become knowledgeable about local and state issues; learn more about government, natural resources and social policies as your time and interests dictate. You will also meet some interesting and friendly women and men who represent diverse backgrounds but find common ground in keeping abreast of current issues.

Yearly Dues Individual - \$70 ~ Family - \$100 (2 members, same address) ~ Student - Subsidized

Please send your check payable to the League of Women Voters, Fresno, with registration form (below), to: LWVF, 1345 Bulldog Lane, Fresno, CA 93710.

.....
Name _____ Ph. _____ E-mail _____

Address: _____