



Voters Guide

MUNICIPAL PRIMARY

Tuesday, May 20, 2025 • 7am-8pm

A NONPARTISAN PUBLICATION PREPARED BY
THE LEAGUE OF WOMEN VOTERS OF THE LEWISBURG AREA
CONTAINING CANDIDATES LISTED ON THE BALLOTS OF UNION COUNTY VOTERS

You may take this publication into the voting booth with you.

THE MUNICIPAL PRIMARY

Get voting information
at vote.pa.gov
Register to vote by
May 5th!

In Pennsylvania, a primary election is held each spring, allowing voters who are registered as Democratic or Republican to select their party's candidate for the election in the fall. Because Pennsylvania has a closed primary, voters only receive and cast a ballot for candidates from the major party in which they are registered. In the primary, independent and third-party voters do not receive any party's ballot and may vote only on ballot questions or special elections, if applicable. There are no ballot questions or special elections on Union County ballots for this primary.

Read the most
up-to-date candidate
responses online at
Vote411.org

This *Voters Guide* lists candidates by office. All those whose names appear on the official ballot for each office are listed together by party, with the candidates for the party of the governor appearing first. Within each party group, candidates appear in the order in which they will appear on the official ballot (unless stated otherwise in this *Voters Guide*).

*This publication contains important information for voters in all the municipalities of Union County.
It is provided free of charge by members of the League of Women Voters of the Lewisburg Area.*

TABLE OF CONTENTS

OFFICES ON THE BALLOT

PENNSYLVANIA APPELLATE COURTS

Judge of the Superior Court	3
Judge of the Commonwealth Court	4

UNION COUNTY OFFICES

Sheriff	6
Prothonotary & Clerk of Courts	6
Coroner	7
Magisterial District Judge: 17-3-01	7

TOWNSHIPS AND BOROUGHS

Buffalo Township	9
East Buffalo Township	9
Gregg Township	10
Hartleton Borough	11
Hartley Township	11
Kelly Township	11
Lewis Township	12
Lewisburg Borough	12
Limestone Township	13
Mifflinburg Borough	14
New Berlin Borough	14
Union Township	16
West Buffalo Township	16
White Deer Township	16

SCHOOL DISTRICTS

Lewisburg School Directors	17
Mifflinburg School Directors	18
Milton School Director, Region 3	18
Warrior Run School Directors, Region 1 ..	19

OTHER VOTER INFORMATION

VOTE411.ORG	2	UNION COUNTY VOTING RESULTS	7	ENGAGING YOUNG PEOPLE IN OUR DEMOCRACY ...	12
HOW WE GET OUR CANDIDATE INFORMATION	2	MAIL-IN AND ABSENTEE VOTING	7	FIRST-TIME VOTERS AT A PRECINCT	16
CONTESTED RACES	3	DESCRIPTIONS OF TOWNSHIP AND	8	CHECK YOUR VOTER REGISTRATION STATUS	16
STATE-WIDE JUDICIAL RACES	3	BOROUGH OFFICES		SCHOOL DIRECTORS	17
PENNSYLVANIA'S UNIFIED JUDICIAL SYSTEM	4	THANK YOU!	9	WRITE-IN VOTING	18
VOTING INFORMATION	5	ELECTION SECURITY	10	BECOME A POLL WORKER	19
UPCOMING JUDICIAL RETENTION ELECTIONS	6	JOIN US AT LWVLA	11	UNION COUNTY POLLING PLACES	20



The LEAGUE OF WOMEN VOTERS OF THE LEWISBURG AREA (LWVLA) publishes this *Voters Guide* as a public educational service. **Nothing in the Guide should be construed as an endorsement of any candidate by the LEAGUE OF WOMEN VOTERS.**

Editor: Sheri Stayton

Designer: Dawn Maneval

Voter Services Chair: Linda Harris

LWVLA President: Kandy Duncan

*Thanks to: Liz Clement, Carole Madle, Wayne Baker,
and*

the Union County Elections and Voter Registration Office

THE LEAGUE OF WOMEN VOTERS

The LEAGUE OF WOMEN VOTERS is a nonprofit organization of women and men whose purpose is to promote political responsibility through informed and active participation of citizens in government. The League is nonpartisan: it does not support or oppose any candidate or party. It does, however, study and take positions on public issues and encourages its members to participate as individuals in the party of their choice.

Contributions to support this activity are greatly appreciated and inquiries are welcome. Tax-deductible contributions can be made out to LWVLA Education Fund and sent to PO Box 206, Lewisburg, PA 17837. You may go to our LEAGUE OF WOMEN VOTERS OF THE LEWISBURG AREA website at LWVLewisburgArea.org or email us at lvlewisburgarea@gmail.com.

For more information about the League, voting, or government in Pennsylvania, please contact the LEAGUE OF WOMEN VOTERS OF PENNSYLVANIA at (717) 234-1576, info@palwv.org, or 922 N 3rd Street, 1st Floor, Harrisburg, PA 17102; website at www.palwv.org. Additional candidate and voter information can be found at Vote411.org.



Find more information about the candidates at:

Vote411.org

Information is posted by each candidate and is unedited by the LEAGUE OF WOMEN VOTERS. This Voters Guide contains information from candidates who responded by April 3, 2025. Candidates may have posted additional information on Vote411.org closer to the election.

LWVLA thanks the Union and Northumberland County GIS Offices, which were instrumental in helping us bring VOTE411 to Union County voters.

HOW WE GET OUR CANDIDATE INFORMATION

Candidates were invited to enter their responses on the **VOTE411** website in their own words. Vote411.org is provided by the national League of Women Voters Education Fund. We thank the League of Women Voters of Pennsylvania (LWVPA) for providing information on the state-wide judicial candidates.

The League of Women Voters of the Lewisburg Area (LWVLA) used candidate responses submitted to Vote411.org by April 3, 2025, to create this *Voters Guide*. We also include information specific to Union County voters, such as polling places and local League information. LWVLA does NOT edit candidate responses except to maintain standard formatting. Candidates may have updated, edited, or added to their information on Vote411.org since the April 3rd deadline.

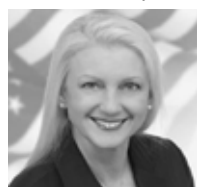
Note: If someone running for office in your area did not respond, you can help hold candidates accountable for providing voters with information. Contact any candidates who have not answered the questions and indicate your concern about their missing answers. Voters deserve to hear from those seeking election. Candidates can still complete their information so that it will appear on Vote411.org.

Answer to question 3: The analysis remains the same for every case. I would first read all documents provided to the court. Then I would research any legal issues that are presented. Next, I would determine if any distinguishable facts about this case would set it apart from any previous ruling made by a PA Appellate Court or The PA Supreme Court. I would also research to determine if there was any change in law since previous rulings addressed a similar legal issue. If there are no distinguishable facts or change in law, then legal precedent would be given great deference. If there was a change in law or the facts of the case are distinguishable, then a full legal analysis pertaining to the legal issue must be explored.

Website: judgeneuman.com

**Republican
MARIA BATTISTA**

Clarion County



Education:

2 undergraduate degrees: Elementary Education, Speech Communication & Theatre, Clarion University, B.S.;

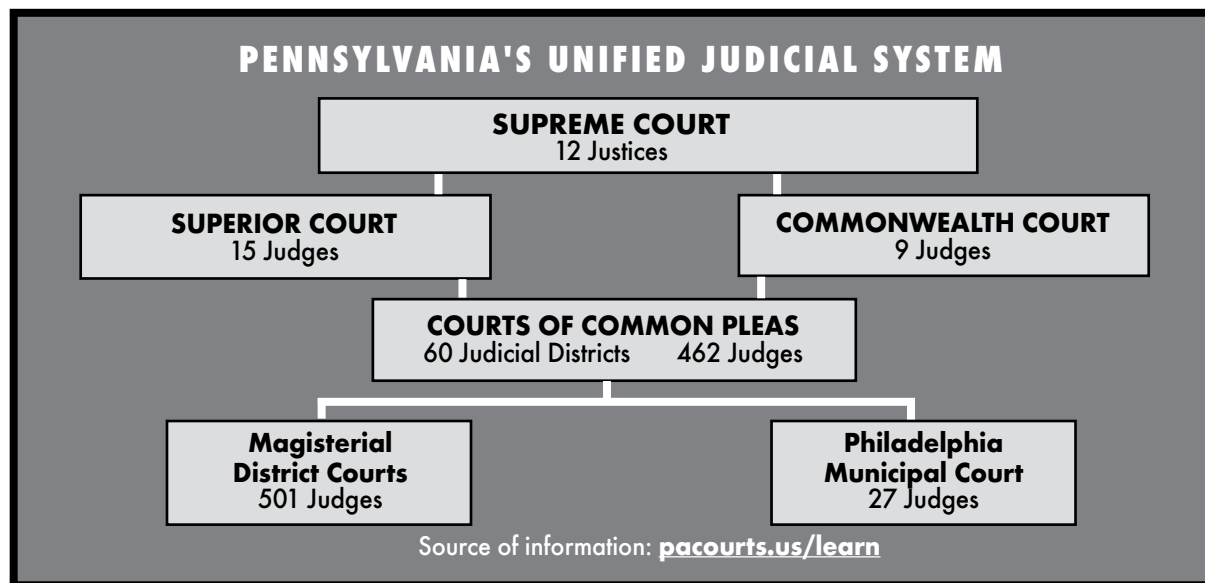
Westminster College, M.Ed.; Ohio Northern University, J.D.; University of Pittsburgh, Ed.D.

Occupation: Executive/Attorney

Qualifications: 15+ years experience in Civil, Criminal and Administrative Law; Former Assistant District Attorney; Former Attorney with the Governor Corbett Administration; Served as an Administrative Hearing Officer where I presided over hundreds of hearings and issued hundreds of administrative decisions.

Answer to question 1: In 2008, after studying the courts in more detail, I put on two legal symposiums about the courts. One program discussed the role of courts as protectors of children as a result of the Luzerne cash for kids scandal. I have seen as a practicing attorney, educator and mother how important our judicial system is and what happens when there is a breakdown of that system. When I served as a hearing examiner, which has similar functions as a judge, I issued hundreds of decisions. The decisions I wrote impacted the lives of others. I believe it is a calling and higher duty to serve as a judge. I would be honored to serve as a judge of the Superior Court to ensure our laws and constitution are upheld as written and to provide justice for all.

Answer to question 2: The Superior Court is one of two intermediate appellate courts in PA. The Superior Court is responsible for appeals in criminal and most civil cases from the Courts of Common Pleas. This court is also responsible for appeals involving children and families. When a matter is appealed to the Superior Court, it is the role of the judges assigned to the case to review



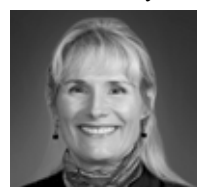
the record from the lower court along with the issue or issues on appeal. Each case has opposing positions/parties. Each case should be fairly and impartially evaluated by the judges based on the specific facts, law and if applicable, the constitution. It is not the role of the court or any judge to legislate from the bench.

Answer to question 3: The evaluation of a case does not change even if it could affect long-standing precedent. The role of the judge is to do what is right in every case. The review of case law related to the issue or issues before the court must be analyzed thoroughly in each case along with any constitutional issues raised. While it is rare that landmark cases are overturned, it is possible with a particular set of facts before the court.

Website: battistaforjudge.com

**Republican
ANN MARIE WHEATCRAFT**

Chester County



Education: University of NH School of Law 1990-1993 JD; Pennsylvania State University 1983-1988 BS Psychology and Minor in Business

Occupation: Judge, Court of Common Pleas

Qualifications: Currently President Judge in Chester County. Initially elected 2011. 2000-2011 I served as a prosecutor handling every type of criminal case. I have presided over civil, family, criminal, and treatment courts.

Answer to question 1: For 25 years I have served Chester County; first as a prosecutor and for the last 14 years on the Court of Common Pleas. I have presided over criminal, civil, and family proceedings and, since 2018, I have supervised our treatment courts, where we reduce recidivism and restore families. My daily courtroom experience as a litigator and as a trial judge make me an ideal candidate for the appellate work of Superior Court. I have been teaching criminal court practice to

newly elected PA trial judges since 2016. My many years in family court and in civil court ensure that I have the appropriate experience in all areas of practice under Superior Court's purview. I wish to employ my expertise and experience in service to all PA citizens.

Answer to question 2: I have been employing a fair and impartial process in handling cases in my courtroom since taking the bench in 2012. I will continue to treat all with respect and dignity, considering evidence presented, arguments of parties, and the applicable law in deciding cases. On Superior Court, three-judge panels collaborate on cases, determining the appropriate law and applying it to the facts at issue. As the President Judge in my county, I collaborate with county officials and all department heads to ensure our courts are efficient and fair for citizens. Having been an advocate and a litigator for 12 years prior to taking the bench, I understand the role of the parties and am respectful of each party fulfilling their role in our justice system.

Answer to question 3: In deciding cases, the same process applies as noted above. Judges must not legislate from the bench but rather apply the laws and Constitution as written, without personal or political bias. I participated in the judicial evaluation process of the Pennsylvania Bar Association and after they conducted a thorough investigation and panel interview, the Association awarded me their highest rating. "Due to her broad experience as a practicing attorney, proven record of judicial leadership, high ethical standards and dedication to the legal profession, the commission is confident that the candidate would serve with distinction as a Superior Court judge and highly recommends her candidacy." www.Pabar.org, 2025 Sup. Court Judicial Eval. Committee.

Website: judgewheatcraftforpa.com

JUDGE OF THE COMMONWEALTH COURT

Description of Office: The Commonwealth Court is one of Pennsylvania's two statewide intermediate appellate courts. This court, established in 1968, is unlike any other state court in the nation. Its jurisdiction generally is limited to legal matters involving state and local government and regulatory agencies. Litigation typically focuses on subjects such as banking, insurance, utility regulation, and laws affecting taxation, land use, elections, labor practices, and workers' compensation. The Commonwealth Court also acts as a court of original jurisdiction, or a trial court, when lawsuits are filed by or against the Commonwealth. The Commonwealth Court is made up of nine judges. The president judge is elected to a five-year term by his/her colleagues. Generally, appeals are heard by panels of three judges sitting in Philadelphia, Harrisburg, or Pittsburgh.

Term: 10 years

Salary: \$247,188

Vote for ONE.

For the questions asked of candidates for Judge of the Commonwealth Court, see the "STATE-WIDE JUDICIAL RACES" box on page 3.

**Democratic
STELLA TSAI**

Philadelphia County



Education: B.A. - Pennsylvania State University J.D. - University of Pennsylvania

Occupation: Judge, Court of Common

Pleas

Qualifications: My 35 plus years of experience in law and the judiciary have equipped me with the skills and insights necessary to address the complex social, economic, and governmental issues facing our Commonwealth.

Answer to question 1: It has been my great honor to serve as judge of the Court of Common Pleas for the last eight years. I decided to run for the vacant seat on the Commonwealth Court of Pennsylvania because the judges on this Court weigh in on many of the important issues of our day that will affect citizens across the Commonwealth of Pennsylvania, such as public education, the environment, voting rights, workers' rights, and the right to free and fair elections. The Commonwealth Court is often the last resort for these litigants because the Supreme Court only hears a select number of cases. I understand the responsibilities which come with serving as a judge and have an established record which demonstrates my commitment to ethics, integrity, and fairness.

Answer to question 2: My job requires me to act impartially and to treat all parties with respect. I want all parties to feel that they are on a level playing field. I do my best to put the parties at ease and allow them to have a free and fair opportunity to present their case, including language access, and that parties receive what they recognize to be due process under the law.

Answer to question 3: If I were to consider a case that might affect long-standing precedent, I would apply the guidelines articulated by the Pennsylvania Supreme Court, which recognized that a decision to overrule a past decision requires special consideration and depends on a number of factors, including: the age and lineage of the decision, the quality of reasoning, the workability of the rule it established, and its consistency with other related decisions reliance on the decision.” See *Allegheny Reproductive Health Center v. PA Department of Human Services*, 309 A.3d 808 (Pa. 2024). Stare decisis is “afforded ‘special force in the area of statutory interpretation’ In contest to constitutional law” and “does not demand unseeing allegiance to things. Id.

Website: stellaforjudge.com

Republican
MATT WOLFORD
Erie County



Education:

Undergraduate degree:
Penn State; Juris
Doctorate degree:
Temple University
School of Law

Occupation: Attorney

Qualifications: 38 years of relevant experience in government and private sectors, including Commonwealth Court hearings and appeals; ranked “Highly Recommended” by the PA Bar Association; see website for additional details

Answer to question 1: I seek to serve on the Commonwealth Court specifically due to its critical importance to the fundamental rights of “We the People.” The Commonwealth Court – which acts mostly as an appellate court but can also act as a trial court for certain matters – is limited to cases involving State and local governments. As a result, Commonwealth Court judges are often gatekeepers in striking an appropriate balance between the necessity for government on the one hand versus unreasonable government interference with personal freedoms and private property rights on the other. I believe the Court needs common sense, constitutional conservative judges who are willing to push back on government overregulation and overreach and not legislate from the Bench.

Answer to question 2: For this response, I assume that the Commonwealth Court is acting in its capacity as an appellate court. In my view, appellate courts should be “hot” courts, meaning that prior to oral argument, judges should become versed in the legal arguments presented. This requires reading the opening, response, and reply briefs; and, to the extent indicated by the arguments, reviewing portions of the reproduced record. Timely preparation allows judges to take advantage of the opportunity to ask unbiased, intelligent questions at oral argument. During oral argument, judges should treat all counsel with dignity and respect; and should be mindful of the extraordinary expenditure of time, effort, and resources required to appear before the Court.

Answer to question 3: This question suggests the existence of a legal issue in a case that implicates revisiting well-settled precedent. Such cases are necessarily rare (and should be) under the principle of stare decisis; otherwise, society cannot rely on the certainty and security the law is intended to provide. Nevertheless, there are occasions when precedent is legally infirm or ongoing injustice must be remedied. *Plessy v. Ferguson* comes to mind as clearly bad precedent on legal and moral grounds. In deciding such cases, in addition to the two above-referenced criteria, fairness to the parties and the likely practical consequences of a change in the law should be carefully considered. The facts of the case are also obviously relevant.

Website: mattwolfordforjudge.com

(continued on next page)

VOTING INFORMATION

REGISTRATION

May 5, 2025 is the last day to REGISTER to vote in the May Primary or to change your address or party registration. Register online at vote.pa.gov or contact the Union County Elections Office for an application.

Pennsylvania recently became the 24th state to implement automatic voter registration. Since September 19, 2023, residents obtaining new or renewed driver’s licenses and ID cards have responded to questions to complete or update their voter registration, unless they opt out. Previously, the Department of Motor Vehicles asked residents if they wanted to fill out a separate form to register to vote or update their registration.

MAIL-IN AND ABSENTEE VOTING

ALL registered voters in PA have the option of voting in person or by mail. For more information, see the **“MAIL-IN and ABSENTEE VOTING” box on page 7.**

MAKE SURE YOU KNOW WHERE TO VOTE

At the website vote.pa.gov, you can check your registration status and polling place, register to vote, or apply for a mail-in or absentee ballot. If you moved or can’t remember where you vote, contact the County Elections Office to make sure you go to the right polling place. This information is also on your Voter Registration card. If you registered to vote while applying for or renewing a PA driver’s license and you have received a Voter Registration Card, you are eligible to vote in this election. For a list of Union County polling places, see **page 20** of this *Voters Guide*.

ACCESSIBILITY AND ASSISTANCE IN VOTING

Any voter having questions regarding the accessibility of a polling place should contact the County Elections Office. Any voter who has a disability that requires assistance in voting or using a voting machine may complete a declaration at the polling place and receive assistance.

ELECTION DAY PROBLEMS

Poll workers are there to help you, show you how to work the machines, and assist with any other questions. If your right to vote is challenged at the polls on Election Day and the problem cannot be resolved at the polling place, the Judge of Election at the polling place will telephone the County Elections Office. The problem could be resolved by phone if your name appears on the county records. If it does not, you must be given the opportunity to cast a provisional ballot. If it is determined that you are eligible to vote, your vote will be counted. You can check the status of your provisional ballot by calling the County Elections Office.

COUNTY ELECTIONS OFFICE: CONTACT INFORMATION

ADDRESS: Union County Elections Office
Union County Government Center
155 North 15th Street, Lewisburg, PA 17837

Phone: 570-524-8681

Website: unioncountypa.org (under **Departments**, choose **Elections & Voter Registration**)

Republican
JOSH PRINCE

Berks County



Education: Juris Doctorate

Occupation: Attorney

Qualifications: I've spent my career defending our civil rights in the state and

federal courts. Beyond having successfully litigated numerous appeals in the PA courts, including before the PA Supreme Court, in just the past 6 years, I've successfully litigated more than 10 cases before the Commonwealth Court.

Answer to question 1: The Commonwealth Court hears cases that touch many areas of daily life—education, family law, civil rights, healthcare, election integrity, and government accountability. It plays a vital role in ensuring Pennsylvanians are treated fairly and that public institutions follow the law. I've spent my career standing up for constitutional rights, applying the law as written, and offering restorative legal solutions that bring dignity to people and healing to communities. I want to use my experience and expertise in the service of others. My wife Jessica and I are expecting our first child, and I want our daughter to grow up in a Commonwealth

UPCOMING JUDICIAL RETENTION ELECTIONS

In November, voters will decide whether to **retain** five additional justices/judges in the state-wide courts (three on the Supreme Court, the highest court in the Commonwealth; one on the Superior Court, and one on the Commonwealth Court.) According to PACourts*:

The merit retention provision of Pennsylvania's constitution allows all but magisterial district judges to be retained with a simple "yes" or "no" vote without ballot reference to political affiliation. This provision was designed to remove judges from the pressures of the political arena once they begin their first term of office.

* Source: pacourts.us/learn/how-judges-are-elected

The following judges will run for judicial retention on the November ballot:

- Supreme Court Justice Christine Donahue
- Supreme Court Justice Kevin Dougherty
- Supreme Court Justice David Wecht
- Superior Court Judge Alice Dubow
- Commonwealth Court Judge Michael Wojcik

where justice for all isn't just a promise—but something every Pennsylvanian can count on.

Answer to question 2: Fairness starts with listening. I would approach each case with an open mind, carefully reviewing the facts, applicable law, and arguments from all parties. I believe in applying the Constitution and laws as written—not based on personal opinion, favors, or political pressure. The courtroom must be an approachable place

where everyone knows justice will be served impartially. Behind every legal matter are real people and communities, and I take that responsibility seriously.

Answer to question 3: Precedent brings stability and consistency to the law, and it should not be overturned lightly. I would examine whether the precedent is legally sound, aligns with constitutional principles, and serves justice in practical, modern terms.

If a decision causes confusion, inequity, or departs from the law's original intent, the Court has a duty to correct course carefully and transparently. Any decision to uphold or revisit precedent must promote fairness, accountability, and the long-term strength of our legal system. This is how we build a foundation of trust in Pennsylvania's courts.
Website: princeforjustice.com

UNION COUNTY OFFICES

SHERIFF

Description of office: As the chief peace officer of the county, the Sheriff is responsible for carrying out the orders of the Union/Snyder Court of Common Pleas and maintaining order. Duties include serving processes, writs, warrants, summons, and other judicial documents; making arrests; delivering and executing court orders; executing sheriff's sales; transporting prisoners; impaneling jurors; issuing firearms permits; maintaining security in the courtroom; and carrying out other orders of the county court

Term: 4 years
Salary: \$82,937
Vote for ONE.

The candidate for Sheriff was asked:
What do you see as the most important part of the Sheriff's job, and how would you address it?

Democratic
No candidate filed

Republican **SCOTT HAHN**

Union Township



Education: Lewisburg Area High School Graduate, Business Management Degree Pennsylvania College of Technology, North American Police Work

Association, Penn State University / Pennsylvania Commission on Crime and Delinquency Sheriff Education and Training (ACT 2)

Occupation: Chief Deputy Union County Sheriff Office

Qualifications: Chief Deputy Union Co Sheriff office 15yrs, DUI Coordinator, Union & Snyder Co., US Marshal Fugitive Task Force Deputation, McCann School of Business Instructor, Union Co. K9 Handler, Attorney General Drug Task Force member, Sergeant Union Co Sheriff's office, and over 25 job-related Tech. Certs.

Answer to question: Modern-day Sheriffs have a wide range of duties, from educating the public with drug prevention and active shooter training to apprehending fugitives and making criminal arrests. Choosing the law enforcement activities that give the community the greatest return while staying

within our budget, manpower, and resource limits is challenging and the most important part of the job. My goal is to equalize the time spent on Courthouse Security and Inmate Transportation with anti-crime activities within the community through an open-door policy for citizens to voice concerns and opinions on crime prevention. I have found through my experience by keeping good communications with the citizens we are able to prioritize the needs of the county.

PROTHONOTARY & CLERK OF COURTS

Description of office: The Prothonotary administers the records of civil proceedings of the Court of Common Pleas including, but not limited to, divorces, protection from abuse orders, judgments and liens, evictions, foreclosures, medical malpractice, and any other civil filings. This office also keeps naturalization records and processes passport applications. The Clerk of Courts administers the records of criminal proceedings of the Court of Common Pleas (including adult and juvenile records), collects fines and costs, and accepts bail bonds. In addition to the duties of those two offices, the Prothonotary/Clerk of Courts also maintains the office of Clerk of the Orphans' Court, handling adoptions, guardianships, estates, and marriage licenses.

Term: 4 years
Salary: \$92,685
Vote for ONE.

The candidate for Prothonotary and Clerk of Courts was asked:

What do you see as the most important part of the job of Prothonotary and Clerk of Courts, and how would you address it?

Democratic
No candidate filed

Republican **DIANE O. MILLER**

East Buffalo Township

Education: Lansdowne Aldan HS Delaware County Community College Bloomsburg University

Occupation: Prothonotary/Clerk of Courts

Qualifications: 11 years experience working in the Prothonotary/Clerk of Courts Office

Answer to question: One of the most important jobs that our office performs is keeping our records up to date. Documents are filed, recorded and scanned into the appropriate systems. Our office recently updated our civil system, replacing an outdated system.

CORONER

Description of office: The Coroner is the officer responsible for investigating sudden, suspicious, or violent deaths in the county. S/he is required to issue a probable cause of death certificate if death occurs without medical attendance, and when necessary s/ he orders autopsies and subpoenas witnesses for inquests. The Coroner oversees the county morgue and must authorize all cremations within the county.

Term: 4 years
Salary: \$51,259
Vote for ONE.

Democratic
No candidate filed

Republican
DOMINICK ADAMO
Lewisburg Borough



Education: Pennsylvania State University and Pittsburgh Institute of Mortuary Science
Occupation: Coroner/ Licensed Funeral

Director
Qualifications: Attending many continuing education classes and being involved numerous in death investigations each year over my 13 years with the coroner’s office.

MAGISTERIAL DISTRICT JUDGE: 17-3-01

One of two magisterial courts in Union County, District 17-3-01 includes Lewisburg Borough and the Townships of East Buffalo, Kelly, and Union.

Description of office: The minor courts, also called the “special courts,” are the first level of Pennsylvania’s Unified Judicial System. There are 501 magisterial district judges based in community courts throughout the Commonwealth, with two judges in Union County. The Magisterial District Judge decides small claims, landlord-tenant disputes, traffic cases, minor criminal matters and civil suits, and conducts preliminary hearings in serious criminal cases. Magisterial District Judges must reside in their districts for a year preceding their election to office. Those who are not members of the PA Bar Association

must complete a course of training and instruction in the duties of their office and pass an examination prior to assuming office. Once in office, all judges must take continuing legal education programs.

Term: 6 years
Salary: \$113,713
Vote for ONE.

The candidate for Magisterial District Judge was asked:

What personal qualities do you have that make you particularly suited to be a judge?

Democratic/Republican
JEFF ROWE

Lewisburg Borough



Education: Lewisburg Area High School; B.A., University of Delaware; J.D., University of Maryland School of Law

Occupation:

Magisterial District Judge & Attorney
Qualifications: Magisterial District Judge, 2020-present; former assistant public defender; former assistant district attorney; past private practice included criminal defense, civil litigation, school law, social security claims, estate planning, Title IX investigations; former Mental Health Review Officer

Answer to question: I love to teach the law, which doesn’t sound like it would be relevant until you consider that most people who have cases in front of me represent themselves and have little to no experience with the courts. They won’t feel like they’re getting a fair chance to be heard if they are stymied by substantive law or procedural rules, so I explain, as simply as I can, the basics to them before we begin with testimony, so they know what to expect and what issues to highlight. Over the last five years, I’ve found that this not only puts people at ease, but reduces the likelihood of antagonistic confrontation. To do this effectively, I need to exhibit patience, empathy, and honesty, all while ensuring order and civility amongst the parties.

Website: linkedin.com/in/jeff-rowe-6767a45a/

MAIL-IN AND ABSENTEE VOTING

• **MAIL-IN BALLOT:** ALL registered voters in PA now have the option of voting by mail-in ballot. You may now apply for a mail-in ballot without an excuse using an online application at vote.pa.gov, by mailing in a paper application, or by submitting a paper application in person at the County Elections Office.

• **ABSENTEE BALLOT:** Absentee ballots are still available to those who satisfy certain criteria (illness, disability, or absence from the municipality on Election Day).

• **BALLOT APPLICATION DEADLINES:** Completed civilian applications for mail-in or absentee ballots must be **RECEIVED** by the County Elections Office by 5:00 p.m. on the Tuesday before the Primary (May 13, 2025 - postmark does not matter). If an emergency arises (unexpected illness or business trip) after the Tuesday application deadline and before Election Day, you may obtain an emergency application from the County Elections Office.

• **RETURNING YOUR BALLOT:** Return your mail-in or absentee ballot by mail – you must provide postage. You can also drop off **YOUR OWN** mail-in ballot at the reception desk of the Union County Government Center. Voters with a disability can designate someone else to return their ballot using this form:

pa.gov/content/dam/copapwp-pagov/en/vote/resources/documents-and-forms/Authorize-Designated-Agent-for-Mail-in-or-Absentee-Ballot.pdf

• **BALLOT RETURN DEADLINES:** Completed civilian mail-in or absentee ballots must be **RECEIVED** by the County Elections Office by 8:00 p.m. on the Day of the Primary (Tuesday, May 20, 2025 - postmark does not matter).

• **NOTE:** Once the county receives your voted mail-in ballot, you are **NOT** allowed to go to the polling place to change your vote on Election Day. **If you do not return** your voted mail-in ballot and you want to vote in person, you have two options:

1. Bring your **ballot and the envelope** with the voter’s declaration to your polling place and turn it in so you can vote on your county’s voting system.
2. If you don’t have your ballot, you can vote by provisional ballot at your polling place. Note your provisional ballot number so you can track it.

• **TRACKING YOUR BALLOT:** If you requested an application or ballot online, you can track the status of your application or ballot at vote.pa.gov/MailBallotStatus

• **IMPORTANT:** Direct all questions about your mail-in or absentee ballot to the Union County Elections office.

UNION COUNTY VOTING RESULTS

Unofficial Union County vote totals will be posted at unioncountypa.org as soon as they are available.

NOTE: Only Union County votes are reported here. For PA Appellate Courts, and for Milton and Warrior Run school directors, winners will be determined by combining Union County votes with votes in the entire State or voting district for each race.

COUNTY ELECTIONS OFFICE: CONTACT INFORMATION

ADDRESS: Union County Elections Office
Union County Government Center
155 North 15th Street, Lewisburg, PA 17837

Phone: 570-524-8681

Website: unioncountypa.org (under **Departments**, choose **Elections & Voter Registration**)

DESCRIPTIONS OF TOWNSHIP AND BOROUGH OFFICES

BOROUGH COUNCIL

Description of office: There are 6 to 8 council members in each borough with half elected every 2 years. Borough Council members meet once monthly and are responsible for enacting, revising, repealing, and amending ordinances and resolutions that govern and are beneficial to the borough, but are not inconsistent with the laws of the Commonwealth. The Council appoints other borough officers such as secretary, treasurer, solicitor, manager, etc., but no council member can also be a borough employee. The Borough Council has the power to make, authorize, and ratify expenditures for lawful purposes from available funds or from funds borrowed within legal limits. Additionally, each member serves on at least one committee such as planning, police, public works, or finance.

Term: 4 years

MAYOR

Description of office: The Mayor is the chief law enforcement officer of the borough, the executive administrator of the police department (if there is one), and the elected official who takes charge during the time of an emergency. S/he attends and takes part in the monthly Borough Council meetings and votes in cases of a tie (unless it involves the hiring or firing of police personnel). The Mayor has the power to sign or veto ordinances and regulations as well as the responsibility for their enforcement.

Term: 4 years

TOWNSHIP SUPERVISOR

Description of office: There are 3 supervisors for each of our local townships, one being elected every 2 years. The Board of Supervisors is the legislative body of the township in setting policy, enacting and enforcing ordinances and resolutions, adopting budgets, and levying taxes. The Supervisors are responsible for planning and zoning, road maintenance, providing for fire and police protection, hiring employees, and the administration of financial affairs. They are also involved with regional councils of government (COGs) and agencies. This includes Central Keystone COG, SEDA-COG, sewer enforcement, recreation, and other affairs affecting the health, safety, and welfare of township residents.

Term: 6 years

QUESTIONS asked of all CANDIDATES for BOROUGH COUNCIL, MAYOR, and TOWNSHIP SUPERVISOR:

- 1) Why are you seeking this office?
- 2) What are the most important services that your borough/township provides, and what should be improved?

AUDITOR

Description of office: There are 3 township auditors, one elected every 2 years. They meet several times after the first of the year to audit the accounts of the tax collector and all municipal officers, as well as all municipal accounts of any person, organization, or agency receiving or spending municipal funds.

Term: 6 years (4 and/or 2 year unexpired terms may also be on the ballot)

TAX COLLECTOR

Description of office: A Tax Collector's responsibilities include collecting real estate, school district, and other taxes for the county and the municipality that s/he serves. S/he does not collect the earned income tax.

Term: 4 years

JUDGE OF ELECTION

Description of office: A Judge of Election oversees the Election Board members and is responsible for the smooth operation of the polls in his/her voting precinct each election, making certain that all regulations regarding voting are followed before, during, and after voting takes place.

Term: 4 years

INSPECTOR OF ELECTION

Description of office: An Inspector of Election oversees procedures at polling places to make certain that all regulations regarding voting are followed before, during, and after voting takes place.

Term: 4 years

SALARIES: JUDGES and INSPECTORS OF ELECTION at each precinct are compensated for their time at rates set by the Board of Elections. Contact the Union County Elections Office for updated rates. All other salaries vary by borough or township and can be found with the candidate information in this Voters Guide, if available.

BUFFALO TOWNSHIP

For the descriptions of offices and the questions asked of candidates, see the "DESCRIPTIONS of TOWNSHIP and BOROUGH OFFICES" box on page 8.

SUPERVISOR

Salary: \$1,875 per year
Vote for ONE.

Democratic CHRISTOPHER STOWE



Education: Belmont University

Occupation: Grants officer for a charitable foundation

Qualifications: I have experience in

social services through my full-time work and I served on a bike and pedestrian safety advisory committee in the Nashville area

Answer to question 1: My goal in to improve public safety, particularly traffic safety. I have seen many areas with poorly marked intersections or areas with low visibility that would benefit from better illumination, reduced speed limits, or other forms of improved safety. This is particularly true on residential streets with high speed limits where there are large numbers of low speed vehicles such as bikes or buggies

Answer to question 2: Maintenance of transportation infrastructure is critical and there ways the built environment should be improved for safety, such as wider shoulders

Republican MARK WEHR

Education: Mifflinburg High School / Penn State University

Occupation: Retired / Previously self-employed dairy farmer and dairy equipment sales and service business owner for 22 years. Then employed by the Paul Mueller Company as a regional sales manager for 21 years.

Qualifications: Extensive contact and working relationships with people as customers, employees and co-workers. Currently serving on the Buffalo Township Planning Board and the Union County Planning Commission.

Answer to question 1: My goal is to separate township administration from township employment. I believe there is potential for conflicts of interest to arise when a township supervisor is an employee of the township. There isn't a framework of accountability with the current system of operation. Buffalo Township needs checks and balances to operate efficiently. Township operating capital has decreased and the residents of the township have just incurred a 42% tax increase.

Answer to question 2: Road maintenance is the primary concern of most residents. However, road maintenance must be accomplished with the best use of residents' tax dollars. Township spending must be brought under control or more tax increases are inevitable.

Republican PAUL HAINES



Education: Mifflinburg Area High School Class of 1979

Occupation: Buffalo Township Roadmaster

Qualifications: 12 years owner/operator

of Haines Excavating, 10 years combined service (part-time and full-time) Buffalo Township employee, Current Buffalo Township Supervisor

Answer to question 1: I strive to represent the constituents of Buffalo Township and address citizen's concerns. I also have a desire to continue improving Buffalo Township roads and infrastructure as well as continue with the overall progress we have made in the Township over the past 5 years.

Answer to question 2: Buffalo Township's most important services are maintaining the quality of our roads, resealing, paving, ditching and berm work along with winter maintenance. The township has been actively seeking grant money to assist with road upgrades and storm water management. Grant money will assist with lessening the taxpayer burden on road maintenance and upgrading the quality of our township roads.

AUDITORS

Salary: \$25 per meeting

6 Year Term; 4 Year Unexpired Term;
2 Year Unexpired Term

Vote for ONE for each term.

No candidate filed in either party

TAX COLLECTOR

Salary: 5% of township tax collected
Vote for ONE.

Democratic
No candidate filed

Thank you!

For financing our publications,
the LEAGUE OF WOMEN VOTERS OF THE LEWISBURG AREA
gratefully acknowledges the generous donations from
members, friends, and local businesses.

Without your financial support,
we could not offer free publications to the community.

Republican PAIGE CURRY

Education: Hopewell Area HS, Aliquippa Pa; L.C.C.C, Nanticoke Pa

Occupation: Tax Collector, Former Secretary/Treasurer

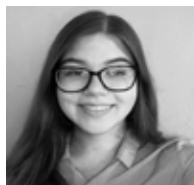
Qualifications: Buffalo Twp. Tax collector since the 2015 elections, banking and accounting background, township secretary/treasurer from 2018 to 2022, Former President and a member of the board of the Union County Association of Township Officials for the past 6 yrs. and a member of PSTCA.

JUDGE OF ELECTION

BUFFALO 1

Vote for ONE.

Democratic OCEAHANNA D. HAUPT



Education: Pennsylvania College of Technology

Occupation: Undergraduate/ Caretaker

Qualifications: I

have strong a strong knowledge of election laws and voter rights, excellent attention to detail and organizational skills, and a deep commitment to fairness and integrity.

Republican
No candidate filed

BUFFALO 2

Vote for ONE.

Democratic
No candidate filed

Republican ALEXANDRA PLETCHER

Education: BA Criminal Justice Missouri Baptist University

Occupation: Homemaker

Qualifications: Current Buffalo 2 Inspector of Election

INSPECTOR OF ELECTION

BUFFALO 1 & 2

Vote for ONE in each district.

No candidate filed in either party

MIFFLINBURG SCHOOL DIRECTORS

REGION 1

For candidates and their responses, see "MIFFLINBURG SCHOOL DIRECTORS" on page 18.

EAST BUFFALO TOWNSHIP

For the descriptions of offices and the questions asked of candidates, see the "DESCRIPTIONS of TOWNSHIP and BOROUGH OFFICES" box on page 8.

SUPERVISOR

Salary: \$2,500 per year
Vote for ONE.

Democratic JIM KNIGHT



Education: A.S. Engineering Science, Broome C.C.; B.S. Mechanical Engineering, Bucknell University

Occupation: Director of Energy & Utilities, Bucknell University (retired)

Qualifications: 43 years experience as engineer, project manager, and facilities director; 12 years on township planning commission, 6 years as township supervisor.

Answer to question 1: It has been a pleasure to serve as Township Supervisor for the past 6 years. We've improved services, added park space, and improved streets and roads while decreasing property taxes. We've secured millions of dollars in grant funding to complete important projects without burdening taxpayers. I want to continue moving the Township in a positive direction for the next 6 years.

(continued on next page)

Answer to question 2: Public safety is our #1 priority. We need to sustain the strong support for our police, fire, and EMS services. We've made progress improving pedestrian and bicycle safety, but have more to do especially along the Rt. 45 corridor. We will continue to develop the three community parks to make them more attractive and accessible for residents and visitors.

Website: [facebook.com/profile.php?id=100069824745085](https://www.facebook.com/profile.php?id=100069824745085)

Republican

No candidate filed

AUDITORS

Salary: \$18 per hour

6 Year Term

Vote for ONE.

Democratic

LANA SNYDER

Education: BS degree

Occupation: Retired Therapeutic Recreator

Qualifications: Not provided

Republican

No candidate filed

4 Year Unexpired Term;

2 Year Unexpired Term

No candidate filed in either party

TAX COLLECTOR

Salary: \$3.50 per bill collected

Vote for ONE.

Democratic

MAGGIE WAGGONER



Education: Master Library Science, State University of NY at Albany

Occupation: Public Library Director, retired

Qualifications: Public service oriented.

Twenty-five+ years managing budgets, personnel and programing for public libraries. Also was a small business owner, organizing educational tours for students.

Democratic

DANIEL GREENE

Education: Bachelor's Degree from IUP in Business Administration

Occupation: Self employed Tax Collector

Qualifications: Member Pennsylvania State Tax Collectors Association. Currently qualified and working as the EBT tax collector. Former Union County Deputy Tax Collector. Member of the Union County Affordable Housing Committee.

Republican

No candidate filed

ELECTION SECURITY

The PA Department of State addresses Election Security with:

- More Security in Voting
- More Robust Post-Election Audits
- Safe & Secure Voter Registration & Voting Systems

For more information, see the LWVLA "Integrity of the Ballot" pamphlet here: lwvlewisburgarea.org/integrity-ballot

For information from the PA Department of State, go to: pa.gov/agencies/vote/elections/election-security.html

JUDGE OF ELECTION

EAST BUFFALO 1

Vote for ONE.

No candidate filed in either party

EAST BUFFALO 2

Vote for ONE.

Democratic

ADRIENNE WONG



Education: Johns Hopkins School of Advanced International Studies, MA in Int'l Affairs & Econ.; College of William & Mary, BA in Econ.

Occupation: Labor & Human Rights/Sustainability Analyst

Qualifications: As a former human rights researcher, civil servant, and election volunteer, I deeply value democracy and our American right to vote. As JoE, I would be committed to ensuring that election operations run fairly and in a non-partisan manner. The act of voting should be a positive experience for all.

Republican

No candidate filed

EAST BUFFALO 3

Vote for ONE.

Democratic

JAMES E. MANEVAL



Education: BS and PhD in Engineering

Occupation: Retired

Qualifications: I will use my skills to maintain smooth, fair, and reliable voting

operations for all registered voters in the 3rd Precinct. Ensuring the integrity of the voting process is paramount to ensuring honest and reliable election outcomes.

Republican

SHERRY ROWE

Response not provided

EAST BUFFALO 4

Vote for ONE.

No candidate filed in either party

INSPECTOR OF ELECTION

Vote for ONE.

EAST BUFFALO 1

Vote for ONE.

No candidate filed in either party

EAST BUFFALO 2

Vote for ONE.

Democratic

SHARON L. SILBERMAN

Education: Master of Arts in Psychology

Occupation: Licensed Psychologist

Qualifications: Incumbent for 8 years

Republican

No candidate filed

EAST BUFFALO 3

Vote for ONE.

Democratic

JUSTIN RUMMEL



Education: Bachelor of the Arts, Political Science from Millersville University & Masters of Business Administration from Western Governors

University

Occupation: Vice-President for Enrollment at Susquehanna University

Qualifications: Current executive, former Audit Director, former Fellow for the PA General Assembly's Bipartisan Management Committee, and former Research Analyst for the PA House of Representatives Health and Human Services Committee

Republican

No candidate filed

EAST BUFFALO 4

Vote for ONE.

No candidate filed in either party

LEWISBURG SCHOOL DIRECTORS

For candidates and their responses, see "[LEWISBURG SCHOOL DIRECTORS](#)" on page 17.

GREGG TOWNSHIP

For the descriptions of offices and the questions asked of candidates, see the "[DESCRIPTIONS of TOWNSHIP and BOROUGH OFFICES](#)" box on page 8.

SUPERVISOR

Salary: \$1,875 per year

Vote for ONE.

Democratic

No candidate filed

Republican

MICHAEL A. KEISER

Response not provided

AUDITORS

Salary: \$10 per hour

6 Year Term; 4 Year Unexpired Term

Vote for ONE for each term.

No candidate filed in either party

TAX COLLECTOR

Salary: 5% of township tax collected

Vote for ONE.

No candidate filed in either party

JUDGE OF ELECTION

Vote for ONE.

No candidate filed in either party

INSPECTOR OF ELECTION

Vote for ONE.

No candidate filed in either party

WARRIOR RUN SCHOOL DIRECTORS

REGION 1

For candidates and their responses, see "[WARRIOR RUN SCHOOL DIRECTORS](#)" on page 19.

Join

us in making our communities fair, vibrant, and strong!

If you found this VOTERS GUIDE informative and helpful, please consider joining the LEAGUE OF WOMEN VOTERS OF THE LEWISBURG AREA. After more than 70 years of service to Union County, the League of Women Voters of the Lewisburg Area needs volunteers who can take leadership roles in our organization to continue our work locally.

All women and men who are 16 years of age or older are welcome to join. The LEAGUE OF WOMEN VOTERS OF THE LEWISBURG AREA serves all of Union County. We need your help in encouraging voters' informed participation in government and getting information about elections and candidates to all parts of Union County.

The LEAGUE OF WOMEN VOTERS is a trusted and nonpartisan organization; we do not endorse any candidates or political parties. We work to increase understanding of major policy issues, and to influence public policy through education and advocacy at the national, state, and local levels. In Union County, we hold monthly forums open to the public on topics relevant to our communities, publish the VOTERS GUIDE and FACTS FOR VOTERS, hold Candidates Nights, and more. **Join us!**



Email: lwwlewisburgarea@gmail.com
Website: LWVLewisburgArea.org
Facebook: facebook.com/LWVLA

HARTLETON BOROUGH

For the descriptions of offices and the questions asked of candidates, see the ["DESCRIPTIONS of TOWNSHIP and BOROUGH OFFICES"](#) box on page 8.

BOROUGH COUNCIL

Salary: \$180 per year
Vote for not more than FOUR.
No candidate filed in either party

MAYOR

Salary: \$180 per year
Vote for ONE.
No candidate filed in either party

AUDITORS

Salary: \$30 per day, 2-3 days
6 Year Term; 4 Year Unexpired Term;
2 Year Unexpired Term
Vote for ONE for each term.
No candidate filed in either party

TAX COLLECTOR

Salary: Information unavailable
Vote for ONE.
No candidate filed in either party

JUDGE OF ELECTION

Vote for ONE.
No candidate filed in either party

INSPECTOR OF ELECTION

Vote for ONE.
No candidate filed in either party

MIFFLINBURG SCHOOL DIRECTORS

REGION 3
For candidates and their responses, see ["MIFFLINBURG SCHOOL DIRECTORS"](#) box on page 18.

HARTLEY TOWNSHIP

For the descriptions of offices and the questions asked of candidates, see the ["DESCRIPTIONS of TOWNSHIP and BOROUGH OFFICES"](#) box on page 8.

SUPERVISOR

Salary: \$1,800 per year
Vote for ONE.
No candidate filed in either party

AUDITORS

Salary: \$10 per hour
6 Year Term; 4 Year Unexpired Term
Vote for ONE for each term.
No candidate filed in either party

TAX COLLECTOR

Salary: Information unavailable
Vote for ONE.
No candidate filed in either party

JUDGE OF ELECTION

Vote for ONE.
No candidate filed in either party

INSPECTOR OF ELECTION

Vote for ONE.
Democratic
No candidate filed

Republican PAM HACKENBURG

Education: Associate's degree in business
Occupation: Receptionist
Qualifications: None

MIFFLINBURG SCHOOL DIRECTORS

REGION 3
For candidates and their responses, see ["MIFFLINBURG SCHOOL DIRECTORS"](#) box on page 18.

KELLY TOWNSHIP

For the descriptions of offices and the questions asked of candidates, see the ["DESCRIPTIONS of TOWNSHIP and BOROUGH OFFICES"](#) box on page 8.

SUPERVISOR

Salary: \$2,500 per year
Vote for ONE.

Democratic
DENNIS MACADAM
Response not provided

Republican ERIC E. IMGRUND



Education: Mifflinburg HS graduate, 1987; Williamsport Area Community College graduate, 1989

Occupation: Self-employed Excavating Contractor
Qualifications: 55 year resident of Union County; 31 year business owner; long term Union County 4-H Program Development Committee member; 10+ year 4-H leader; Kelly Township Planning Commission officer; Union County West End Fair director; Mifflinburg Young Farmers member; PA Farm Bureau member

(continued on next page)

Kelly Twp., cont.

Answer to question 1: I look forward to continuing to serve the residents of Kelly Township for 6 more years.

Answer to question 2: I am committed to working together with fellow supervisors, residents and business owners to keep Kelly Township a great place to live, work and worship.

AUDITOR

Salary: \$10 per hour
Vote for ONE

No candidate filed in either party

TAX COLLECTOR

Salary: 5% of township tax collected
Vote for ONE.

Democratic

No candidate filed

Republican

CINDY L. BINGAMAN



Education: High School Graduate

Occupation: Business Owner

Qualifications: I have been tax collector for the previous 6 years.

JUDGE OF ELECTION

KELLY 1 & 2

Vote for ONE in each district.

No candidate filed in either party

INSPECTOR OF ELECTION

KELLY 1

Vote for ONE.

No candidate filed in either party

KELLY 2

Vote for ONE.

Democratic

ANNA P. WOLFE

Education: Graduated from high school.

Occupation: farmer

Qualifications: I have worked at the polls for 5 years.

Republican

No candidate filed

LEWISBURG SCHOOL DIRECTORS

For candidates and their responses, see [“LEWISBURG SCHOOL DIRECTORS” on page 17.](#)

ENGAGING YOUNG PEOPLE IN OUR DEMOCRACY

BACKGROUND: In 2016, the League of Women Voters of the Lewisburg Area (LWVLA) was the recipient of a generous grant from League members Rebecca and James Mauch for the purpose of identifying and implementing strategies for engaging young people in the civic life of our democracy.

MISSION: The mission of the LWVLA Mauch Millennial Project is to engage young people in the civic life of our democracy in the United States in general, and specifically in the LWVLA’s service area of Union County, PA. To that end, the LWVLA Mauch Millennial Project began developing and implementing a series of initiatives beginning in 2016.

MAUCH INITIATIVES: The initiatives include activities at local high schools and middle schools, various voter education events, community civic engagement opportunities for young adults, the Bucknell-Mauch Fellowship Program (co-sponsored with the Bucknell Political Science Department), a LWVLA-sponsored voting exhibit at the Lewisburg Children’s Museum, and online resources for voters.



TO LEARN MORE ABOUT THE **MAUCH MILLENNIAL PROJECT,**
VISIT THE LWVLA WEBSITE AT:
LWVLewisburgArea.org/Mauch-Millennial-Project

LEWIS TOWNSHIP

For the descriptions of offices and the questions asked of candidates, see the [“DESCRIPTIONS of TOWNSHIP and BOROUGH OFFICES”](#) box on page 8.

SUPERVISOR

Salary: \$1,200 per year
Vote for ONE.

No candidate filed in either party

AUDITORS

Salary: \$10 per hour
Vote for ONE.

6 Year Term, 4 Year Unexpired Term

Vote for ONE for each term.

No candidate filed in either party

TAX COLLECTOR

Salary: \$3.50 per bill collected
Vote for ONE.

No candidate filed in either party

JUDGE OF ELECTION

Vote for ONE.

Democratic

No candidate filed

Republican

RICHARD D. TROUTMAN

Response not provided

INSPECTOR OF ELECTION

Vote for ONE.

Democratic

No candidate filed

Republican

KAREN M. TROUTMAN

Response not provided

MIFFLINBURG SCHOOL DIRECTORS

REGION 3

For candidates and their responses, see [“MIFFLINBURG SCHOOL DIRECTORS”](#) box on page 18.

LEWISBURG BOROUGH

For the descriptions of offices and the questions asked of candidates, see the [“DESCRIPTIONS of TOWNSHIP and BOROUGH OFFICES”](#) box on page 8.

BOROUGH COUNCIL

Salary: \$1,200 per year
Vote for ONE.

WARD 1

Vote for ONE.

Democratic

BINA BILENKY TRAHAN

Response not provided

Republican

No candidate filed

WARD 2

Vote for ONE.

Democratic

ERIN KARAHUTA



Education: University of Pittsburgh: Psychology, BS, German, BA; Lehigh University: Psychology, PhD

Occupation: Research

Administration

Qualifications: 7 years’ experience applying and interpreting federal and state regulations; DIG Furniture Bank Development Committee; Lewisburg Neighborhood’s Green Team

Answer to question 1: I seek this office because I love living in Lewisburg Borough, and I want the borough to be a place where residents and businesses can flourish. I have experience developing and implementing policy within an organization of over 9,000 people, and I know the importance of listening to stakeholders and considering both the positive and negative impacts a policy can have on a community. As a councilperson, I would hear the concerns of borough residents and business owners, and I would implement policy to improve their day-to-day lives.

Answer to question 2: Lewisburg Borough has mitigated flood risk, and efforts are underway to increase the safety of pedestrians, cyclists, and drivers. This supports the well-being of residents and the economic health of the borough, and there is more work to be done. I would enhance the economic development of Lewisburg by supporting local entrepreneurs, collaborating

with community partners, and investing in local infrastructure. I would also invest in our borough's outdoor spaces, which would attract new visitors and invite current residents to engage with their community. As a member of Lewisburg Neighborhood's Green Team, I have seen the impact a few people can have on creating inclusive, sustainable outdoor spaces the entire community can enjoy.

Republican
No candidate filed

WARD 3
Vote for ONE.

Democratic
DAVID HEAYN



Education: Villanova Univ., BA, 2007, MA, 2009; The Graduate Center of the City Univ. of New York, MPhil, 2014, PhD in progress

Occupation:

Communications Director of Mental Health Campaign at Children First

Qualifications: 8 years of experience as a Lewisburg Borough Councilmember, including 1 year as Council President; Served on various non-profit boards, contributing to strategic planning and community outreach; Proven leadership with professional non-profit experience, focusing on advancing community needs.

Answer to question 1: I am seeking to serve to continue my commitment to making our community a stronger, more inclusive place for all. I have seen firsthand the impact that thoughtful, collaborative leadership can have on our local government. I am passionate about improving the quality of life in Lewisburg by focusing on transparency, fiscal responsibility, and building partnerships between local government, nonprofits, businesses, and residents. As an community-driven change, I want to help shape policies that foster economic development, support the arts, improve public services, and ensure that every voice in our community is heard and respected. I believe in a collaborative approach to positive change for the people of Lewisburg.

Answer to question 2: Our green spaces & rec areas enhance quality of life, offering leisure & health benefits. Improving accessibility, & enhancing parks will better serve all residents. Our infrastructure, including roads & water systems, needs proactive maintenance to prevent larger issues. Implementing a plan for repairs & accessibility improvements is essential. Our environmental work through recycling, waste management, and using green infrastructure to mitigate flooding & create a healthier environment. Economic growth is key; supporting small businesses & streamlining permits will strengthen our local economy. Affordable housing is a priority—addressing

zoning & developing mixed-use solutions will ensure housing for many who are excluded.

Republican
No candidate filed

WARD 4
Vote for ONE.

Democratic
PHILIP STAMM
Response not provided

Republican
RUDY MUMMEY
Response not provided

MAYOR

Salary: \$1,800 per year
Vote for ONE.

Democratic



KENDY ALVAREZ

Education: BA, Bucknell University

Occupation: Economic Development

Qualifications: Board Member, Pennsylvania

Municipal League & PA State Mayors Association. Appalachian Leadership Institute Fellow. Open Discourse Coalition Fellow.

Answer to question 1: I am running for re-election because I am committed to serving Lewisburg and ensuring it remains a vibrant, welcoming community. As Mayor, I bridge the needs of residents with local decision-making and advocate for our borough at regional, state, and federal levels. I've worked to strengthen government transparency, economic development, and sustainability while ensuring our community has access to key resources. There is still more to do, and I am eager to continue working collaboratively to address challenges, build on our successes, and shape a thriving future for Lewisburg.

Answer to question 2: Lewisburg provides essential services like public safety, infrastructure, and economic development, ensuring a high quality of life. To maintain and improve them, we must be more intentional about governance—strengthening our tax base, modernizing processes, and improving efficiency. A strategic, long-term vision is critical to sustaining services while adapting to new challenges. By aligning policies with sustainability, economic growth, and community engagement, we can build a resilient and inclusive future for Lewisburg.

Website: facebook.com/KendyAlvarezMayor

Republican
No candidate filed

TAX COLLECTOR

Salary: 2% of borough tax collected
Vote for ONE.

Democratic
No candidate filed

Republican
CONNIE MOORE

Education: BS Chemical Engineering University of Pittsburgh

Occupation: Tax Collector

Qualifications: Tax Collector for 20 years. PA qualified tax collector. Director PA State Tax Collector Association for over 10 years

JUDGE OF ELECTION

Vote for ONE.

WARD 1
Vote for ONE.

Democratic
MICHAEL S. BRODY



Education: Attended S.U.N.Y at Alfred

Occupation: retired

Qualifications: have lived in Lewisburg ward 1 for 40 years. I was also appointed to

Borough Council for 1 1/2 years

Republican
DAVENA LAVERTY

Response not provided

WARD 2
Vote for ONE.

Democratic
ANNE GRIFFIN

Education: BSN, MSN

Occupation: RN

Qualifications: Judge or Elections appointment since 2023

Republican
No candidate filed

WARD 3
Vote for ONE.

Democratic
DEBRA SULAI



Education: Houghton College, BA; Regent College (Canada), Master's; University of Chicago, PhD

Occupation: Director of Lewisburg

Neighborhoods

Qualifications: Previous Judge of Elections, Lewisburg Ward 3; Lewisburg Borough Council, Ward 3

Republican
No candidate filed

WARD 4
Vote for ONE.

No candidate filed in either party

INSPECTOR OF ELECTION

WARD 1, 2, 3, & 4

Vote for ONE in each ward.

No candidate filed in either party

LEWISBURG SCHOOL DIRECTORS

For candidates and their responses, see "LEWISBURG SCHOOL DIRECTORS" box on page 17.

LIMESTONE TOWNSHIP

For the descriptions of offices and the questions asked of candidates, see the "DESCRIPTIONS of TOWNSHIP and BOROUGH OFFICES" box on page 8.

SUPERVISOR

Salary: \$1,875 per year
Vote for ONE.

Democratic
No candidate filed

Republican
RICHARD J. HIMMELREICH



Education: SUN Tech

Occupation: Construction Superintendent

Qualifications: Manage large construction projects

mainly health care

Answer to question 1: To serve the public.

Answer to question 2: Road maintenance. We are doing the best we can with available budget

AUDITORS

Salary: \$18 per hour
Vote for ONE.

6 Year Term; 4 Year Unexpired Term; 2 Year Unexpired Term

Vote for ONE for each term.

No candidate filed in either party

TAX COLLECTOR

Salary: 3% of township tax collected
Vote for ONE.

Democratic
No candidate filed

Republican
CHRIS COXE

Education: BS Johnson & Wales University, Providence RI

Occupation: Limestone Township Tax Collector

Qualifications: Currently Limestone Township Tax Collector.

(continued on next page)

JUDGE OF ELECTION

Vote for ONE.

No candidate filed in either party

INSPECTOR OF ELECTION

Vote for ONE.

No candidate filed in either party

MIFFLINBURG SCHOOL DIRECTORS

REGION 1

For candidates and their responses, see [“MIFFLINBURG SCHOOL DIRECTORS” on page 18.](#)

MIFFLINBURG BOROUGH

For the descriptions of offices and the questions asked of candidates, see the [“DESCRIPTIONS of TOWNSHIP and BOROUGH OFFICES” box on page 8.](#)

BOROUGH COUNCIL

Salary: \$1,800 per year

MIFFLINBURG EAST

Vote for not more than TWO.

Democratic LINDA L. LEWIS



Education: Bachelor’s and Master’s in Architectural Engineering from Penn State; Associates in Allied Health Sciences from USAF

Occupation: Retired U.S. Air Force engineer

Qualifications: US Forces Veteran; Former Mifflinburg Borough Council Member

Answer to question 1: I have a desire to help in the ways that I can. After 21 years of active duty in the military, I still enjoy working for the people. I’m very happy that the council member position does not require wearing battle gear weighing half my body weight or dredging through knee-high ‘moon dust’ somewhere. I enjoy working on issues of today (engineers tend to have a ‘get-er done’ type attitude) as well as planning for the needs and visions of tomorrow (in the most practical, economical and timely way

possible). I look forward to continuing to use my skillset to serve the people of my community.

Answer to question 2: Mifflinburg is a nice town that provides water, sewer & electric to its residents. It has its own Police Dept & 2 Community Parks. It also offers intangibles like safety, opportunity & culture. As far as improvements needed—1st is the unsexy—the sewer pipes. The sewer pipes below the surface are like Swiss cheese, letting water infiltrate the system—which then in turn overwhelms the sewer plant. Yuck, right. This is the most unsexy, but necessary improvement needed. Now the sexy—the Community Parks. Here is where there is much opportunity to revive a community. How to transform the spaces to where people want to go? Should one be geared towards sports & the other family? Should there be a circular walk-path inside the park? a pool? a stage?

Republican

No candidate filed

MIFFLINBURG WEST

Vote for ONE.

Democratic

No candidate filed

Republican BEVERLY L. HACKENBERG



Education: Mifflinburg Area School District

Occupation: Self Employed

Qualifications: Over 20 years on Boro

Council

Answer to question 1: I’m seeking re-election, because I would like to see Mifflinburg continue to grow and continue to be a Great area to raise a Family.

Answer to question 2: I believe the services (water, sewer, electric, police protection, parks & streets etc...)that we provide to our residents, should be the best that we can give.

MAYOR

Salary: \$1,800 per year

Vote for ONE.

Democratic

No candidate filed

Republican DAVID COONEY



Education: B.Sc. Biology

Occupation: Photography Studio Owner

Qualifications: Sixteen years as mayor

with a focus on public safety.

Answer to question 1: I LOVE being mayor and I give this job 110%. BUT I would love to see more young people get involved by joining Borough Council. It’s time us the old-timers to pass the torch onto the next generation, so if you’re young and energetic please, Please, PLEASE consider running for office or volunteering for a borough committee. It’s time for the next generation to guide our town.

Answer to question 2: I place a priority on enhancing our sense of community and I’m pleased that several of our vacant downtown buildings have recently sold to owners who are interested in bringing more business to the downtown. Helping these new owners think outside the box and determine what businesses models work will create a thriving downtown.

TAX COLLECTOR

Salary: Borough does not collect property tax
Vote for ONE.

No candidate filed in either party

JUDGE OF ELECTION

MIFFLINBURG EAST & WEST

Vote for ONE in each ward.

No candidate filed in either party

INSPECTOR OF ELECTION

MIFFLINBURG EAST & WEST

Vote for ONE in each ward.

No candidate filed in either party

MIFFLINBURG SCHOOL DIRECTORS

REGION 2

For candidates and their responses, see [“MIFFLINBURG SCHOOL DIRECTORS” on page 18.](#)

NEW BERLIN BOROUGH

For the descriptions of offices and the questions asked of candidates, see the [“DESCRIPTIONS of TOWNSHIP and BOROUGH OFFICES” box on page 8.](#)

BOROUGH COUNCIL

Salary: \$300 per year

4 Year Term

Vote for not more than FOUR.

Democratic MICHAEL PALERMO

Education: BA Psychology, MS Exceptionalities

Occupation: Retired Licensing Inspector/ Investigator

Qualifications: Resident of New Berlin since 1979, Current Councilmember

Answer to question 1: Continue to serve residents of New Berlin and make a difference.

Answer to question 2: Opportunities to volunteer, participate in activities of New Berlin. The borough is a great community to raise your children. It would be nice to have more community folks take an active role in the various activities we have to offer.

Republican MEGHAN SHAMBACH



Education: BS/ Biology; BS/ Environmental Science; MS/Occupational Safetyand Health, Concentration: Environmental

Management

Occupation: Senior Environmental, Health and Safety Manager

Qualifications: 6 years on Borough Council

Answer to question 1: I am running for borough council because I believe in the fundamental role that local government plays in enhancing the quality of life for residents. This position offers a unique opportunity to directly impact critical decisions that affect our community. I am deeply committed to ensuring that our residents’ voices are heard and that their needs are effectively addressed through thoughtful policy and advocacy. I am particularly driven by the chance to create positive, tangible change as I have for the

FOLLOW LWVLA ON FACEBOOK

Stay up-to-date on the events sponsored by the LEAGUE OF WOMEN VOTERS OF THE LEWISBURG AREA.

Like and follow us at:

facebook.com/LWVLA

VOTERS GUIDE ON WEBSITE

An electronic version of this Voters Guide is available for downloading on the

LEAGUE OF WOMEN VOTERS OF THE LEWISBURG AREA website at:

LWVLewisburgArea.org/voters-guide

last 6 years. Above all, I view this role as an opportunity for meaningful public service. I am focused on the growth of our community, ensuring it remains a place where all residents feel valued, supported, and empowered.

Answer to question 2: New Berlin is a small, charming community with a unique blend of historical significance, natural beauty, recreational opportunities, and vibrant local businesses. There is a great opportunity to enhance our tourism and recreational offerings, while also supporting and promoting our local businesses. Additionally, fostering the growth of community events and gatherings would provide an avenue for strengthening ties between residents and local organizations. By leveraging the success of these events to support our local non-profits, businesses, and organizations, we can cultivate a stronger, more resilient community that thrives together.

**Republican
JULIANNE W. FINKBINER**

Education: Bachelor of Science in Business Administration Accounting

Occupation: Accountant Fiscal Manager

Qualifications: 20 years on council, finance background 30 years

Answer to question 1: I wish to continue my work to responsibly steward the tax payers money. I also believe that we must do right because it is the right thing to do. The principles of our constitution demand it. The tyranny of the minority is not a reason to change things in a free society.

Answer to question 2: Our borough provides a police force demanded by the majority of citizens. Over time this has been the most important service the people of New Berlin have requested be kept. Our borough also has a municipal authority that has been separate from but governed by the borough. The relationship between these two bodies has been fraught with reticence on the part of the authority and demands for transparency on the part of the borough council. This needs to change. I want to work toward a compliance with borough code of the municipal authority to insure that our projects that include municipal authority infrastructure move smoothly and without loss of taxpayers money. This includes fire hydrant safety, fees for services, budget approval, audits.

**Republican
DAVID FARMER**



Education: High School in New Jersey, College in Delaware and Oklahoma

Occupation: Mathematician

Qualifications: I have been attending Borough Council meetings for years, and for the past two years I have served on the Council, filling a vacancy when a Council member moved out of New Berlin.

Be Ready to VOTE in the Municipal Primary!

MAY 5, 2025

Last Day to Register OR
Change Party Affiliation

your
VOTE
matters

MAY 13, 2025

Last Day to Apply for a
Mail-In OR Absence Ballot

MAY 20, 2025

Municipal Primary
Election Day!

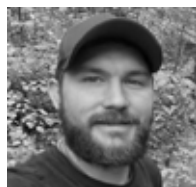
Answer to question 1: There is a communication problem in New Berlin. The Borough Council is not effective at letting people know what it is doing and what is happening in town. The Council is also not receptive to input from the community. I will work to address both issues.

Answer to question 2: Leaf and stick pickup are great services, as is street maintenance. New Berlin used to be more tidy and beautiful and I'd like to see more efforts to bring that back. I'd also like to find a way to address complaints about uneven enforcement of ordinances.

**2 Year Unexpired Term
Vote for ONE.**

Democratic
No candidate filed

**Republican
GREGORY G. OHLFS**



Education: Associate of the liberal Arts

Occupation: Electrician

Qualifications: Extensive Leadership experience in the

workforce. OSAH 30 Certified. Long term community involvement.

Answer to question 1: I am seeking office to serve the residents of New Berlin Borough. As a relatively New Resident to New Berlin Borough I feel I can bring a fresh and youthful perspective to the council. I intend to steward my position as a councilman with integrity, and wisdom. My hope is to work with the other members of the council to continue to make New Berlin Borough a safe, peaceful, and desirable place to call home.

Answer to question 2: Our Beloved fire Company is of great importance to the borough. Not only do they provide the life saving EMS/ Fire services that you would expect from a fire company they also provide

fun and community through the many events they hold through the year. Most notable is their fireman's Carnival that is held each year. As the current liaison between the council and fire company I am happy to support them as they continue to aid our borough and the surrounding area. As with anywhere there is always areas that need to be improved. As a council member I intend to do my part to and work with the other council members to make New Berlin a better place.

**Republican
DAVID FARMER**

To read David Farmer's answers, see his previous listing under New Berlin Borough Council 4 Year Term.

MAYOR

Salary: \$300 per year
Vote for ONE.

Democratic
No candidate filed

**Republican
SCOTT EUGENE BENFER**



Education: Student at God's Bible School & College (GBSC)

Occupation: Transportation Specialist, Pastor

Qualifications: My qualifications for the mayor of New Berlin come from the various leadership roles, in which I both currently hold and I have held over the years. I am currently serving as the incumbent mayor, and as pastor for the New Berlin Emmanuel Church.

Answer to question 1: I strongly believe the greatest impact that one can make in their lifetime is in the community in which one lives. I am currently serving my first term, as the incumbent mayor, here in the New Berlin Borough. I am running for re-election because I would like to use this experience to further the work that we have already gained in uniting our community.

Answer to question 2: The New Berlin Borough has a wonderful history of being a quaint small town. We are also home to Sun Area Technical Institute, QE Manufacturing, and New Berlin Plastics just to name a few, as well as several small businesses. Unfortunately, the struggle is trying to maintain the allure of the quaint small town where families want to settle in and raise a family, put some roots down, and deal with the noise that comes with a busy town. This is something that we need to continue to work on. Also, I believe our infrastructure needs to be improved. Specifically, I would like to work with our own Municipal Authority to better our water treatment.

AUDITORS

Salary: \$120 per year

**6 Year Term; 4 Year Unexpired;
2 Year Unexpired Term
Vote for ONE for each term.**

No candidate filed in either party

TAX COLLECTOR

Salary: \$3.50 per bill collected
Vote for ONE.

No candidate filed in either party

JUDGE OF ELECTION

Vote for ONE.

No candidate filed in either party

INSPECTOR OF ELECTION

Vote for ONE.

No candidate filed in either party

MIFFLINBURG SCHOOL DIRECTORS

REGION 1

For candidates and their responses, see ["MIFFLINBURG SCHOOL DIRECTORS" on page 18.](#)

UNION TOWNSHIP

For the descriptions of offices and the questions asked of candidates, see the [“DESCRIPTIONS of TOWNSHIP and BOROUGH OFFICES” box on page 8.](#)

SUPERVISOR

Salary: \$1,800 per year
Vote for ONE.

Democratic

No candidate filed

Republican

THOMAS S. REITZ

Response not provided

AUDITOR

Salary: \$10 per hour
Vote for ONE.

Democratic

No candidate filed

Republican

BRUCE W. BOYNTON

Education: B.S. Pennsylvania State University

Occupation: Retired

Qualifications: Union Township Auditor for 20+ years

TAX COLLECTOR

Salary: Commission based
Vote for ONE.

Democratic

No candidate filed

Republican

WENDY J. YODER

Education: Not provided

Occupation: Tax Collector, Secretary/Treasurer

Qualifications: Union Township Tax Collector 13 yrs, Union Township Secretary/Treasurer 14 yrs, PSTCA and PSATS member, DCED Qualified Tax Collector

JUDGE OF ELECTION

Vote for ONE.

No candidate filed in either party

INSPECTOR OF ELECTION

Vote for ONE.

No candidate filed in either party

LEWISBURG SCHOOL DIRECTORS

For candidates and their responses, see [“LEWISBURG SCHOOL DIRECTORS” on page 17.](#)



FIRST-TIME VOTERS AT A PRECINCT

HAVE ID AND PROOF OF ADDRESS WITH YOU!

Voters appearing at a precinct for the first time must show identification (ID). If you registered by mail, the first time you vote you must bring a photo ID or other ID that shows your name and address. Sample valid forms of ID include: a valid PA driver's license or PennDOT ID card, any other photo ID issued by a U.S. or PA government agency, a Voter Registration ID card, a valid U.S. Passport, student ID card, etc. If you do not have one of these forms of ID, call the **Union County Elections and Voter Registration Office** at **570-524-8681** to get a list of additional, acceptable forms of ID.

UNION-INDEPENDENT

For all Union-Independent offices, see information under Union Township. Ballots in the precincts of Union and Union-Independent differ **only** by school director.

MIFFLINBURG SCHOOL DIRECTORS

REGION 1

For candidates and their responses, see [“MIFFLINBURG SCHOOL DIRECTORS” on page 18.](#)

WEST BUFFALO TOWNSHIP

For the descriptions of offices and the questions asked of candidates, see the [“DESCRIPTIONS of TOWNSHIP and BOROUGH OFFICES” box on page 8.](#)

SUPERVISORS

Salary: \$1,800 per year
Vote for ONE.

Democratic

No candidate filed

Republican

ROBERT E. VALENTINE

Education: Susquehanna University

Occupation: Retired Banker

Qualifications: Been a Supervisor/Secretary for 49 years. I feel I have invaluable experience for this position.

Answer to question 1: There is a lot more to accomplish in our Township.

Answer to question 2: Maintaining roads and bridges in our Township. We are in the process of replacing three one lane bridges with new two-lane bridges. Taking care of resident issues within the Township.

AUDITORS

Salary: \$10 per hour

6 Year Term; 4 Year Unexpired;

2 Year Unexpired Term

Vote for ONE for each term.

No candidate filed in either party

TAX COLLECTOR

Salary: \$1 per parcel
Vote for ONE.

Democratic

No candidate filed

Republican

HOLLY PASSARELLI

Education: BA Bucknell University

Occupation: Vet Tech Assistant

Qualifications: Responsible for billing and data entry for large veterinary practice. Life long resident of Union County.

JUDGE OF ELECTION

Vote for ONE.

No candidate filed in either party

INSPECTOR OF ELECTION

Vote for ONE.

No candidate filed in either party

MIFFLINBURG SCHOOL DIRECTORS

REGION 2

For candidates and their responses, see [“MIFFLINBURG SCHOOL DIRECTORS” on page 18.](#)

WHITE DEER TOWNSHIP

For the descriptions of offices and the questions asked of candidates, see the [“DESCRIPTIONS of TOWNSHIP and BOROUGH OFFICES” box on page 8.](#)

SUPERVISOR

Salary: \$3,145 per year
Vote for ONE.

Democratic

No candidate filed

Republican

ERIK M. PLATT

Education: B.S. in Mechanical Engineering, 2003 Penn State University

Occupation: Farmer / Small Business Owner

Qualifications: 10 plus years serving on the zoning hearing board

Answer to question 1: To be a good steward of the townships' resources and make the complexities of building in the township as simple for individuals as possible.

Answer to question 2: The maintenance of transportation infrastructure is the townships' primary responsibility and will always need improvement.

AUDITOR

Salary: \$35 per year, 1 meeting
Vote for ONE.

Democratic

No candidate filed

Republican

CAROL A. YOST

Education: Milton Area High School

Occupation: Bursar Services Manager at Bucknell University



CHECK YOUR VOTER REGISTRATION STATUS

You can find your voter registration status online using any of the following:

- Name & Date of Birth
- PA Driver's License Number
- PENNDOT ID Number

Go to:

pavoterservices.pa.gov/Pages/voterregistrationstatus.aspx

Qualifications: Board of Directors Corporate, Branch and Finance of the Greater Susquehanna Valley YMCA; Active member of church where I serve in various capacities, including finance team; community volunteer

TAX COLLECTOR

Salary: 5% of township tax collected
Vote for ONE.

Democratic

No candidate filed

Republican

KAREN A. STAMM

Education: Associates Degree

Occupation: Township tax collector

Qualifications: PA Act 48-2015 Qualified Tax Collector

JUDGE OF ELECTION

WHITE DEER 1

Vote for ONE.

Democratic

No candidate filed



Republican

BRETT C. STAMM



Education: Wheaton College, Illinois and Augustana College, South Dakota graduate

Occupation: Retired public school teacher

Qualifications: I

have worked with the public in many roles throughout my career in education. I am willing to serve because I know our form of government can only be maintained when

it's constituents are willing to step up and effectively serve.

WHITE DEER 2 & 3

Vote for ONE in each district.

No candidate filed in either party

WHITE DEER 4

Vote for ONE.

Democratic

No candidate filed

Republican

BARBARA J. WISE

Response not provided

INSPECTOR OF ELECTION

WHITE DEER 1, 2, & 3

Vote for ONE in each district.

No candidate filed in either party

WHITE DEER 4

Vote for ONE.

Democratic

No candidate filed

Republican

ERIK A. WISE

Response not provided

MILTON SCHOOL DIRECTORS

REGION 3

For candidates and their responses, see

["MILTON SCHOOL DIRECTOR" on page 18.](#)

SCHOOL DISTRICTS



SCHOOL DIRECTORS

Description of office: School Directors are members of a board that sets policy, determines the annual budget and levies taxes accordingly, evaluates the Superintendent, and monitors student achievement. The Board focuses on governance, while the Superintendent is responsible for the daily operation of the district. Boards meet at least monthly in addition to committee meetings and executive sessions.

Salary: None

Term: 4 years

QUESTIONS ASKED OF ALL CANDIDATES FOR SCHOOL DIRECTOR:

1. Why do you want to serve as a school director?
2. School directors have collective authority rather than individual. How will you cooperate with your fellow board members to work together on behalf of the students?

LEWISBURG SCHOOL DIRECTORS

The Lewisburg Area School District includes Lewisburg Borough, East Buffalo and Kelly Townships, and the Precinct of Union. School Directors are elected at large representing all municipalities in the district. For description of office and the questions asked of candidates, see the "School Directors" box above.

Vote for not more than FOUR.

Candidates labeled Democratic/Republican will appear on both Democratic and Republican primary ballots. Those labeled Democratic will only appear on Democratic primary ballots. Since ballot order differs by party, all candidates in this race have been listed alphabetically by last name.

Democratic / Republican

JOHN GRAHAM



Education: Penncrest High School; B.A. Theatre and B.S. Engineering, Swarthmore College; M.S. Mechanical Engineering and Ph.D.

Bioengineering, University of California

Occupation: Biomedical Engineer, Medical Researcher

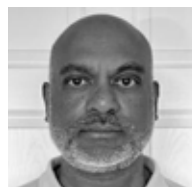
Qualifications: Current LASD School Board member (appointed 2024); Parent of 2 LASD students; CSIU Board Member, 2024-present; Board President, RiverStage Community Theatre (2017-present); Parent volunteer, LAHS Musical; East Buffalo Judge of Elections (2016-20)

Answer to question 1: I'm thankful for my own Pennsylvania public school education and grateful to the teachers, administrators and staff that make Lewisburg a great place for my kids to learn. I would enjoy doing my part to work hard and continue to serve the district. I believe my professional background in engineering--and helping medical professionals make decisions--translates well to a school board making decisions based on financial info, test scores, and other measures. I've served on the board of our local nonprofit community theatre for over 10 years, balancing a tight budget while supporting the arts in our community, and I will similarly always take the financial aspect of the job seriously while supporting students, teachers, and staff.

Answer to question 2: My experience on the board thus far has been very pleasant, with everyone having basically the same main goal—to give students a great education and experience. To do that, we have to save the district and taxpayers money everywhere we can, and we have to ensure administrators have what they need to support the teachers and staff. Those two things must be balanced, but they're not polar opposites. Although we may never have enough money to do everything, we work collectively and with the superintendent to understand where the greatest needs are and prioritize. If there's a disagreement about some particular course of action, I find we can usually take a step back and agree on the underlying common goals before reaching a compromise.

(continued on next page)

Democratic
MICHAEL R. JAMES



Education: A.B. Georgetown University; M.A. and Ph.D. Duke University
Occupation: Professor
Qualifications: Educator for over 25

years; Parent of two students in the Lewisburg Area School District; Taxpayer

Answer to question 1: As a parent, educator, and taxpayer, I am ideally prepared to serve as a school director. Both of my children have been students in the Lewisburg schools from kindergarten until high school. As a result, I have substantial experience with the strengths and challenges of all four schools: Kelly, Linntown, DHEMS, and LAHS. As an educator for over 25 years, I have experience not only as a classroom instructor but also as an administrator acquainted with the tasks of budgeting, hiring and reviewing staff, and developing, assessing, and revising curricula. As a taxpayer I am aware of the fiscal burdens faced by LASD residents, and I vow to be a responsible steward of their financial support.

Answer to question 2: My entire career has been spent in collaborative workplace settings, where decisions were made collectively. As a result, I am comfortable articulating my positions clearly and cogently, taking into consideration the opinions of those who disagree with me, and working to find sensible compromises that can garner wide acceptance. When in the position to do so, I am able to lead collective deliberations effectively, by providing a detailed agenda, sharing background information in advance, and facilitating robust but civil discussion.

Democratic / Republican
KRISTIN E. KRAUS




Education: B.A. Elementary Education, M.Ed in Special Education

Occupation: Teacher at Kinderfolk Preschool

Former Public School General Education, and Special Education Teacher

Answer to question 1: As a parent of three current LASD students and a former public school teacher myself I believe I bring a unique perspective to the School Board. I have personal experience with the challenges our teachers face in the classroom on a daily basis, and witness first hand how the decisions the District makes impact my children and their peers. These two perspectives coupled together provide me with a unique lens to look through and share insight from as we plan for the future of the Lewisburg Area School District.



WRITE-IN VOTING

DID YOU KNOW?

You have the option to **write in a candidate** when voting for any race:

- **At the polls:** Click the box next to the **write-in** space on the voting machine and use the keypad on the screen to enter the person's name.
- **Mail-in ballots:** Completely fill in the box next to **write-in** and legibly write the person's name in the provided space.

NOTE: Candidates must receive a certain number of votes, depending on the office, to win by write-in votes. If you write in a candidate, it should be someone willing to accept the position.

Answer to question 2: I have now served as a School Director for three and a half years, and have learned how import it is for the Board to stand as one collective authority once a decision is made. All nine School Board Directors have a chance to share their personal opinions and insights on any matters before us during discussion periods. Once the vote takes place and a decision is made though, the Board must move forward with whatever outcome is decided on and support the administration, teachers and staff who are left to follow through with the decision.

Website: [facebook.com/Kraus4LASDSB](https://www.facebook.com/Kraus4LASDSB)

Democratic
JAIME LYONS

Response not provided

MIFFLINBURG SCHOOL DIRECTORS

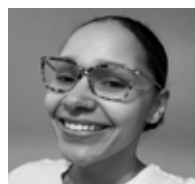
The Mifflinburg Area School District consists of Hartleton, Mifflinburg, and New Berlin Boroughs; Buffalo, Hartley, Lewis, Limestone, and West Buffalo Townships; and the Precinct of Union-Independent. School Directors are elected to represent specific municipalities. For description of office and the questions asked of candidates, see the "SCHOOL DIRECTORS" box on page 17.

MIFFLINBURG REGION 1

Region 1 of the Mifflinburg School district consists of New Berlin Borough, Buffalo and Limestone Townships, and the Precinct of Union-Independent.

Vote for ONE.

Democratic
PRECIOUS MARIA-RIOS



Education: Master of Science, Information Technology Management

Occupation: Computer Programmer

Qualifications: I

bring a strong background in community engagement and student well-being, having spent three years working with a nonprofit organization to deliver a prevention program to elementary students.

Answer to question 1: I'd like to serve because I am deeply committed to ensuring that all students receive a high-quality education that is both equitable and inclusive. Every student deserves the opportunity to succeed, regardless of their background or circumstances. I believe that by working collaboratively with educators, parents, and the community, we can create an environment where every student can thrive and reach their full potential.

Answer to question 2: I am committed to fostering an environment of open communication, mutual respect, and collaboration with my fellow board members. By actively listening to diverse perspectives and sharing ideas, we can ensure that we are making well-informed decisions that prioritize the needs of all students. Together, we will work towards common goals, balancing the best interests of students, teachers, and the community, to create a supportive and effective educational system.

Republican

No candidate filed

MIFFLINBURG REGION 2

Region 2 of the Mifflinburg School District consists of Mifflinburg Borough and West Buffalo Township.

Vote for ONE.

Democratic

No candidate filed

Republican
THOMAS L. EBERHART

Response not provided

MIFFLINBURG REGION 3

Region 3 of the Mifflinburg School District consists of Hartleton Borough and Hartley and Lewis Townships.

Vote for not more than TWO.

Democratic

No candidate filed

Republican
BRANDON STRAUB

Response not provided

Republican
MELISSA K. WAGNER

Response not provided

MILTON SCHOOL DIRECTOR

REGION 3

Region 3 of the Milton School District includes White Deer Township in Union County, and the townships of Turbot and East Chillisquaque in Northumberland County. For description of office and questions asked, see the "SCHOOL DIRECTORS" box on page 17.

Vote for ONE.

Candidates labeled Democratic/Republican will appear on both Democratic and Republican primary ballots. Those labeled Republican will only appear on Republican primary ballots. The following are listed in the order they will appear on Republican primary ballots.

Democratic / Republican
CHERYL A. RHEPPARD



Education: Milton Area School District

Occupation: Retired - Susquehanna Community Bank

Qualifications: MASD School Director for

12 years. I serve on budget and finance committees for various organizations.

Answer to question 1: I feel with my prior experience as a school director and my financial background I will be able to make sound financial decisions for the district. I have no personal agenda other than to provide a solid education for all students without placing additional financial burden on the taxpayers.

Answer to question 2: I will listen to all sides of an issue and evaluate each situation to determine what is in the best interest of the students, staff and constituents.

Republican
JOSH HUNT

Response not provided

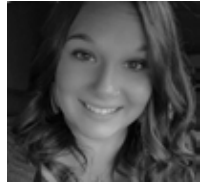
WARRIOR RUN SCHOOL DIRECTORS

REGION 1
Region 1 of the Warrior Run School District includes Gregg Township in Union County; West District of Delaware Township and Second Ward of Watsontown Borough in Northumberland County. For description of office and question asked, see the "SCHOOL DIRECTORS" box on page 17.
Vote for not more than TWO.

Democratic
No candidate filed

Republican
GAIL FOREMAN
Response not provided

Republican
TESSA MARIE HEATER



Education:
Mifflinburg High School, SUN Technical Institute, YTI Technical Institute

Occupation: Office Manager
Qualifications: Parent of 2 students, 11 years experience working with children in my career
Answer to question 1: As a mother of two and a proud military wife, I understand the importance of strong values and quality education. With years of experience working with children, I am committed to ensuring our schools focus on academic excellence and accountability.

Answer to question 2: Our kids deserve to be treated well, and our schools should prioritize the basics—reading, writing, and math—without distractions. I will advocate for transparency, hold administration accountable, and work to remove social emotional learning from our curriculum. It's time to put education back on track! I'd be honored to earn your support.

BECOME A POLL WORKER



Elections in Pennsylvania are made possible by thousands of citizens serving as poll workers across the Commonwealth.

We all depend on responsible workers to run smooth elections.

Get involved today!

POLL WORKER POSITIONS

These positions make up the local election board in each precinct:

- Judge of Election: the person in charge at the polling place
- Majority and Minority Inspectors of Election
- Clerk and Machine Inspector (also known as Machine Operator)

The Judge and Inspectors of Election, elected every four years, work together to manage the polling place, keep track of the number of voters, and make sure that the returns are delivered to the County Elections office at the end of the day. Clerks and machine inspectors, appointed by the County Board of Elections, help check-in voters, manage the lines, and make sure voters know where to go at each step in the voting process.

HOW TO BECOME A POLL WORKER

At the website vote.pa.gov, there is a Poll Worker Interest form. To indicate that you are interested in becoming a poll worker, follow these steps:

1. If you are interested in becoming a poll worker fill out the Poll Worker Interest Form here: <https://paebrprod.powerappsportals.us/EBR/DOS/Votes-PA-County/>
2. After you submit the form, the County Elections office will contact you.
3. You may reach out to the Elections office to follow up. You can find their contact information below.

COUNTY ELECTIONS OFFICE: CONTACT INFORMATION

Address: Union County Elections Office
Union County Government Center
155 North 15th Street, Lewisburg, PA 17837
Phone: 570-524-8681

Website: unioncountypa.org
(under **Departments**, choose **Elections & Voter Registration**; then click **How do I get involved?**)



UNION COUNTY POLLING PLACES

Polls are open from 7 a.m. to 8 p.m.

BUFFALO 1

Buffalo Township Municipal Bldg., 2115 Strickler Rd., Mifflinburg

BUFFALO 2

Buffalo Crossroads Community Church, 954 Johnson Mill Rd., Lewisburg

EAST BUFFALO 1

East Buffalo Township Municipal Bldg., 589 Fairground Rd., Lewisburg

EAST BUFFALO 2

Public Library for Union County, 255 Reitz Blvd., Lewisburg

EAST BUFFALO 3

Donald H. Eichhorn Middle School, 2057 Washington Ave., Lewisburg

EAST BUFFALO 4

Polling place change: Municipal Primary only.

Elaine Langone Center, Bucknell University, One Dent Dr., Lewisburg

GREGG

Warrior Run Area Social Hall, 196 White Deer Ave., Allenwood

HARTLETON

Union Church, 115 Catherine St., Hartleton

HARTLEY

Hartley Township Recreation Center, 49 Ball Park Rd., Millmont

KELLY 1

Kelly Township Bldg., 551 Zeigler Rd., Lewisburg

KELLY 2

United in Christ Lutheran Church, 1875 Churches Rd., West Milton

LEWIS

Lewis Township Municipal Bldg. (Village Green), 116 Maple St., Millmont

LEWISBURG 1

Masonic Hall, 28 N. Front St., Lewisburg

LEWISBURG 2

Union County Courthouse Lobby, 103 S. 2nd St., Lewisburg

LEWISBURG 3

Larison Hall, Bucknell University, 521 St. George St., Lewisburg

LEWISBURG 4

St. John's United Church of Christ, 1050 Buffalo Rd., Lewisburg

LIMESTONE

Limestone Township Municipal Bldg., 3840 Wildwood Rd., Mifflinburg

MIFFLINBURG EAST

Mifflinburg High School, 75 Market St., Mifflinburg

MIFFLINBURG WEST

First Evangelical Lutheran Church, 404 Market St., Mifflinburg

NEW BERLIN

New Berlin Community Center, 318 Vine St., New Berlin

UNION/

UNION-INDEPENDENT

Union Township Fire Company, 40 Municipal Ln., Winfield

WEST BUFFALO

West Buffalo Township Municipal Bldg., 577 Johnstown Rd., Mifflinburg

WHITE DEER 1

White Deer Township Municipal Bldg., 2191 Creek Rd., New Columbia

WHITE DEER 2

New Columbia Civic Center, 224 3rd St., New Columbia

WHITE DEER 3

Faith Chapel United Methodist Church, 2155 White Deer Pike, White Deer

WHITE DEER 4

Bonanza Restaurant, 300 Commerce Park Dr., New Columbia